

03274650 WHITEWATER RIVER NEAR ECONOMY, IN

LOCATION.--Lat 40°00'15", long 85°06'56", in NW¼NE¼ sec.19, T.18 N., R.13 E., Wayne County, Hydrologic Unit 05080003, (CARLOS, IN quadrangle), on right bank 15 ft downstream from bridge on Wayne County Line Road, 1.7 mi upstream from Little Creek, 2.4 mi northwest of Economy, and at mile 91.9.

DRAINAGE AREA.--10.4 mi².

PERIOD OF RECORD.--October 1970 to current year.

GAGE.--Water-stage recorder. Datum of gage is 1,066.00 ft above National Geodetic Vertical Datum of 1929.

REMARKS.--Records fair except for estimated daily discharges and those below 1.0 ft³/s, which are poor.

DISCHARGE, CUBIC FEET PER SECOND
WATER YEAR OCTOBER 2003 TO SEPTEMBER 2004
DAILY MEAN VALUES

DAY	OCT	NOV	DEC	JAN	FEB	MAR	APR	MAY	JUN	JUL	AUG	SEP
1	9.8	8.0	22	15	e4.8	16	21	6.1	39	6.2	1.8	1.1
2	8.2	8.0	16	57	e5.0	19	14	23	24	6.1	1.4	0.99
3	8.1	7.9	12	68	20	13	10	12	18	6.2	1.2	0.99
4	10	7.7	11	338	12	17	8.3	8.2	14	7.7	1.4	1.1
5	10	7.4	24	179	11	30	7.3	6.9	11	6.1	1.3	0.95
6	10	7.1	26	54	36	19	6.9	6.0	9.0	5.4	1.1	0.86
7	12	7.0	16	35	14	13	6.6	5.3	8.1	5.1	0.93	0.85
8	12	6.5	13	28	8.8	11	6.4	5.1	7.5	4.8	0.87	0.81
9	15	6.4	12	25	9.5	10	5.6	4.9	7.2	4.7	1.3	0.81
10	17	6.4	21	23	11	9.0	5.2	4.6	7.0	4.7	1.4	0.79
11	22	6.8	25	20	11	9.0	5.2	4.5	129	4.5	1.4	0.76
12	25	15	14	15	12	8.2	5.1	4.4	92	4.5	1.4	0.72
13	31	10	12	13	9.2	7.6	5.1	4.4	40	4.3	1.4	0.69
14	167	8.5	11	12	9.3	8.1	4.9	4.4	28	4.1	1.3	0.65
15	64	8.0	9.8	11	9.9	7.5	4.7	4.6	19	3.9	1.3	0.64
16	32	7.6	17	10	7.2	8.0	4.5	4.4	52	3.8	1.3	0.63
17	24	7.1	19	11	6.8	7.7	4.5	4.2	35	3.8	1.3	0.89
18	20	22	13	16	11	8.4	4.4	4.2	19	3.8	1.5	0.82
19	14	67	11	11	27	15	4.4	9.4	13	3.8	2.0	0.68
20	11	30	9.6	9.4	37	16	4.4	7.5	11	3.6	32	0.64
21	9.6	20	9.2	9.2	25	13	4.5	6.0	9.6	3.7	14	0.60
22	8.6	14	9.5	8.7	14	11	4.8	5.2	9.6	6.3	3.1	0.58
23	8.1	12	76	8.2	13	9.6	9.7	4.7	8.3	3.0	2.0	0.57
24	7.5	29	40	8.0	12	9.3	6.6	4.5	7.9	2.5	1.6	0.60
25	7.5	19	24	e7.1	10	8.6	6.4	4.4	7.6	2.3	1.5	0.57
26	12	14	17	e7.0	9.3	17	5.5	4.2	7.3	2.4	1.7	0.56
27	11	104	13	e6.8	8.8	35	5.0	80	6.9	2.5	1.4	0.57
28	10	92	12	e6.0	8.5	20	4.7	251	6.8	2.4	1.3	0.57
29	10	39	23	e5.2	8.7	15	4.5	53	6.5	2.2	1.3	0.56
30	9.1	27	41	e4.9	---	24	5.1	39	6.3	2.9	1.3	0.58
31	8.2	---	20	e4.8	---	44	---	195	---	5.6	1.2	---
TOTAL	623.7	624.4	599.1	1,026.3	381.8	459.0	195.3	781.1	659.6	132.9	88.00	22.13
MEAN	20.1	20.8	19.3	33.1	13.2	14.8	6.51	25.2	22.0	4.29	2.84	0.74
MAX	167	104	76	338	37	44	21	251	129	7.7	32	1.1
MIN	7.5	6.4	9.2	4.8	4.8	7.5	4.4	4.2	6.3	2.2	0.87	0.56
CFSM	1.93	2.00	1.86	3.18	1.27	1.42	0.63	2.42	2.11	0.41	0.27	0.07
IN.	2.23	2.23	2.14	3.67	1.37	1.64	0.70	2.79	2.36	0.48	0.31	0.08

STATISTICS OF MONTHLY MEAN DATA FOR WATER YEARS 1971 - 2004, BY WATER YEAR (WY)

MEAN	4.85	10.6	12.5	13.4	17.3	19.6	18.6	14.7	9.62	8.59	4.54	4.06
MAX	39.9	67.0	39.7	37.7	56.0	41.6	46.0	58.4	24.8	63.2	61.5	40.8
(WY)	(1987)	(1994)	(1978)	(1996)	(1985)	(1978)	(1996)	(1996)	(1998)	(2003)	(1979)	(2003)
MIN	0.14	0.10	0.19	0.33	3.31	2.58	2.96	1.47	1.03	0.57	0.40	0.15
(WY)	(2000)	(2000)	(2000)	(1977)	(1978)	(1981)	(1971)	(1988)	(1977)	(1977)	(1999)	(1999)

SUMMARY STATISTICS

FOR 2003 CALENDAR YEAR

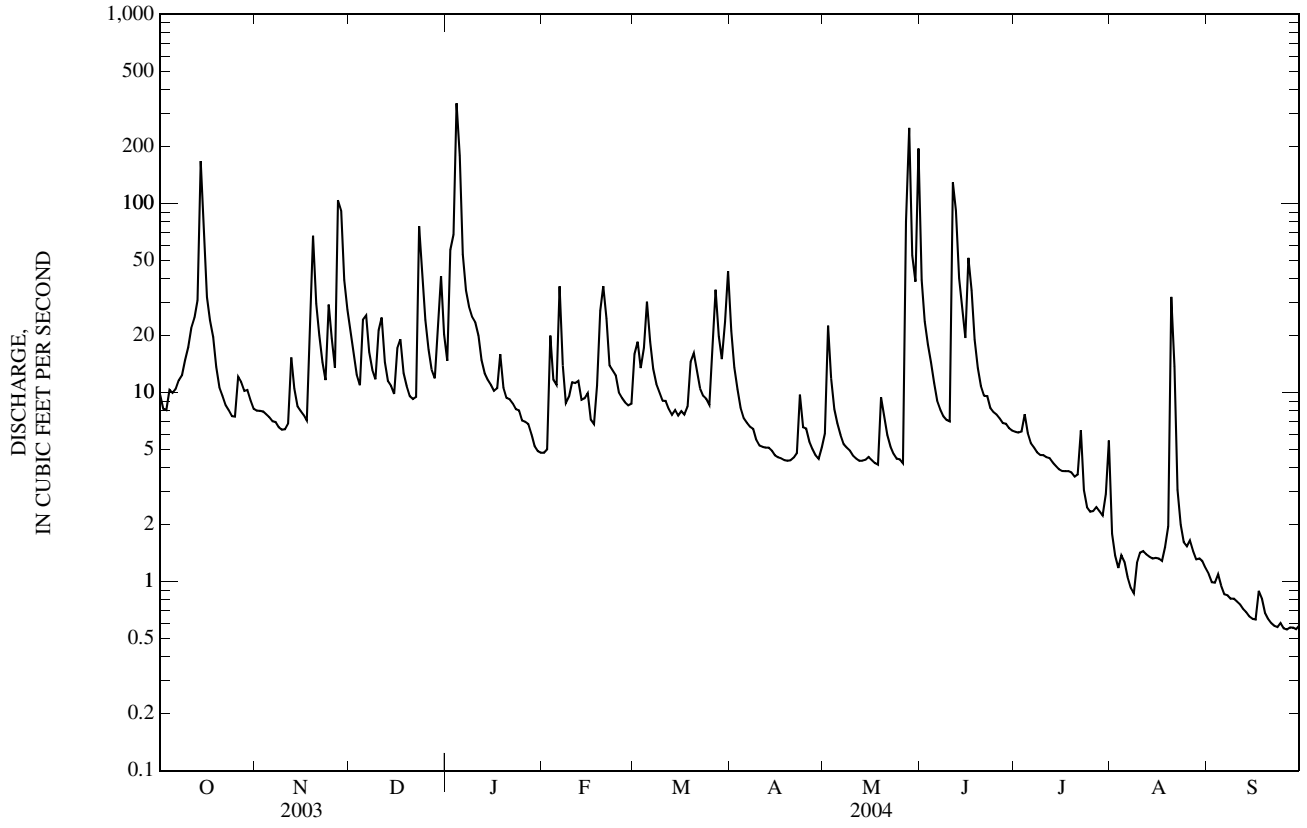
FOR 2004 WATER YEAR

WATER YEARS 1971 - 2004

ANNUAL TOTAL	7,937.3	5,593.33	
ANNUAL MEAN	21.7	15.3	11.5
HIGHEST ANNUAL MEAN			18.8
LOWEST ANNUAL MEAN			3.26
HIGHEST DAILY MEAN	487	Jul 9	338
LOWEST DAILY MEAN	1.2	Feb 18	0.56
ANNUAL SEVEN-DAY MINIMUM	1.3	Feb 15	0.57
MAXIMUM PEAK FLOW			686
MAXIMUM PEAK STAGE			7.72
ANNUAL RUNOFF (CFSM)	2.09		1.47
ANNUAL RUNOFF (INCHES)	28.39		20.01
10 PERCENT EXCEEDS	39		28
50 PERCENT EXCEEDS	9.6		8.1
90 PERCENT EXCEEDS	2.6		1.3
			647
			0.00
			0.00
			1,120
			8.91
			1.11
			15.01
			26
			4.1
			0.71

e Estimated

03274650 WHITEWATER RIVER NEAR ECONOMY, IN—Continued



03275000 WHITEWATER RIVER NEAR ALPINE, IN

(Former National stream-quality accounting network station)

LOCATION.--Lat 39°34'46", long 85°09'29", in SW $\frac{1}{4}$ NE $\frac{1}{4}$ sec.14, T.13 N., R.12 E., Fayette County, Hydrologic Unit 05080003, (ALPINE, IN quadrangle), on right bank at Nulltown, 400 ft upstream from Wilson Creek, 0.4 mi upstream from bridge on County Road 480 South, 2.0 mi northeast of Alpine, 5.1 mi upstream from Bear Creek, and at mile 54.8.

DRAINAGE AREA.--522 mi².

PERIOD OF RECORD.--October 1928 to current year. Prior to October 1936, published as West Fork Whitewater River near Alpine.

REVISED RECORDS.--WSP 1143: 1943-44(M), 1947 (M). WSP 1335: 1929-30, 1932(M), 1938, 1946-47(m), 1949-50. WSP 1505: 1942(P). WSP 1908: 1937(M), 1944, 1949(M), drainage area. WDR IN-79-1: 1975 (P).

GAGE.--Water-stage recorder and crest-stage gage. Datum of gage is 750.19 ft above National Geodetic Vertical Datum of 1929. Prior to Nov. 9, 1928, nonrecording gage at site .5 mi downstream and same datum. Oct. 1, 1982 to June 30, 1993, at same site and datum. July 1, 1993 to Oct. 22, 1998 gage at site .5 mi downstream and at same datum.

REMARKS.--Records fair except for estimated daily discharges, which are poor.

DISCHARGE, CUBIC FEET PER SECOND
WATER YEAR OCTOBER 2003 TO SEPTEMBER 2004
DAILY MEAN VALUES

DAY	OCT	NOV	DEC	JAN	FEB	MAR	APR	MAY	JUN	JUL	AUG	SEP
1	578	533	1,360	949	e360	545	777	397	2,590	435	538	181
2	520	588	1,140	1,960	e370	756	655	834	1,390	415	373	173
3	478	538	997	2,620	953	712	572	983	1,030	399	316	170
4	469	500	902	9,680	1,000	659	517	685	822	424	348	168
5	448	472	928	15,900	743	719	471	568	701	403	321	165
6	421	444	1,310	3,830	1,810	765	443	490	616	375	275	160
7	394	420	1,080	2,060	1,410	639	431	440	551	356	255	155
8	373	398	939	1,610	775	561	417	399	502	338	245	152
9	360	379	863	1,380	657	519	392	370	460	329	239	151
10	353	369	867	1,170	730	483	368	380	433	345	233	147
11	345	372	1,130	1,060	771	458	356	348	2,950	344	226	145
12	338	479	972	1,000	785	434	351	324	9,750	330	221	142
13	329	630	832	934	723	410	363	316	2,380	310	217	139
14	608	495	793	887	609	403	372	313	1,550	293	214	139
15	2,590	448	736	853	669	402	339	352	1,230	282	212	136
16	1,220	424	773	794	560	417	322	368	2,940	276	207	136
17	841	403	1,100	791	505	411	310	345	5,150	372	203	141
18	667	497	927	1,120	497	405	303	362	1,750	285	199	135
19	579	2,210	804	887	716	457	295	1,280	1,270	273	199	130
20	510	1,740	720	744	1,250	592	309	1,500	1,010	263	240	127
21	464	1,040	661	695	1,450	653	315	879	884	254	878	125
22	433	799	646	666	860	562	330	701	901	663	459	124
23	407	681	936	597	742	500	390	577	820	465	317	123
24	385	813	2,010	e560	727	470	410	565	703	336	261	121
25	373	971	1,200	e540	672	446	398	504	718	293	233	120
26	609	744	928	e540	597	424	391	485	629	290	250	118
27	819	5,630	805	e540	557	582	358	475	563	299	223	117
28	632	7,150	744	e500	524	656	329	3,130	523	286	210	117
29	611	3,140	758	e400	508	583	308	2,510	493	272	207	116
30	604	1,740	1,590	e360	---	551	341	1,100	461	269	200	118
31	528	---	1,200	e350	---	658	---	6,190	---	746	190	---
TOTAL	18,286	35,047	30,651	55,977	22,530	16,832	11,933	28,170	45,770	11,020	8,709	4,191
MEAN	590	1,168	989	1,806	777	543	398	909	1,526	355	281	140
MAX	2,590	7,150	2,010	15,900	1,810	765	777	6,190	9,750	746	878	181
MIN	329	369	646	350	360	402	295	313	433	254	190	116
CFSM	1.13	2.24	1.89	3.46	1.49	1.04	0.76	1.74	2.92	0.68	0.54	0.27
IN.	1.30	2.50	2.18	3.99	1.61	1.20	0.85	2.01	3.26	0.79	0.62	0.30

STATISTICS OF MONTHLY MEAN DATA FOR WATER YEARS 1929 - 2004, BY WATER YEAR (WY)

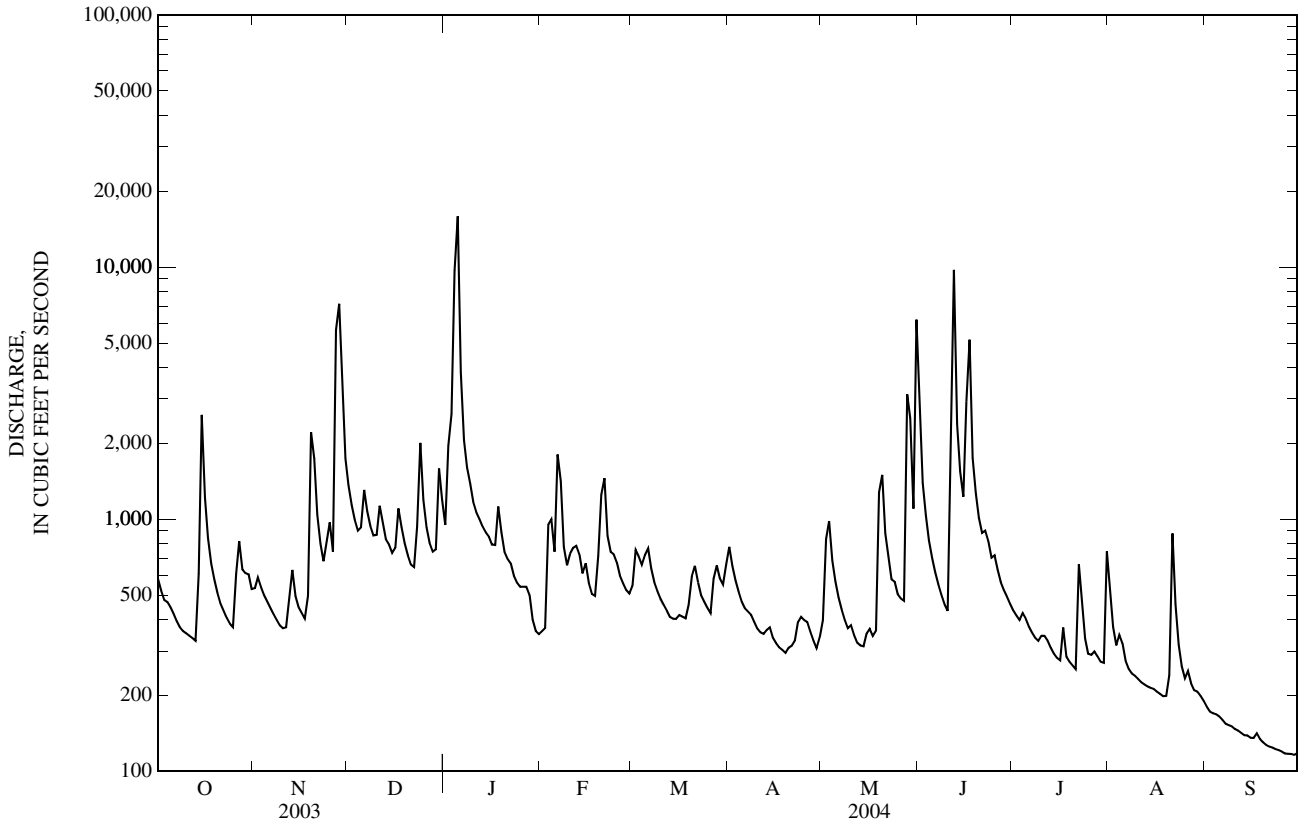
MEAN	208	360	561	823	856	993	1,001	792	565	383	245	190
MAX	1,685	1,978	2,531	4,409	2,639	2,522	2,665	3,763	2,609	1,777	2,342	1,362
(WY)	(1987)	(1994)	(1991)	(1937)	(1950)	(1963)	(2002)	(1996)	(1998)	(1979)	(1979)	(2003)
MIN	47.1	49.8	50.6	58.9	56.9	120	122	70.0	68.9	61.1	61.3	50.3
(WY)	(1935)	(1935)	(1935)	(1935)	(1935)	(1935)	(1941)	(1941)	(1934)	(1934)	(1988)	(1934)

GREAT MIAMI RIVER BASIN

03275000 WHITEWATER RIVER NEAR ALPINE, IN—Continued

SUMMARY STATISTICS	FOR 2003 CALENDAR YEAR		FOR 2004 WATER YEAR		WATER YEARS 1929 - 2004	
ANNUAL TOTAL	316,967		289,116		580	
ANNUAL MEAN	868		790		1,066	
HIGHEST ANNUAL MEAN					117	2002
LOWEST ANNUAL MEAN					117	1941
HIGHEST DAILY MEAN	14,400	Sep 2	15,900	Jan 5	26,300	Mar 5, 1963
LOWEST DAILY MEAN	204	Jul 4	116	Sep 29	30	Aug 6, 1934
ANNUAL SEVEN-DAY MINIMUM	218	Feb 15	118	Sep 24	33	Aug 2, 1934
MAXIMUM PEAK FLOW			17,400	Jan 4	37,100	Jan 14, 1937
MAXIMUM PEAK STAGE			18.57	Jan 4	19.70	Dec 31, 1990
ANNUAL RUNOFF (CFSM)	1.66		1.51		1.11	
ANNUAL RUNOFF (INCHES)	22.59		20.60		15.09	
10 PERCENT EXCEEDS	1,700		1,270		1,160	
50 PERCENT EXCEEDS	514		500		283	
90 PERCENT EXCEEDS	263		207		88	

e Estimated



03275600 EAST FORK WHITEWATER RIVER AT ABINGTON, IN

LOCATION.--Lat 39°43'57", long 84°57'35", in NE $\frac{1}{4}$ SW $\frac{1}{4}$ sec.2, T.12 N., R.2 W., Wayne County, Hydrologic Unit 05080003, (LIBERTY, IN quadrangle), 15 ft downstream of bridge on county road at Abington, 3 mi downstream from Elkhorn Creek, 8 mi southwest of Richmond, and at mile 26.7.

DRAINAGE AREA.--200 mi².

PERIOD OF RECORD.--October 1965 to current year.

REVISED RECORDS.--WSP 2108: Drainage area. WDR IN-90-1: 1966(M), 1967-75(P), 1976-77(M), 1978-79(P), 1982(P), 1987(P), 1989(P).

GAGE.--Water-stage recorder. Datum of gage is 791.00 ft above National Geodetic Vertical Datum of 1929. Prior to Aug. 2, 1991 at site 250 ft downstream at same datum.

REMARKS.--Records fair except for estimated daily discharges, which are poor.

DISCHARGE, CUBIC FEET PER SECOND
WATER YEAR OCTOBER 2003 TO SEPTEMBER 2004
DAILY MEAN VALUES

DAY	OCT	NOV	DEC	JAN	FEB	MAR	APR	MAY	JUN	JUL	AUG	SEP
1	183	244	512	353	e140	219	207	151	777	130	129	37
2	161	259	399	732	e150	317	193	520	452	122	98	33
3	151	229	342	968	570	267	175	437	327	115	83	39
4	161	202	307	5,930	e360	253	158	278	262	146	107	34
5	141	184	386	5,530	e320	290	146	219	228	125	103	31
6	131	170	468	1,180	1,130	287	137	181	207	113	77	30
7	121	158	362	684	527	231	136	158	191	102	67	30
8	110	148	315	540	281	201	134	141	176	93	61	29
9	105	137	286	457	e240	186	126	129	168	88	56	31
10	103	133	310	385	e230	170	117	118	167	92	55	27
11	100	137	343	355	e210	169	112	110	4,090	94	51	25
12	96	367	288	335	e200	155	110	102	1,880	99	51	25
13	92	328	252	312	e190	144	120	100	742	86	50	24
14	313	228	256	293	e180	145	147	97	512	73	48	23
15	682	194	232	279	e170	142	124	129	446	67	45	24
16	354	182	287	250	e160	161	111	117	3,010	63	45	24
17	259	166	483	267	e156	156	106	107	2,140	81	44	47
18	206	295	333	454	e154	162	101	114	724	71	42	25
19	181	1,250	279	308	e200	218	95	502	458	63	43	24
20	168	622	240	e240	375	299	99	492	343	59	223	23
21	155	378	218	e220	422	348	107	284	289	55	245	21
22	144	294	224	e190	267	269	109	225	309	443	111	21
23	134	246	504	e180	240	222	157	182	273	276	76	20
24	126	358	780	e170	255	202	131	164	240	128	60	20
25	122	345	433	e160	229	184	157	150	300	99	51	20
26	468	271	323	e170	204	172	169	156	214	106	94	18
27	422	4,630	276	e180	190	193	139	154	179	123	56	19
28	289	3,500	256	e170	180	184	125	2,520	165	104	47	19
29	300	1,280	326	e160	179	180	116	592	156	89	46	23
30	269	702	853	e150	---	174	128	358	141	83	47	27
31	219	---	471	e145	---	178	---	3,630	---	194	41	---
TOTAL	6,466	17,637	11,344	21,747	8,109	6,478	3,992	12,617	19,566	3,582	2,352	793
MEAN	209	588	366	702	280	209	133	407	652	116	75.9	26.4
MAX	682	4,630	853	5,930	1,130	348	207	3,630	4,090	443	245	47
MIN	92	133	218	145	140	142	95	97	141	55	41	18
CFSM	1.04	2.94	1.83	3.51	1.40	1.04	0.67	2.04	3.26	0.58	0.38	0.13
IN.	1.20	3.28	2.11	4.04	1.51	1.20	0.74	2.35	3.64	0.67	0.44	0.15

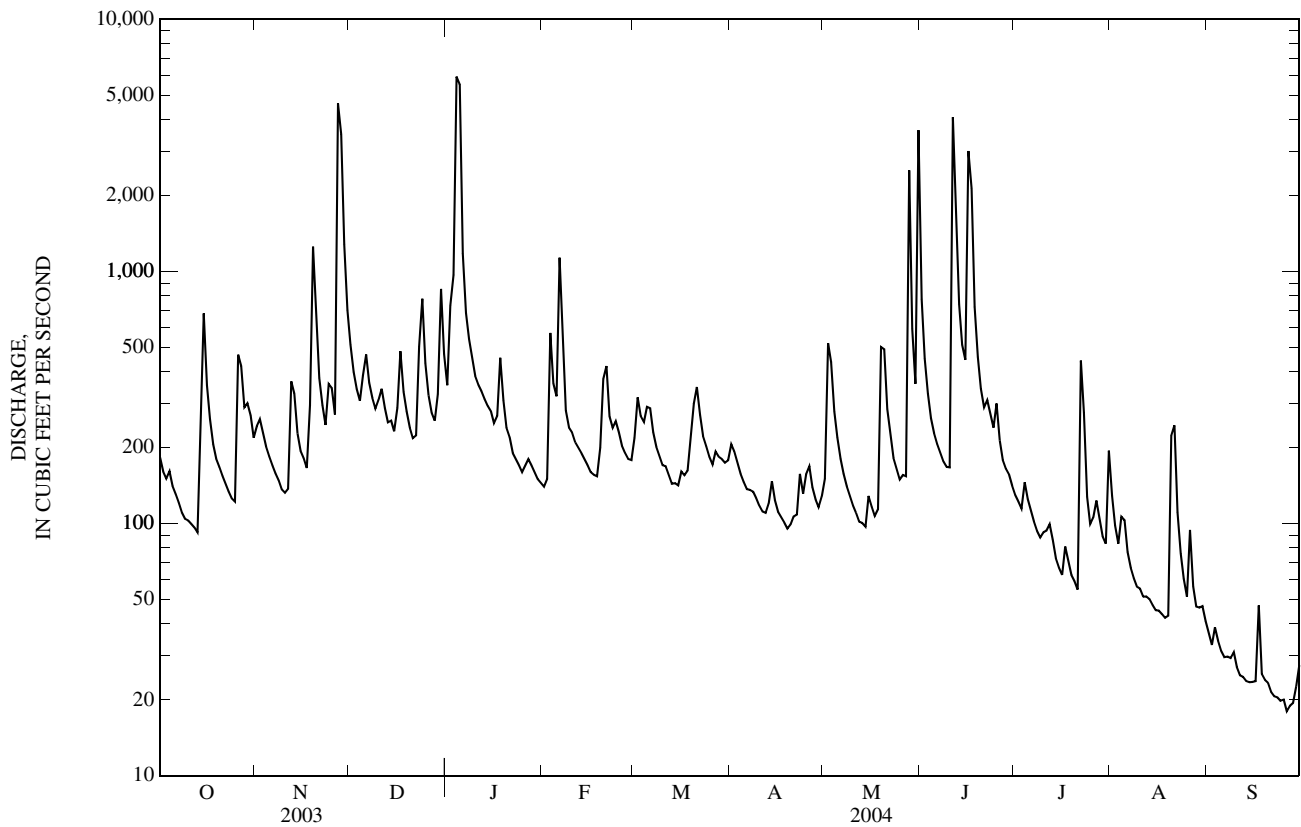
STATISTICS OF MONTHLY MEAN DATA FOR WATER YEARS 1966 - 2004, BY WATER YEAR (WY)

MEAN	89.0	174	277	279	310	367	390	350	217	173	111	67.2
MAX	615	732	929	708	901	884	1,052	1,049	789	790	773	501
(WY)	(1987)	(1994)	(1991)	(1969)	(1975)	(1978)	(2002)	(1968)	(1998)	(2003)	(1979)	(2003)
MIN	18.8	25.5	26.5	21.3	83.8	111	88.7	55.9	24.6	22.9	18.6	12.9
(WY)	(2000)	(2000)	(1977)	(1977)	(1992)	(1992)	(1976)	(1976)	(1988)	(1988)	(1988)	(1999)

03275600 EAST FORK WHITEWATER RIVER AT ABINGTON, IN—Continued

SUMMARY STATISTICS	FOR 2003 CALENDAR YEAR		FOR 2004 WATER YEAR		WATER YEARS 1966 - 2004	
ANNUAL TOTAL	146,016		114,683			
ANNUAL MEAN	400		313		233	
HIGHEST ANNUAL MEAN					388	1979
LOWEST ANNUAL MEAN					92.3	1977
HIGHEST DAILY MEAN	5,500	Sep 2	5,930	Jan 4	10,100	Jan 22, 1999
LOWEST DAILY MEAN	75	Jul 4	18	Sep 26	10	Sep 17, 1999
ANNUAL SEVEN-DAY MINIMUM	82	Jan 27	20	Sep 22	11	Sep 22, 1999
MAXIMUM PEAK FLOW			12,400	Jan 5	20,000	Jul 20, 1969
MAXIMUM PEAK STAGE			14.37	Jan 5	16.18	Jul 20, 1969
ANNUAL RUNOFF (CFSM)	2.00		1.57		1.17	
ANNUAL RUNOFF (INCHES)	27.16		21.33		15.85	
10 PERCENT EXCEEDS	757		475		456	
50 PERCENT EXCEEDS	218		171		117	
90 PERCENT EXCEEDS	98		47		33	

e Estimated



WATER-QUALITY RECORDS

INSTRUMENTATION.--Temperature recorder.

PERIOD OF RECORD.--

WATER TEMPERATURE.--September 1987 to current year.

EXTREMES FOR PERIOD OF DAILY RECORD.--

WATER TEMPERATURE: Maximum, 27.8°C, July 7, 1999; minimum, 1.1°C, Jan. 31, 1996.

EXTREMES FOR CURRENT YEAR.--

WATER TEMPERATURE: Maximum, 25.4°C, June 28 - 29, minimum, 2.0°C, Jan. 25 - 26.

TEMPERATURE, WATER, DEGREES CELSIUS
WATER YEAR OCTOBER 2003 TO SEPTEMBER 2004

DAY	OCTOBER			NOVEMBER			DECEMBER			JANUARY		
	MAX	MIN	MEAN	MAX	MIN	MEAN	MAX	MIN	MEAN	MAX	MIN	MEAN
1	21.9	21.9	21.9	15.9	15.9	15.9	11.0	11.0	11.0	5.0	5.0	5.0
2	21.9	20.9	21.0	15.9	15.9	15.9	11.0	11.0	11.0	5.0	5.0	5.0
3	20.9	19.9	20.5	15.9	15.9	15.9	11.0	10.0	10.6	7.0	5.0	5.6
4	19.9	19.9	19.9	15.9	14.9	15.6	10.0	10.0	10.0	7.0	6.0	6.6
5	19.9	18.9	19.8	15.9	14.9	15.0	10.0	10.0	10.0	6.0	5.0	6.0
6	19.9	18.9	19.1	15.9	14.9	15.3	10.0	10.0	10.0	5.0	5.0	5.0
7	18.9	18.9	18.9	15.9	14.9	15.4	10.0	9.0	9.7	5.0	5.0	5.0
8	18.9	17.9	18.6	15.9	14.9	15.5	9.0	9.0	9.0	5.0	5.0	5.0
9	17.9	17.9	17.9	14.9	14.9	14.9	9.0	8.0	8.6	5.0	5.0	5.0
10	17.9	17.9	17.9	14.9	14.9	14.9	8.0	8.0	8.0	5.0	5.0	5.0
11	17.9	17.9	17.9	14.9	14.9	14.9	8.0	8.0	8.0	5.0	5.0	5.0
12	17.9	17.9	17.9	14.9	14.9	14.9	8.0	8.0	8.0	5.0	5.0	5.0
13	17.9	17.9	17.9	14.9	13.9	13.9	8.0	8.0	8.0	5.0	5.0	5.0
14	17.9	17.9	17.9	13.9	13.9	13.9	8.0	8.0	8.0	5.0	4.0	4.7
15	17.9	17.9	17.9	13.9	13.9	13.9	8.0	8.0	8.0	5.0	4.0	4.0
16	17.9	17.9	17.9	13.9	13.9	13.9	8.0	7.0	7.1	4.0	4.0	4.0
17	17.9	17.9	17.9	13.9	12.9	13.3	7.0	7.0	7.0	4.0	4.0	4.0
18	17.9	17.9	17.9	13.0	12.9	13.0	7.0	7.0	7.0	4.0	4.0	4.0
19	17.9	17.9	17.9	13.0	13.0	13.0	7.0	7.0	7.0	4.0	4.0	4.0
20	17.9	17.9	17.9	13.0	13.0	13.0	7.0	7.0	7.0	4.0	3.0	3.5
21	17.9	17.9	17.9	13.0	12.0	12.1	7.0	6.0	6.6	4.0	3.0	3.4
22	17.9	17.9	17.9	13.0	12.0	12.2	6.0	6.0	6.0	4.0	3.0	3.5
23	17.9	17.9	17.9	13.0	12.0	12.1	6.0	6.0	6.0	4.0	3.0	3.3
24	17.9	17.9	17.9	13.0	12.0	12.1	6.0	6.0	6.0	4.0	3.0	3.0
25	17.9	17.9	17.9	12.0	12.0	12.0	6.0	6.0	6.0	3.0	2.0	2.1
26	17.9	16.9	17.6	12.0	12.0	12.0	6.0	6.0	6.0	3.0	2.0	2.1
27	16.9	16.9	16.9	12.0	12.0	12.0	6.0	6.0	6.0	3.1	2.1	2.8
28	16.9	16.9	16.9	12.0	12.0	12.0	6.0	6.0	6.0	3.1	2.1	2.5
29	16.9	16.9	16.9	12.0	11.0	11.9	6.0	5.0	5.6	3.1	2.1	2.5
30	16.9	15.9	16.7	11.0	11.0	11.0	5.0	5.0	5.0	3.1	3.1	3.1
31	15.9	15.9	15.9	---	---	---	5.0	5.0	5.0	3.1	3.1	3.1
MONTH	21.9	15.9	18.2	15.9	11.0	13.7	11.0	5.0	7.7	7.0	2.0	4.1

GREAT MIAMI RIVER BASIN

03276500 WHITEWATER RIVER AT BROOKVILLE, IN

(Former National stream-quality accounting network station)

LOCATION.--Lat 39°24'24", long 85°00'46", in NE $\frac{1}{4}$ NW $\frac{1}{4}$ sec.32, T.9 N., R.2 W., Franklin County, Hydrologic Unit 05080003, (BROOKVILLE, IN quadrangle), on right bank at downstream side of highway bridge, 0.3 mi downstream from East Fork Whitewater River, 1.1 mi south of Brookville, and at mile 29.3.

DRAINAGE AREA.--1,224 mi².

PERIOD OF RECORD.--June 1915 to September 1917, October 1917 to May 1920 (gage heights only), and July 1923 to current year. Monthly discharge only for some periods, published in WSP 1305.

REVISED RECORDS.--WSP 1335: 1915-17, 1929, 1930(M), 1933(M), 1934, 1935(m), 1936. WSP 1505: 1916(M). WSP 1908: Drainage area.

GAGE.--Water-stage recorder. Datum of gage is 595.71 ft above National Geodetic Vertical Datum of 1929. Prior to July 1923, nonrecording gage at same site at datum 1.5 ft higher. July 1923 to Sept. 27, 1928, nonrecording gage at same site and datum.

REMARKS.--Records fair. Flow partially regulated by Brookville Lake since January 1974.

EXTREMES OUTSIDE PERIOD OF RECORD.--Flood of Mar. 25, 1913, reached a stage of 39.0 ft, at present datum, from floodmarks (discharge not determined).

DISCHARGE, CUBIC FEET PER SECOND
WATER YEAR OCTOBER 2003 TO SEPTEMBER 2004
DAILY MEAN VALUES

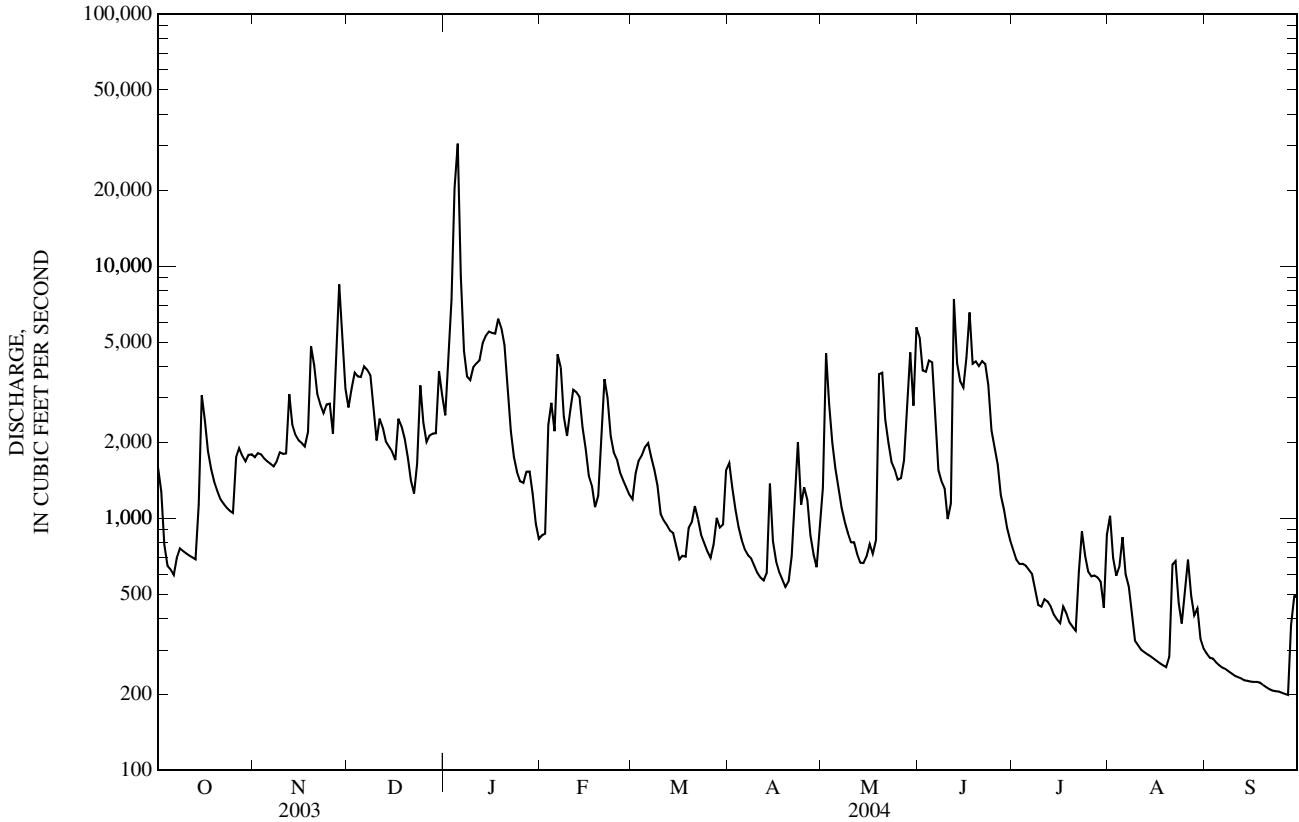
DAY	OCT	NOV	DEC	JAN	FEB	MAR	APR	MAY	JUN	JUL	AUG	SEP
1	1,580	1,750	2,750	2,560	856	1,190	1,650	1,320	5,210	747	1,020	291
2	1,270	1,810	3,270	4,120	868	1,510	1,320	4,510	3,850	684	696	280
3	785	1,790	3,780	7,380	2,350	1,690	1,080	2,850	3,810	658	591	278
4	647	1,730	3,650	20,400	2,870	1,780	922	1,990	4,220	659	641	268
5	626	1,680	3,630	30,600	2,220	1,910	820	1,580	4,160	649	841	261
6	595	1,640	4,000	9,170	4,470	1,980	750	1,300	2,410	624	599	256
7	695	1,610	3,880	4,600	3,960	1,750	714	1,100	1,550	601	536	252
8	759	1,680	3,690	3,660	2,530	1,560	693	967	1,410	523	420	247
9	741	1,820	2,740	3,540	2,120	1,350	649	875	1,310	453	327	242
10	725	1,800	2,030	3,970	2,640	1,040	607	802	993	446	313	237
11	712	1,810	2,480	4,110	3,230	981	582	803	1,150	476	301	234
12	699	3,100	2,290	4,230	3,170	939	566	719	7,400	467	294	231
13	687	2,350	2,010	4,960	3,030	894	605	667	4,120	447	288	228
14	1,130	2,140	1,920	5,280	2,290	874	1,370	664	3,500	415	283	227
15	3,070	2,040	1,840	5,490	1,880	775	810	705	3,310	397	277	225
16	2,430	1,990	1,700	5,430	1,480	686	674	791	4,330	384	272	224
17	1,840	1,930	2,480	5,400	1,340	710	613	723	6,550	447	266	224
18	1,560	2,200	2,320	6,190	1,110	704	571	820	4,100	420	261	223
19	1,400	4,810	2,070	5,670	1,230	914	534	3,730	4,190	386	256	218
20	1,280	4,030	1,740	4,860	2,200	965	562	3,770	4,020	371	281	214
21	1,190	3,120	1,410	3,140	3,560	1,120	707	2,460	4,190	358	655	210
22	1,140	2,820	1,260	2,210	3,010	989	1,160	1,990	4,090	615	676	207
23	1,100	2,610	1,650	1,750	2,120	860	2,000	1,670	3,370	887	460	206
24	1,070	2,830	3,360	1,520	1,830	798	1,130	1,560	2,220	711	382	205
25	1,050	2,850	2,390	1,400	1,710	740	1,330	1,420	1,910	615	509	203
26	1,750	2,160	2,010	1,380	1,520	697	1,180	1,440	1,630	589	685	201
27	1,900	4,630	2,130	1,530	1,420	787	857	1,690	1,240	593	492	199
28	1,760	8,460	2,170	1,530	1,330	1,000	718	3,000	1,080	583	411	376
29	1,680	5,130	2,170	1,250	1,240	919	640	4,550	918	560	439	490
30	1,790	3,270	3,820	950	---	945	892	2,800	816	442	333	490
31	1,790	---	3,090	828	---	1,550	---	5,710	---	859	304	---
TOTAL	39,451	81,590	79,730	159,108	63,584	34,607	26,706	58,976	93,057	17,066	14,109	7,647
MEAN	1,273	2,720	2,572	5,133	2,193	1,116	890	1,902	3,102	551	455	255
MAX	3,070	8,460	4,000	30,600	4,470	1,980	2,000	5,710	7,400	887	1,020	490
MIN	595	1,610	1,260	828	856	686	534	664	816	358	256	199
CFSM	1.04	2.22	2.10	4.19	1.79	0.91	0.73	1.55	2.53	0.45	0.37	0.21
IN.	1.20	2.48	2.42	4.84	1.93	1.05	0.81	1.79	2.83	0.52	0.43	0.23

STATISTICS OF MONTHLY MEAN DATA FOR WATER YEARS 1916 - 2004, BY WATER YEAR (WY)

MEAN	509	943	1,329	1,963	1,988	2,243	2,164	1,795	1,289	788	504	421
MAX	2,796	4,160	5,468	9,401	6,290	5,909	5,146	8,618	5,273	3,390	4,271	4,239
(WY)	(1927)	(1994)	(1991)	(1937)	(1950)	(1963)	(2002)	(1996)	(1998)	(1958)	(1979)	(1926)
MIN	95.5	98.1	95.1	102	122	294	275	186	161	138	102	85.7
(WY)	(1935)	(1935)	(1935)	(1977)	(1935)	(1941)	(1941)	(1941)	(1934)	(1934)	(1930)	(1999)

03276500 WHITEWATER RIVER AT BROOKVILLE, IN—Continued

SUMMARY STATISTICS	FOR 2003 CALENDAR YEAR		FOR 2004 WATER YEAR		WATER YEARS 1916 - 2004	
ANNUAL TOTAL	705,874		675,631			
ANNUAL MEAN	1,934		1,846		1,324	
HIGHEST ANNUAL MEAN					2,398	
LOWEST ANNUAL MEAN					271	
HIGHEST DAILY MEAN	8,760	Sep 2	30,600	Jan 5	55,000	Jan 21, 1959
LOWEST DAILY MEAN	327	Aug 27	199	Sep 27	60	Jul 27, 1934
ANNUAL SEVEN-DAY MINIMUM	340	Aug 23	204	Sep 21	66	Sep 25, 1941
MAXIMUM PEAK FLOW			45,700	Jan 5	81,800	Jan 21, 1959
MAXIMUM PEAK STAGE			20.67	Jan 5	27.78	Jan 21, 1959
ANNUAL RUNOFF (CFSM)	1.58		1.51		1.08	
ANNUAL RUNOFF (INCHES)	21.45		20.53		14.70	
10 PERCENT EXCEEDS	4,010		4,020		2,920	
50 PERCENT EXCEEDS	1,510		1,260		647	
90 PERCENT EXCEEDS	564		299		169	



03291780 INDIAN-KENTUCK CREEK NEAR CANAAN, IN

LOCATION.--Lat 38°52'41", long 85°15'26", in SW $\frac{1}{4}$ NW $\frac{1}{4}$ sec.13, T.5 N., R.11 E., Jefferson County, Hydrologic Unit 05140101, (REXVILLE, IN quadrangle), on downstream end of left pier of bridge on State Highway 62, 1,500 ft upstream from Wilson Fork, 2.0 mi northeast of Canaan, and at mile 16.7.

DRAINAGE AREA.--27.5 mi².

PERIOD OF RECORD.--October 1969 to current year.

GAGE.--Water-stage recorder. Elevation of gage is 590 ft above National Geodetic Vertical Datum of 1929, from topographic map.

REMARKS.--Records fair except for estimated daily discharges and those below 1 ft³/s, which are poor.

DISCHARGE, CUBIC FEET PER SECOND
WATER YEAR OCTOBER 2003 TO SEPTEMBER 2004
DAILY MEAN VALUES

DAY	OCT	NOV	DEC	JAN	FEB	MAR	APR	MAY	JUN	JUL	AUG	SEP
1	5.9	7.0	32	37	e18	23	23	299	62	12	30	2.4
2	4.4	6.4	24	222	e19	29	18	405	35	18	10	2.2
3	3.7	6.0	21	81	e20	23	16	95	23	23	4.1	2.5
4	3.8	5.7	19	1,340	e30	356	13	51	17	23	4.0	2.3
5	3.6	5.3	23	415	102	96	12	37	13	19	5.8	2.2
6	3.2	5.3	26	112	387	58	11	27	11	16	3.5	2.0
7	2.9	5.6	20	e73	98	40	11	20	9.0	15	2.8	1.8
8	2.6	4.7	18	e52	47	30	11	16	7.5	13	2.4	1.7
9	2.5	4.1	17	e42	40	26	9.5	13	7.8	12	2.1	1.5
10	2.5	3.7	121	e38	73	21	8.4	11	9.9	20	1.9	1.4
11	2.6	5.7	88	e35	66	19	8.0	10	7.3	30	1.7	1.3
12	2.8	548	43	32	52	17	9.2	8.3	158	38	1.5	1.3
13	2.8	96	32	28	41	15	133	7.6	43	28	1.4	1.1
14	22	39	29	28	e31	14	216	7.4	134	24	1.3	1.1
15	19	38	23	25	e26	13	60	16	726	18	1.2	0.99
16	9.0	34	66	22	e22	27	38	17	417	14	1.1	0.93
17	6.6	25	56	23	e20	32	28	10	115	12	1.0	0.88
18	5.5	165	36	54	e19	24	22	8.7	69	12	1.00	0.91
19	4.6	170	29	e36	21	21	19	283	56	11	0.95	0.82
20	4.2	55	e24	e30	32	19	20	112	42	10	1.2	0.71
21	3.9	35	e23	e26	47	18	26	36	35	9.0	1.8	0.65
22	3.9	26	23	e24	27	15	300	21	31	27	1.7	0.55
23	3.9	21	121	e23	27	14	241	14	26	19	1.4	0.45
24	3.9	84	103	e22	27	14	72	10	23	14	1.4	0.44
25	4.2	41	47	e22	23	13	224	8.0	20	11	1.3	0.33
26	33	29	34	e21	20	12	78	23	19	10	4.2	0.33
27	21	161	28	e21	18	12	45	404	17	9.5	4.3	0.22
28	12	322	24	e20	16	12	32	319	15	8.9	3.0	0.22
29	11	83	53	e19	15	12	25	62	14	8.3	3.4	0.18
30	9.6	47	153	e19	---	14	40	159	13	9.1	3.4	0.17
31	8.0	---	52	e18	---	18	---	313	---	241	2.9	---
TOTAL	228.6	2,078.5	1,408	2,960	1,384	1,057	1,769.1	2,823.0	2,175.5	734.8	107.75	33.58
MEAN	7.37	69.3	45.4	95.5	47.7	34.1	59.0	91.1	72.5	23.7	3.48	1.12
MAX	33	548	153	1,340	387	356	300	405	726	241	30	2.5
MIN	2.5	3.7	17	18	15	12	8.0	7.4	7.3	8.3	0.95	0.17
CFSM	0.27	2.52	1.65	3.47	1.74	1.24	2.14	3.31	2.64	0.86	0.13	0.04
IN.	0.31	2.81	1.90	4.00	1.87	1.43	2.39	3.82	2.94	0.99	0.15	0.05

STATISTICS OF MONTHLY MEAN DATA FOR WATER YEARS 1970 - 2004, BY WATER YEAR (WY)

MEAN	12.7	33.7	52.9	51.8	57.7	65.9	62.1	53.4	31.8	16.0	13.4	11.7
MAX	104	137	173	169	136	134	216	198	152	60.5	78.9	81.9
(WY)	(2002)	(1980)	(1991)	(1982)	(1990)	(1975)	(1996)	(1996)	(1996)	(2000)	(1995)	(2001)
MIN	0.00	0.00	3.95	0.60	5.24	11.7	5.68	3.82	0.44	0.12	0.00	0.00
(WY)	(1988)	(2000)	(1977)	(1977)	(1992)	(1983)	(2001)	(1992)	(1988)	(1975)	(1999)	(1987)

SUMMARY STATISTICS

FOR 2003 CALENDAR YEAR

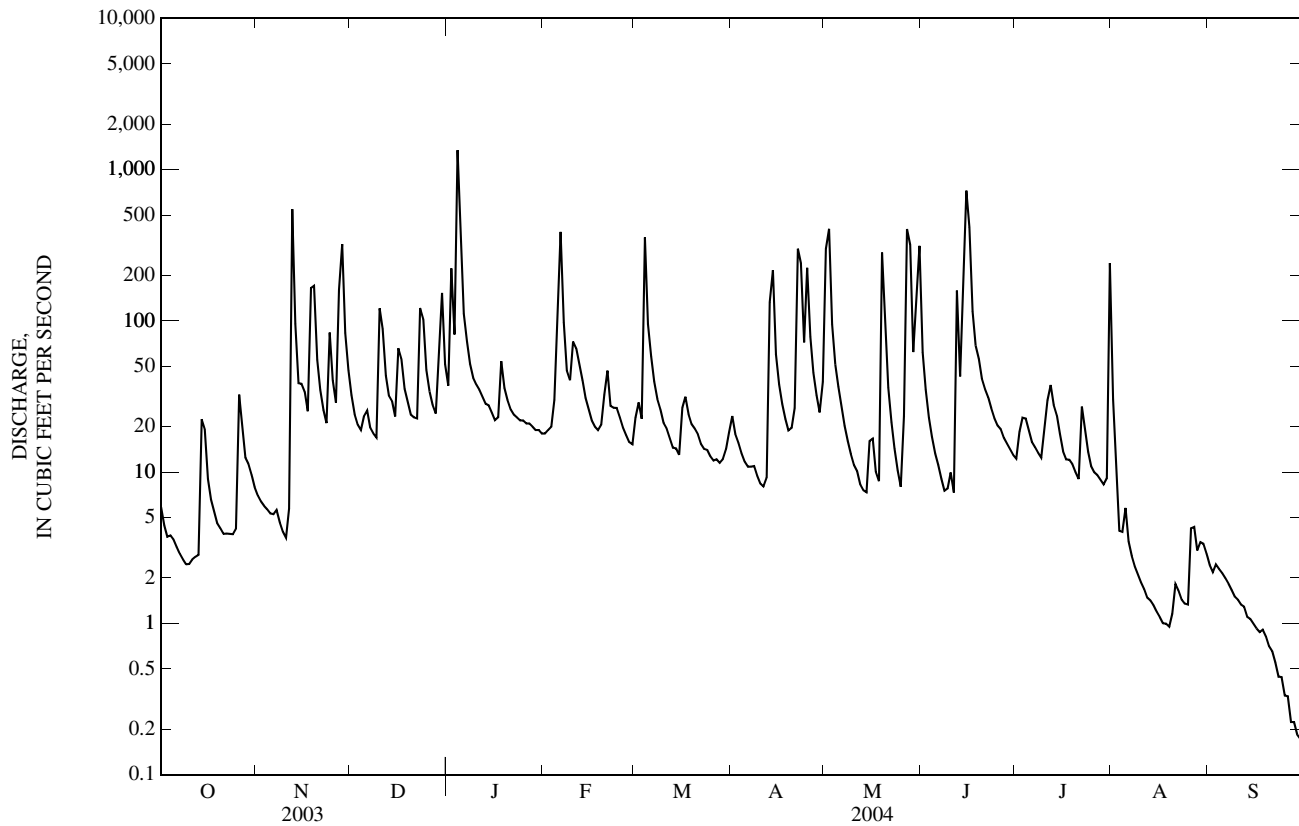
FOR 2004 WATER YEAR

WATER YEARS 1970 - 2004

ANNUAL TOTAL	14,756.00	16,759.83		
ANNUAL MEAN	40.4	45.8	38.5	
HIGHEST ANNUAL MEAN			77.2	1996
LOWEST ANNUAL MEAN			17.0	1988
HIGHEST DAILY MEAN	715	Feb 22	1,340	Jan 4
LOWEST DAILY MEAN	0.66	Aug 26	0.17	Sep 30
ANNUAL SEVEN-DAY MINIMUM	0.84	Aug 20	0.27	Sep 24
MAXIMUM PEAK FLOW			2,990	Jun 15
MAXIMUM PEAK STAGE			8.23	Jun 15
ANNUAL RUNOFF (CFSM)	1.47		1.67	
ANNUAL RUNOFF (INCHES)	19.96		22.67	
10 PERCENT EXCEEDS	84		97	80
50 PERCENT EXCEEDS	16		19	9.2
90 PERCENT EXCEEDS	2.0		1.7	0.11

e Estimated

03291780 INDIAN-KENTUCK CREEK NEAR CANAAN, IN—Continued



SILVER CREEK BASIN

03294000 SILVER CREEK NEAR SELLERSBURG, IN

LOCATION.--Lat 38°22'14", long 85°43'35", in lot 68, Clark Military Grant, Clark County, Hydrologic Unit 05140101, (JEFFERSONVILLE, IN quadrangle), on downstream side of Straws Mill bridge on Watson Road, 0.3 mi downstream from Pleasant Run, 2.4 mi southeast of Sellersburg, and 12.2 mi upstream from mouth.

DRAINAGE AREA.--189 mi².

PERIOD OF RECORD.--October 1954 to current year.

REVISED RECORDS.--WSP 1705: 1955-58. WDR IN-72-1: Drainage area.

GAGE.--Water-stage recorder and crest-stage gage. Datum of gage is 429.78 ft above National Geodetic Vertical Datum of 1929, (levels by State of Indiana, Department of Natural Resources). Prior to Oct. 6, 1976, and Feb. 15 to Sept. 20, 1984 nonrecording gage and crest-stage gage at same site and datum.

REMARKS.--Records fair except for daily discharges below 10 ft³/s, which are poor. Some regulation by Deam Lake.

DISCHARGE, CUBIC FEET PER SECOND
WATER YEAR OCTOBER 2003 TO SEPTEMBER 2004
DAILY MEAN VALUES

DAY	OCT	NOV	DEC	JAN	FEB	MAR	APR	MAY	JUN	JUL	AUG	SEP
1	55	78	275	251	e120	91	237	2,010	2,020	8.6	115	8.7
2	42	65	212	2,130	148	142	184	3,530	573	9.3	51	6.5
3	33	60	174	1,590	1,240	126	149	1,410	346	13	35	5.1
4	30	56	154	3,800	640	1,510	124	586	258	12	32	5.2
5	26	53	166	5,090	558	797	106	381	208	10	24	4.7
6	23	49	183	1,930	1,480	564	95	283	174	16	23	3.4
7	26	49	151	607	787	374	93	228	142	27	22	2.5
8	19	45	132	417	e433	277	85	189	116	18	15	2.1
9	16	38	118	338	e352	229	74	154	101	12	12	2.1
10	26	36	280	275	e285	192	66	128	192	172	10	2.1
11	28	35	446	231	e259	170	63	108	102	75	13	2.5
12	30	479	245	213	e237	154	71	91	85	77	8.4	2.3
13	20	410	191	192	e212	134	334	81	104	42	5.2	2.1
14	53	187	179	174	e196	120	1,680	90	112	60	4.4	1.8
15	133	157	172	163	e178	112	778	165	79	76	4.5	1.7
16	74	159	200	140	e164	271	389	206	64	37	5.2	2.2
17	49	129	338	129	e142	340	274	124	57	1,830	5.7	6.3
18	41	207	232	494	e135	230	218	103	56	1,210	5.3	5.9
19	35	885	237	402	e137	189	182	83	81	247	4.9	5.6
20	31	398	202	234	e133	164	159	78	83	147	7.0	4.4
21	27	248	165	206	e134	165	148	66	44	96	18	2.9
22	24	190	158	184	e135	139	169	52	34	72	17	1.7
23	24	156	202	145	e140	123	576	42	27	62	11	0.93
24	24	515	465	143	139	116	494	35	21	48	6.8	0.60
25	21	406	288	113	124	116	793	102	17	34	8.2	0.45
26	497	236	213	129	107	102	729	1,780	16	29	63	0.39
27	404	662	180	150	98	99	363	e5,350	14	30	205	0.81
28	183	1,590	161	143	90	98	253	e7,420	15	23	58	1.5
29	134	753	165	132	85	96	204	e6,020	15	23	30	1.8
30	105	405	561	119	---	137	320	1,400	10	25	24	1.9
31	87	---	331	e110	---	278	---	4,040	---	295	13	---
TOTAL	2,320	8,736	7,176	20,374	8,888	7,655	9,410	36,335	5,166	4,835.9	856.6	90.18
MEAN	74.8	291	231	657	306	247	314	1,172	172	156	27.6	3.01
MAX	497	1,590	561	5,090	1,480	1,510	1,680	7,420	2,020	1,830	205	8.7
MIN	16	35	118	110	85	91	63	35	10	8.6	4.4	0.39
CFSM	0.40	1.54	1.22	3.48	1.62	1.31	1.66	6.20	0.91	0.83	0.15	0.02
IN.	0.46	1.72	1.41	4.01	1.75	1.51	1.85	7.15	1.02	0.95	0.17	0.02

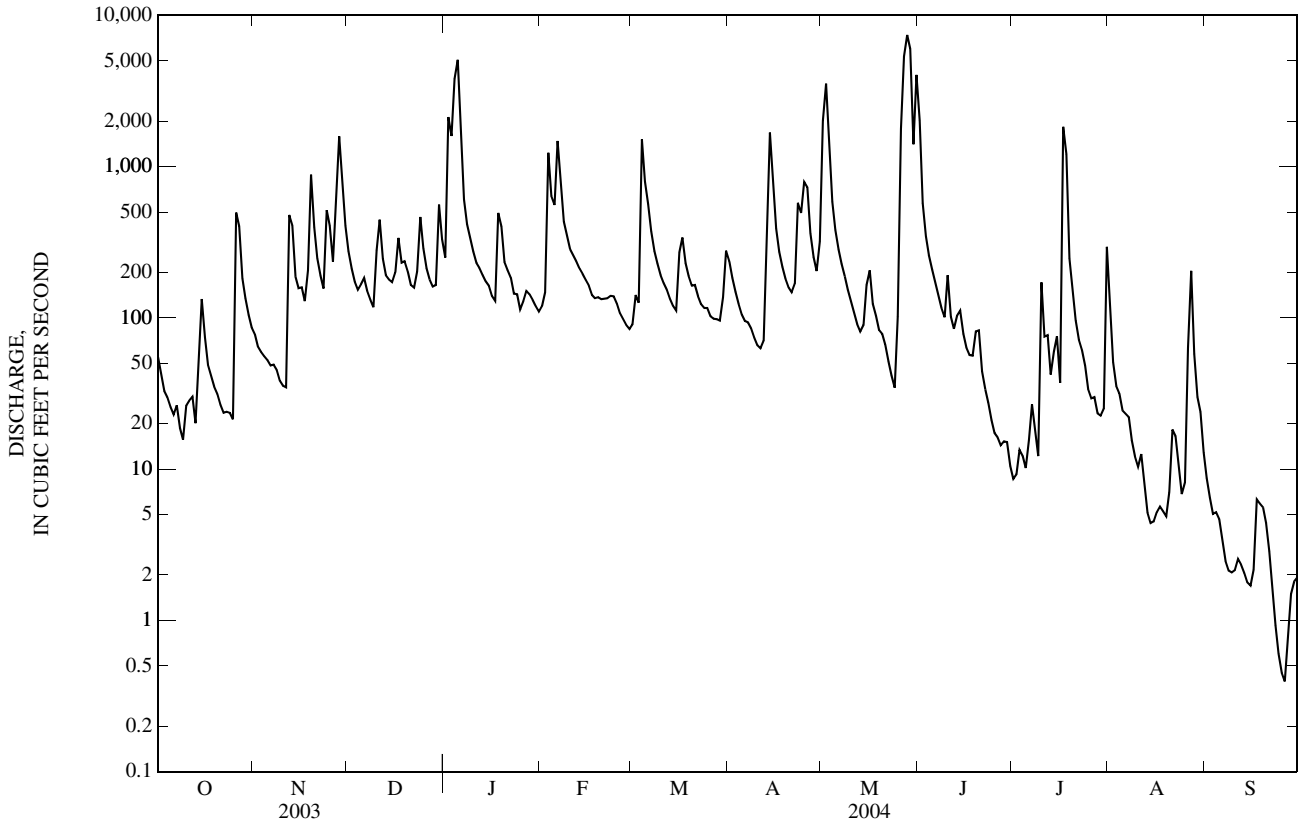
STATISTICS OF MONTHLY MEAN DATA FOR WATER YEARS 1955 - 2004, BY WATER YEAR (WY)

	MEAN	MAX	MIN	CFSM	IN.
(WY)	38.1	384	0.21	0.40	0.46
(WY)	123	805	0.61	1.54	1.72
(WY)	258	862	0.60	1.22	1.41
(WY)	314	1,150	5.43	3.48	4.01
(WY)	412	1,323	32.0	1.62	1.75
(WY)	508	2,252	112	1.31	1.51
(WY)	394	1,117	68.7	1.66	1.85
(WY)	345	1,369	25.4	6.20	7.15
(WY)	161	1,337	3.07	0.91	1.02
(WY)	70.4	316	2.75	0.83	0.95
(WY)	46.0	514	0.53	0.15	0.17
(WY)	39.4	390	0.12	0.02	0.02

03294000 SILVER CREEK NEAR SELLERSBURG, IN—Continued

SUMMARY STATISTICS	FOR 2003 CALENDAR YEAR		FOR 2004 WATER YEAR		WATER YEARS 1955 - 2004	
ANNUAL TOTAL	93,365.0		111,842.68			
ANNUAL MEAN	256		306		225	
HIGHEST ANNUAL MEAN					423	1997
LOWEST ANNUAL MEAN					92.8	1981
HIGHEST DAILY MEAN	4,000	Jan 1	e 7,420	May 28	15,100	Mar 10, 1964
LOWEST DAILY MEAN	2.4	Aug 21	0.39	Sep 26	0.00	Oct 1, 1954
ANNUAL SEVEN-DAY MINIMUM	3.2	Aug 18	0.91	Sep 22	0.00	Oct 1, 1954
MAXIMUM PEAK FLOW			8,730	May 28	19,600	Jan 22, 1959
MAXIMUM PEAK STAGE			24.46	May 28	30.89	Jan 22, 1959
INSTANTANEOUS LOW FLOW			1.4	Sep 26		
ANNUAL RUNOFF (CFSM)	1.35		1.62		1.19	
ANNUAL RUNOFF (INCHES)	18.38		22.01		16.16	
10 PERCENT EXCEEDS	519		562		477	
50 PERCENT EXCEEDS	127		124		54	
90 PERCENT EXCEEDS	14		6.7		3.1	

e Estimated



BUCK CREEK BASIN

03302220 BUCK CREEK NEAR NEW MIDDLETOWN, IN

LOCATION.--Lat 38°07'13", long 86°05'17", in SE $\frac{1}{4}$ NE $\frac{1}{4}$ sec.32, T.4 S., R.4 E., Harrison County, Hydrologic Unit 05140104, (LACONIA, IN quadrangle), on right bank at downstream side of bridge on State Highway 337 (revised), 0.6 mi downstream from South Fork Buck Creek, 3.6 mi southwest of New Middletown, and 14.6 mi upstream from mouth.

DRAINAGE AREA.--65.2 mi², of which 28.1 mi² does not contribute directly to surface runoff.

PERIOD OF RECORD.--October 1969 to current year.

REVISED RECORDS.--WDR IN-72-1: 1971(P).

GAGE.--Water-stage recorder. Datum of gage is 501.63 ft above National Geodetic Vertical Datum of 1929 (levels by State of Indiana, Department of Natural Resources).

REMARKS.--Records good except for estimated daily discharges and those below 10 ft³/s, which are poor. Flow can be affected by regulation of Spring Hills Lake during periods of low flow.

DISCHARGE, CUBIC FEET PER SECOND
WATER YEAR OCTOBER 2003 TO SEPTEMBER 2004
DAILY MEAN VALUES

DAY	OCT	NOV	DEC	JAN	FEB	MAR	APR	MAY	JUN	JUL	AUG	SEP
1	49	54	100	106	e65	32	46	312	331	e13	e15	e10
2	42	51	80	569	e220	32	45	882	316	e12	e14	e11
3	38	50	70	294	698	39	42	328	181	e12	e14	e11
4	36	49	65	359	282	895	39	168	132	e12	e14	e10
5	34	48	63	1,000	320	364	36	125	101	e13	e51	e9.0
6	34	48	60	341	651	248	35	101	81	e16	e17	e8.1
7	34	47	55	189	285	155	34	94	66	e36	e12	e7.3
8	39	46	53	147	157	119	33	69	57	e29	e11	e9.4
9	42	45	51	119	130	100	30	56	52	e28	e9.7	e9.5
10	41	45	71	95	109	80	27	46	50	e37	e10	e8.2
11	42	47	83	82	96	71	26	40	43	e32	e10	e7.1
12	47	253	72	74	85	63	33	37	90	e129	e11	e7.2
13	46	198	66	66	75	56	203	35	70	e47	e12	e6.9
14	69	113	66	61	71	53	381	36	57	e46	e12	e6.5
15	71	99	58	57	66	48	187	235	54	e30	e12	e6.4
16	58	93	75	52	58	63	123	147	56	e23	e13	e6.6
17	54	81	105	52	54	67	93	93	51	e20	e13	e6.3
18	51	134	94	193	50	59	75	75	40	e16	e14	e5.4
19	49	268	86	145	49	53	64	64	38	e13	e14	e5.2
20	48	169	76	107	49	54	57	66	31	e13	e18	e5.2
21	50	119	69	91	45	65	55	54	27	e12	e21	e4.8
22	49	95	66	80	41	54	56	47	24	e12	e17	e4.7
23	49	81	149	68	38	50	135	41	20	e14	e16	e4.2
24	48	188	220	65	38	47	122	37	17	e13	e16	e4.6
25	47	136	139	61	36	44	340	227	16	e12	e18	e5.1
26	115	108	105	63	35	42	228	812	15	e13	e58	e4.6
27	103	207	86	100	33	40	135	1,550	14	e15	e23	e5.1
28	83	383	76	79	30	38	94	2,460	14	e14	e14	e4.9
29	73	209	101	73	30	40	76	531	14	e14	e12	e4.5
30	64	142	214	70	---	47	97	354	14	e14	e11	e4.1
31	58	---	135	e68	---	49	---	816	---	e17	e11	---
TOTAL	1,663	3,606	2,809	4,926	3,896	3,167	2,947	9,938	2,072	727	513.7	202.9
MEAN	53.6	120	90.6	159	134	102	98.2	321	69.1	23.5	16.6	6.76
MAX	115	383	220	1,000	698	895	381	2,460	331	129	58	11
MIN	34	45	51	52	30	32	26	35	14	12	9.7	4.1
CFSM	1.45	3.24	2.44	4.28	3.62	2.75	2.65	8.64	1.86	0.63	0.45	0.18
IN.	1.67	3.62	2.82	4.94	3.91	3.18	2.95	9.96	2.08	0.73	0.52	0.20

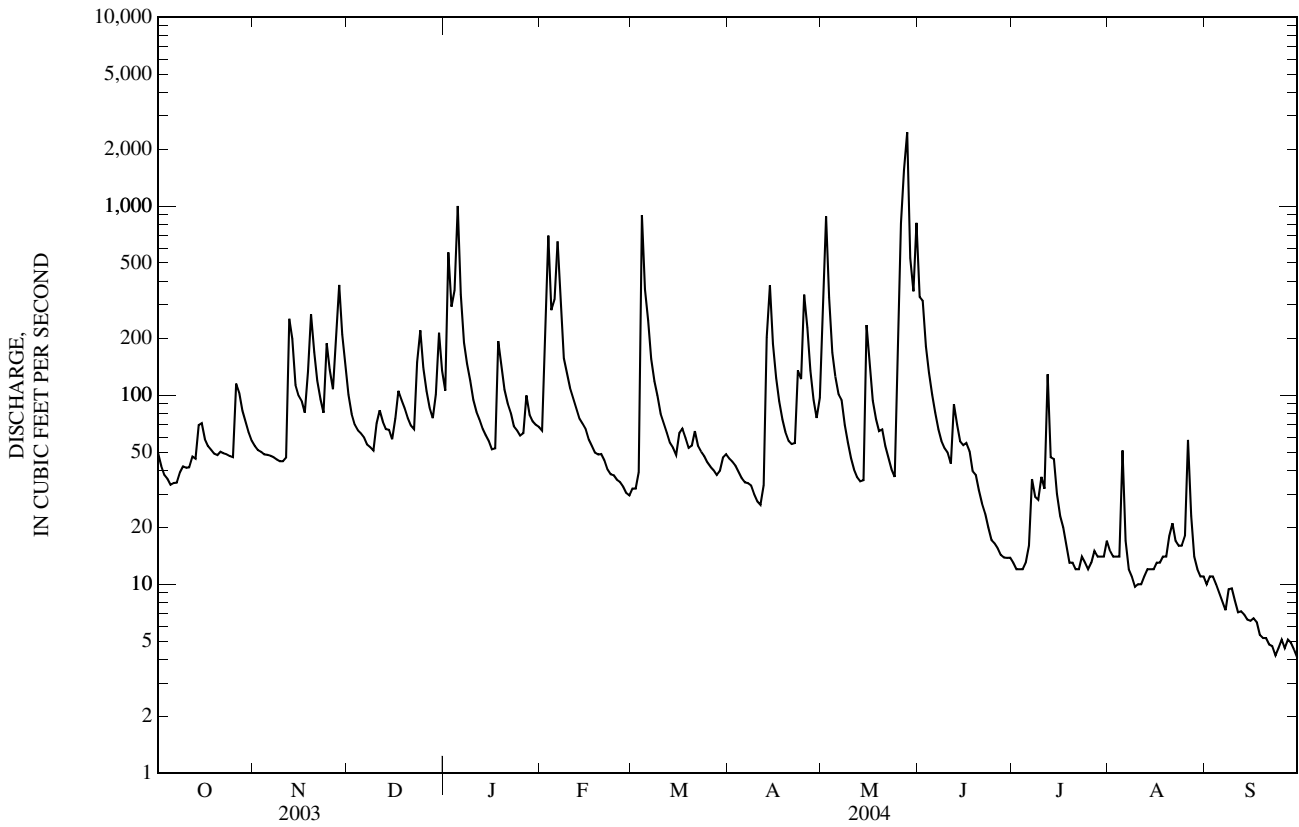
STATISTICS OF MONTHLY MEAN DATA FOR WATER YEARS 1970 - 2004, BY WATER YEAR (WY)

	18.6	54.7	99.9	110	134	155	137	113	59.8	27.5	16.1	18.8
MEAN	71.8	228	262	280	368	708	412	558	311	219	67.2	217
(WY)	(1971)	(1980)	(1991)	(1999)	(1989)	(1997)	(1970)	(1983)	(1997)	(1979)	(1992)	(1979)
MIN	0.76	3.16	6.01	2.64	24.8	40.4	21.9	16.3	1.56	4.59	1.45	0.72
(WY)	(1988)	(1988)	(1977)	(1977)	(1992)	(1983)	(2001)	(1976)	(1988)	(1975)	(1999)	(1987)

03302220 BUCK CREEK NEAR NEW MIDDLETOWN, IN—Continued

SUMMARY STATISTICS	FOR 2003 CALENDAR YEAR		FOR 2004 WATER YEAR		WATER YEARS 1970 - 2004	
ANNUAL TOTAL	31,746.1		36,467.6		78.5	
ANNUAL MEAN	87.0		99.6		32.8	
HIGHEST ANNUAL MEAN					150	1997
LOWEST ANNUAL MEAN					32.8	1981
HIGHEST DAILY MEAN	1,140	Feb 22	2,460	May 28	5,610	Mar 2, 1997
LOWEST DAILY MEAN	8.1	Jul 20	e 4.1	Sep 30	0.52	Jul 10, 1988
ANNUAL SEVEN-DAY MINIMUM	11	Jul 14	e 4.7	Sep 24	0.57	Jul 4, 1988
MAXIMUM PEAK FLOW			6,360	May 28	20,500	Mar 2, 1997
MAXIMUM PEAK STAGE			10.92	May 28	17.26	Mar 2, 1997
ANNUAL RUNOFF (CFSM)	2.34		2.69		2.11	
ANNUAL RUNOFF (INCHES)	31.83		36.57		28.73	
10 PERCENT EXCEEDS	184		208		175	
50 PERCENT EXCEEDS	51		52		28	
90 PERCENT EXCEEDS	19		11		3.4	

e Estimated



BLUE RIVER BASIN

03302680 WEST FORK BLUE RIVER AT SALEM, IN

LOCATION.--Lat 38°36'19", long 86°05'40", in SW $\frac{1}{4}$ SE $\frac{1}{4}$ sec.17, T.2 N., R.4 E., Washington County, Hydrologic Unit 05140104, (SALEM, IN quadrangle), on left bank at downstream side of bridge on East Market Street, 0.35 mi east of County Court House in Salem, 6.0 mi upstream from Hoggatt Branch, and 6.9 mi upstream from mouth.

DRAINAGE AREA.--19.0 mi².

PERIOD OF RECORD.--July 1970 to current year. Prior to December 10, 1970, nonrecording gage at site 0.55 mi downstream at datum 5.04 ft lower.

REVISED RECORDS.--WDR IN-96-1: 1983(P), 1988(P), 1990(P), 1995(P).

GAGE.--Water-stage recorder. Datum of gage is 713.00 ft above National Geodetic Vertical Datum of 1929.

REMARKS.--Records fair except for estimated daily discharges and those below 1.00 ft³/s, which are poor.

DISCHARGE, CUBIC FEET PER SECOND
WATER YEAR OCTOBER 2003 TO SEPTEMBER 2004
DAILY MEAN VALUES

DAY	OCT	NOV	DEC	JAN	FEB	MAR	APR	MAY	JUN	JUL	AUG	SEP
1	1.0	e2.4	27	22	11	13	9.9	200	79	3.4	6.3	2.4
2	1.0	e2.1	22	195	23	13	9.0	304	45	3.5	5.1	2.0
3	0.95	e2.0	19	81	106	16	8.6	95	30	4.7	4.6	1.8
4	1.0	e1.9	17	538	45	135	8.0	54	24	5.8	4.2	1.6
5	1.0	e1.8	19	246	70	66	7.5	40	20	8.1	4.4	1.5
6	1.0	e2.3	17	88	112	50	7.3	31	16	8.3	4.0	1.2
7	1.0	e2.0	16	54	50	38	7.3	24	13	5.7	3.5	1.1
8	1.0	e2.0	15	42	36	32	7.2	18	11	4.7	3.4	1.0
9	0.94	e1.8	14	35	35	27	6.6	15	9.9	35	3.2	0.97
10	0.98	e1.7	23	28	37	21	6.1	13	9.1	19	3.0	0.93
11	1.0	4.0	26	24	34	e18	5.9	11	8.3	12	3.0	0.87
12	1.0	23	22	22	30	e16	6.0	9.5	59	8.5	3.0	0.72
13	1.0	9.1	20	18	26	e15	14	11	25	7.2	2.8	0.71
14	2.1	5.5	19	16	23	e13	49	10	15	11	2.8	0.67
15	3.6	5.3	16	15	20	e14	44	20	12	8.3	2.5	0.60
16	2.6	5.0	24	13	16	16	31	19	10	6.6	2.5	0.62
17	e1.9	4.1	28	14	15	14	22	16	8.9	281	2.5	0.61
18	e1.7	36	25	33	13	13	17	13	8.6	48	2.3	0.60
19	e1.6	91	23	30	13	11	14	11	11	27	2.4	0.60
20	e1.3	42	19	24	15	11	14	10	7.9	19	3.7	0.56
21	e1.1	28	18	21	16	11	13	8.8	6.7	14	4.1	0.55
22	e0.99	22	18	19	14	9.7	21	7.7	6.5	14	3.2	0.52
23	e0.98	19	21	20	14	9.3	29	7.1	5.7	13	2.7	0.42
24	e1.0	43	24	15	14	9.1	21	6.5	5.1	9.4	2.9	0.40
25	3.3	31	22	18	13	8.6	36	34	4.6	8.2	4.2	0.38
26	16	25	19	18	12	8.2	33	116	4.5	8.2	14	0.35
27	6.6	81	17	14	12	8.2	26	2,170	4.1	7.6	7.1	0.35
28	4.2	129	16	13	11	7.7	20	526	3.7	6.4	20	0.32
29	3.5	61	19	11	11	8.7	16	99	3.6	5.5	13	0.30
30	e3.0	38	28	12	---	9.2	26	127	3.4	5.4	4.6	0.28
31	e2.7	---	24	11	---	9.5	---	209	---	11	3.1	---
TOTAL	71.04	722.0	637	1,710	847	651.2	535.4	4,235.6	470.6	629.5	148.1	24.93
MEAN	2.29	24.1	20.5	55.2	29.2	21.0	17.8	137	15.7	20.3	4.78	0.83
MAX	16	129	28	538	112	135	49	2,170	79	281	20	2.4
MIN	0.94	1.7	14	11	11	7.7	5.9	6.5	3.4	3.4	2.3	0.28
CFSM	0.12	1.27	1.08	2.90	1.54	1.11	0.94	7.19	0.83	1.07	0.25	0.04
IN.	0.14	1.41	1.25	3.35	1.66	1.27	1.05	8.29	0.92	1.23	0.29	0.05

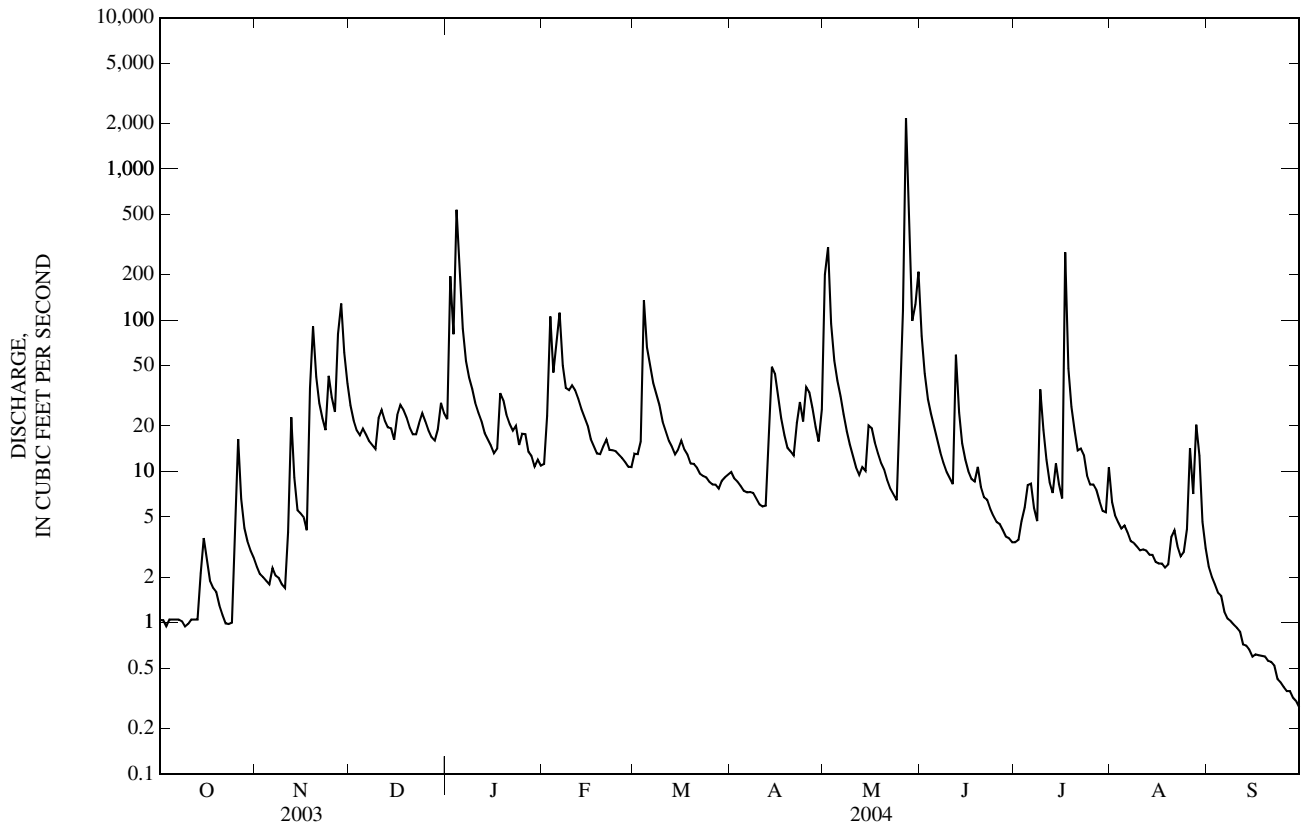
STATISTICS OF MONTHLY MEAN DATA FOR WATER YEARS 1970 - 2004, BY WATER YEAR (WY)

MEAN	6.84	22.0	33.8	33.6	41.5	43.5	43.3	37.1	15.0	12.2	6.82	6.06
MAX	45.7	89.9	108	103	106	104	164	140	80.3	65.7	30.5	40.0
(WY)	(1984)	(1986)	(2002)	(1982)	(1989)	(1989)	(1996)	(1983)	(1997)	(1988)	(1985)	(1982)
MIN	0.14	0.29	2.33	0.97	5.41	9.65	2.83	1.91	0.09	0.29	0.13	0.02
(WY)	(1988)	(2000)	(1977)	(1977)	(1992)	(1976)	(2001)	(1988)	(1988)	(1991)	(1987)	(1999)

03302680 WEST FORK BLUE RIVER AT SALEM, IN—Continued

SUMMARY STATISTICS	FOR 2003 CALENDAR YEAR		FOR 2004 WATER YEAR		WATER YEARS 1970 - 2004	
ANNUAL TOTAL	8,377.39		10,682.37		25.1	
ANNUAL MEAN	23.0		29.2		43.4	
HIGHEST ANNUAL MEAN					10.7	
LOWEST ANNUAL MEAN					1981	
HIGHEST DAILY MEAN	580	Feb 22	2,170	May 27	2,170	May 27, 2004
LOWEST DAILY MEAN	0.44	Sep 19	0.28	Sep 30	0.00	Sep 3, 1999
ANNUAL SEVEN-DAY MINIMUM	0.52	Sep 15	0.34	Sep 24	0.00	Sep 14, 1999
MAXIMUM PEAK FLOW			8,490	May 27	8,490	May 27, 2004
MAXIMUM PEAK STAGE			17.12	May 27	17.12	May 27, 2004
INSTANTANEOUS LOW FLOW			0.01	Sep 30	0.01	Sep 30, 2004
ANNUAL RUNOFF (CFSM)	1.21		1.54		1.32	
ANNUAL RUNOFF (INCHES)	16.40		20.91		17.96	
10 PERCENT EXCEEDS	58		42		55	
50 PERCENT EXCEEDS	5.8		11		7.3	
90 PERCENT EXCEEDS	0.96		1.0		0.44	

e Estimated



BLUE RIVER BASIN

03302800 BLUE RIVER AT FREDERICKSBURG, IN

LOCATION.--Lat 38°26'02", long 86°11'30", in NE $\frac{1}{4}$ NW $\frac{1}{4}$ sec.16, T.1 S., R.3 E., Washington County, Hydrologic Unit 05140104, (FREDERICKSBURG, IN quadrangle), on downstream side of bridge on U.S. Highway 150 at Fredericksburg, 0.5 mi downstream from South Fork Blue River, and at mile 57.1.

DRAINAGE AREA.--283 mi², of which 76.9 mi² does not contribute directly to surface runoff.

PERIOD OF RECORD.--June 1968 to current year.

GAGE.--Water-stage recorder. Datum of gage is 590.00 ft above National Geodetic Vertical Datum of 1929.

REMARKS.--Records fair except for estimated daily discharges, which are poor.

EXTREMES OUTSIDE PERIOD OF RECORD.--Flood of Jan. 21, 1959, reached a stage of 29.20 ft, from floodmark, on left upstream wingwall.

DISCHARGE, CUBIC FEET PER SECOND
WATER YEAR OCTOBER 2003 TO SEPTEMBER 2004
DAILY MEAN VALUES

DAY	OCT	NOV	DEC	JAN	FEB	MAR	APR	MAY	JUN	JUL	AUG	SEP
1	27	69	533	382	e150	159	256	3,910	1,690	53	91	55
2	23	61	372	3,150	e196	211	247	6,430	1,030	55	62	42
3	20	53	290	1,820	1,950	193	222	2,160	768	56	50	40
4	e19	48	247	4,550	1,030	1,980	197	1,170	619	63	46	38
5	e18	46	240	6,430	833	1,350	171	852	513	79	50	28
6	e18	47	257	1,770	2,240	1,020	154	665	434	87	40	23
7	e17	40	212	1,050	1,240	766	147	526	368	97	34	e20
8	e17	39	193	808	779	618	143	416	316	76	30	e19
9	e17	44	179	674	631	506	128	347	274	119	29	e18
10	e16	42	221	547	609	402	113	289	246	742	29	e17
11	16	41	489	449	629	343	105	248	222	321	28	e16
12	16	171	368	399	548	300	101	214	272	256	27	e16
13	14	455	293	346	472	253	134	187	435	154	27	e15
14	19	228	274	304	415	229	923	187	250	133	27	e15
15	74	169	237	279	374	210	1,060	236	208	150	26	e15
16	60	154	252	242	303	273	641	361	183	106	25	e14
17	41	133	567	225	274	379	455	257	156	1,650	25	e14
18	30	150	447	489	246	309	343	222	197	807	25	e13
19	28	1,130	411	619	236	266	279	208	193	382	25	e13
20	25	784	326	428	251	236	241	426	189	231	25	e13
21	21	489	265	370	275	237	231	217	136	162	27	e12
22	17	336	250	320	241	204	235	168	126	128	28	e12
23	16	256	260	251	221	186	746	139	116	211	24	e12
24	17	448	491	261	216	177	718	116	101	138	24	e11
25	18	601	399	220	205	166	1,340	108	93	102	37	e11
26	433	402	309	208	183	156	1,140	1,190	85	87	425	e11
27	505	757	256	249	172	153	699	7,140	78	79	516	e11
28	221	1,930	230	212	159	148	522	17,000	66	74	133	e10
29	146	1,120	218	200	152	144	395	3,650	61	66	708	e10
30	114	724	548	e170	---	176	421	1,570	57	62	197	e9.6
31	84	---	487	e155	---	239	---	4,780	---	76	93	---
TOTAL	2,107	10,967	10,121	27,577	15,230	11,989	12,507	55,389	9,482	6,802	2,933	553.6
MEAN	68.0	366	326	890	525	387	417	1,787	316	219	94.6	18.5
MAX	505	1,930	567	6,430	2,240	1,980	1,340	17,000	1,690	1,650	708	55
MIN	14	39	179	155	150	144	101	108	57	53	24	9.6
CFSM	0.24	1.29	1.15	3.14	1.86	1.37	1.47	6.31	1.12	0.78	0.33	0.07
IN.	0.28	1.44	1.33	3.62	2.00	1.58	1.64	7.28	1.25	0.89	0.39	0.07

STATISTICS OF MONTHLY MEAN DATA FOR WATER YEARS 1969 - 2004, BY WATER YEAR (WY)

MEAN	70.0	243	420	477	553	610	588	500	253	138	86.6	67.3
MAX	463	1,135	1,303	1,341	1,236	1,372	1,957	1,808	1,188	588	463	299
(WY)	(2002)	(1980)	(2002)	(1982)	(1990)	(1997)	(1996)	(1983)	(1997)	(1973)	(1977)	(1996)
MIN	3.45	6.74	29.4	11.6	56.1	142	83.9	35.2	8.36	13.1	9.55	4.25
(WY)	(1998)	(2000)	(1977)	(1977)	(1992)	(1969)	(2001)	(1988)	(1988)	(1991)	(1999)	(1999)

SUMMARY STATISTICS

FOR 2003 CALENDAR YEAR

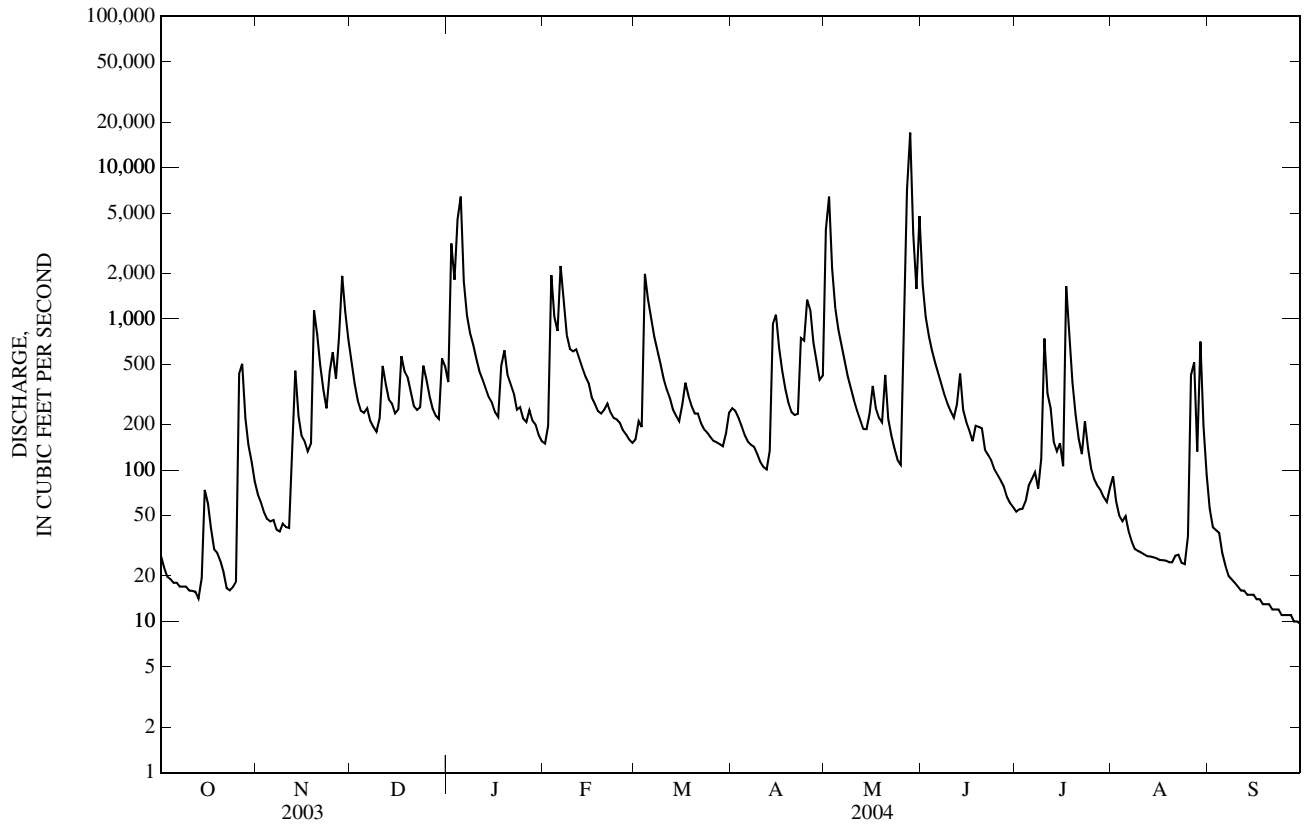
FOR 2004 WATER YEAR

WATER YEARS 1969 - 2004

ANNUAL TOTAL	130,354.7	165,657.6	
ANNUAL MEAN	357	453	333
HIGHEST ANNUAL MEAN			551
LOWEST ANNUAL MEAN			129
HIGHEST DAILY MEAN	4,940	Feb 23	17,000
LOWEST DAILY MEAN	8.9	Sep 21	e 9.6
ANNUAL SEVEN-DAY MINIMUM	11	Aug 24	e 11
MAXIMUM PEAK FLOW			23,900
MAXIMUM PEAK STAGE			25.43
ANNUAL RUNOFF (CFSM)	1.26		1.60
ANNUAL RUNOFF (INCHES)	17.13		21.78
10 PERCENT EXCEEDS	786		807
50 PERCENT EXCEEDS	168		210
90 PERCENT EXCEEDS	17		19

e Estimated

03302800 BLUE RIVER AT FREDERICKSBURG, IN—Continued



03303000 BLUE RIVER NEAR WHITE CLOUD, IN

LOCATION.--Lat 38°14'15", long 86°13'42", in NW¹/₄SE¹/₄ sec.19, T.3 S., R.3 E., Harrison County, Hydrologic Unit 05140104, (CORYDON WEST, IN quadrangle), on left bank 400 ft downstream from Spring Creek, 600 ft upstream from bridge on Interstate 64, 0.2 mi upstream from bridge on State Highway 62, 0.8 mi north of White Cloud, and at mile 14.7.

DRAINAGE AREA.--476 mi², of which 192 mi² does not contribute directly to surface runoff. Also, part of flow from Indian Creek, downstream from Corydon, IN, enters Blue River via solution channel in Karst area through Harrison Spring.

PERIOD OF RECORD.--April 1931 to current year. Monthly figures only for some periods, published in WSP 1305.

REVISED RECORDS.--WSP 1335: 1921-32, 1933(M), 1935-38(M), 1944. WSP 1385: Drainage area. WSP 1555: 1953. WDR IN-75-1: 1973.

GAGE.--Water-stage recorder. Datum of gage is 434.26 ft above National Geodetic Vertical Datum of 1929, (levels by State of Indiana, Department of Natural Resources). Prior to Nov. 16, 1938, nonrecording gage at same site and datum.

REMARKS.--Records good except for estimated daily discharges, which are poor.

DISCHARGE, CUBIC FEET PER SECOND
WATER YEAR OCTOBER 2003 TO SEPTEMBER 2004
DAILY MEAN VALUES

DAY	OCT	NOV	DEC	JAN	FEB	MAR	APR	MAY	JUN	JUL	AUG	SEP
1	145	206	915	752	e370	362	624	6,200	4,570	179	e237	e212
2	116	176	709	3,220	e500	402	604	12,500	2,330	170	e193	e177
3	98	154	590	5,110	2,450	440	563	6,020	1,580	165	e171	e163
4	87	142	525	6,040	2,500	2,420	520	2,640	1,220	168	e161	e159
5	77	129	485	12,400	1,510	3,100	476	1,730	1,010	170	e154	e146
6	70	123	469	5,030	3,130	1,990	441	1,300	881	198	e162	e134
7	64	118	459	2,240	2,730	1,510	422	1,030	777	252	e148	e125
8	60	112	416	1,540	1,580	1,170	410	856	692	230	e139	e118
9	58	102	392	1,230	1,180	964	392	735	645	196	e134	e115
10	55	98	413	1,010	1,030	821	366	647	799	338	e130	e112
11	51	103	535	861	1,020	712	347	575	605	727	e128	e106
12	45	465	657	769	961	645	342	520	849	664	e125	e99
13	41	761	557	698	855	578	494	483	1,140	515	e124	e95
14	59	586	516	635	776	528	1,460	459	784	447	e122	e90
15	87	425	488	587	717	494	1,800	535	612	380	e121	e87
16	102	364	481	541	651	611	1,270	634	540	356	e120	e84
17	189	330	638	507	570	722	930	613	500	310	e118	e81
18	133	376	772	766	538	692	750	528	471	2,010	e117	e78
19	105	1,210	690	1,100	507	607	642	485	536	708	e116	e75
20	90	1,530	642	882	504	554	570	563	475	477	e114	e72
21	81	881	564	728	512	537	531	551	449	e325	e110	e70
22	77	640	516	666	505	515	524	439	392	e281	e107	e68
23	69	516	522	602	464	475	1,240	388	358	e356	e113	e66
24	63	649	624	531	445	454	1,450	355	326	e301	e120	e64
25	58	927	731	527	432	435	1,820	813	297	e254	e100	e62
26	313	751	636	487	415	416	2,610	3,320	270	e214	e100	e59
27	781	927	561	531	391	401	1,440	7,310	247	e200	e420	e57
28	563	2,550	512	545	373	394	1,050	19,100	229	e192	e505	e54
29	367	2,240	492	483	357	391	846	16,500	209	e183	e320	e52
30	282	1,260	687	e450	---	421	797	3,320	192	e176	e702	e49
31	242	---	896	e390	---	601	---	7,020	---	e172	e336	---
TOTAL	4,628	18,851	18,090	51,858	27,973	24,362	25,731	98,169	23,985	11,314	5,767	2,929
MEAN	149	628	584	1,673	965	786	858	3,167	800	365	186	97.6
MAX	781	2,550	915	12,400	3,130	3,100	2,610	19,100	4,570	2,010	702	212
MIN	41	98	392	390	357	362	342	355	192	165	100	49
CFSM	0.31	1.32	1.23	3.51	2.03	1.65	1.80	6.65	1.68	0.77	0.39	0.21
IN.	0.36	1.47	1.41	4.05	2.19	1.90	2.01	7.67	1.87	0.88	0.45	0.23

STATISTICS OF MONTHLY MEAN DATA FOR WATER YEARS 1932 - 2004, BY WATER YEAR (WY)

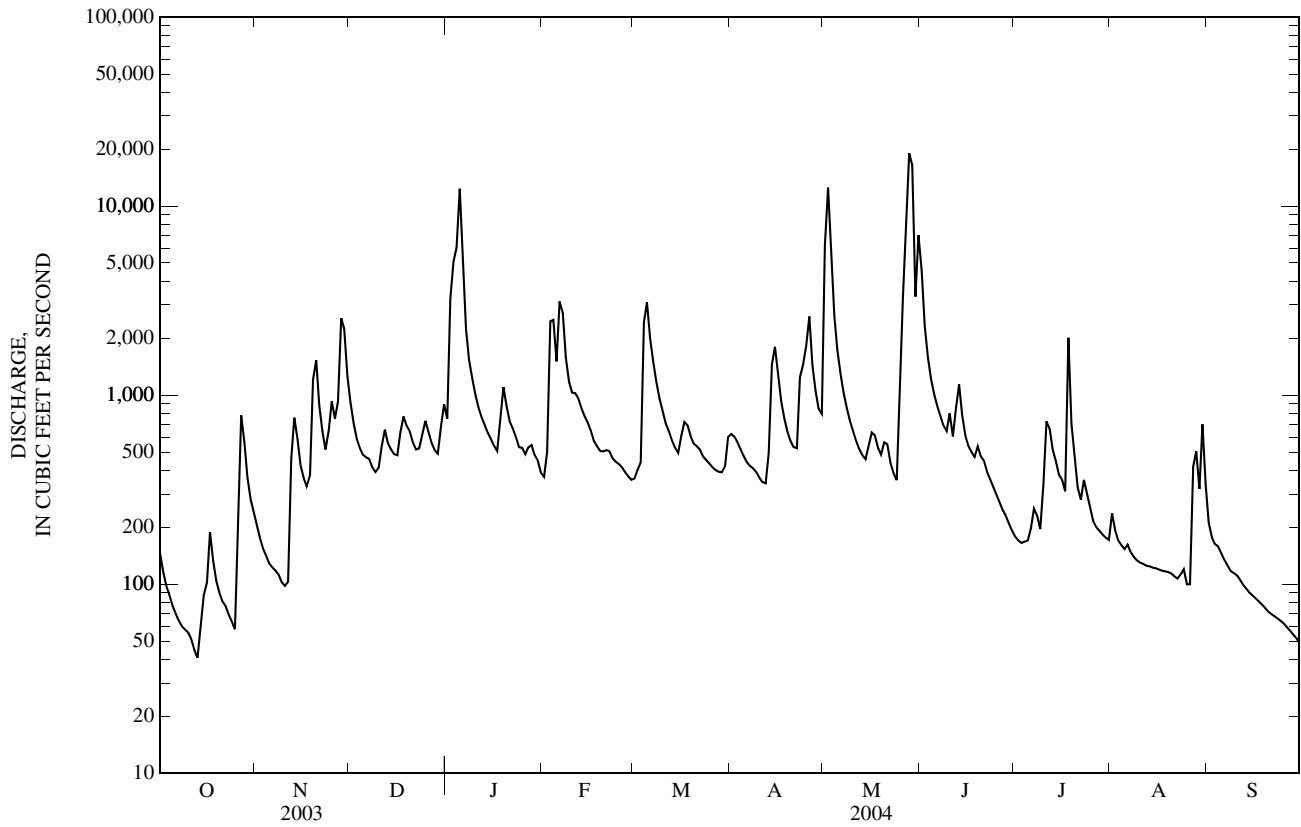
MEAN	138	378	685	1,060	1,140	1,372	1,161	924	509	282	175	140
MAX	934	2,057	2,502	6,290	3,404	4,299	3,243	4,020	2,785	1,655	801	551
(WY)	(2002)	(1980)	(2002)	(1937)	(1950)	(1945)	(1996)	(1983)	(1997)	(1979)	(1977)	(1996)
MIN	14.3	20.0	17.6	40.3	78.0	70.8	263	91.2	41.0	44.8	29.8	18.8
(WY)	(1965)	(1964)	(1964)	(1977)	(1934)	(1941)	(1934)	(1934)	(1936)	(1954)	(1964)	(1953)

BLUE RIVER BASIN

03303000 BLUE RIVER NEAR WHITE CLOUD, IN—Continued

SUMMARY STATISTICS	FOR 2003 CALENDAR YEAR		FOR 2004 WATER YEAR		WATER YEARS 1932 - 2004	
ANNUAL TOTAL	258,147		313,657			
ANNUAL MEAN	707		857		661	
HIGHEST ANNUAL MEAN					1,199	1950
LOWEST ANNUAL MEAN					140	1941
HIGHEST DAILY MEAN	9,780	Feb 23	19,100	May 28	27,300	Apr 30, 1996
LOWEST DAILY MEAN	29	Aug 29	41	Oct 13	9.6	Oct 17, 1964
ANNUAL SEVEN-DAY MINIMUM	35	Aug 23	53	Oct 8	11	Oct 12, 1964
MAXIMUM PEAK FLOW			23,600	May 29	29,400	Apr 30, 1996
MAXIMUM PEAK STAGE			19.93	May 29	23.30	Apr 30, 1996
ANNUAL RUNOFF (CFSM)	1.49		1.80		1.39	
ANNUAL RUNOFF (INCHES)	20.17		24.51		18.87	
10 PERCENT EXCEEDS	1,440		1,520		1,480	
50 PERCENT EXCEEDS	435		484		261	
90 PERCENT EXCEEDS	73		97		38	

e Estimated



03303300 MIDDLE FORK ANDERSON RIVER AT BRISTOW, IN

LOCATION.--Lat 38°08'20", long 86°43'16", in NW¹/₄SE¹/₄ sec.27, T.4 S., R.3 W., Perry County, Hydrologic Unit 05140201, (BRISTOW, IN quadrangle), on left bank at downstream side of bridge on State Highway 145 at Bristow, 2.0 mi downstream from Coon Branch, 6.0 mi upstream from Sulphur Fork Creek, and at mile 14.1.

DRAINAGE AREA.--39.8 mi².

PERIOD OF RECORD.--August 1961 to current year.

REVISED RECORDS.--WDR IN-72-1: Drainage area.

GAGE.--Water-stage recorder. Datum of gage is 395.00 ft above National Geodetic Vertical Datum of 1929.

REMARKS.--Records good except for estimated daily discharges, and those below 1 ft³/s, which are poor. Flow regulated by U.S. Forest Service and Middle Fork Anderson River Conservancy District control structures beginning June 1967.

EXTREMES OUTSIDE PERIOD OF RECORD.--Flood of Jan. 21, 1959, reached a stage of 20.0 ft, from floodmark, discharge 15,000 ft³/s from rating curve extended above 7,000 ft³/s. This is the maximum flood since 1905, from information by local resident.

DISCHARGE, CUBIC FEET PER SECOND
WATER YEAR OCTOBER 2003 TO SEPTEMBER 2004
DAILY MEAN VALUES

DAY	OCT	NOV	DEC	JAN	FEB	MAR	APR	MAY	JUN	JUL	AUG	SEP
1	3.8	4.4	44	35	32	19	42	388	324	4.7	1.6	8.4
2	0.68	5.4	31	277	110	24	39	483	209	6.1	1.6	7.1
3	0.33	6.4	25	328	345	35	36	432	119	4.7	1.5	5.6
4	0.32	7.0	21	575	214	321	32	407	81	4.6	1.3	3.8
5	0.08	7.1	23	e510	152	241	28	320	60	3.9	1.5	2.6
6	0.07	6.4	23	e420	253	203	26	141	47	4.0	1.4	1.7
7	0.06	6.9	21	e370	180	134	24	68	38	6.1	1.2	1.4
8	e0.06	7.1	18	e230	115	93	22	47	32	4.8	1.1	1.2
9	e0.06	7.1	17	81	85	68	20	35	50	3.9	0.97	1.0
10	e0.05	6.5	23	53	68	51	18	28	59	3.4	1.0	0.88
11	e0.05	6.6	26	43	57	43	18	23	41	3.2	0.91	0.71
12	e0.05	14	23	38	50	36	18	20	63	12	0.77	0.61
13	e0.06	16	20	33	44	32	87	18	101	14	0.67	0.54
14	0.42	11	20	30	39	29	201	18	82	16	0.59	0.48
15	1.3	10	19	27	35	27	115	27	58	13	0.54	0.47
16	1.3	9.7	22	24	31	47	81	27	44	11	0.50	0.52
17	1.1	7.6	25	26	28	53	62	26	34	10	0.44	0.50
18	1.1	36	27	119	26	44	49	31	26	9.5	0.41	0.35
19	1.1	74	32	100	25	38	40	38	33	7.9	0.37	0.30
20	0.93	46	29	69	25	79	34	67	24	5.6	0.52	0.24
21	0.91	29	26	54	23	103	30	58	18	4.0	0.71	0.21
22	6.9	20	24	45	21	56	47	44	15	2.9	0.85	0.19
23	5.2	14	27	36	20	43	199	32	12	3.1	1.1	0.16
24	1.3	48	34	33	19	36	179	25	10	3.3	1.5	0.22
25	0.97	37	30	30	18	32	239	215	8.6	3.1	3.9	0.27
26	4.3	25	26	32	17	28	189	607	7.0	2.8	38	0.32
27	1.6	129	23	61	16	28	116	592	5.9	2.6	46	0.29
28	0.78	183	21	54	15	26	80	567	5.1	2.3	29	0.27
29	0.64	110	25	47	15	26	60	449	4.6	2.0	19	0.26
30	0.78	67	49	43	---	34	133	388	4.0	1.8	12	0.25
31	2.7	---	41	41	---	42	---	405	---	1.8	9.1	---
TOTAL	39.00	957.2	815	3,864	2,078	2,071	2,264	6,026	1,615.2	178.1	180.05	40.84
MEAN	1.26	31.9	26.3	125	71.7	66.8	75.5	194	53.8	5.75	5.81	1.36
MAX	6.9	183	49	575	345	321	239	607	324	16	46	8.4
MIN	0.05	4.4	17	24	15	19	18	18	4.0	1.8	0.37	0.16
CFSM	0.03	0.80	0.66	3.13	1.80	1.68	1.90	4.88	1.35	0.14	0.15	0.03
IN.	0.04	0.89	0.76	3.61	1.94	1.94	2.12	5.63	1.51	0.17	0.17	0.04

STATISTICS OF MONTHLY MEAN DATA FOR WATER YEARS 1962 - 2004, BY WATER YEAR (WY)

MEAN	9.47	37.1	73.6	80.8	97.7	121	109	81.6	32.5	16.3	11.1	10.1
MAX	63.7	194	224	223	245	393	312	405	190	141	162	78.8
(WY)	(1978)	(1980)	(2002)	(1982)	(1989)	(1964)	(1972)	(1983)	(1979)	(1979)	(1979)	(1982)
MIN	0.00	0.00	0.00	2.78	5.66	33.4	15.7	2.37	0.82	0.38	0.01	0.00
(WY)	(1965)	(1964)	(1964)	(1964)	(1992)	(1990)	(2001)	(2001)	(1988)	(1968)	(1965)	(1964)

ANDERSON RIVER BASIN

03303300 MIDDLE FORK ANDERSON RIVER AT BRISTOW, IN—Continued

SUMMARY STATISTICS	FOR 2003 CALENDAR YEAR		FOR 2004 WATER YEAR		WATER YEARS 1962 - 2004	
ANNUAL TOTAL	17,879.41		20,128.39		56.5	
ANNUAL MEAN	49.0		55.0		122	
HIGHEST ANNUAL MEAN					15.2	
LOWEST ANNUAL MEAN					1979	
HIGHEST DAILY MEAN	598	Feb 22	607	May 26	4,870	Mar 9, 1964
LOWEST DAILY MEAN	0.05	Oct 10	e 0.05	Oct 10	0.00	Oct 2, 1961
ANNUAL SEVEN-DAY MINIMUM	0.06	Oct 7	0.06	Oct 7	0.00	Oct 9, 1961
MAXIMUM PEAK FLOW			1,070	May 25	6,360	Mar 9, 1964
MAXIMUM PEAK STAGE			14.39	May 25	19.33	Mar 4, 1964
ANNUAL RUNOFF (CFSM)	1.23		1.38		1.42	
ANNUAL RUNOFF (INCHES)	16.71		18.81		19.29	
10 PERCENT EXCEEDS	121		136		147	
50 PERCENT EXCEEDS	20		24		15	
90 PERCENT EXCEEDS	1.1		0.57		0.20	

e Estimated

