

**U.S. Geological Survey Karst Interest Group
Proceedings, Rapid City, South Dakota
September 12-15, 2005**



Scientific Investigations Report 2005-5160

U.S. Geological Survey Karst Interest Group Proceedings, Rapid City, South Dakota September 12-15, 2005

Edited by Eve L. Kuniansky

Prepared in cooperation with U.S. Army Environmental Center

Scientific Investigations Report 2005-5160

**U.S. Department of the Interior
U.S. Geological Survey**

U.S. Department of the Interior

Gale A. Norton, Secretary

U.S. Geological Survey

Charles G. Groat, director

U.S. Geological Survey, Reston, Virginia: 2005

For sale by U.S. Geological Survey, Information Services
Box 25286, Denver Federal Center
Denver, CO 80225

For more information about the USGS and its products:
Telephone: 1-888-ASK-USGS
World Wide Web: <http://www.usgs.gov/>

Any use of trade, product, or firm names in this publication is for descriptive purposes only and does not imply endorsement by the U.S. Government.

Although this report is in the public domain, permission must be secured from the individual copyright owners to reproduce any copyrighted materials contained with this report.

Suggested citation:

Kuniansky, E.L., 2005, U.S. Geological Survey Karst Interest Group proceedings, Rapid City, South Dakota, September 12-15, 2005: U.S. Geological Survey Scientific Investigations Report 2005-5160, 296 p.

Contents

Introduction and Acknowledgments	1
Agenda, U.S. Geological Survey Karst Interest Group Workshop.....	3
National Programs	
Establishing the National Cave and Karst Research Institute as a Robust Research and Education Center, by Louise D. Hose	9
Geophysical Methods for Karst Studies	
The State of the Art of Geophysics and Karst: A General Literature Review, by D.V. Smith.....	10
Review of Airborne Electromagnetic Geophysical Surveys over Karst Terrains, by Bruce D. Smith, Jeffrey T. Gamey, and Greg Hodges	17
Overview of Karst Effects and Karst Detection in Seismic Data from the Oak Ridge Reservation, Tennessee, by W.E. Doll, B.J. Carr, and J.R. Sheehan, and W.A. Mandell	20
Application of Seismic Refraction Tomography to Karst Cavities, by Jacob R. Sheehan, and William E. Doll, David B. Watson, and Wayne A. Mandell	29
Borehole Geophysical Techniques to Determine Groundwater Flow in the Freshwater/Saline-Water Transition of the Edwards Aquifer, South Central Texas, by R.B. Lambert, A.G. Hunt, and G.P. Stanton, and John Waugh	39
An Evaluation of Methods Used to Measure Horizontal Borehole Flow, by Wayne A. Mandell, James R. Ursic, William H. Pedler, Jeffrey J. Jantos, E. Randall Bayless, and Kirk G. Thideaux.....	40
The Edwards Aquifer, Texas	
Characterization of Hydrostratigraphic Units of the Capture, Recharge, and Confining Zones of the Edwards Aquifer using Electrical and Natural Gamma Signatures, Medina, Uvalde, And Bexar Counties, Texas, by Bruce D. Smith, Allan K. Clark, Jason R. Faith, and Gregory P. Stanton	41
Use of Helium Isotopes to Discriminate Between Flow Paths Associated with the Freshwater/Saline Water Transition Zone of the Edwards Aquifer, South Central Texas, by Andrew G. Hunt, Rebecca B. Lambert, Gary P. Landis, and John Waugh	42
Airborne and Ground Electrical Surveys of the Edwards and Trinity aquifers, Medina, Uvalde, and Bexar Counties, Texas, by Bruce D. Smith, David V. Smith, Jeffrey G. Paine, and Jared D. Abraham	43
Magnetic Geophysical Applications Reveal Igneous Rocks and Geologic Structures in the Edwards Aquifer, Texas, by D.V. Smith, C. Foss, and B.D. Smith.....	44
Structural Controls on Karst Development in Fractured Carbonate Rock, Edwards and Trinity Aquifers, South-Central Texas, by Jason R. Faith, Charles D. Blome, Allan K. Clark, George B. Ozuna, and Bruce D. Smith	45

Numerical Modeling of Karst Systems

Simulating Ground-Water Flow in the Karstic Madison Aquifer using a Porous Media Model, by L.D. Putnam and A.J. Long.....	46
Dual Conductivity Module (DCM), A MODFLOW Package for Modeling Flow in Karst Aquifers, by Scott L. Painter, Ronald T. Green, and Alexander Y. Sun.....	47
Conceptualization and Simulation of the Edwards Aquifer, San Antonio Region, Texas, by R.J. Lindgren, A.R. Dutton, S.D. Hovorka, S.R.H. Worthington, and Scott Painter.....	48
The role of MODFLOW in numerical modeling of karst flow systems, by J. J. Quinn, David Tomasko, and J.A. Kuiper.....	58

Springs and the Use of Geochemistry in Karst Studies

The Case of the Underground Passage: Putting the Clues Together to Understand Karst Processes, by B. Mahler, B. Garnier, and N. Massei.....	63
Spatial and Temporal Variations in Epikarst Storage and Flow in South Central Kentucky's Pennyroyal Plateau Sinkhole Plain, by Chris Groves, Carl Bolster, and Joe Meiman.....	64
Comparison of Water Chemistry in Spring and Well Samples from Selected Carbonate Aquifers in the United States, by Marian P. Berndt, Brian G. Katz, Bruce D. Lindsey, Ann F. Ardis, and Kenneth A. Skach.....	74
Interpretation of Water Chemistry and Stable Isotope Data from a Karst Aquifer According to Flow Regimes Identified through Hydrograph Recession Analysis, by D.H. Doctor and E.C. Alexander, Jr.	82

Hydrogeologic Mapping and Tracer Techniques in Karst Areas

An Appalachian Regional Karst Map and Progress Towards a New National Karst Map, by D.J. Weary.....	93
Hydrogeologic Framework Mapping of Shallow, Conduit-Dominated Karst—Components of a Regional GIS-Based Approach, by Charles J. Taylor, Hugh L. Nelson Jr., Gregg Hileman, and William P. Kaiser	103
Application of Multiple Tracers to Characterize Sediment and Pathogen Transport in Karst, by Tiong Ee Ting, Ralph K. Davis, J.V. Brahana, P.D. Hays, and Greg Thoma.....	114
Estimating Ground-Water Age Distributions from CFC and Tritium Data in the Madison Aquifer, Black Hills, South Dakota, by Andrew J. Long and Larry D. Putnam	115
A Multi-Tracer Approach for Evaluating the Transport of Whirling Disease to Mammoth Creek Fish Hatchery Springs, Southwestern Utah, by Larry E. Spangler, Meiping Tong, and William Johnson.....	116

Black Hills and Evaporite Karst

National Evaporite Karst—Some Western Examples, by Jack B. Epstein.....	122
Gypsum and Carbonate Karst Along the I-90 Development Corridor, Black Hills, South Dakota, by Larry D. Stetler and Arden D. Davis.....	134
Karst Features as Animal Traps: Approximately 500,000 Years Of Pleistocene And Holocene Fauna and Paleoenvironmental Data in the Northern High Plains, by Larry D. Agenbroad and Kristine M. Thompson.....	135
Developing a Cave Potential Map of Wind Cave to Guide Exploration Efforts, by Rodney D. Horrocks	141
The Potential Extent of the Jewel Cave System, by Michael E. Wiles.....	142

Karst Studies in Arkansas and the Ozarks

Geologic Controls on a Transition Between Karst Aquifers at Buffalo National River, Northern Arkansas, by Mark R. Hudson, David N. Mott, and Kenzie J. Turner, and Kyle E. Murray	143
Quantification of Hydrologic Budget Parameters for the Vadose Zone and Epikarst in Mantled Karst, by J.V. Brahana, Tiong Ee Ting, Mohammed Al-Qinna, John F. Murdoch, Ralph K. Davis, Jozef Laincz, Jonathan J. Killingbeck, Eva Szilvagy, Margaret Doheny-Skubic, Indrajeet Chaubey, P.D. Hays, and Gregg Thoma.....	144
Characterization of Nutrient Processing at the Field and Basin Scale in the Mantled Karst of the Savoy Experimental Watershed, Arkansas, by Jozef Laincz, P.D. Hays, Sue Ziegler, Byron Winston, J.V. Brahana, Ken Steele, Indrajeet Chaubey, and Ralph K. Davis.....	153

Water Supply and Land Use Issues in Karst Areas

Transport Potential of <i>Cryptosporidium parvum</i> Oocysts in a Drinking-Water, Karstic-Limestone Aquifer: What We Have Learned Using Oocyst-Sized Microspheres in a 100-m Convergent Tracer Test at Miami's Northwest Well Field, by Ronald W. Harvey, Allen M. Shapiro, Robert A. Renken, David W. Metge, Joseph N. Ryan, Christina L. Osborn, and Kevin J. Cunningham	154
Ground-Water Quality Near a Swine Waste Lagoon in a Mantled Karst Terrane in Northwestern Arkansas, by Christopher M. Hobza, David C. Moffit, Danny P. Goodwin, Timothy Kresse, John Fazio, John V. Brahana, and Phillip D. Hays.....	155
Vulnerability (Risk) Mapping of the Madison Aquifer near Rapid City, South Dakota, by Scott L. Miller, Arden D. Davis, and Alvis L. Lisenbee	163
Hydrogeologic Characteristics of Four Public Drinking-Water Supply Springs in the Ozark Plateaus of Northern Arkansas, by Joel M. Galloway	164
Adaptation of the Residence Time Distribution (RTD)-Biodegradation Model to Quantify Peroxide-Enhanced Fuel Biodegradation in a Single Karst Well, by Lashun K. King, Roger D. Painter, and T.D. Byl	174
Free-Living Bacteria or Attached Bacteria: Which Contributes More to Bioremediation? by Roger D. Painter, Shawkat Kochary, and T.D. Byl.....	180
Desorption Isotherms for Toluene and Karstic Materials and Implications for Transport in Karst Aquifers, by Mario Beddingfield, Khalid Ahmed, Roger Painter, and T.D. Byl.....	188
A Computer Program that Uses Residence-Time Distribution and First-Order Biodegradation to Predict BTEX Fate in Karst Aquifers, by Ryan Fitzwater, Roger Painter, Valetta Watson, and T.D. Byl.....	189
Lactate Induction of Ammonia-Oxidizing Bacteria and PCE Cometabolism, by LyTreese Hampton, Roneisha Graham, and T.D. Byl	190
Biodegradation of Toluene as It Continuously Enters a 5-Liter Laboratory Karst System, by Fuzail Faridi, Roger Painter, and T.D. Byl	191
Bacteria Induced Dissolution of Limestone in Fuel-Contaminated Karst Wells, by Serge Mondesir and T. D. Byl	192

Field Trip Guides

Introduction to Three Field Trip Guides: Karst Features in the Black Hills, Wyoming and South Dakota-
Prepared for the Karst Interest Group Workshop, September 2005, by Jack B. Epstein
and Larry D. Putnam 193

Field Trip Guide 1 Karst Features of the Southern Black Hills, South Dakota, Karst Interest Group
Workshop, September 12, 2005, by Jack B. Epstein, Larry Agenbroad, Mark Fahrenbach, Rodney D.
Horrocks, Andrew J. Long, Larry D. Putnam, J. Foster Sawyer, and Kristine M. Thompson 199

Field Trip Guide 2 Karst Features of the Northern Black Hills, South Dakota and Wyoming, Karst Interest
Group workshop, September 15, 2005, by Jack B. Epstein, Arden D. Davis, Andrew J. Long,
Larry D. Putnam, and J.Foster Sawyer..... 232

Field Trip Guide 3 for a Self-Guided Trip to Karst Features of the Western Black Hills, Wyoming and South Dakota,
Karst Interest Group Workshop, September 12-15, 2005, by Jack B. Epstein 283

INTRODUCTION AND ACKNOWLEDGMENTS

Karst aquifer systems are present throughout parts of the United States and some of its territories. The complex depositional environments that form carbonate rocks combined with post-depositional tectonic events and the diverse climatic regimes under which these rocks were formed, result in unique systems. The dissolution of calcium carbonate and the subsequent development of distinct and beautiful landscapes, caverns, and springs have resulted in some karst areas of the United States being designated as national or state parks and commercial caverns. Karst aquifers and landscapes that form in tropical areas, such as the north coast of Puerto Rico differ greatly from karst areas in more arid climates, such as central Texas or South Dakota. Many of these public and private lands contain unique flora and fauna associated with the karstic hydrologic systems. Thus, multiple Federal, state, and local agencies have an interest in the study of karst areas.

Carbonate sediments and rocks are composed of greater than 50 percent carbonate (CO_3) and the predominant carbonate mineral is calcium carbonate or limestone (CaCO_3). Unlike terrigenous clastic sedimentation, the depositional processes that produce carbonate rocks are complex, involving both biological and physical processes. These depositional processes impact greatly the development of permeability of the sediments. Carbonate minerals readily dissolve and precipitate depending on the chemistry of the water flowing through the rock, thus the study of both marine and meteoric diagenesis of carbonate sediments is multidisciplinary. Even with a better understanding of the depositional environment and the subsequent diagenesis, the dual porosity nature of karst aquifers presents challenges to scientists attempting to study ground-water flow and contaminant transport.

Many of the major springs and aquifers in the United States develop in carbonate rocks and karst areas. These aquifers and springs serve as major water-supply sources and as unique biological habitats. Commonly, there is competition for the water resources of karst aquifers, and urban development in karst areas can impact the ecosystem and water quality of these aquifers.

The concept for developing a Karst Interest Group evolved from the November 1999, National Ground-Water Meeting of the U.S. Geological Survey, Water Resources Division. As a result, the Karst Interest Group was formed in 2000. The Karst Interest Group is a loose-knit grass-roots organization of U.S. Geological Survey employees devoted to fostering better communication among scientists working on, or interested in, karst hydrology studies.

The mission of the Karst Interest Group is to encourage and support interdisciplinary collaboration and technology transfer among U.S. Geological Survey scientists working in karst areas. Additionally, the Karst Interest Group encourages cooperative studies between the different disciplines of the U.S. Geological Survey and other Department of Interior agencies, and university researchers or research institutes.

The first Karst Interest Group Workshop was held in St. Petersburg, Florida, February, 13-16, 2001, in the vicinity of karst features of the Floridan aquifer. The proceeding of that first meeting, Water-Resources Investigations Report 01-4011 is available online at: <http://water.usgs.gov/ogw/karst/index.htm>. The U.S. Geological Survey, Office of Ground Water, provides support for the Karst Interest Group website.

The second Karst Interest Group workshop was held August 20-22, 2002 in Shepherdstown, West Virginia, in close proximity to the carbonate aquifers of the northern Shenandoah Valley. The proceedings

of the second workshop were published in Water-Resources Investigations Report 02-4174, which is available online at the previously mentioned website.

The third workshop of the Karst Interest Group was held September 12-15, 2005 in Rapid City, South Dakota, which is in close proximity to karst features in the semi-arid Black Hills of South Dakota and Wyoming, Wind Cave National Park and Jewel Cave National Monument, and the Madison Limestone aquifer. Financial support of the third workshop was obtained from Wayne A. Mandell, U.S. Army Environmental Center; Louise Hose, National Cave and Karst Research Institute; Thomas J. Casadevall, Regional Director, Central Region, U.S. Geological Survey; and Kevin F. Dennehy, Ground-Water Resources Program Coordinator, U.S. Geological Survey.

Numerous individuals contributed to the workshop and proceedings, and especially to the development of the field trips to karst features of the Black Hills in South Dakota and Wyoming. Three field trips were offered at this workshop, none of which were duplicative, as evidenced in the three field trip guides. Trips to the southern and northern karst features of the Black Hills were scheduled for Monday and Thursday and the third field trip to the western part of the Black Hills was designed to be accomplished on your own using the field trip guide. These field trips allow attendees of all the previous workshops to compare karst in the more humid eastern United States to karst in the semi-arid central United States. Geologist Emeritus, USGS, Jack Epstein agreed to help lead the planning and development of the field trips and field trip guides. The members of the Field Trip Committee are: David Weary, Andrew Long, and Larry Putnam, USGS; Rod Horrocks and Mike Wiles, National Park Service; Arden Davis and Scott Miller, South Dakota SMT; Larry Agenbroad and Kristine Thomas, Mammoth Site; Mark Fahrenbach and Foster Sawyer, South Dakota Department of Environmental and Natural Resources; and Bob Paulson, The Nature Conservancy. Larry Putnam also helped with logistical support for the field trips and the meeting. Additionally, Linda Stool and Todd Suess, Superintendents of Wind and Jewel Cave National Parks, respectively, have given permission for two guided evening trips for 25 people at their Parks. Rod Horrocks and Mike Wiles, Cave Specialists at Wind and Jewel Cave National Parks, respectively, will lead each evening trip.

The session planning committee for this third workshop included: Louise Hose, National Cave and Karst Research Institute; and Alan Burns, Kevin Dennehy, Perry Jones, Brian Katz, Eve Kuniansky, Randy Orndorff, Bruce Smith, Larry Spangler, Greg Stanton, and Chuck Taylor, U.S. Geological Survey, and Jack Epstein, Geologist Emeritus, U.S. Geological Survey. We sincerely hope that this workshop promotes future collaboration among scientists of varied backgrounds and improves our understanding of karst systems in the United States and its territories.

The extended abstracts of U.S. Geological Survey authors were reviewed and approved for publication by the U.S. Geological Survey. Articles submitted by university researchers and other Department of Interior agencies did not go through the U.S. Geological Survey review process, and therefore may not adhere to our editorial standards or stratigraphic nomenclature. All articles were edited for consistency of appearance in the published proceedings. The use of trade names in any article does not constitute endorsement by the U.S. Government.

The cover illustration was designed by Ann Tihansky, U.S. Geological Survey, St. Petersburg, Florida, for the first Karst Interest Group Workshop.

Eve L. Kuniansky
Karst Interest Group Coordinator

AGENDA
U.S. GEOLOGICAL SURVEY
KARTS INTEREST GROUP WORKSHOP

September 12-15, 2005

Rapid City South Dakota
Rushmore Plaza Civic Center
444 Mt. Rushmore Road
Rapid City, South Dakota 57701

Monday, September 12

Time Title

8:00 – 5:00 Field Trip 1 Karst Features of the Southern Black Hills

NOTE: BUS LEAVES FROM THE HOLIDAY INN PARKING LOT
ADJACENT TO THE RUSHMORE PLAZA CIVIC CENTER -- 505 North
Fifth Street, Rapid City, SD.

Tuesday, September 13

Registration

All day – pick up name tags and proceedings

Welcome

8:30 – 8:40 Welcome-Eve Kuniansky, U.S. Geological Survey, Karst Interest Group Coordinator

Geophysical Methods for Karst Studies

8:40 – 9:00 The State of the Art of Geophysics and Karst: A General Literature Review—David V. Smith, U.S. Geological Survey

9:00 – 9:20 Review of Airborne Electromagnetic Geophysical Surveys over Karst Terrains—
Bruce D. Smith, U.S. Geological Survey, Jeffrey T. Gamey, Battelle, and Greg Hodges,
Fugro Airborne

9:20 – 9:40 Overview of Karst Effects and Karst Detection in Seismic Data from the Oak Ridge
Reservation, Tennessee—William E. Doll, Battelle, Bradley J. Carr, Geophex, and Jacob R.
Sheehan, Battelle, and Wayne A. Mandell, U.S. Army Environmental Center

9:40 – 10:00 Application of Seismic Refraction Tomography to Karst Cavities—Jacob R. Sheehan
and William E. Doll, Battelle, David B. Watson, Environmental Sciences Division, Oak
Ridge National Laboratory, and Wayne A. Mandell, U.S. Army Environmental Center

10:00 – 10:40 BREAK

10:40 – 11:00 Borehole Geophysical Techniques to Determine Groundwater Flow in the
Freshwater/Saline-Water Transition of the Edwards Aquifer, South Central Texas—
Rebecca B. Lambert, Andrew G Hunt, and Gregory P. Stanton, U.S. Geological Survey,
and John Waugh, San Antonio Water System

The Edwards Aquifer, Texas

11:00 – 11:20 Characterization of Hydrostratigraphic Units of the Capture, Recharge, and Confining
Zones of the Edwards Aquifer using Electrical and Natural Gamma Signatures, Medina,
Uvalde, and Bexar Counties, Texas—Bruce D. Smith, Allan K. Clark, Jason R. Faith,
and Greg Stanton, U.S. Geological Survey

11:20 – 11:40 Use of Helium Isotopes to Discriminate Between Flow Paths Associated with the Freshwater/Saline Water Transition Zone of the Edwards Aquifer, South Central Texas—Andrew G. Hunt, Rebecca B. Lambert, and Gary P. Landis, U.S. Geological Survey, and John Waugh, San Antonio Water System

11:40 – 1:20 **LUNCH** At the Civic Center, Luncheon Speakers, Tom Casadevall, Central Regional Director, U.S. Geological Survey, plus update from Louise Hose, Director of the National Cave and Karst Research Institute, “Establishing the National Cave and Karst Research Institute as a Robust Research and Education Center”

Numerical Modeling of Karst Systems

1:20 – 1:40 Simulating Ground-Water Flow in the Karstic Madison Aquifer using a Porous Media Model—Larry Putnam and Andy Long, U.S. Geological Survey

1:40 – 2:00 Dual Conductivity Module (DCM), A MODFLOW Package for Modeling Flow in Karst Aquifers—Scott L. Painter, Ronald T. Green, and Alexander Y. Sun, Southwest Research Institute

2:00 – 2:40 Conceptualization and Simulation of the Edwards Aquifer, San Antonio Region, Texas—Richard J. Lindgren, U.S. Geological Survey, Alan R. Dutton, University of Texas, Susan D. Hovorka, Bureau of Economic Geology, S.R.H. Worthington, Worthington Groundwater, and Scott L. Painter, Southwest Research Institute

2:40 – 3:20 **BREAK**

Springs and the Use of Geochemistry in Karst Studies

3:20 – 3:40 The Case of the Underground Passage: Putting the Clues Together to Understand Karst Processes—Barbara Mahler, U.S. Geological Survey, B. Garner, and N. Massei, Département de Géologie, Université de Rouen,

3:40 – 4:00 Spatial and Temporal Variations in Epikarst Storage and Flow in South Central Kentucky’s Pennyroyal Plateau Sinkhole Plain—Chris Groves, Western Kentucky University, Carl Bolster, U. S. Department of Agriculture, and Joe Meiman, National Park Service

4:00 – 4:20 Comparison of Water Chemistry in Spring and Well Samples from Selected Carbonate Aquifers in the United States—Marian P. Berndt, Brian G. Katz, Bruce D. Lindsey, Ann F. Ardis, and Kenneth A. Skach, U.S. Geological Survey

4:20 – 4:40 Interpretation of Water Chemistry and Stable Isotope Data from a Karst Aquifer According to Flow Regimes Identified through Hydrograph Recession Analysis—Daniel H. Doctor, U.S. Geological Survey and E. Calvin Alexander, Jr., University of Minnesota

4:40 – 6:40 **POSTER SESSION**

Wednesday, September 14

Time	Title
<i>Hydrogeologic Mapping and Tracer Techniques in Karst Areas</i>	
8:00 – 8:20	An Appalachian Regional Karst Map and Progress Towards a New National Karst Map—David J. Weary, U.S. Geological Survey
8:20 – 8:40	Hydrogeologic Framework Mapping of Shallow, Conduit-Dominated Karst—Components of a Regional GIS-Based Approach—Charles J. Taylor, Hugh L. Nelson Jr., Gregg Hileman, and William P. Kaiser, U.S. Geological Survey
8:40 – 9:00	Application of Multiple Tracers to Characterize Sediment and Pathogen Transport in Karst—Tiong Ee Ting, Ralph Davis, Van Brahana, P.D. Hays, and Greg Thoma, University of Arkansas
9:00 – 9:20	Estimating Ground-Water Age Distributions from CFC and Tritium Data in the Madison Aquifer, Black Hills, South Dakota—Andrew Long and Larry Putnam, U.S. Geological Survey
<i>Black Hills and Evaporite Karst</i>	
9:20 – 9:40	National Evaporite Karst—Some Western Examples—Jack Epstein, U.S. Geological Survey, Geologist Emeritus
9:40 – 10:00	Black Hills Evaporite Karst: A Multi-Tiered Dissolution Front—Jack Epstein, U.S. Geological Survey, Geologist Emeritus
10:00 – 10:40	BREAK
10:40 – 11:00	Gypsum and Carbonate Karst Along the I-90 Development Corridor, Black Hills, South Dakota—Larry D. Stetler and Arden D. Davis, Department of Geology and Geological Engineering, South Dakota School of Mines and Technology
11:00 – 11:20	Karst Features as Animal Traps: Approximately 500,000 Years Of Pleistocene And Holocene Fauna and Paleoenvironmental Data in the Northern High Plains—Larry D. Agenbroad and Kristine M. Thompson, Mammoth Site of Hot Springs, South Dakota, Incorporated
11:20 – 11:40	Developing a Cave Potential Map of Wind Cave to Guide Exploration Efforts—Rod Horrocks, National Park Service
11:40 – 12:00	The Potential Extent of the Jewel Cave System—Mike Wiles, National Park Service
12:00 – 1:40	LUNCH At the Civic Center, Luncheon Speaker, Larry Agenbroad—Mammoth Site
<i>Karst Studies in Arkansas and the Ozarks</i>	
1:40 – 2:00	Geologic Controls on a Transition Between Karst Aquifers at Buffalo National River, Northern Arkansas—Mark R. Hudson, U.S. Geological Survey, David N. Mott, National Park Service, and Kenzie J. Turner and Kyle E. Murray, University of Texas, San Antonio
2:00 – 2:20	Quantification of Hydrologic Budget Parameters for the Vadose Zone and Epikarst in Mantled Karst—Van Brahana, Tiong Ee Ting, Mohammed Al-Qinna, John Murdoch, Ralph Davis, Jozef Laincz, Jonathan J. Killingbeck, Eva Szilvagy, Margaret Doheny-Skubic, and Indrajeet Chaubey, University of Arkansas, and P.D. Hays, U.S. Geological Survey

2:20 – 2:40 Characterization of Nutrient Processing at the Field and Basin Scale in the Mantled Karst of the Savoy Experimental Watershed, Arkansas—Jozef Laincz, Sue Ziegler, Byron Winston, Van Brahana, Ken Steele, Indrajeet Chaubey, and Ralph Davis, University of Arkansas, and Phil Hays, U.S. Geological Survey

2:40 – 3:00 BREAK

Water Supply and Land Use Issues in Karst Areas

3:00 – 3:20 Transport Potential of *Cryptosporidium parvum* Oocysts in a Drinking-Water, Karstic-Limestone Aquifer: What We Have Learned Using Oocyst-Sized Microspheres in a 100-m Convergent Tracer Test at Miami's Northwest Well Field—Ronald W. Harvey, Allen M. Shapiro, Robert A. Renken, David W. Metge, Joseph N. Ryan, Christina L. Osborn, and Kevin J. Cunningham, U.S. Geological Survey

3:20 – 3:40 Ground-Water Quality Near a Swine Waste Lagoon in a Mantled Karst Terrane in Northwestern Arkansas—Christopher Hobza and Phillip D. Hays, U.S. Geological Survey, David C. Moffit and Danny Goodwin, Natural Resources Conservation Service, and Van Brahana, University of Arkansas

3:40 – 4:00 Vulnerability (Risk) Mapping of the Madison Aquifer near Rapid City, South Dakota—Scott Miller, Arden D. Davis, and Alvis L. Lisenbee, South Dakota School of Mines and Technology, Department of Geology and Geological Engineering

4:00 – 4:20 Hydrogeologic Assessment of Four Public Drinking-Water Supply Springs in the Ozark Plateaus of Northern Arkansas—Joel M. Galloway, U.S. Geological Survey

4:20 – 6:20 **POSTER SESSION**

Thursday, September 15

8:00 – 5:00 Field Trip 2 Karst Features of the Northern Black Hills

NOTE: BUS LEAVES FROM THE HOLLIDAY INN PARKING LOT
ADJACENT TO THE RUSHMORE PLAZA CIVIC CENTER — 505 North
Fifth Street, Rapid City, SD.

Poster Session Titles

A Multi-Tracer Approach for Evaluating the Transport of Whirling Disease to Mammoth Creek Fish Hatchery Springs, Southwestern Utah, by Larry Spangler, U.S. Geological Survey, Meiping Tong and William Johnson, University of Utah

The role of MODFLOW in numerical modeling of karst flow systems, by John J. Quinn, David Tomasko, and James A. Kuiper, Argonne National Laboratory

Structural Controls on Karst Development in Fractured Carbonate Rock, Edwards and Trinity Aquifers, South-Central Texas, by Jason R. Faith, Charles D. Blome, Allan K. Clark, and Bruce D. Smith, U.S. Geological Survey

Structural and Stratigraphic 3-D Modeling of the Edwards Aquifer, Medina County, Texas, Using helicopter EM Survey Data to Evaluate and Extrapolate Geologic Mapping and Drillhole Data, by Michael P. Pantea, James C. Cole, Bruce D. Smith, and Maria Deszcz-Pan, U.S. Geological Survey

Airborne and Ground Electrical Surveys of the Edwards and Trinity aquifers, Medina, Uvalde, and Bexar Counties, Texas, by Bruce D. Smith, David V. Smith, Jeffrey G. Paine, and Jared D. Abraham, U.S. Geological Survey

An Evaluation of Methods Used to Measure Horizontal Borehole Flow, by Wayne A. Mandell, U.S. Army Environmental Center, James R. Ursic, U.S. Environmental Protection Agency, William H. Pedler and Jeffrey J. Jantos (RAS, Inc., Golden, Colorado), and E. Randall Bayless and Kirk G. Thideaux, U.S. Geological Survey

Magnetic Geophysical Applications Reveal Igneous Rocks and Geologic Structures in the Edwards Aquifer, Texas, by David V. Smith, U.S. Geological Survey, Clive Foss, Encom Technology, Sydney, Australia and Bruce D. Smith, U.S. Geological Survey

Desorption Isotherms for Toluene and Karstic Materials and Implications for Transport in Karst Aquifers, by Mario Beddingfield, Khalid Ahmed, and Roger Painter, Tennessee State University, and T.D. Byl, U.S. Geological Survey

A Computer Program that Uses Residence-Time Distribution and First-Order Biodegradation to Predict BTEX Fate in Karst Aquifers, by Ryan Fitzwater, Roger Painter, and Valetta Watson, Tennessee State University, and T.D. Byl, U.S. Geological Survey

Lactate Induction of Ammonia-Oxidizing Bacteria and PCE Cometabolism, by LyTreese Hampton and Roneisha Graham, Tennessee State University, and T.D. Byl, U.S. Geological Survey

Biodegradation of Toluene as It Continuously Enters a 5-Liter Laboratory Karst System, by Fuzail Faridi and Roger Painter, Tennessee State University, and T.D. Byl, U.S. Geological Survey

Bacteria Induced Dissolution of Limestone in Fuel-Contaminated Karst Wells, by Serge Mondesir, Tennessee State University, and T. D. Byl, U.S. Geological Survey

Adaptation of the Residence Time Distribution (RTD)-Biodegradation Model to Quantify Peroxide-Enhanced Fuel Biodegradation in a Single Karst Well, by Lashun K. King and Roger D. Painter, Tennessee State University, and T.D. Byl, U.S. Geological Survey

Free-Living Bacteria or Attached Bacteria: Which Contributes More to Bioremediation?, by Roger D. Painter and Shawkat Kochary, Tennessee State University, and T.D. Byl, U.S. Geological Survey

Establishing the National Cave and Karst Research Institute as a Robust Research and Education Center

By Louise D. Hose

NCKRI-National Park Service, 1400 Commerce Dr., Carlsbad, NM 88220 LHose@nckri.org

ABSTRACT

The U.S. Congress directed the National Park Service (NPS) to establish the National Cave and Karst Research Institute (NCKRI) through legislation in 1998. The mandated purposes are to: (1) further the science of speleology; (2) centralize and standardize speleological information; (3) foster interdisciplinary cooperation in cave and karst research programs; (4) promote public education; (5) promote national and international cooperation in protecting the environment for the benefit of cave and karst landforms; and (6) promote and develop environmentally sound and sustainable resource management practices. To achieve this mission, an academic entity (now identified as New Mexico Institute of Mining and Technology) will administer NCKRI on a day-to-day basis while the NPS will retain “ultimate responsibility” and “indirect control.” An interim board of directors that includes representatives from a diverse collection of cave and karst programs nationwide is preparing Articles of Incorporation and Bylaws in conjunction with NPS and New Mexico Tech representatives to establish the National Cave and Karst Research Institute, Inc. The board and New Mexico Tech expect to formalize the 501.c.3 corporation and begin day-to-day operation of NCKRI by October 1, 2005.

The City of Carlsbad has designed and will soon build a 24,000 ft² headquarters building through a combination of state, federal, and local funding. They anticipate groundbreaking this fall and completion within two years. Another major effort for NCKRI involves a Karst Digital Portal initiative in partnership with the University of New Mexico and the University of South Florida. The conceived network portal will enhance information access and improved communication within the national and international karst community. The partnership will develop an on-line digital portal housed at the three institutions and provide free access to a variety of information including journal articles, images, maps, datasets, bibliographies, and gray literature. The portal should enhance international awareness and accessibility to National Karst Map products, as well.

The State of the Art of Geophysics and Karst: A General Literature Review

By D.V. Smith¹

¹U.S. Geological Survey, Box 25046 MS964, Denver, CO 80225-0046

ABSTRACT

To assess the state of the art of geophysics as applied to karst investigations, a general review of the literature over the period 2001-2005 was undertaken. This time frame witnessed rapid advances in instrumentation and data processing for interpretation and visualization of subsurface geology. Essentially, it has become possible to rapidly acquire, process and view high quality data in the field. GPS technology has been adapted to most commercial geophysical instruments, allowing for high geolocation accuracy with unprecedented ease. To answer the question: "What methods work best for karst investigations and under what conditions?", this review relied mainly on the GeoRef database for abstracts. GeoRef is an on-line indexing service maintained by the American Geological Institute. It is the most comprehensive database in the geosciences, with references to journal articles, society proceedings, books, theses, and government reports. Keyword searches were completed for a comprehensive list of geophysical methods, ranging from conventional to exotic. As a general review of a wide variety of methods, no attempt is made to explain the theory of operation beyond fundamental principles.

INTRODUCTION

Geophysical surveys have been performed for decades to characterize karst, sometimes with success, but often with mixed results. Their applicability to karst was summarized in past reviews (Greenfield, 1979, Dobecki, 1990). Now, due to advances in computerization, miniaturization, and data processing, combined with global position system (GPS) geolocation technology, it has become possible to conduct investigations with unprecedented speed and accuracy. With the recognition that no one technique can solve the problem at hand, whether geotechnical, geohydrological, or environmental, more emphasis is being placed on integrated surveys, in which two or more complementary methods are combined to constrain an interpretation. Examples abound, particularly seismic refraction combined with earth resistivity imaging (Sumanovac and Weisser, 2001), and different electrical methods (Tarhule and others, 2003). The success of the recent advances in geophysical methods is reflected not only in a growing geotechnical consulting industry, but also in the many studies and case histories presented by researchers, as the new hardware and software tools become available.

For simplicity, the methods are separated into surface, borehole, and airborne categories, since these strongly distinguish the various tools that are available.

SURFACE METHODS

Surface methods predominate in karst investigations, both because of available, the logistical ease of deployment, and the relatively low cost compared to airborne and borehole methods. Some attempts have been made to standardize the selection of different methods for specific problems (ASTM, 1999), but by and large the ones selected for use on any given assignment are based on time and cost. Surface methods fall into three broad categories: 1) electromagnetic, involving time-varying magnetic and electric fields across the spectrum, from DC (the static limit) to high frequencies, 2) seismic, based on the propagation of acoustic waves in earth media, and 3) potential field, including gravity and magnetics, for which the physics of potential field theory apply.

Electromagnetic

This category embraces the greatest variety of techniques, which cover the electromagnetic spectrum from DC (0 Hz) to UHF (100 MHz). Sources and detectors operate in electric and/or magnetic field mode in various

combinations and geometrical arrangements. The theory underpinning their operation, based upon Maxwell's equations, is mature and highly developed. Recent years have seen significant advances in instrumentation and data processing capabilities.

Multielectrode resistivity (referred to variously as electrical resistivity imaging (ERI) and electrical resistivity tomography (ERT)) is increasingly used because modern, automated multi-electrode control units simplify the acquisition of high quality data. Case histories are numerous, and excellent examples are readily available (Roth and others, 2002; Van Schoor, 2002). The topic of which array configuration is optimal for given site conditions has received attention (Zhou and others, 2002). Robust algorithms for generating pseudo-sections and inversions (resistivity profiles) are commercially available. While these instruments can acquire 3D data over a 2D spatial arrangement of electrodes, no true 3D inversions capability exists yet. Standard practice is to arrange 2D profiles in fence diagrams in order to visualize the 3D distribution of apparent resistivities. As a result, ambiguities are still introduced by lateral inhomogeneities.

Ground penetrating radar (GPR) finds wide application in karst investigations, particularly in settings like Florida where the limestones are horizontally stratified and the soils and overburden do not severely attenuate the signals. Interpretation is subjective and prone to error because of complex scattering phenomena and reflections from off-line (transverse) inhomogeneities, often referred to as 3D effects. Commercial GPR units are continually improved, and GPR research and applications are practiced worldwide (Baradello and Yabar, 2002). Case histories and developments are regularly reported in annual international conferences devoted to this method.

Frequency-domain electromagnetic (EM) surveys Time-domain electromagnetic (TEM) surveys for voids have been found to be more effective and cheaper than seismic in places (Xue and others, 2004). Software packages for interpreting both EM and TEM data. The very-low frequency (VLF) method has been used for decades for locating ground water aquifers. A recent paper (Bosch and

Mueller, 2001) describes a possible new approach for mapping karst.

Self potential (SP), also known as natural potential and streaming potential, continues to be used to distinguish active sinkholes from filled depressions (Adams and others, 2002; Vichabian and Morgan, 2002). Anomalous voltages are present over an air-filled cavity when ground water is inflowing from the surface.

Seismic

Small scale shallow seismic surveys are regularly performed in karst terrain, primarily to answer geotechnical questions relating to thickness of overburden and bedrock competency. By measuring the seismic velocities of compressional (P), shear (S), and/or surface (Rayleigh) waves, as they are either refracted or reflected off acoustic boundaries, a velocity-versus-depth profile can be derived along the seismic line. Steady improvements in instrumentation, seismic sources and inversion software make the seismic method attractive.

The multichannel analysis of surface waves (MASW) method is used to evaluate the elastic modulus of the shallow surface, and has been used to detect subsurface voids (Bonila and others, 2004). A similar method, spectral analysis of surface waves (SASW), employs an electromechanical harmonic shaker as a frequency-controlled active source (Kayen, 2005). Its use in karst investigations has not yet been reported.

The basal plane of epikarst has been determined from seismic refraction plus electrical resistivity and gravity, thus limiting the epikarst zone from geophysical point of view (Bosak and Benes, 2003). Seismic refraction tomography (P and S wave) was used with ERT and GPR to identify loosened rock around a cave at an archaeological site (Leucci, 2003).

While the theory and practice of seismology are well developed, on-going theoretical work on understanding effects of karst on acoustic wave scattering and attenuation (Hackert and Parra, 2003), may improved the practice.

Gravity

Gravity methods have long been used in karst investigations, mainly in search of voids and caverns. Tedious field work, involving careful surveying and tie points, has limited its use. A new generation of automated digital-output gravity meters attain 5 microGal accuracy, which is sufficient to detect shallow voids. Absolute gravity meters with 10 microGal accuracy are now available which eliminate the need to tie into an established benchmark. While global positioning systems (GPS) have generally replaced surveying with total stations, GPS elevation measurements are insufficiently accurate for void detection. The theoretical gravity vertical gradient is 3.086 microGal/cm. Therefore, to realize the precision of modern gravimeters, local elevation control has to be kept to about 1 cm. This can be done by combining GPS, to establish an accurate local benchmark, and an optical surveying instrument to measure relative elevations. Data analysis and modeling is made easier through automated corrections and advanced gravity inversion software, some of which uses 3D voxel models instead of 2D slab approximations. Micro-gravity has been used in conjunction with GPR to map shallow caves (Beres and others, 2001).

Magnetics

High-resolution ground magnetic surveys rarely take place in karst investigations. Carbonate rocks do not, as a rule, contain sufficient magnetic minerals to cause magnetic anomalies. In cases where high susceptibility sediments overlie karstic limestone, it is possible to map areas where the soils are depleted or concentrated, as with an active sinkhole. Magnetometers with 0.01 nT sensitivity can directly detect such voids and caves (Rybakov and others, 2005). Research into the origin of magnetic soils in karst regions (Rivers and others, 2004) can lead to the further application of magnetic surveys.

BOREHOLE METHODS

By placing geophysical instruments directly in the earth, borehole methods can offer superior results over surface methods – but at a cost: boreholes are not cheap, especially in karst. Many tools require open holes, while other tools can operate

through plastic casing. Furthermore, investigations involving tomographic techniques require multiple boreholes. Unlike surface methods, borehole methods are largely immune to above ground cultural noise. Because of the wealth of information obtained, every borehole should be logged as standard practice.

Integrated approaches to borehole data have been followed to identify high transmissivity zones (Brandon and others, 2001) and to investigate contamination in fractured sedimentary bedrock (Williams, 2002).

Electromagnetic

Much work has been done by the mining industry to detect voids and obstacles. There is a strong reliance on borehole radar to image the conditions around a single borehole (bi-static mode) and between pairs of boreholes (tomographic mode). Because the tools are expensive and difficult to use, they have found limited use in karst studies.

Logging

Borehole logging tools are now available with miniaturized versions of virtually all surface electromagnetic techniques, plus nuclear (gamma, neutron) measurement capabilities. Borehole logging should be considered indispensable during installation of a well, as it provides detailed lithologic and porosity information. Many case studies are reported annually (e.g., Brandon and others, 2001).

Televiwer

Visual and acoustic televiwers are extremely valuable in classifying porosity, fractures, and voids, as well as lithologic changes, as determined from fabric, grain, color. Combined with ArcGIS and Spatial Analyst software, digital images can be used to derive the spatial distribution of macropore density.

Seismic

The oil and gas industry relies heavily on borehole seismic techniques. Spin-offs of this technology have benefited near-surface geophysics, particularly in ground water investigations. Vertical seismic profiling (VSP), in which geophone receivers are lowered in a well to measure acoustic

waves generated by a source on the surface, and cross-well tomography (CWT), in which both receivers and sources are positioned in adjacent boreholes, have the capability of directly detecting cavities and conduits. Because of the high cost factor, these methods are still in the research stage as applied to karst studies, and are not widely used.

AIRBORNE METHODS

When it is impossible to gain access to land for laying out seismic lines or resistivity arrays, airborne methods offer one means of acquiring high resolution data. Though costly, they can be cost effective for large area reconnaissance mapping of large-scale structures under cover, such as faults and lithology. In karst terrain, surface conductivity variations can sometimes be related to surface subsidence over sinkholes.

Electromagnetic

Early work in a karst setting (Doll and others, 1993) and subsequent papers based on the helicopter data showed effectiveness in mapping geology in the Appalachian fold-and-thrust belt, and anomalies correlating with known karst features were noted (Doll and others, 2000). These anomalies were followed up using surface geophysical techniques. A program of airborne and surface geophysics was undertaken to delineate in potential pathways for contamination transport in karst (Gamey and others, 2001). More recent work (Smith and others, 2003; Hodges, 2004; Smith and others, 2005) demonstrated ability to map structure and lithology in a karst aquifer. However, the ability to map large voids and conduits has yet to be shown definitively. Future investigations using improved sensors and improved GPS will help answer this question.

Aeromagnetic

Although magnetic surveys cannot, as a rule, directly map karst features, they can provide valuable information on geologic structure. A high-resolution aeromagnetic survey was flown in 2001 over the western extent of the Edwards aquifer in Medina and Uvalde Counties, Texas. The objective of the survey was to improve the geohydrologic

framework of this important world-class karst aquifer. This data set (Smith and others, 2002) has helped to develop a 3D geologic model of the aquifer, which will be used to refine ground water models for aquifer management. In addition to analyzing how newly detected igneous bodies may influence regional ground water flow. Aeromagnetic data from a helicopter survey over a small study area centered on a sinkhole revealed a magnetic lineation aligned with a major fault juxtaposing the Edwards and Glen Rose limestones (Smith and Pratt, 2003).

LIDAR

Subtle changes in topographic features can be indicative of karst features, such as dolines and active sinkholes. Current light detection and ranging (LIDAR) systems can achieve accuracies of 15 cm vertically and less than 1 m horizontally at flying altitudes of 300 – 2,000 m. Measurements can be degraded by ground cover, however. One paper (Montane and Whitman, 2000) examined the relationship of LIDAR topography to subsurface karst structures, but no reports have since been published on the topic.

Remote Sensing

The airborne visible/infrared imaging spectrometer (AVIRIS) and satellite (LANDSAT) platforms obtain spectral and hyperspectral images of the earth's surface. Emissions in various bands can be related to vegetation and mineralization. Over karst terrain, variations of vegetation, in particular, can be used as indicators of active drainage and recharge sites. Other studies used photographic images and digital elevation models (Jemcov and others, 2002), and true geological remote sensing (Hung and Batelaan, 2003; Rouse and others, 2004). Aerial thermography, by which slight temperature variations (0.1 deg C) are mapped, has been used to characterize karst hydrology (Campbell and Keith, 2001).

FRONTIER METHODS

In very recent years commercial equipment has become available based on the surface nuclear magnetic resonance (SNMR) geophysical technique pioneered in Russia. The method of magnetic

resonance sounding (MRS) is based upon the precession of protons of hydrogen of water when acted on by a strong magnetic field. Its possible applications are beginning to be explored (Valla and Legchenko, 2003). The method has the capability of measuring the quantity and depth of free (not surface bound) water. Thus, it may be possible to detect perched water and water filled cavities in karst (Vouillamoz and Legchenko, 2003). Advances in this field are presented at an annual European Sym-

posium on NMR Spectroscopy in Soil, Geo and Environmental Sciences.

Gravity and magnetic tensor gradiometry are evolving rapidly as commercial versions of military systems become available. As gradiometric devices, they measure field variations caused by near sources more than from distance sources. Thus, tensor microgravimetry might prove effective in mapping density variations in the near surface.

REFERENCES

- Adams, A.L., Zhou, W., Wang, J., and Beck, B.F., 2002, A differentiation of karst hazards based on ground penetrating radar and natural potential measurements, in Abstracts with Programs, Geological Society of America, 34; 2, p. 89.
- ASTM International, 1999, D6429: Standard Guide for Selecting Surface Geophysical Methods
- Baradello, L., and Yabar, D.N., 2002, Singlefold and multifold GPR techniques to detect karst caves, *Alti del Museo Civico di Storia Naturale di Trieste*, 49, Suppl.; p. 23-28.
- Beres, M., Luetscher, M., Oliver, R., 2001, Integration of ground penetrating radar and microgravimetric methods to map shallow caves, *Journal of Applied Geophysics*, Vol. 46, No. 4.
- Bonila, C., Rehwoldt, E.B. and Dunscomb, M.H., 2004, Geophysical testing for voids caused by non-compacted backfill, in *Proceedings of the Symposium on Engineering Geology and Geotechnical Engineering*, 39, p. 197-205.
- Bosak, P., and Benes, V., 2003, Geophysical characteristics of epikarst; case studies from Zagros Mts. (Iran) and the Koneprusy region (Czech Republic), *Acta Carologica*, 32;2, p. 255-267.
- Bosch, F.P., and Mueller, I., 2001, Continuous gradient VLF measurements; a new possibility for high resolution mapping of karst structures, *First Break*, 19; 6, p. 343-349.
- Brandon, W.C., Behr, R.E., Blackey, M.E., and Zay, A., 2001, Identification of discrete high transmissivity zones in sparsely fractured limestone; an integrated approach using fracture trace analysis and surface and borehole geophysical methods, Loring, Maine, in Abstracts with Programs, Geological Society of America, 33; 6, p. 413.
- Campbell, C. W., and Keith, A.G., 2001, Karst groundwater hydrologic analyses based on aerial thermography, *Hydrological Science and Technology*, 17;1-4, p. 59-68.
- Dobecki, T.L., 1990, Review of geophysical methods for karst detection and mapping; *Bulletin of the Houston Geological Society*. 32; 5, p. 21-24.
- Doll, W.E., Nyquist, J.E., Holladay, J.S., Labson, V.F., and Pellerin, L., 1993, Preliminary Results of a Helicopter Electromagnetic and Magnetic Survey of the Oak Ridge Reservation, Tennessee for Environmental and Geologic Site Characterization, in *Proceedings of the Symposium on the Application of Geophysics to Engineering and environmental Problems*, p. 15.
- Doll, W.E., Nyquist, J.E., Beard, L.P., and Gamey, T.J., 2000, Case History: Airborne geophysical surveying for hazardous waste site characterization on the Oak Ridge Reservation, Tennessee, *Geophysics*, Vol. 65, No. 5, p. 1372-1387.
- Gamey, T.J., Thompson, M., Mandell, W., and Frano, G., 2001, Karst pathway delineation using combined spatial and geophysical analysis at Camp Crowder, Missouri, in Abstracts with Programs, Geological Society of America, 33; 6, p. 132.
- Greenfield, R.J., 1979, Review of geophysical approaches to the detection of karst; *Bulletin of the Association of Engineering Geologists*, 16; 3, p. 393-408.
- Hackert, C.L., and Parra, J.O., 2003, Estimating scattering attenuation from vugs or karsts, *Geophysics*, 68;4, p. 1182-1188.

- Hodges, G., 2004, Practical Inversions for Helicopter Electromagnetic Data: Airborne Geophysical Methods Workshop, Symposium on the Application of Geophysics to Environmental and Engineering Problems, p. 45-58.
- Hung, L.Q., and Batelaan, O., 2003, Environmental geological remote sensing and GIS analysis of tropical karst areas in Vietnam, International Geoscience and Remote Sensing Symposium (IGARSS), Vol. 4, p. 2964-2966.
- Jemcov, I., Pavlovic, R., and Stevanovic, Z., 2002, Morphotectonic analysis in hydrogeological research of karst terrains; a case study of SW Kucaj Massif, eastern Serbia, Theoretical and Applied Karstology, 15, p. 51-59.
- Kayen, R., 2005, The Spectral Analysis of Surface Waves Measured at William Street Park, San Jose, California, Using Swept-Sine Harmonic Waves, in Asten, M.W. and Boore, D.M., eds., Blind comparisons of shear wave velocities at closely spaced sites in San Jose, California: U.S. Geological Survey Open-File Report 2005-1169, p. 7
- Leucci, G., 2003, Evaluation of karst cave stability using integrated geophysical methods, GeoActa, 2, p. 75-88.
- Montane, J.M, and Whitman, D., 2000, Relationships between micro-topography and subsurface karst structures from airborne LIDAR and GPR data, in Abstracts with Programs, Geological Society of America, 32; 7, p. 515.
- Rivers, J.M., Nyquist, J.E., Roh, Y., Terry, D.O., Doll, W.E., 2004, Investigation into the origin of magnetic soils on the Oak Ridge Reservation, Tennessee, Soil Science Society of America Journal, 68;5, p. 1772-1779.
- Roth, M.J.S., Mackey, J.R., Mackey, C., and Nyquist, J.E., 2002, A case study of the reliability of multielectrode earth resistivity testing for geotechnical investigations in karst terrains, Engineering Geology, 65;2-3, p. 225-232.
- Rouse, K.J, Palmer, J.R., and Young, G., 2004, Multi-spectral image analysis as a guide to identifying potential soil-bedrock karst collapse hazards in urban settings, Farmington, Missouri, in Abstracts with Programs, Geological Society of America, 36; 3, p. 6.
- Rybakov, M., Rotsetin, Y., Shirman, B., and Al-Zoubi, A., 2005, Cave detection near the Dead Sea – a micro-magnetic feasibility study, The Leading Edge, p 585-590.
- Smith, B.D., Smith, D.V., Hill, P.L., and Labson, V.F., 2003, Helicopter Electromagnetic and Magnetic Survey Data and Maps, Seco Creek Area, Medina and Uvalde Counties, Texas: U.S. Geological Survey Open-File Report 03-0226, p. 12.
- Smith, B.D., Cain, M.J., Clark, A.K., Moore, D.W., Faith, J.R., and Hill, P.L., 2005, Helicopter Electromagnetic and Magnetic Survey Data and Maps, Northern Bexar County, Texas: U.S. Geological Survey Open-File Report 05-1158, p. 83.
- Smith, D.V., Smith, B.D., Hill, P.L., 2002, Aeromagnetic Survey of Medina and Uvalde Counties, Texas: A Web Site for Distribution of Data: U.S. Geological Survey Open-File Report 02-0049.
- Smith, D.V., and Pratt, D., 2003, Advanced Processing and Interpretation of the High-resolution aeromagnetic Survey data over the Central Edwards Aquifer, Texas, in Proceedings of the Society for the Application of Geophysics to Engineering and Environmental Problems, p. 11.
- Sumanovac, F., and Weisser, M., 2001, Evaluation of resistivity and seismic methods for hydrogeological mapping in karst terrains, Journal of Applied Geophysics, Vol. 47, No. 1.
- Tarhule, A., Dewers, T., Young, R., Witten, A., and Halian, T., 2003, Integrated subsurface imaging techniques for detecting cavities in the gypsum karst of Oklahoma, Oklahoma Geological Survey Circular, p. 77-84.
- Valla, P., and Legchenko, A., 2002, Surface nuclear magnetic resonance; what is possible?, Journal of Applied Geophysics, Vol. 50, No2. 1-2.
- Van Schoor, M., 2002, Detection of sinkholes using 2D electrical resistivity imaging, Journal of Applied Geophysics, V. 50, No. 4.
- Vichabian, Y., and Morgan, F.D., 2002, Self potentials in cave detection, The Leading Edge, 21:9, p. 866.
- Vouillamoz, J.M., Legchenko, A., et al., 2003, Localization of saturated karst aquifer with magnetic resonance sounding and resistivity imagery, Ground Water, 41:5, p. 578-586.

Williams, J.H., 2002, Borehole geophysics for contamination investigations in fractured sedimentary bedrock, in Abstracts with Programs, Geological Society of America, 34: 6, p. 228.

Xue, G., Song, J., and Xian, Y., 2004, Detecting shallow caverns in China using TEM, *The Leading Edge*, 23;7, p. 694-695.

Zhou, W., Beck, B.F., and Adams, A.L., 2002, Selection of an effective electrode array to map sinkholes in karst terranes using electrical resistivity tomography, in Abstracts with Programs, Geological society of America, 34:2, p. 16.

Review of Airborne Electromagnetic Geophysical Surveys over Karst Terrains

By Bruce D. Smith¹, Jeffery T. Gamey², Greg Hodges³

¹U.S. Geological Survey, MS 964, Box 25046, Denver Federal Center, Denver, CO 80225,

²Battelle, 105 Mitchell Rd, Suite 103, Oak Ridge, TN 37830

³Fugro Airborne, 2270 Argentia Road Mississauga (Toronto), Ontario

ABSTRACT

This paper describes airborne electromagnetic geophysical surveys that have been applied to geologic or hydrologic studies of karst terrain in the United States. These surveys have all used helicopter frequency domain electromagnetic (HEM) systems to map subsurface electrical conductivity (or equivalently its reciprocal, resistivity). The first published survey was at the Oak Ridge Reservation including the Oak Ridge National Laboratory (Tennessee) in 1993-1994 (Doll and others, 2000; Nyquist and Beard, 1999). The survey used a 6-frequency HEM system with three frequencies each for horizontal and vertical coplanar coil configurations. The frequency range was from approximately 850 to 36,000 Hz. This survey showed excellent examples of geophysical mapping of Permian limestone and dolomite lithologies, structure, and mapping of anomalous electrical conductivity highs associated with karst features. The karst features consisting of dolines, depressions, and disappearing streams, were postulated to be important controls for ground water flow paths and potential flow of contaminants.

The second survey was conducted in 1999 at Camp Crowder in Southeastern Missouri (Gamey and others, 2000). This HEM survey used five frequencies from approximately 400 to 102,000 Hz. This was an integrated study using photo-interpretation, ground and airborne electromagnetic (EM) surveys, seismic profiling, ground resistivity depth imaging surveys, and natural potential methods. Depth imaging methods for HEM data had progressed and at the time this survey was done, there was greater flexibility and resolution. The karstic bedrock produced similar types of electrical signatures as the survey at Oak Ridge. The interpreted resistivity depth sections from the HEM survey agreed well with other geophysical data and with the borehole data and provided significantly greater aerial coverage. An important characteristic of the geologic setting of Camp Crowder is the 5 to 50 meter thick McDowell Residuum that provides an important ground water storage and pathway to the karstic bedrock. The high frequency HEM apparent resistivity data maps the colluvium and residuum. The residuum thickness can be interpreted in detail from the HEM resistivity depth sections and shows subsurface bedrock topographic karstic features that are important in migration of shallow ground water. These near surface pathways interpreted from the HEM data help explain some of the complex results of tracer studies.

Based in part on the success of these surveys, a HEM survey was flown (2002) over the Seco Creek area in the Cretaceous Edwards Aquifer in Central Texas (Smith and others, 2003a,b). The HEM system used here was similar to that used at Camp Crowder with a frequency range from 400 to 115,000 Hz for horizontal co-planer coils. This survey successfully mapped structure, stratigraphy, and karst features within the recharge zone of exposed Edwards limestone, the artesian zone where the Edwards is buried by younger sediments, and the capture zone of older Glen Rose limestone. In this geologic setting the highest frequency is a direct reflection of bedrock geology because there is little development of a residuum or Quaternary alluvial deposits. The HEM data has mapped much more structure than the previously mapped geology confirming the importance of structural features in this karst setting. Computation of electrical

resistivity depth sections had progressed even from the time of the Camp Crowder survey. In addition the calibration and noise levels of the HEM system had improved. Different inversion schemes for the HEM data were evaluated to compute resistivity depth sections along flight lines (Smith and others, 2003a). Due to the improvements in the airborne geophysical system, the HEM data could be used in three-dimensional imaging of geology (Pantea and others, 2005) and karst features (Smith and others, 2004). A more recent survey in N. Bexar County of Texas (Smith and others 2005) has demonstrated applications to mapping karst features in the Glen Rose Limestones of the Trinity Aquifer.

The final example of mapping karst features is from a survey in the Canada over Silurian limestones (Hodges, 2004). The objective of this survey was to map the thickness of glacial overburden in the area of a known sinkhole in order to determine if other significant sinkholes existed in the area. These survey data were used to develop and refine automatic inversion of the HEM data to interpret overburden depth maps. In particular, seismic lines and drill hole data was used to constrain starting models. Seismic data was used to map the depth of overburden in the sinkhole because the 150-meter thickness of the conductive overburden was too great to be resolved by the HEM data. However, elsewhere, the constrained inversion provided realistic depth estimates for the overburden. A paleo-channel was mapped in one corner of the survey area but no other major sinkholes were found.

Helicopter electromagnetic surveys have proven to be cost effective and efficient in mapping large areas of karstic terrain that often are inaccessible. Though the surveys have not identified specific cave systems or other voids, they have identified structure, stratigraphy, and other features such as dolines that can be important in the control of groundwater flow paths.

SELECTED REFERENCES

- Doll, W.E., Nyquist, J.E., Beard, L.P., and Gamey, T.J., 2000, Airborne Geophysical Surveying for Hazardous Waste Site Characterization on the Oak Ridge Reservation, Tennessee: *Geophysics*, vol. 65, no. 5., p 1372-1387.
- Nyquist J.E. and Beard, L.P., 1999, Clean Enough for Industry? An Airborne Geophysical Case Study: Symposium on the Application of Geophysics to Environmental and Engineering Problems.
- Gamey, T.J., Thompson, M., Mandell, W., Frano, G., Miller, S., 2000, Karst Pathway Delineation using Combined Spatial and Geophysical Analysis at Camp Crowder, Missouri,: Symposium on the Application of Geophysics to Environmental and Engineering Problems 12 p.
- Hodges, G., 2004, Practical Inversions for Helicopter Electromagnetic Data: Airborne Geophysical Methods Workshop, Symposium on the Application of Geophysics to Environmental and Engineering Problems, p. 45 - 58.
- Pantea, M.P., Cole, J.C., Smith, B.D., and Deszcz-Pan, M., 2005, Structural and stratigraphic 3-D modeling of the Edwards Aquifer, Medina County, Texas, using helicopter EM survey data to evaluate and extrapolate geologic mapping and drillhole data, these proceedings.
- Smith, B.D., Irvine, R., Blome, C.D., Clark, A.K., and Smith, D.V., 2003a, Preliminary Results, Helicopter Electromagnetic and Magnetic Survey of the Seco Creek Area, Medina and Uvalde Counties, Texas: Proceedings for the Symposium on the Application of Geophysics to Environmental and Engineering Problems, San Antonio, Texas, 15 p.
- Smith, B.D., Smith, D.V., Hill, P.L., and Labson, V.F., 2003b, Helicopter electromagnetic and magnetic survey data and maps, Seco Creek Area, Medina and Uvalde counties, Texas: U.S. Geological Survey Open-File Report 03-226, 43 p.

Smith, B.D. Cain, M.J., Clark, A.K., Moore, D.W., Faith, J. R., and Hill, P. L., 2005, Helicopter Electromagnetic and Magnetic Survey Data and Maps, Northern Bexar County, Texas: U.S. Geological Survey Open-File Report 05-1158, 83 p.

Overview of Karst Effects and Karst Detection in Seismic Data from the Oak Ridge Reservation, Tennessee

W. E. Doll¹, B. J. Carr², J. R. Sheehan¹ and W. A. Mandell³

¹Battelle, 105 Mitchell Rd., Suite 103, Oak Ridge, TN 37830

²Geophex, 605 Mercury Street, Raleigh, NC 27603

³U.S. Army Environmental Center, 5179 Hoadley Rd, Aberdeen, MD 21010

ABSTRACT

The Oak Ridge Reservation (ORR), Tennessee has an abundance of karst features, including sinkholes, voids, and epikarstal features. In addition to non-seismic investigations, several seismic surveys, primarily seismic reflection and refraction, were conducted on the ORR between 1992 and 2005. In some cases, karst was the target of the seismic investigations, but in others, karst had detrimental effects on data acquired for other applications. In this paper, we summarize the results of these surveys as well as the modeling that we conducted to understand these results, and present our observations on the strengths and limitations of seismic methods for karst investigations.

OAK RIDGE RESERVATION KARST

The Oak Ridge Reservation (ORR), Tennessee has an abundance of karst features, including sinkholes, voids, and epikarstal features (Figure 1). These features are of concern in that they can critically impact the offsite migration of contaminants. As an example, groundwater

monitoring well GW-734, drilled near the Y-12 Plant on the ORR intercepted a mud-filled void in 1992, and a number of geophysical surveys were subsequently conducted to assess the karst feature at this site (Doll et al., 1999; Carpenter et al., 1998). In addition to several non-seismic investigations, many seismic surveys, primarily

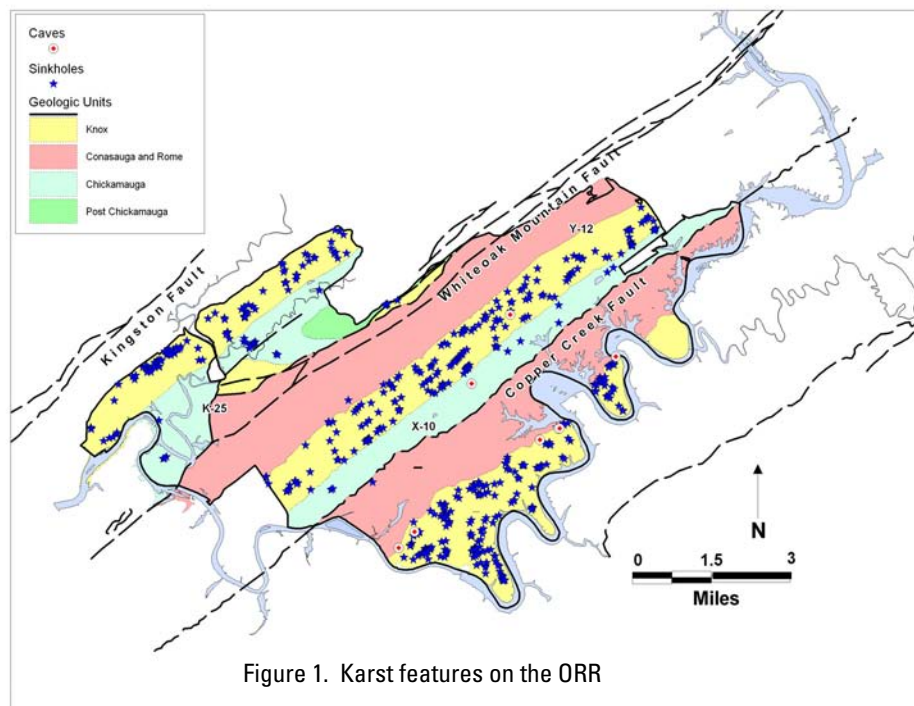


Figure 1. Karst features on the ORR

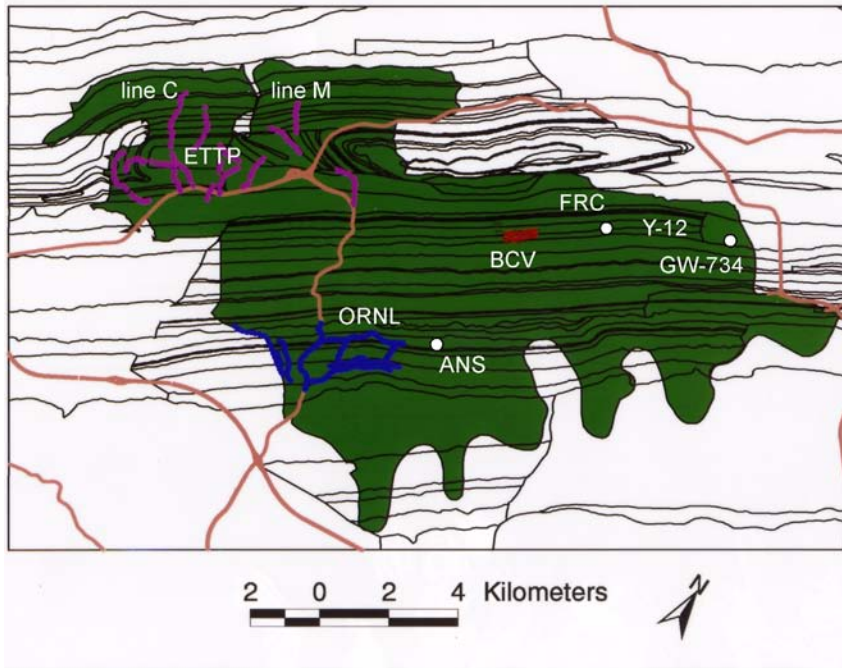


Figure 2. Locations of seismic reflection and refraction lines on the ORR.

seismic reflection and refraction, were conducted on the ORR between 1991 and 2005 (Figure 2). Seismic refraction surveys were conducted for depth to bedrock measurements (e.g. at the proposed Advanced Neutron Source ANS site, Nyquist et al., 1996), and sinkhole imaging. Seismic reflection surveys were conducted primarily for mapping structures that control contaminant transport in the vicinity of high-level waste sites (e.g. Doll et al.,

1998; Doll, 1998; Carr et al., 1997; Liu and Doll, 1997). The results were used for selection of groundwater monitoring well locations. In some cases (e.g. Doll et al., 1999; Carpenter et al., 1998; Sheehan et al., 2005), karst was the target of the seismic investigations, but in the seismic reflection studies and many of the refraction studies, karst had detrimental effects on data acquired for other applications.

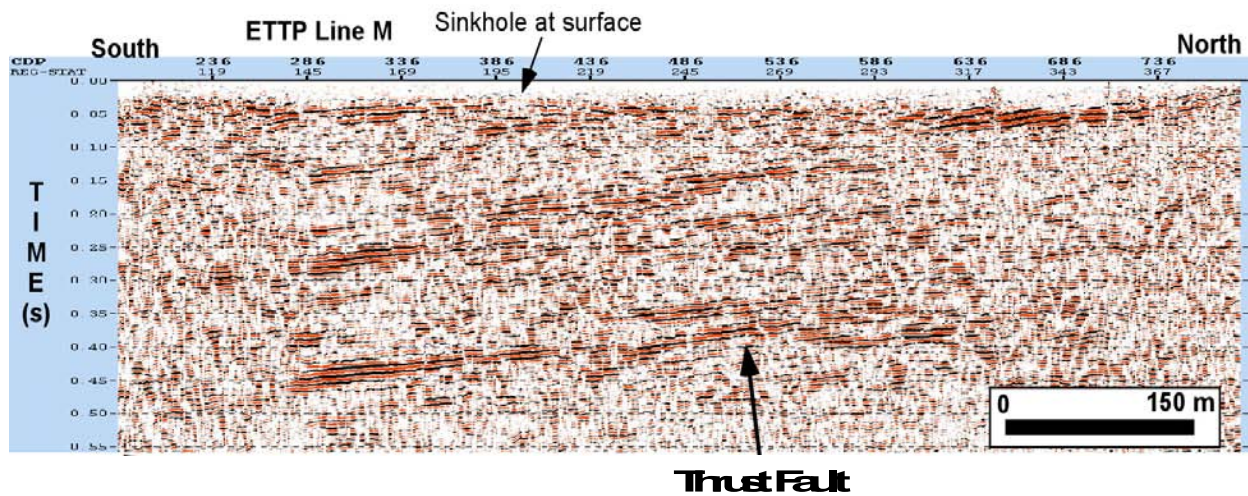


Figure 3. Karst effects in seismic reflection stacked section, Line M, ETPP data group, ORR.

KARST IN SEISMIC REFLECTION DATA

Seismic reflection data can yield indicators of karst, but infrequently provides a satisfactory degree of imaging. Figure 3 shows a portion of ETPP seismic reflection line M, a north-south line which is oriented perpendicular to strike from the northern portion of the ORR. The data were acquired with an IVI Minivib source, sweeping 20-200 Hz with 96 recording channels for a 0.55s section, as described in Liu et al., 1997. A known sinkhole causes disruption of shallow reflections, as shown. Other disruptions of shallow reflections may be associated with sinkholes that are presently unknown. At other sites, shallow karst completely obliterates deeper reflections. At the Bear Creek Burial Grounds (Figure 4; Doll, 1998), data were acquired along two south-dipping strike-parallel lines using the KGS Auger-gun 8-gauge source and 48 receiving channels. The data in the northern line (BCV Line 1) were acquired

in the Nolichucky Formation, an interbedded shale and limestone unit that is not prone to karstification. The southern line (BCV Line 3) occurs in the Maynardville Formation, a limestone unit that is frequently karst-bearing on the ORR. The stacked section for Line 1 (figure 5) is a very nice image of the underlying structure of the site. On Line 3a (Figure 6), only a few reflections can be recognized in a largely diffuse image. Seismic Lines 3b and 3c do not display any reflections. Thus the shallow karst on Line 3 prevents acquisition of useable reflection data. In none of the stacked sections described above is it possible to determine the size or shape of the karst features or to even state conclusively that karst is responsible for the absence of reflections. Other authors have reported downward deflection of reflections, weak amplitudes or lack of laterally coherent reflections as indicators of karst (e.g. Branham and Steeples, 1988; Steeples and Miller, 1987).

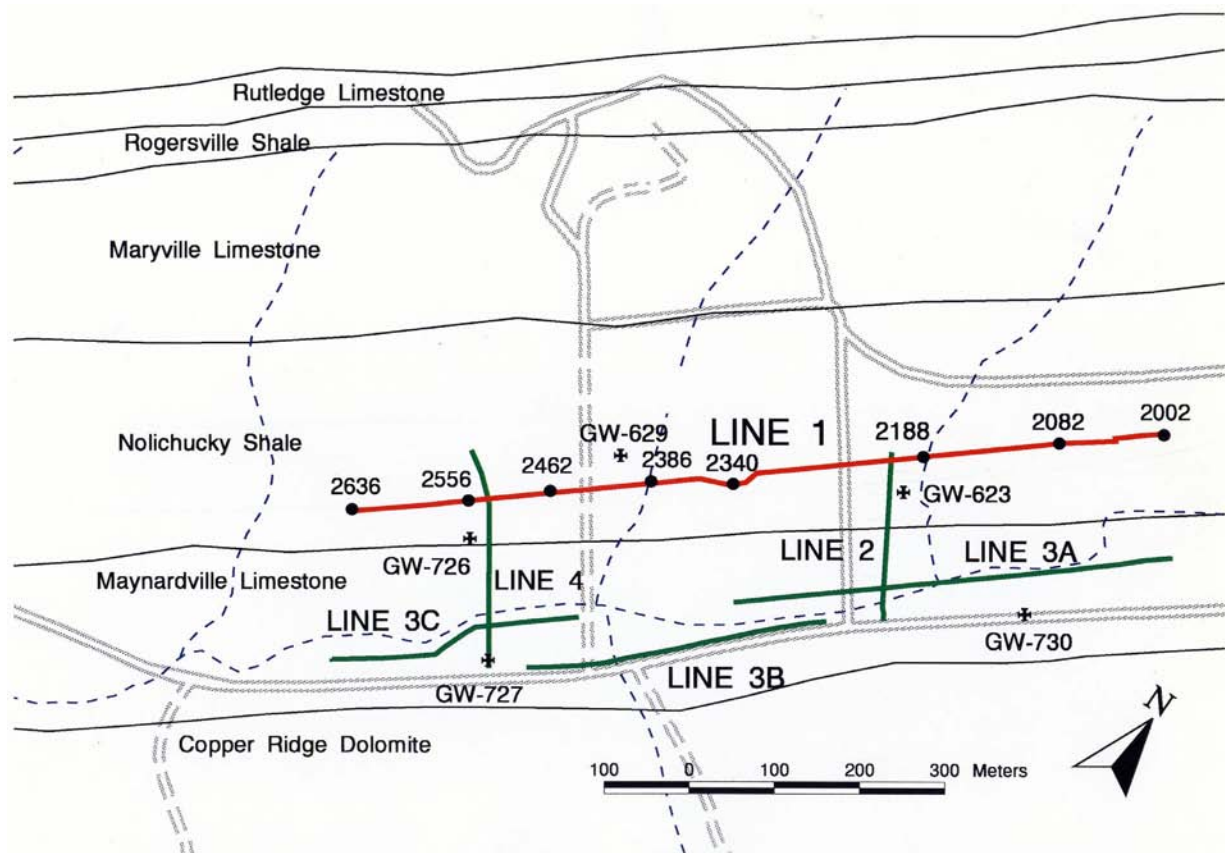


Figure 4. Map view of the lines that comprise the Bear Creek Valley data group

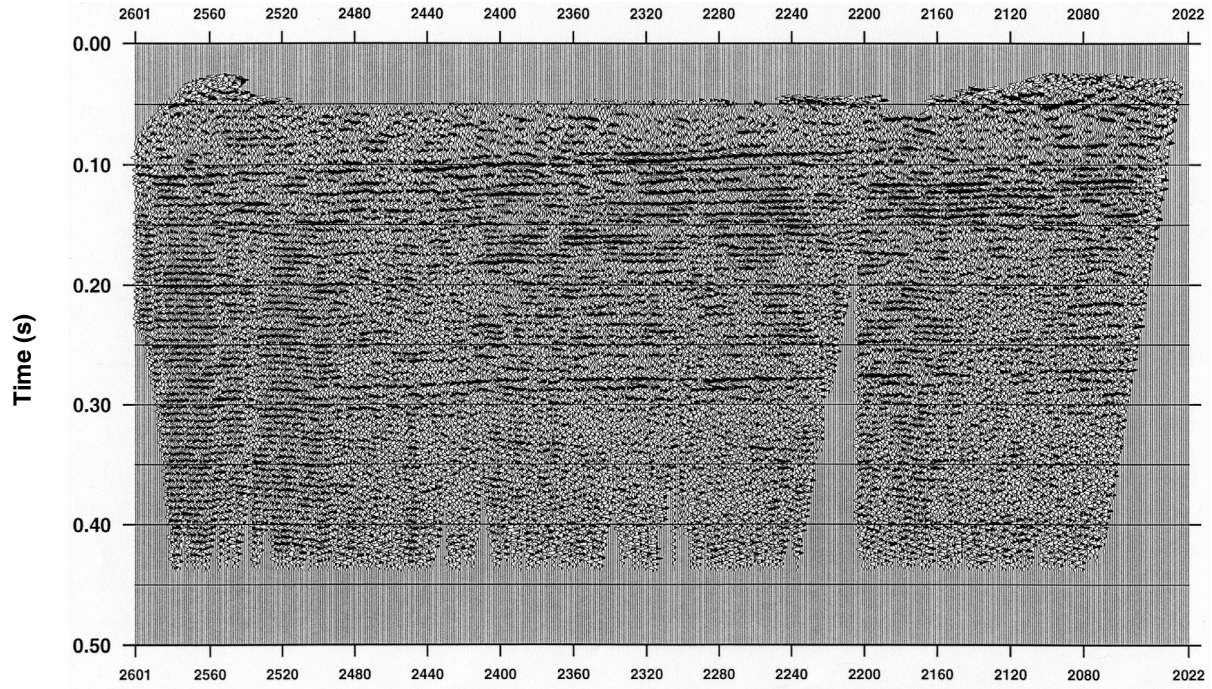


Figure 5. Coherent reflections from stacked seismic reflection section collected over thick shale unit.

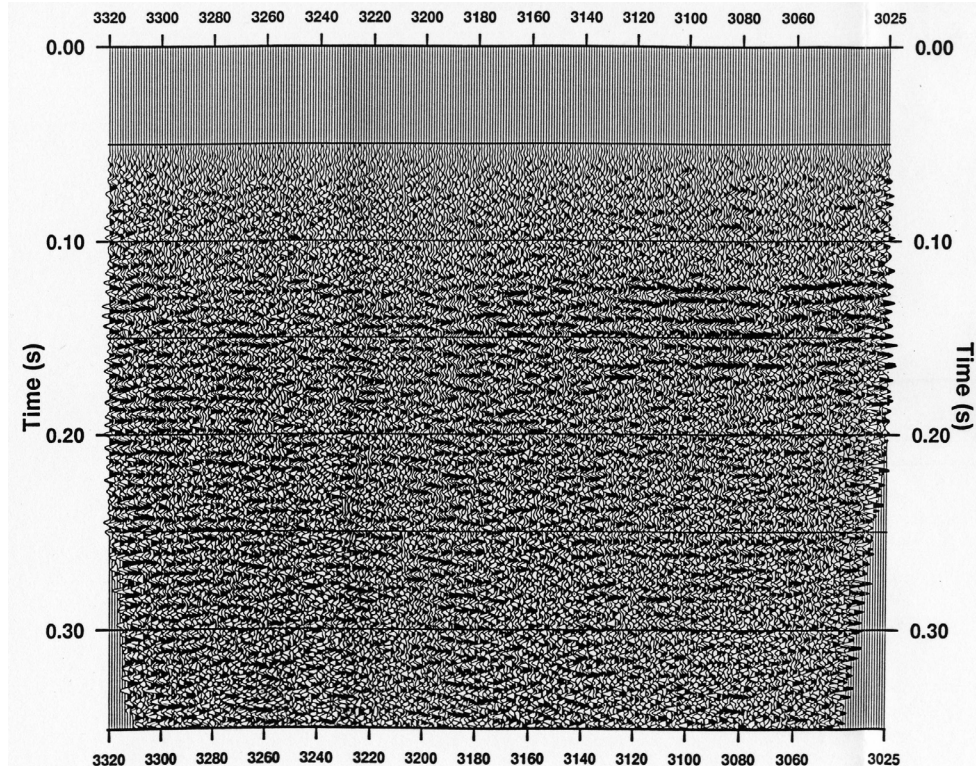


Figure 6. Stacked section from BCV seismic reflection Line 3A, collected over highly karstified limestone unit. Few coherent reflections appear.

Karst Effects on Shot Gathers in Seismic Reflection Data

Many of the effects of karst are likely to be eliminated through the stacking of CDP gathers in seismic reflection processing. It is therefore appropriate to inspect data at a more fundamental level to assess karst effects. Primary indicators are diffractions; attenuated, absent or discontinuous reflections; or variations in shot gathers that prevent stacking of reflections. We have observed amplitude reductions as well as diffraction hyperbolae in shot gathers where karst is known to occur. Figure 7 shows these effects for three shot gathers acquired with the IVI Minivib on ETP Line C. Each of these shot gathers had first arrivals picked and refraction static corrections applied to eliminate effects due to surface elevation changes.

In addition to the receiver effects shown in Figure 7, we also note that frequency attenuation occurs when the source is placed directly over the karst feature. Figure 8 shows this effect, using data from ETP Line M. Shot 88 is fired 3m south of the exposed collapse structure (Fig. 8a). The dominant frequency of the direct arrivals is 120 Hz, and the amplitudes do not exhibit severe phase rotations across the shot. In the subsequent shot, Shot 89 (Fig. 8b), acquired 3m from Shot 88 and less than 1m north of the exposed sinkhole, the amplitude and phase characteristics are disturbed, and the dominant frequency falls to 80 Hz.

Models of Karst in Reflection Data

We have developed a series of finite difference models to obtain a better understanding of karst effects in shallow seismic reflection data. These results are incorporated into a paper (Carr et al., in preparation) that provides greater detail. In general, the results validate the observations that we have presented above from field measurements. In general, air-filled karst attenuates the most energy, produces the largest diffractions, and interferes most with first arrivals and subsequent reflections. Water- and soil-filled voids produce these effects to a lesser degree, but also produce large amplitude multiples.

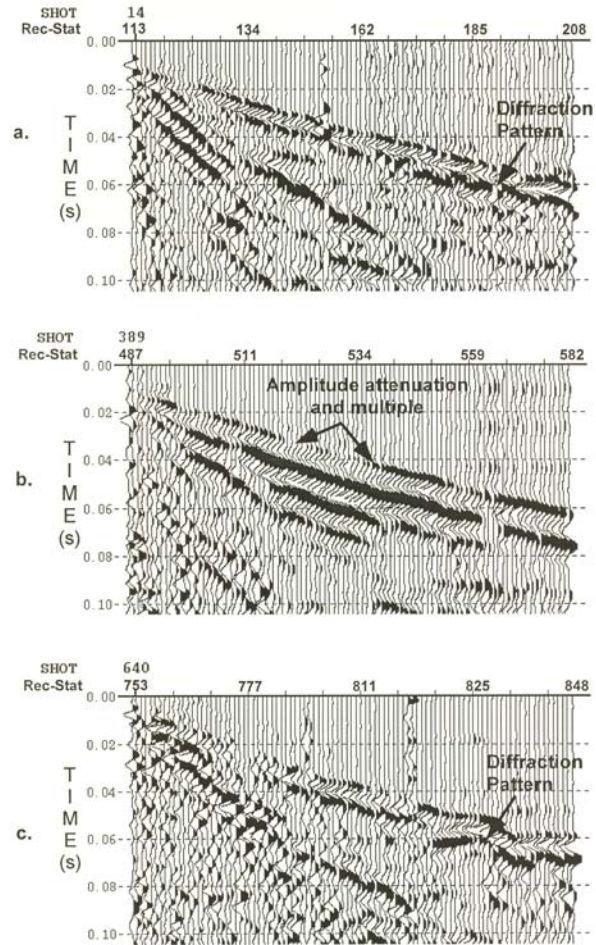


Figure 7. Karst effects in shot gathers from ETP Line C

Summary of Reflection Methods for Karst Imaging

These results demonstrate the difficulty of imaging karst with seismic reflection methods. The assumptions that are inherent in seismic reflection analysis are in conflict with attributes of karst structures, such as steeply dipping boundaries, rough interfaces, and laterally discontinuous interfaces. In addition, the dimensions of typical karst features can be near to, or less than the wavelength of the seismic waves that are often used in an attempt to image them. This makes it more likely that the seismic energy will be scattered than reflected. In addition, surface waves, refracted waves, and other forms of source-generated interference make it very difficult to enhance reflections shallower than about 50 ms, and this is often the portion of the record that is critical for karst sites.

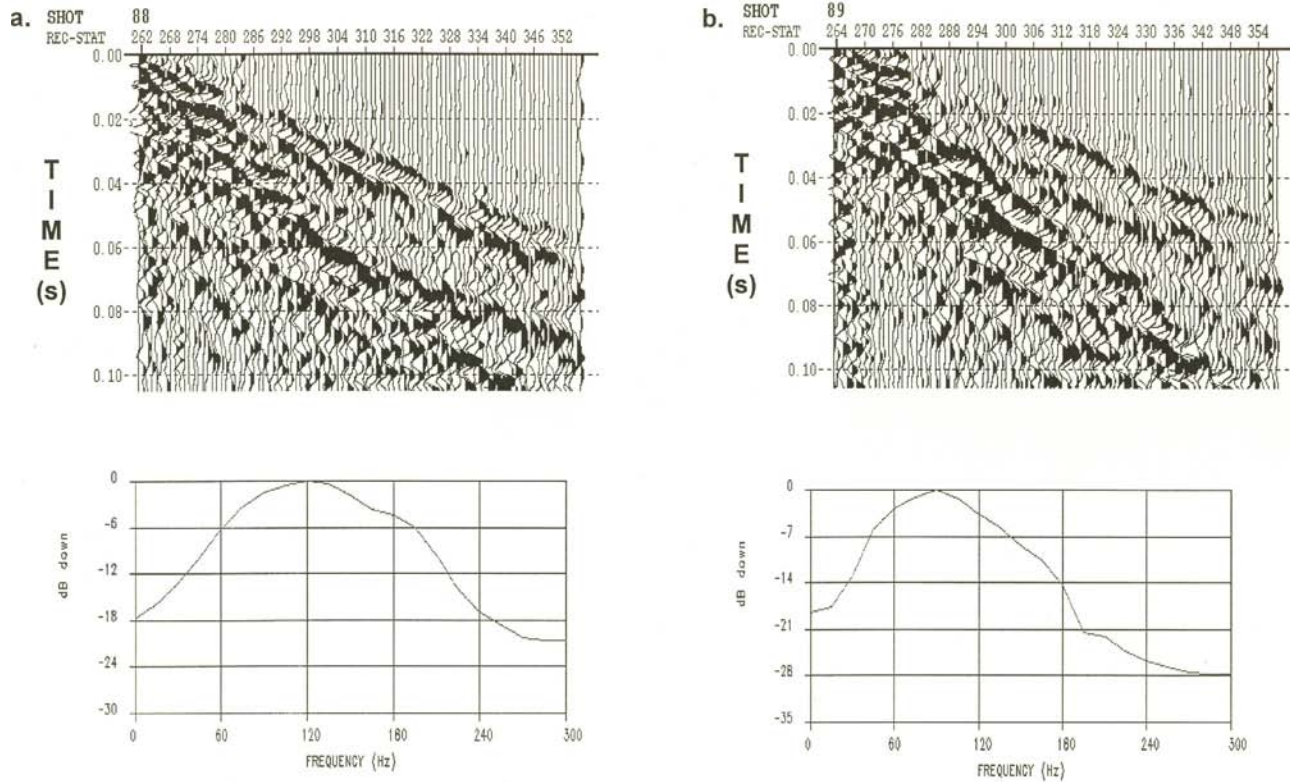


Figure 8. Frequency attenuation in shot gathers where the source is above a karst feature

SEISMIC REFRACTION AT KARST SITES

Seismic refraction methods have been used on the ORR and elsewhere to determine depth to bedrock, and other structures related to karst terrains. It is appropriate for mapping soil-filled sinkholes, where these occur as a shallow low velocity soil or soil/rock unit subtended by a higher velocity consolidated layer (presumably carbonates). As carbonates tend to have high velocities, these contacts are good refraction candidates, even when moderately weathered. Deeper karst, however, is more problematic for conventional delay-time or generalized reciprocal methods for refraction analysis. Air-, mud- or water-filled voids are manifested as low-velocity zones, and these methods assume constant velocity, or constant gradient layers. These assumptions are incompatible with the three-dimensional heterogeneity that is dominant at karst sites. As a result, conventional seismic refraction methods often yield indicators of karst such as an apparent thickening of layers above karst voids. Seismic refraction analysis

methods that allow basement velocity to vary beneath a constant velocity upper layer (such as the refraction statics routines in seismic reflection software packages) can also yield artificially low basement velocities beneath the void. These results show that seismic refraction data can respond to voids, but conventional methods or data sets have inherent weaknesses that preclude proper imaging.

To demonstrate this effect, we show results from data acquired above a known karst feature at the Y-12 site, at well GW-734. The mud-filled void at this site was encountered during installation of a monitoring well with the top of the void at 18m and at least 12m of vertical extent. More details on the site are available in Carpenter et al., 1998 and Doll et al., 1999.

Conventional delay-time analysis of a seismic refraction line at the site yields the result shown in Figure 9. This result provides no indication that a karst feature might occur at this site.

A more suitable approach is provided within seismic reflection software in a module that corrects for near-surface time delays that influence underlying reflection travel times. This near surface time correction is known as a static correction. Tomographic seismic refraction statics routines in the FOCUS software package allow bedrock velocity to vary while assuming that the surface layer velocity remains constant. In practice, of course, the soil layer velocity will not be constant, but the allowance for a varying bedrock velocity is an improvement over constant velocity assumptions. When applied to the data from GW-734, we observe two effects (Figures 10 and 11). A profile of the depth to bedrock (Fig.10) shows a depressed bedrock surface at the location of the void. The calculated bedrock

velocity (Fig. 11) is lower in the area of the void than in adjacent areas.

The FOCUS refraction statics results require more shots across the geophone spread than does the conventional delay-time result. On the other hand, they provide strong indicators of the presence of karst that cannot be derived from the delay-time analysis. Both methods rely only on the travel times of first-arrivals, whereas the seismic reflection results are concerned with more of the waveform. Most importantly, the FOCUS results demonstrate that analysis of seismic first arrivals is sensitive to the presence of karst, even though the restrictions of both techniques described here are inappropriate for karst terrains.

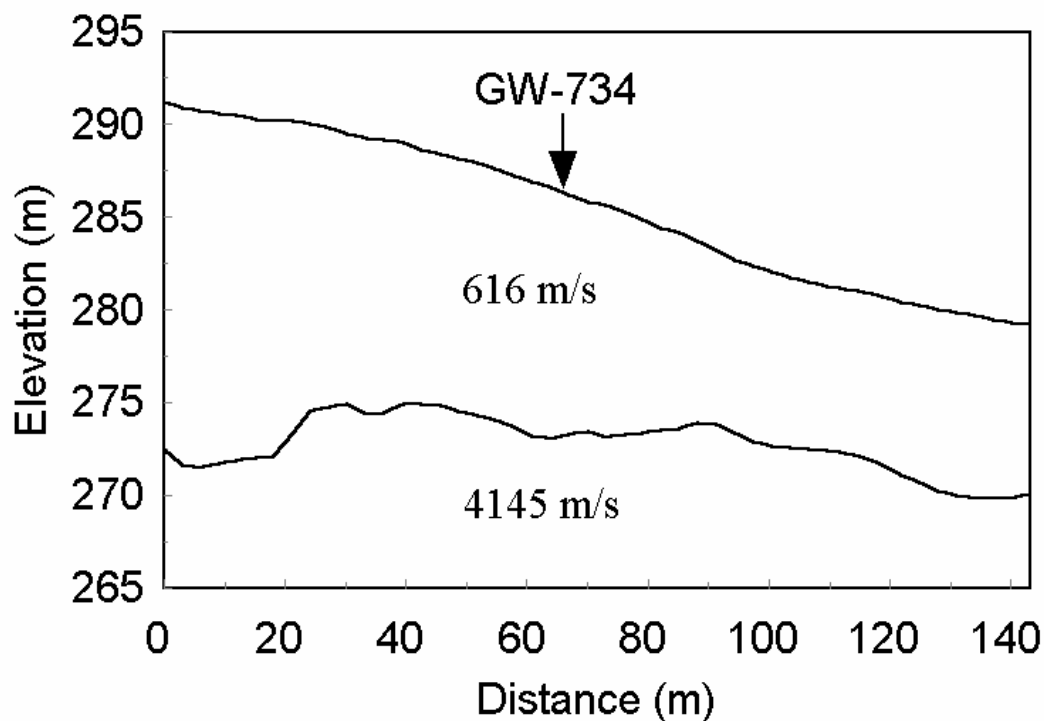


Figure 9. Delay-time result for first arrival analysis at well GW-734.

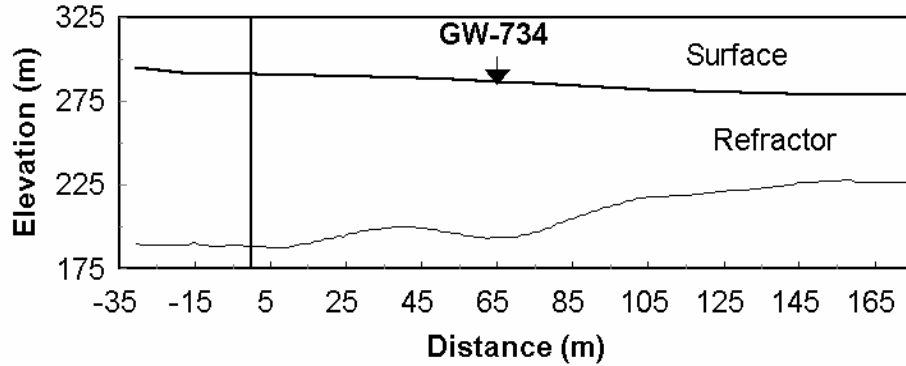


Figure 10. Bedrock surface, as determined with FOCUS refraction statics

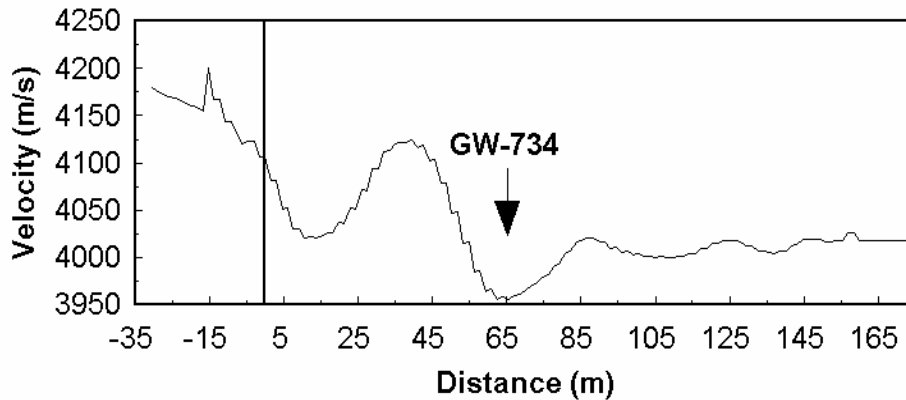


Figure 11. Bedrock velocity as produced by the FOCUS tomographic refraction statics module.

More recently, we have directed our effort toward application of tomographic refraction analysis methods, which have fewer restrictions, and appear to be more effective than the methods described in this paper. Results from this effort are described in a subsequent paper in this volume (Sheehan et al., this volume) and will not be duplicated here.

CONCLUSIONS

Based on analysis of extensive seismic data acquired on the ORR over a period of more than a decade, we can reach some general conclusions about karst effects in seismic data at this location. Karst can significantly influence the quality of stacked seismic reflection profiles, and can create artifacts in the stacked profiles as well as shot gathers that indicate the presence of karst. These effects

are neither consistent nor unique to karst, so seismic reflection profiling is a poor choice for imaging or unambiguously locating karst-related structures.

The conventional delay-time or similar procedures for analyzing seismic refraction data have inherent assumptions about the nature of the seismic velocity structure that conflict with the typical structures at karst sites. As a result, they produce artifacts that are caused by the karst but do not accurately represent the structure of the karst features. Tomographic static routines in seismic reflection software packages provide stronger indications of the karst features, but are still too restrictive for proper structural representation of karst. Based on these results, we believe that seismic refraction tomography with fewer constraints on the seismic velocity structure are more effective in imaging karst than conventional seismic reflection and refraction.

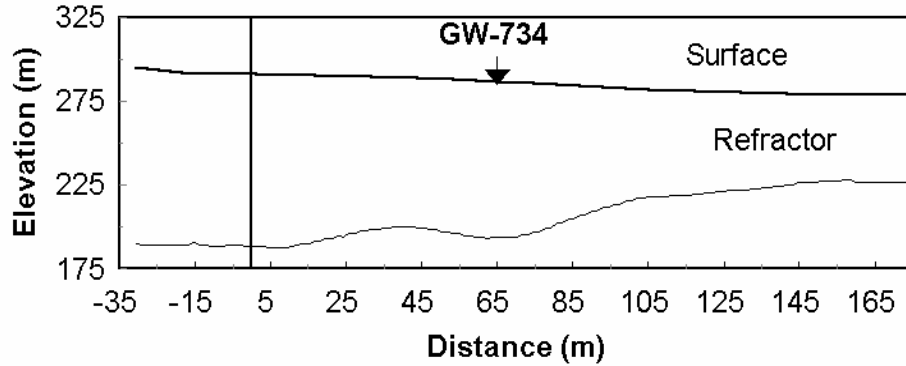


Figure 10. Bedrock surface, as determined with FOCUS refraction statics

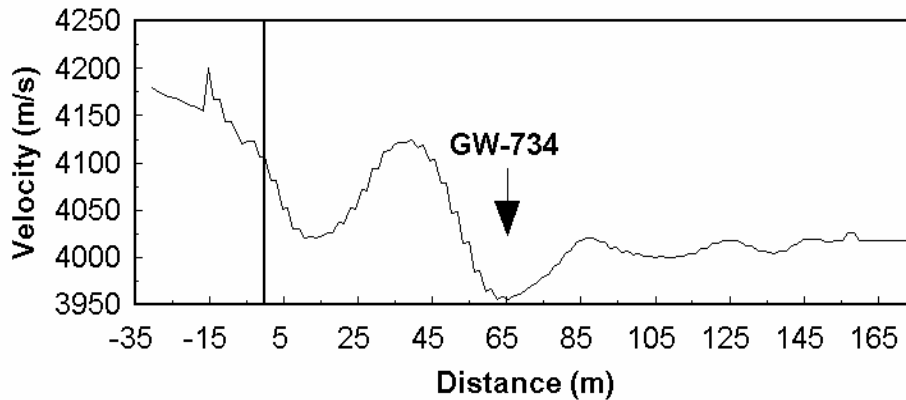


Figure 11. Bedrock velocity as produced by the FOCUS tomographic refraction statics module.

More recently, we have directed our effort toward application of tomographic refraction analysis methods, which have fewer restrictions, and appear to be more effective than the methods described in this paper. Results from this effort are described in a subsequent paper in this volume (Sheehan et al., this volume) and will not be duplicated here.

CONCLUSIONS

Based on analysis of extensive seismic data acquired on the ORR over a period of more than a decade, we can reach some general conclusions about karst effects in seismic data at this location. Karst can significantly influence the quality of stacked seismic reflection profiles, and can create artifacts in the stacked profiles as well as shot gathers that indicate the presence of karst. These effects

are neither consistent nor unique to karst, so seismic reflection profiling is a poor choice for imaging or unambiguously locating karst-related structures.

The conventional delay-time or similar procedures for analyzing seismic refraction data have inherent assumptions about the nature of the seismic velocity structure that conflict with the typical structures at karst sites. As a result, they produce artifacts that are caused by the karst but do not accurately represent the structure of the karst features. Tomographic static routines in seismic reflection software packages provide stronger indications of the karst features, but are still too restrictive for proper structural representation of karst. Based on these results, we believe that seismic refraction tomography with fewer constraints on the seismic velocity structure are more effective in imaging karst than conventional seismic reflection and refraction.

Here, we have dealt exclusively with methods that involve primary body waves (P-waves) in this analysis. We have not discussed shear wave methods, or surface wave approaches such as multi-channel analysis of surface waves (Park et al., 1999), that may also be suitable to karst sites. We have had mixed success with these methods on the ORR, and believe that they merit further study.

ACKNOWLEDGEMENTS

We thank Rick Miller and the Kansas Geological Survey for acquiring the seismic reflection data that we subsequently processed and discuss in this paper. We thank David Watson (ORNL) for providing the karst map in Figure 1.

REFERENCES

- Branham, K. L., and D. W. Steeples, 1998, Cavity detection using high-resolution seismic reflection methods. *Mining Engineering*, 115-119.
- Carpenter, P. J., W. E. Doll, and R. D. Kaufmann, 1998, Geophysical character of buried sinkholes on the Oak Ridge Reservation, Tennessee, , *Jour. Environmental and Engineering Geophysics*, v. 3, p. 133-146.
- Carr, B. J., W. E. Doll, and R. D. Miller, 1997, Near-surface seismic imaging and reflectivity studies of the Melton Valley waste areas, Oak Ridge Reservation, , *Expanded Abstracts, 1997 Soc. Expl. Geophy. Annual Meeting*, p. 772-775.
- Carr, B. J., W. E. Doll, and R. Bainer, in preparation, Seismic detection of shallow karst on the Oak Ridge Reservation.
- Doll, W. E., R. D. Miller, and J. Xia, 1998, A non-invasive shallow seismic source comparison on the Oak Ridge Reservation, Tennessee *Geophysics*, v. 63, n. 4, p. 1318-1331.
- Doll, W. E., Reprocessing of shallow seismic reflection data to image faults near a hazardous waste site on the Oak Ridge Reservation, Tennessee, *Proceedings of the 1998 Symposium on the Application of Geophysics to Engineering and Environmental Problems*, March 22-26, 1998, Chicago, IL, p. 705-714.
- Doll, W. E., J. E. Nyquist, P. J. Carpenter, R. D. Kaufmann, and B. J. Carr, 1999, Geophysical surveys of a known karst feature: Oak Ridge Y-12 Plant, Oak Ridge, Tennessee, in *Geo-engineering for underground facilities*, ASCE Geotechnical Special Publication No. 90, G. Fernandez and R. Bauer, ed., p. 684-694.
- Liu, Z. and W. E. Doll, 1997, Seismic reflection processing for characterization of a hazardous waste site, *Proceedings of the 1997 Symposium on the Application of Geophysics to Engineering and Environmental Problems*, p. 291-299.
- Nyquist, J.E., W.E. Doll, R.K. Davis, and R.A. Hopkins, 1996, Cokriging surface topography and seismic refraction data for bedrock topography, *Jour. Environmental and Engineering Geophysics*, v. 1, n. 1, p. 67-74.
- Park, C.B., R.D. Miller, and J. Xia, 1999 Multichannel analysis of surface waves, *Geophysics*, 64, 800-808
- Sheehan, J. R., W. E. Doll, D. B. Watson, and W. A. Mandell, *this volume*, Detecting cavities with seismic refraction tomography, 12pp.
- Sheehan, J. R., W. E. Doll, D. B. Watson, and W. A. Mandell, 2005, Detecting cavities with seismic refraction tomography: Can it be done?, *Proceedings of the 2005 Symposium on the Application of Geophysics to Engineering and Environmental Problems*, p. 989-1003.
- Steeple, D. W., and R. D. Miller, 1987, Direct detection of shallow subsurface voids using high-resolution seismic-reflection techniques; in Beck, B. F. Wilson, W. L., and Balkema, A. A., Eds., *Karst Hydrogeology; Engineering and Environmental Applications*, 179-183.

Here, we have dealt exclusively with methods that involve primary body waves (P-waves) in this analysis. We have not discussed shear wave methods, or surface wave approaches such as multi-channel analysis of surface waves (Park et al., 1999), that may also be suitable to karst sites. We have had mixed success with these methods on the ORR, and believe that they merit further study.

ACKNOWLEDGEMENTS

We thank Rick Miller and the Kansas Geological Survey for acquiring the seismic reflection data that we subsequently processed and discuss in this paper. We thank David Watson (ORNL) for providing the karst map in Figure 1.

REFERENCES

- Branham, K. L., and D. W. Steeples, 1998, Cavity detection using high-resolution seismic reflection methods. *Mining Engineering*, 115-119.
- Carpenter, P. J., W. E. Doll, and R. D. Kaufmann, 1998, Geophysical character of buried sinkholes on the Oak Ridge Reservation, Tennessee, , *Jour. Environmental and Engineering Geophysics*, v. 3, p. 133-146.
- Carr, B. J., W. E. Doll, and R. D. Miller, 1997, Near-surface seismic imaging and reflectivity studies of the Melton Valley waste areas, Oak Ridge Reservation, , *Expanded Abstracts, 1997 Soc. Expl. Geophy. Annual Meeting*, p. 772-775.
- Carr, B. J., W. E. Doll, and R. Bainer, in preparation, Seismic detection of shallow karst on the Oak Ridge Reservation.
- Doll, W. E., R. D. Miller, and J. Xia, 1998, A non-invasive shallow seismic source comparison on the Oak Ridge Reservation, Tennessee *Geophysics*, v. 63, n. 4, p. 1318-1331.
- Doll, W. E., Reprocessing of shallow seismic reflection data to image faults near a hazardous waste site on the Oak Ridge Reservation, Tennessee, *Proceedings of the 1998 Symposium on the Application of Geophysics to Engineering and Environmental Problems*, March 22-26, 1998, Chicago, IL, p. 705-714.
- Doll, W. E., J. E. Nyquist, P. J. Carpenter, R. D. Kaufmann, and B. J. Carr, 1999, Geophysical surveys of a known karst feature: Oak Ridge Y-12 Plant, Oak Ridge, Tennessee, in *Geo-engineering for underground facilities*, ASCE Geotechnical Special Publication No. 90, G. Fernandez and R. Bauer, ed., p. 684-694.
- Liu, Z. and W. E. Doll, 1997, Seismic reflection processing for characterization of a hazardous waste site, *Proceedings of the 1997 Symposium on the Application of Geophysics to Engineering and Environmental Problems*, p. 291-299.
- Nyquist, J.E., W.E. Doll, R.K. Davis, and R.A. Hopkins, 1996, Cokriging surface topography and seismic refraction data for bedrock topography, *Jour. Environmental and Engineering Geophysics*, v. 1, n. 1, p. 67-74.
- Park, C.B., R.D. Miller, and J. Xia, 1999 Multichannel analysis of surface waves, *Geophysics*, 64, 800-808
- Sheehan, J. R., W. E. Doll, D. B. Watson, and W. A. Mandell, *this volume*, Detecting cavities with seismic refraction tomography, 12pp.
- Sheehan, J. R., W. E. Doll, D. B. Watson, and W. A. Mandell, 2005, Detecting cavities with seismic refraction tomography: Can it be done?, *Proceedings of the 2005 Symposium on the Application of Geophysics to Engineering and Environmental Problems*, p. 989-1003.
- Steeple, D. W., and R. D. Miller, 1987, Direct detection of shallow subsurface voids using high-resolution seismic-reflection techniques; in Beck, B. F. Wilson, W. L., and Balkema, A. A., Eds., *Karst Hydrogeology; Engineering and Environmental Applications*, 179-183.