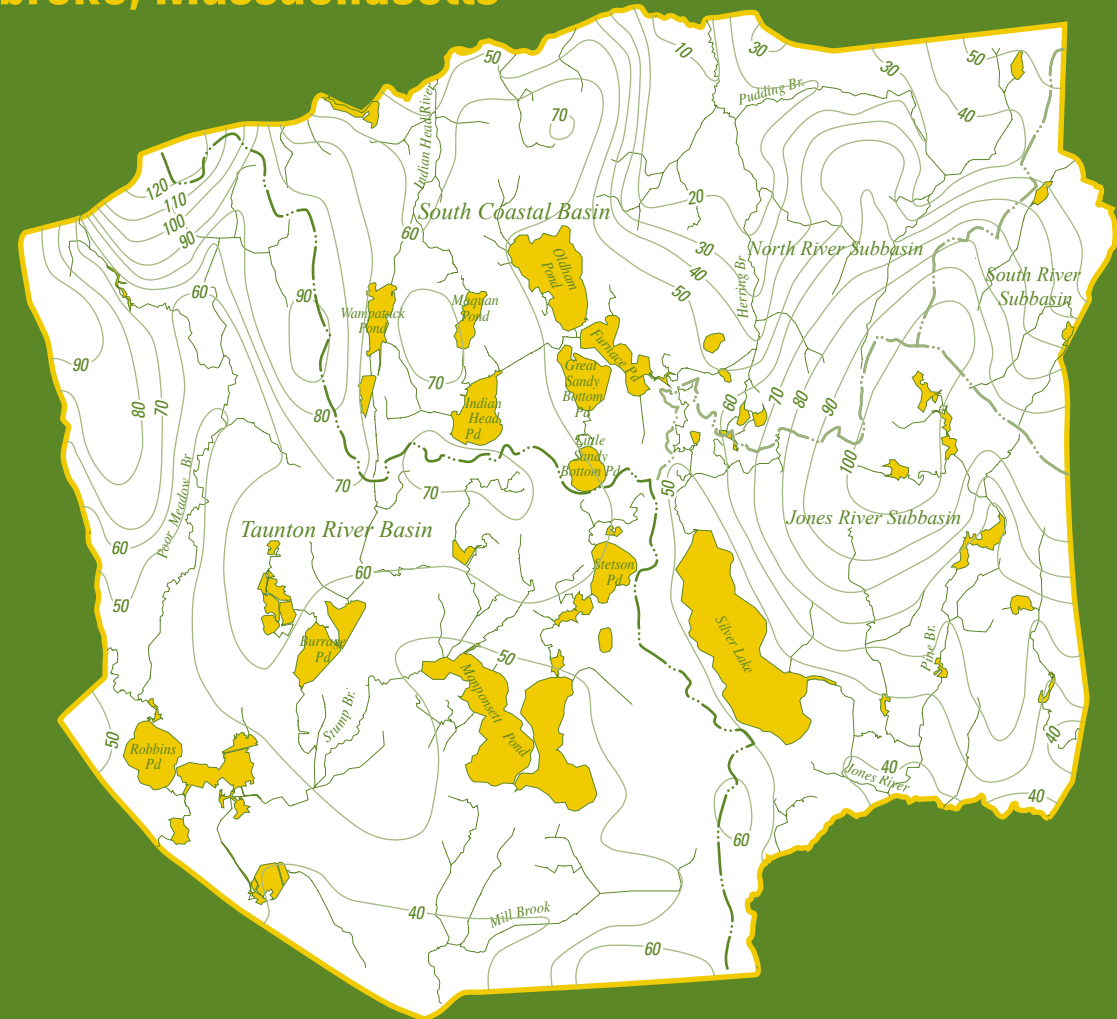




In cooperation with the
 Drinking Water Program, Massachusetts Department of
 Environmental Protection

Simulated Ground-Water Flow for a Pond-Dominated Aquifer System near Great Sandy Bottom Pond, Pembroke, Massachusetts



Carlson and Lyford—Simulated Ground-Water Flow for a Pond-Dominated Aquifer System near
 Great Sandy Bottom Pond, Pembroke, Massachusetts—SIR 2004-5269

Scientific Investigations Report 2004-5269

U.S. Department of the Interior
 U.S. Geological Survey



1879–2004