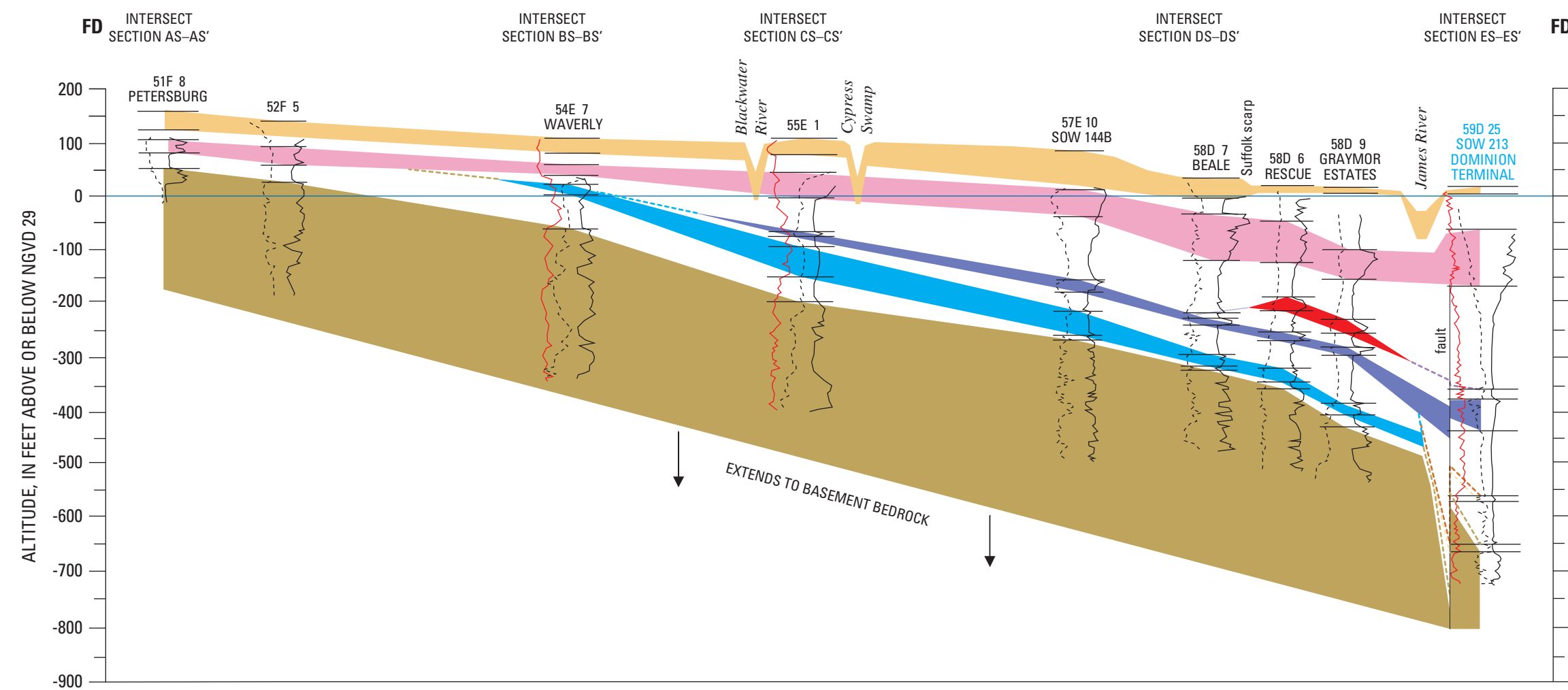
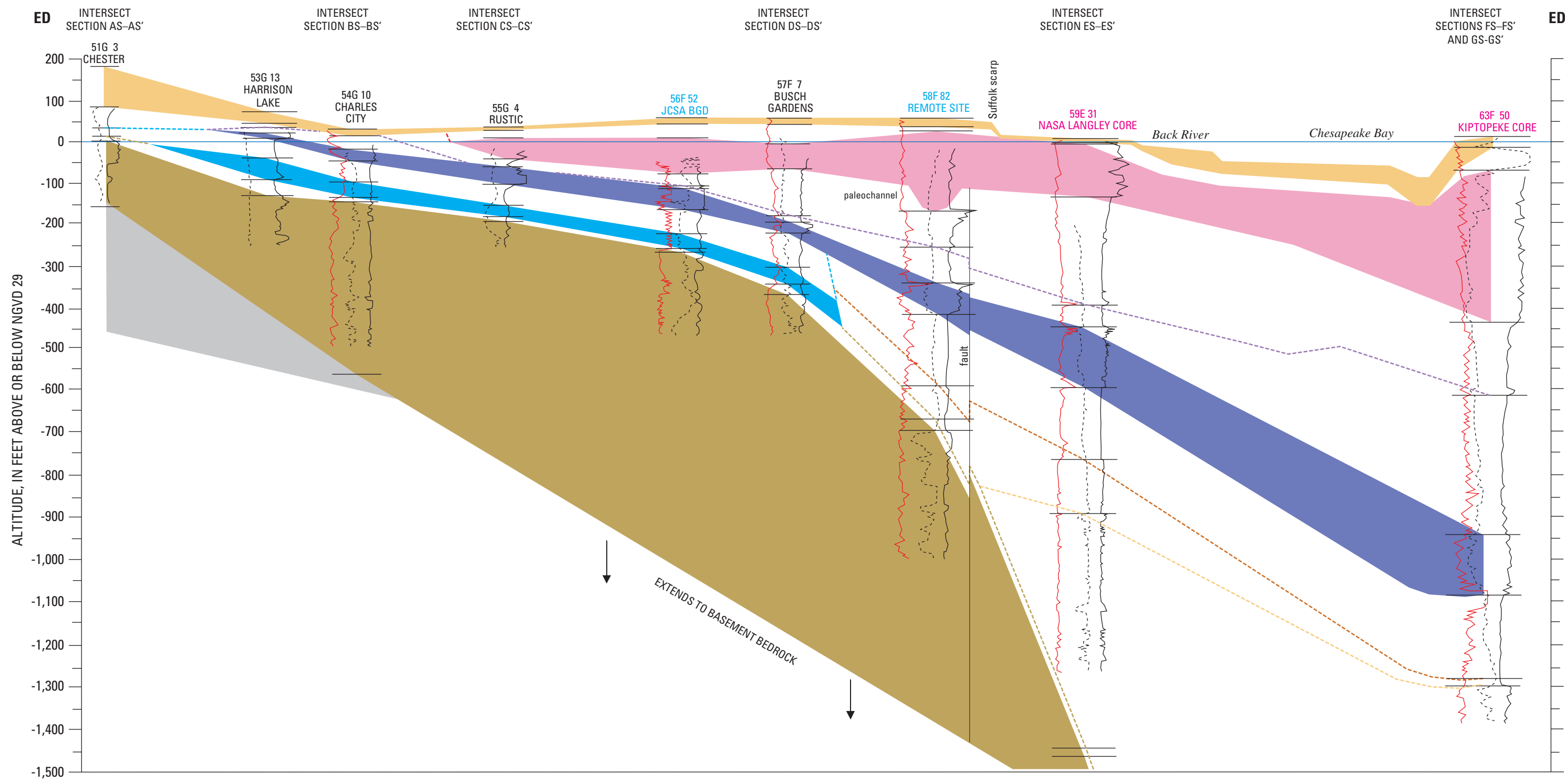
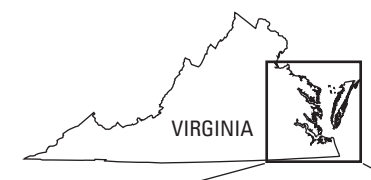
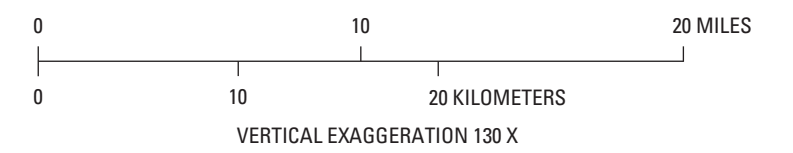


EXPLANATION
[Aquifers are shown by solid colors. Confining units and zones are shown by intervening blank areas following the sequence below. Where adjacent confining units or zones are in direct contact, the top surface of the unit or zone is shown by dashed lines.]

- Surficial aquifer
- Yorktown confining zone
- Yorktown-Eastover aquifer
- Saint Marys confining unit
- Saint Marys aquifer
- Calvert confining unit
- Piney Point aquifer
- Chickahominy confining unit
- Exmore Matrix confining unit
- Exmore Clast confining unit
- Nanjemoy-Marlboro confining unit
- Aquia aquifer
- Peedee confining zone
- Peedee aquifer
- Virginia Beach confining zone
- Virginia Beach aquifer
- Upper Cenomanian confining unit
- Potomac confining zone
- Potomac aquifer
- Basement bedrock

BOREHOLE GEOPHYSICAL LOG
[Heading in blue indicates lithologic control from detailed cuttings descriptions, and in magenta from core. Heading in black indicates only drillers logs or no lithologic information available.]

- Borehole local number
- State observation-well number
- FENTRESS CORE
- Site name
- Spontaneous potential
- Natural gamma
- Interpreted interval
- Resistivity



HYDROGEOLOGIC SECTIONS DD-DD', ED-ED', AND FD-FD' IN THE VIRGINIA COASTAL PLAIN

By
E. Randolph McFarland and T. Scott Bruce
2006