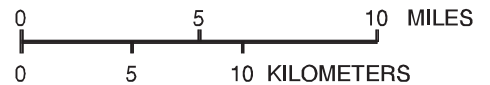


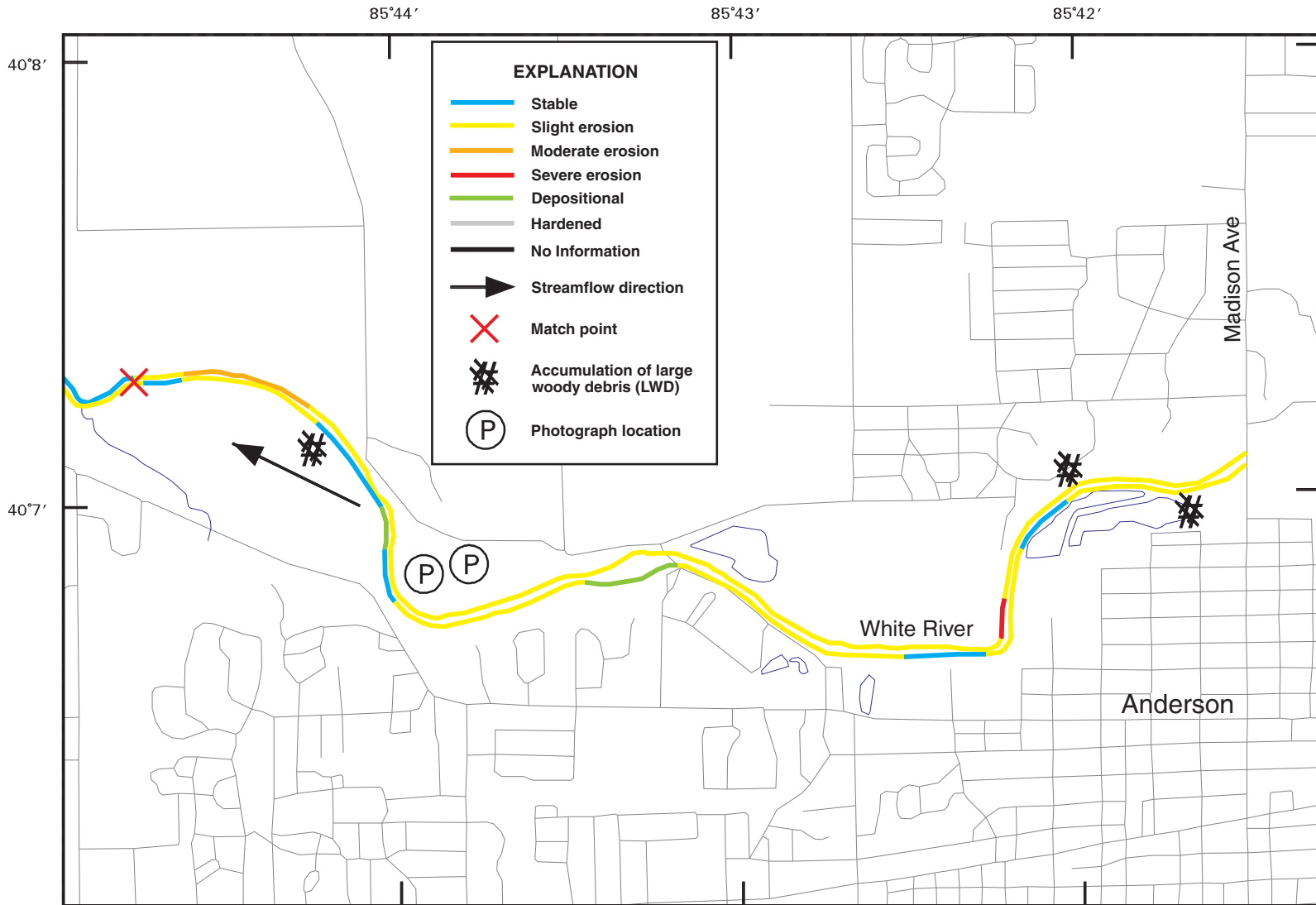
Base from U.S. Geological Survey digital data 1:100,000. 1983
 Universal Transvers Mercator projection, Zone 16, NAD 83



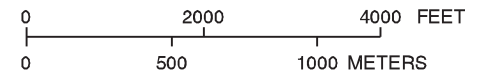
Index of Bank-Condition Maps

BANK-CONDITION MAP 1: WEST ANDERSON

MAPPED 2002

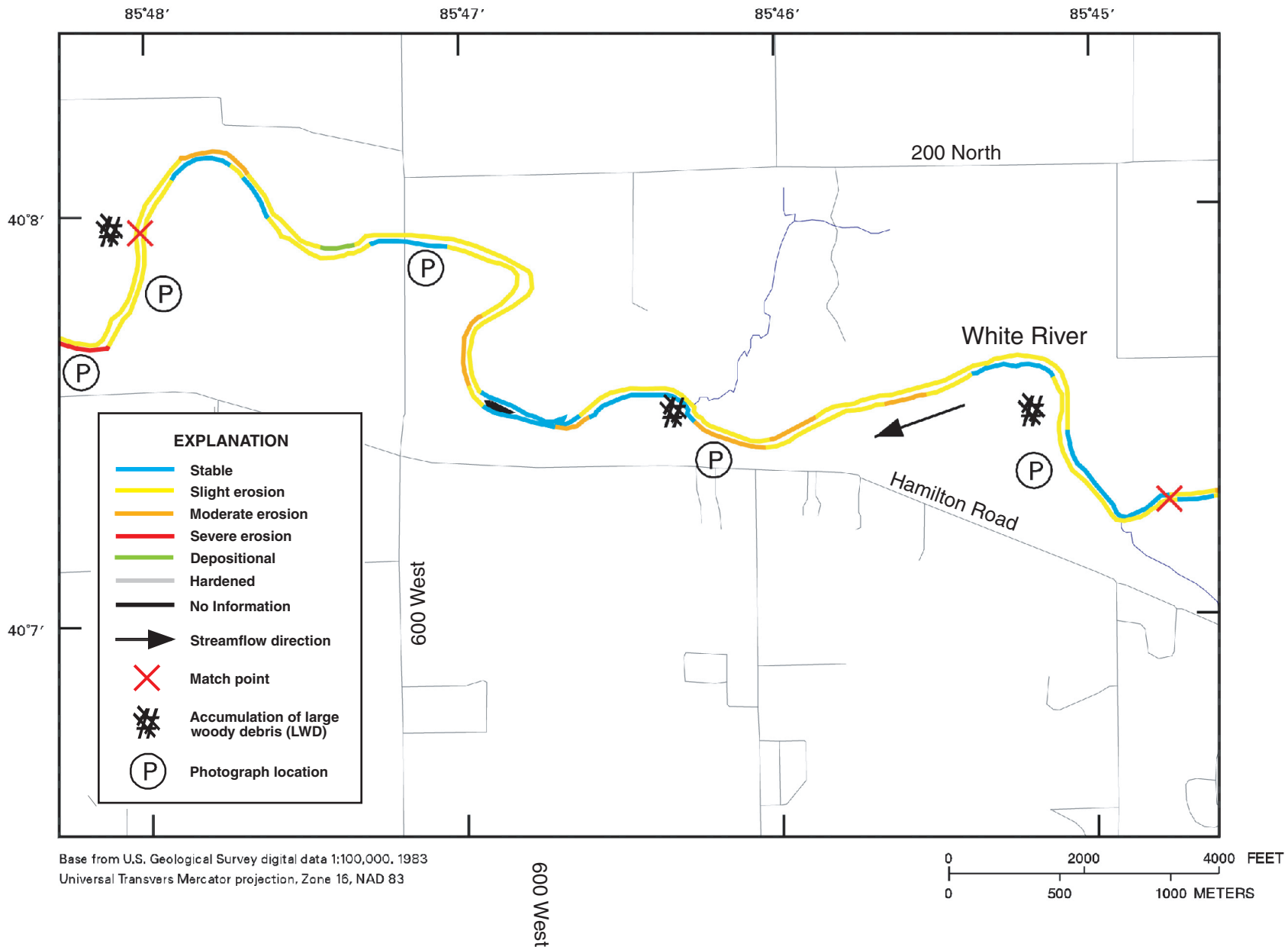


Base from U.S. Geological Survey digital data 1:100,000. 1983
Universal Transvers Mercator projection, Zone 16, NAD 83



BANK-CONDITION MAP 2: HAMILTON

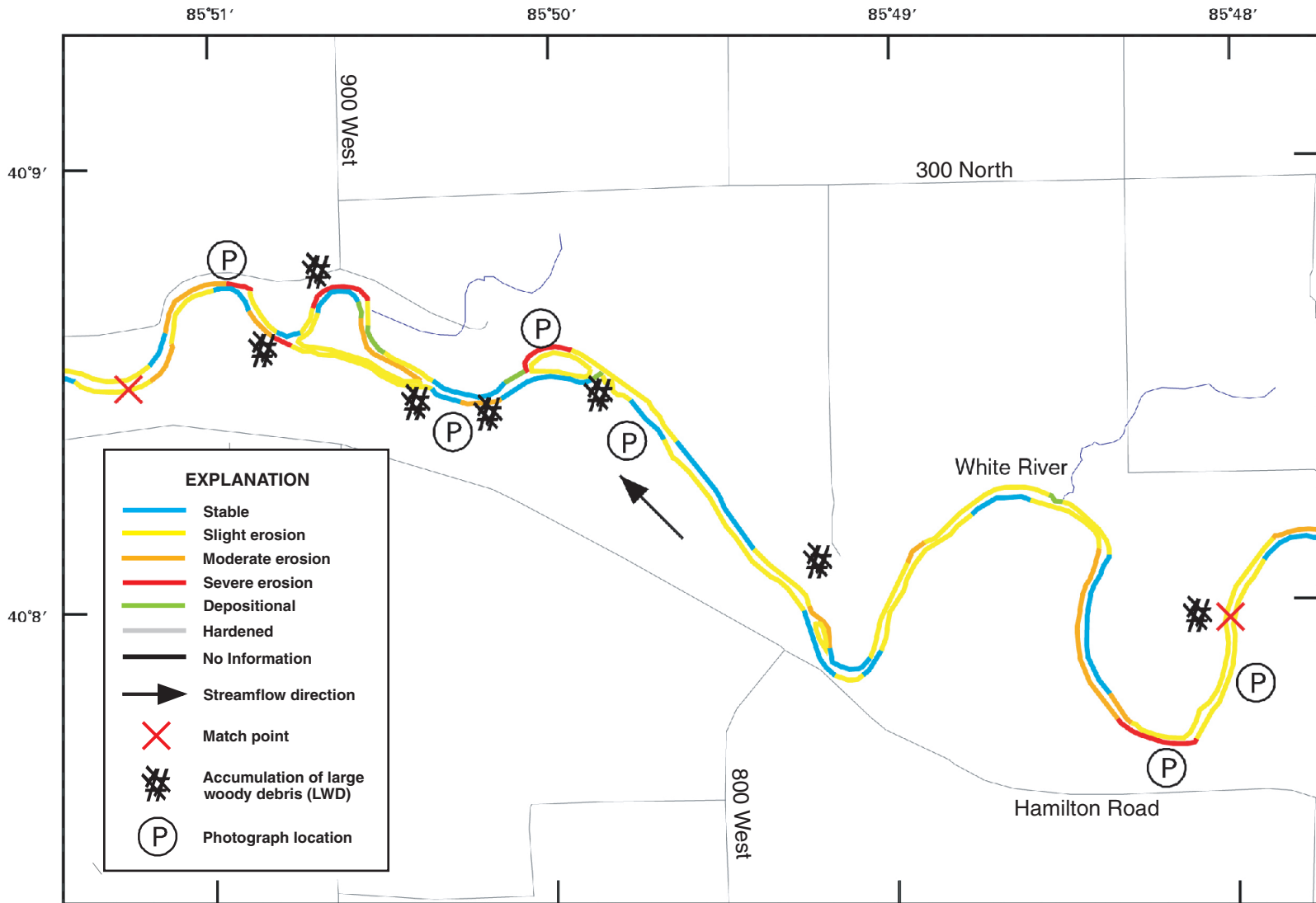
MAPPED 2002



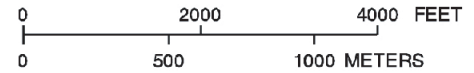
Base from U.S. Geological Survey digital data 1:100,000, 1983
 Universal Transvers Mercator projection, Zone 16, NAD 83

BANK-CONDITION MAP 3: CAMP KIKTHAWENUND

MAPPED 2002

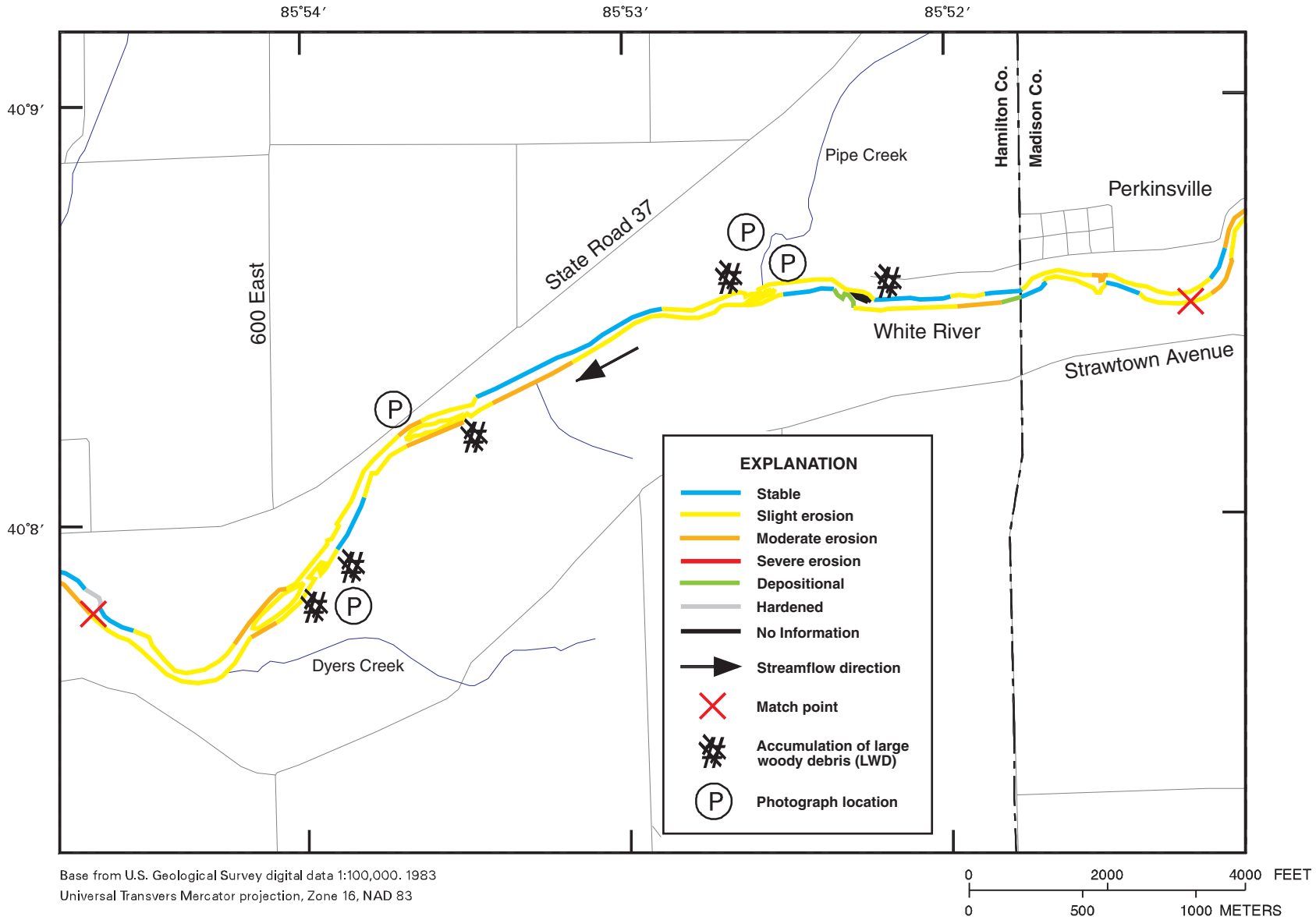


Base from U.S. Geological Survey digital data 1:100,000, 1983
 Universal Transvers Mercator projection, Zone 16, NAD 83



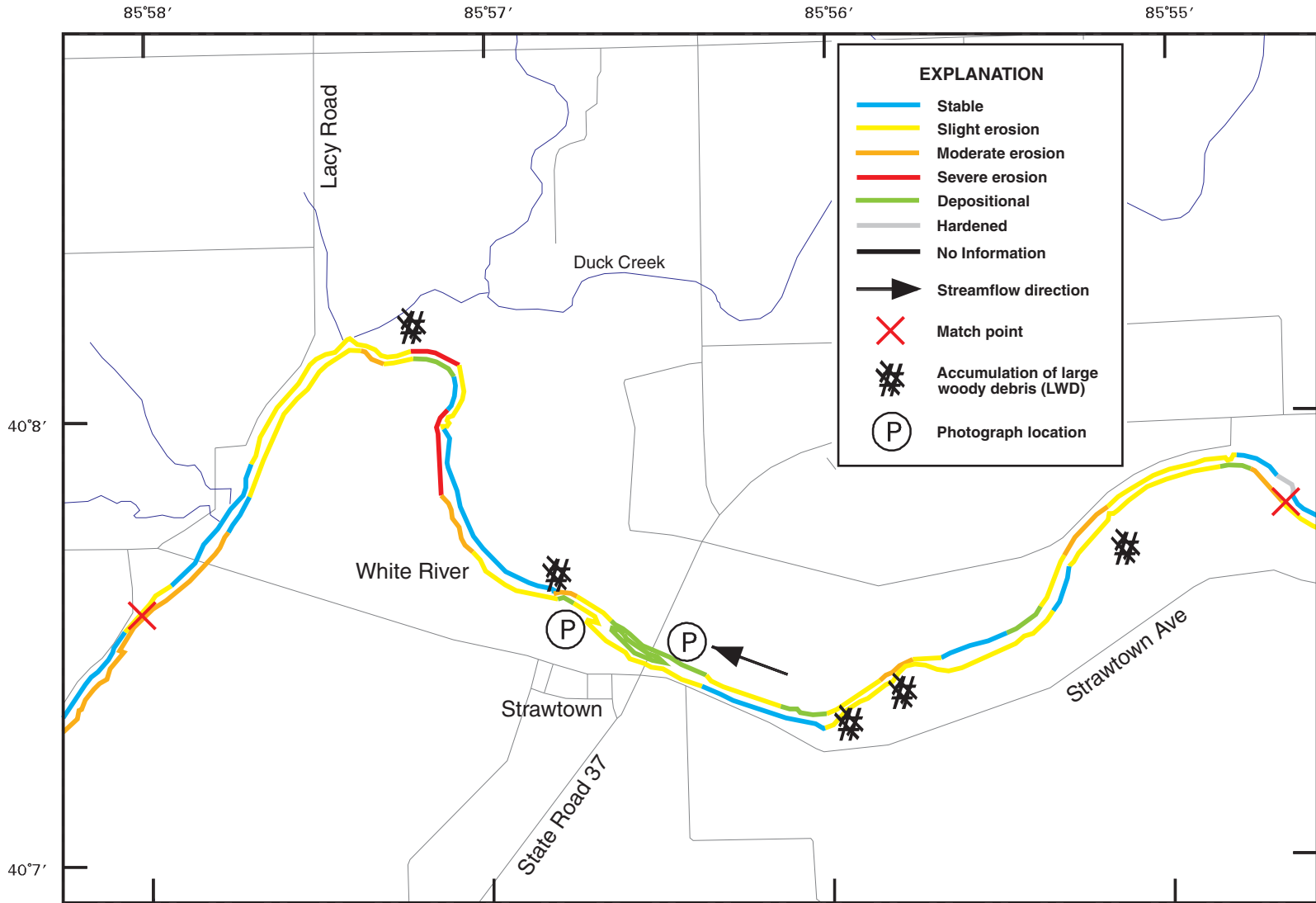
BANK-CONDITION MAP 4: PERKINSVILLE

MAPPED 2002



BANK-CONDITION MAP 5: STRAWTOWN

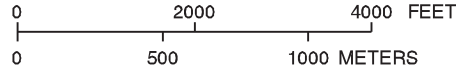
MAPPED 2002



EXPLANATION

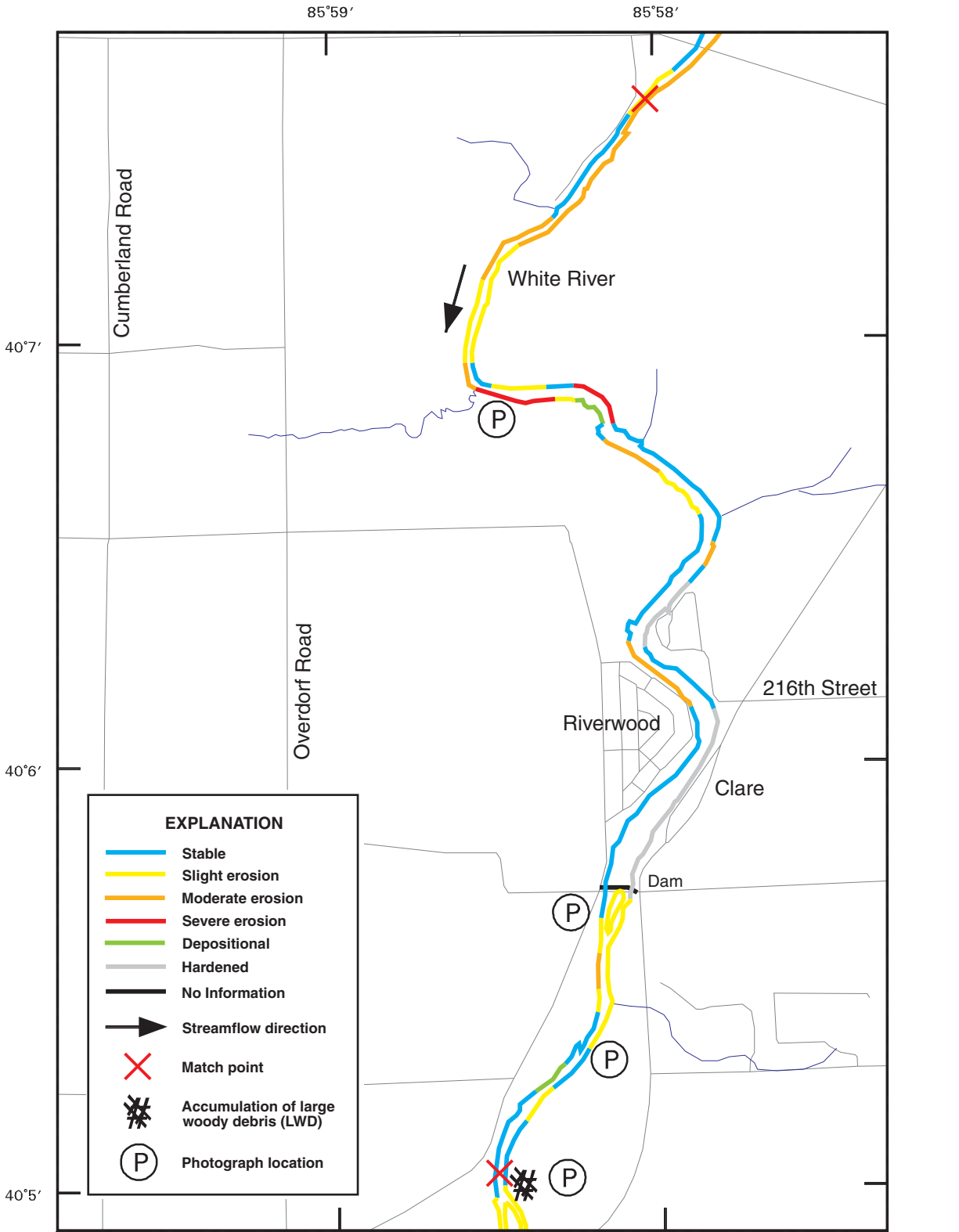
- Stable
- Slight erosion
- Moderate erosion
- Severe erosion
- Depositional
- Hardened
- No Information
- ➔ Streamflow direction
- ✕ Match point
- ✱ Accumulation of large woody debris (LWD)
- P Photograph location

Base from U.S. Geological Survey digital data 1:100,000, 1983
 Universal Transvers Mercator projection, Zone 16, NAD 83

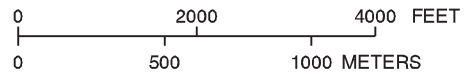


BANK-CONDITION MAP 6: RIVERWOOD/CLARE

MAPPED 2002

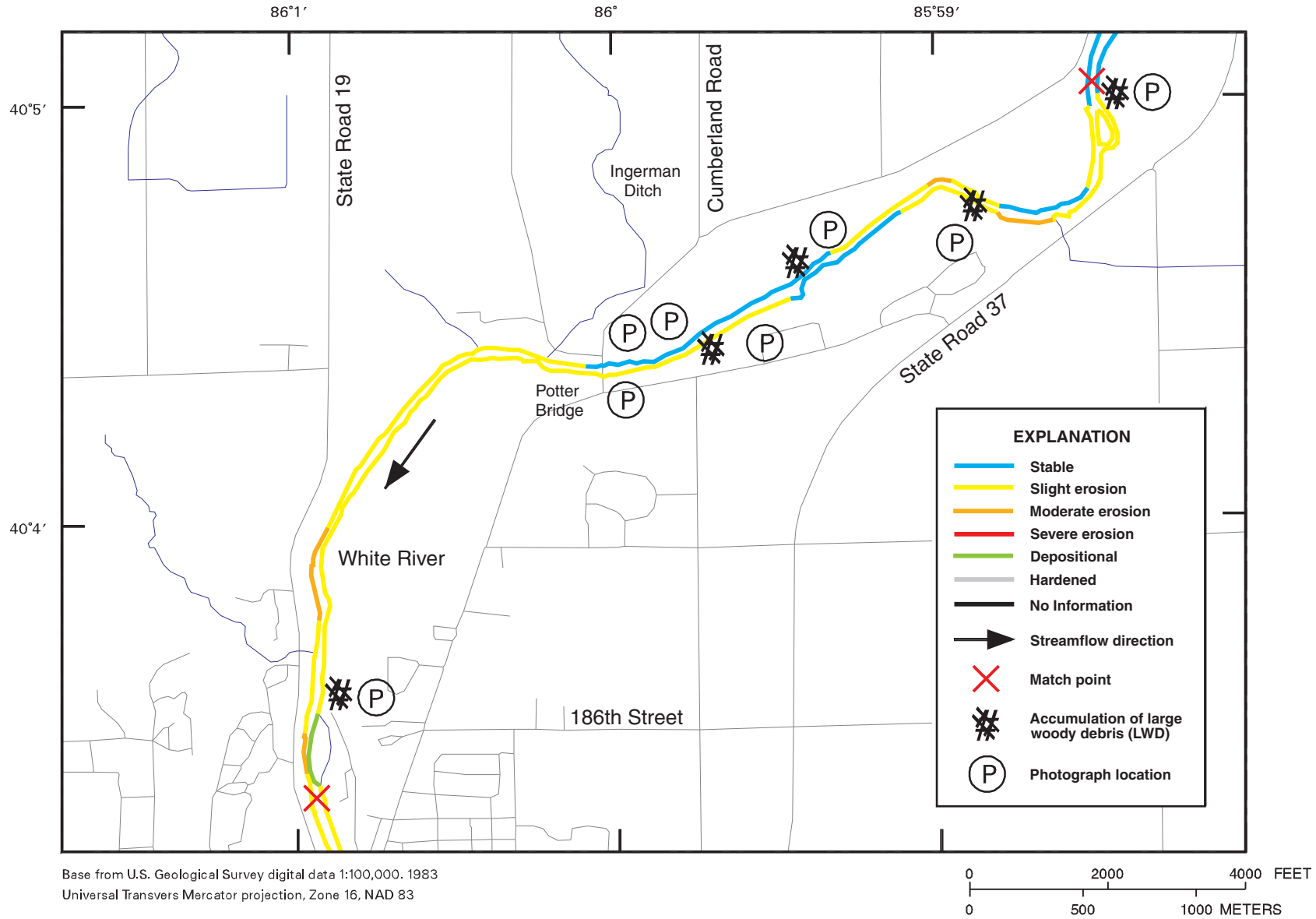


Base from U.S. Geological Survey digital data 1:100,000. 1983
 Universal Transvers Mercator projection, Zone 16, NAD 83



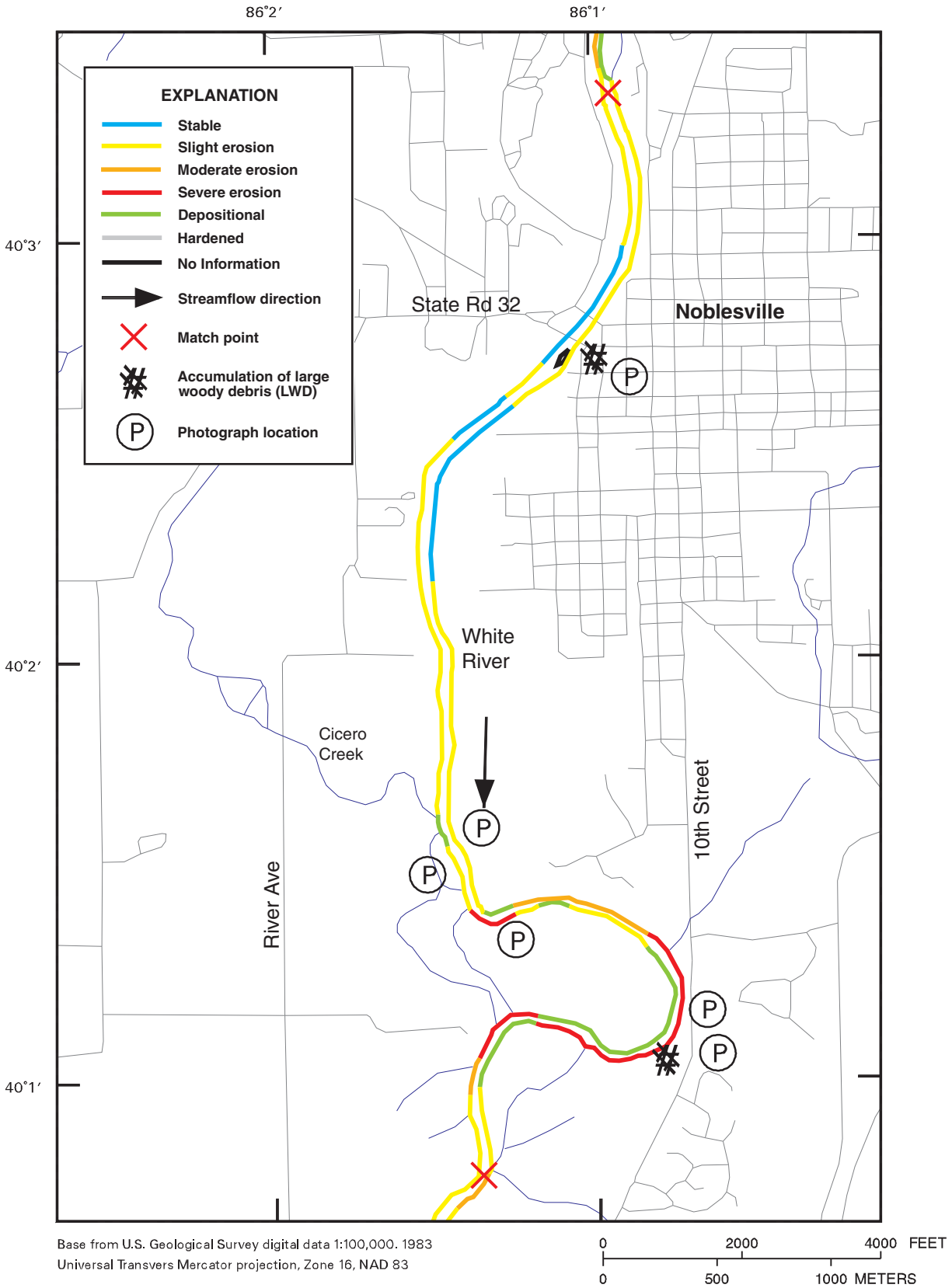
BANK-CONDITION MAP 7: POTTER BRIDGE

MAPPED 2002



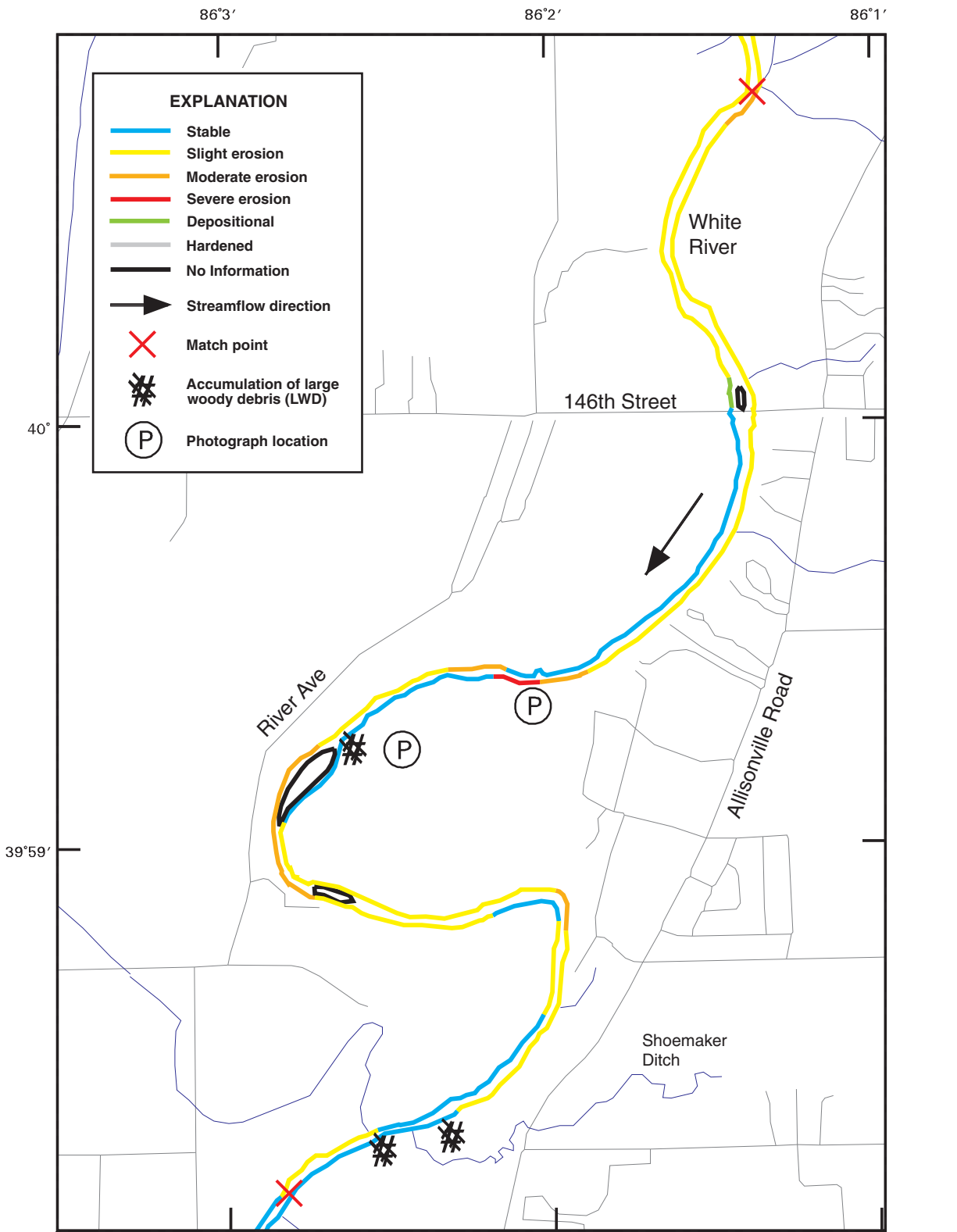
BANK-CONDITION MAP 8: NOBLESVILLE

MAPPED 2002

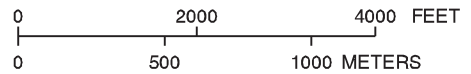


BANK-CONDITION MAP 9: CONNER PRAIRIE

MAPPED 2002

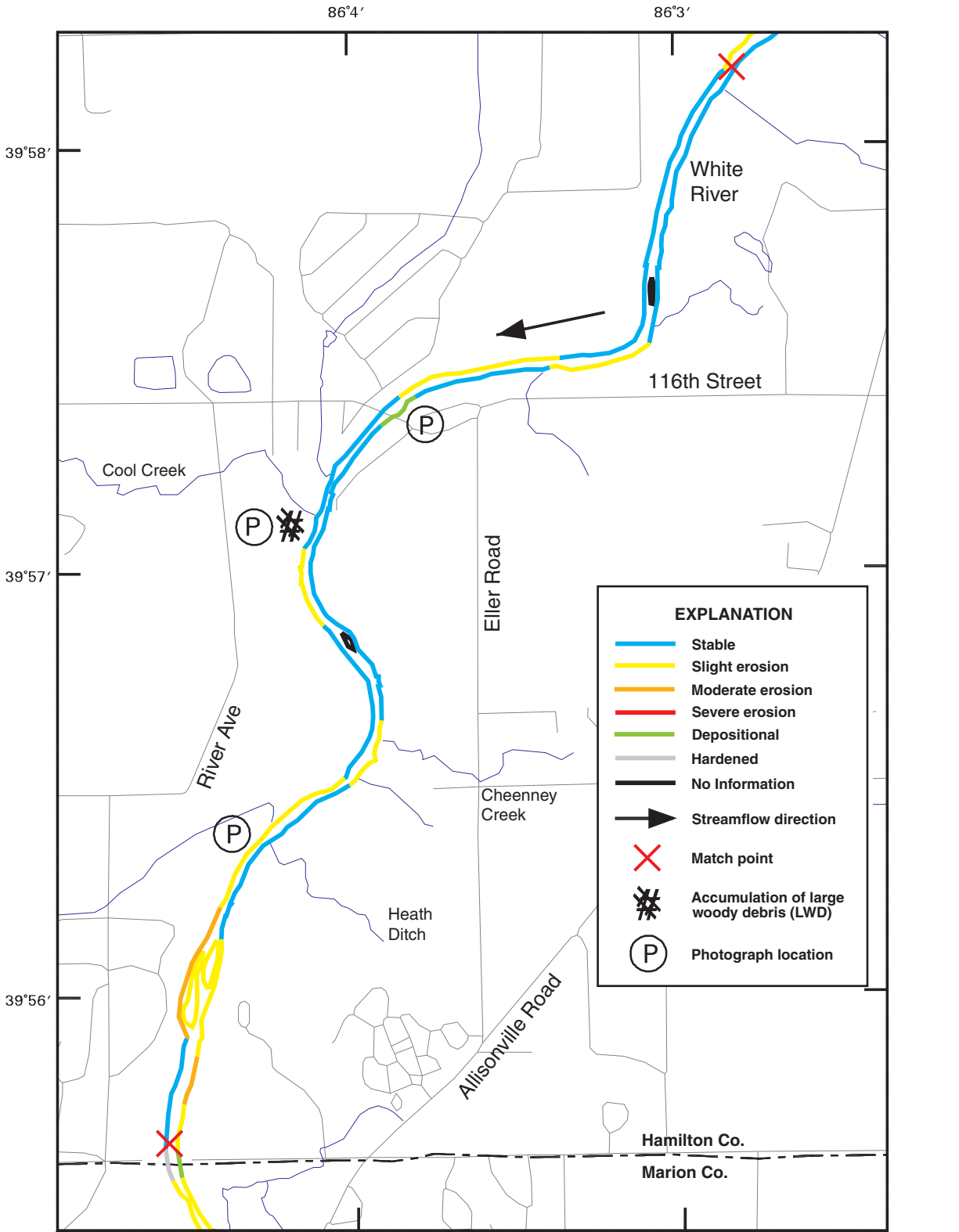


Base from U.S. Geological Survey digital data 1:100,000. 1983
 Universal Transvers Mercator projection, Zone 16, NAD 83

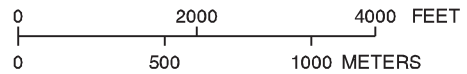


BANK-CONDITION MAP 10: 116TH STREET

MAPPED 2002

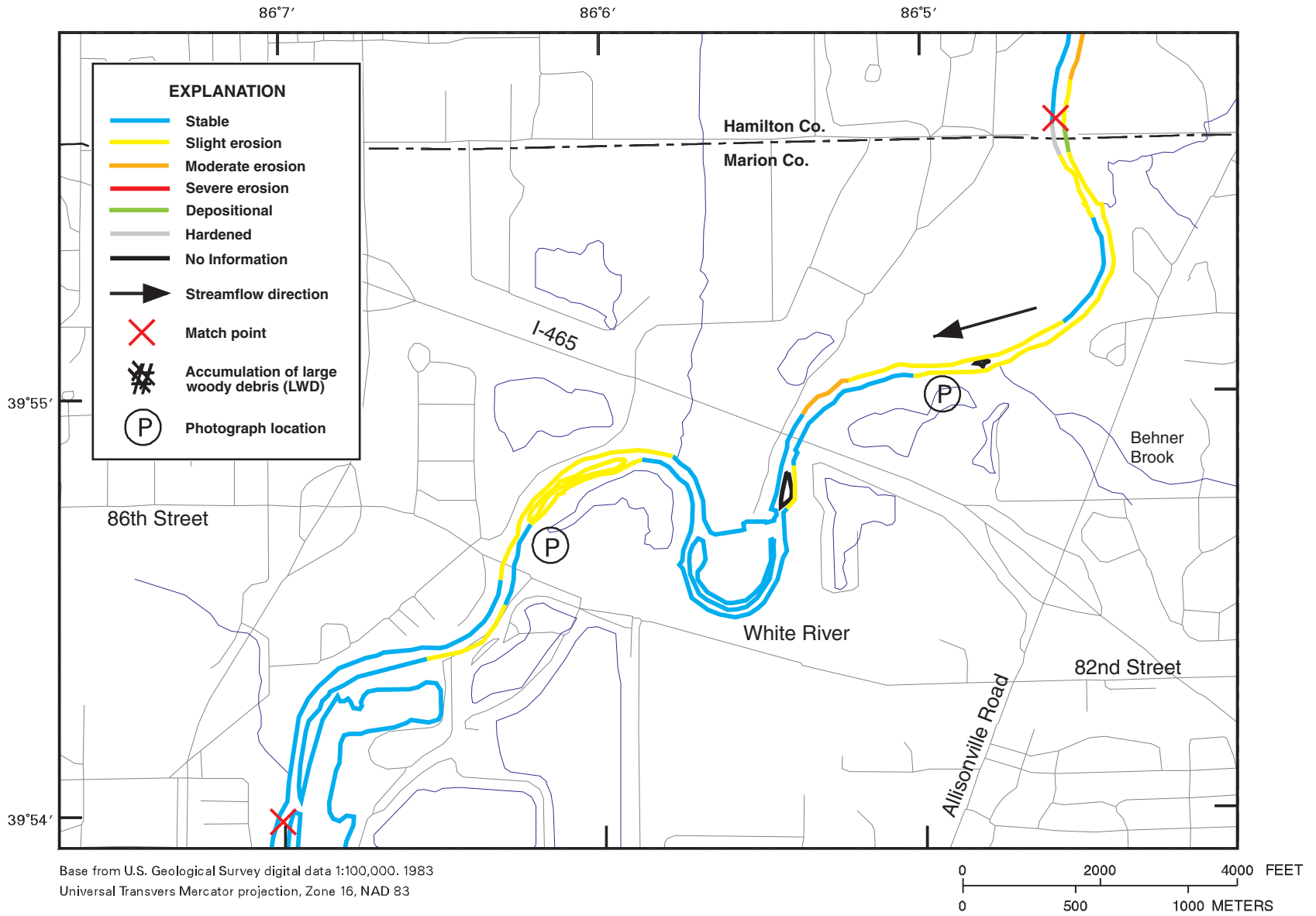


Base from U.S. Geological Survey digital data 1:100,000, 1983
 Universal Transvers Mercator projection, Zone 16, NAD 83



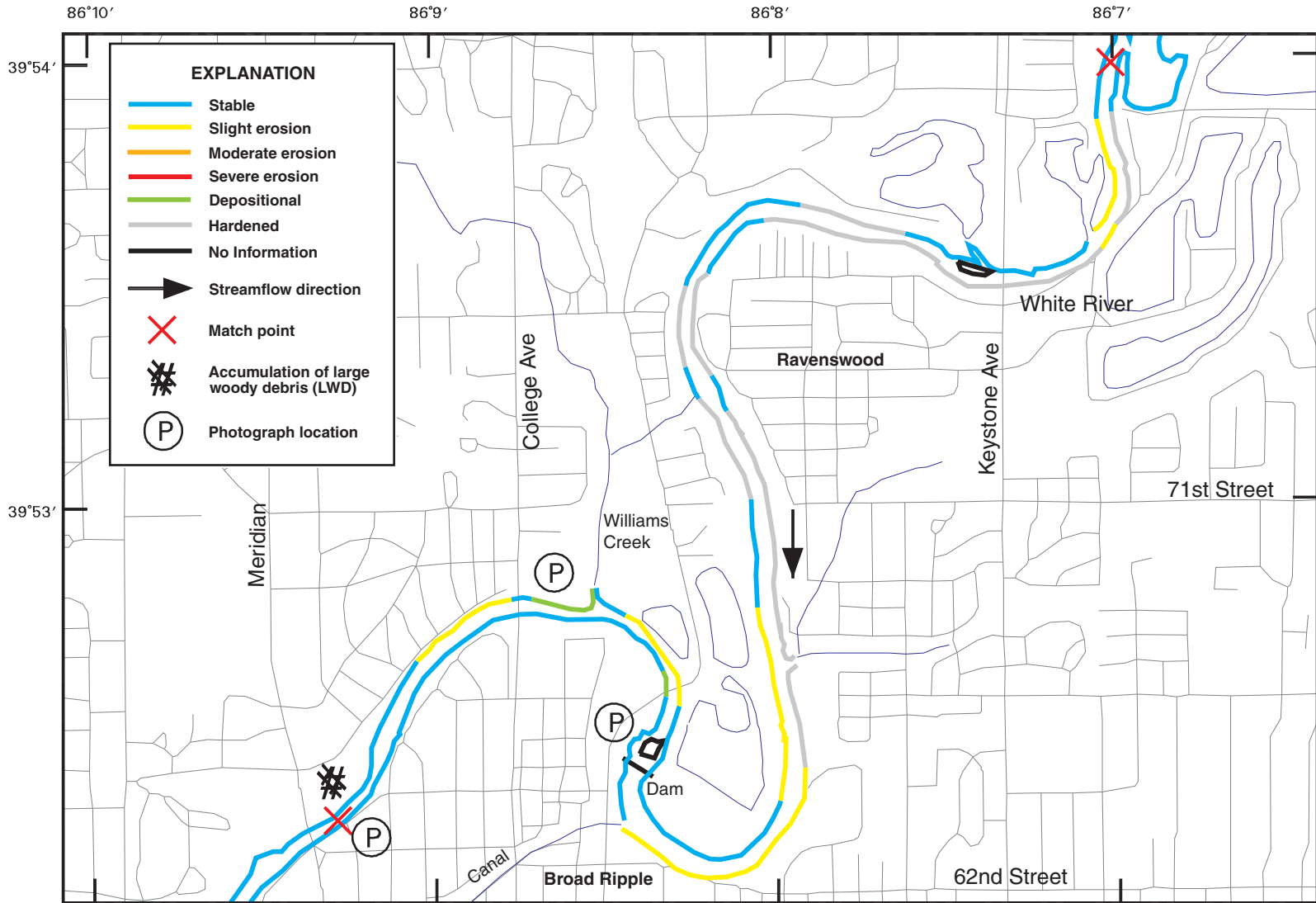
BANK-CONDITION MAP 11: I-465

MAPPED 2002

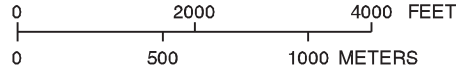


BANK-CONDITION MAP 12: BROAD RIPPLE

MAPPED 2002

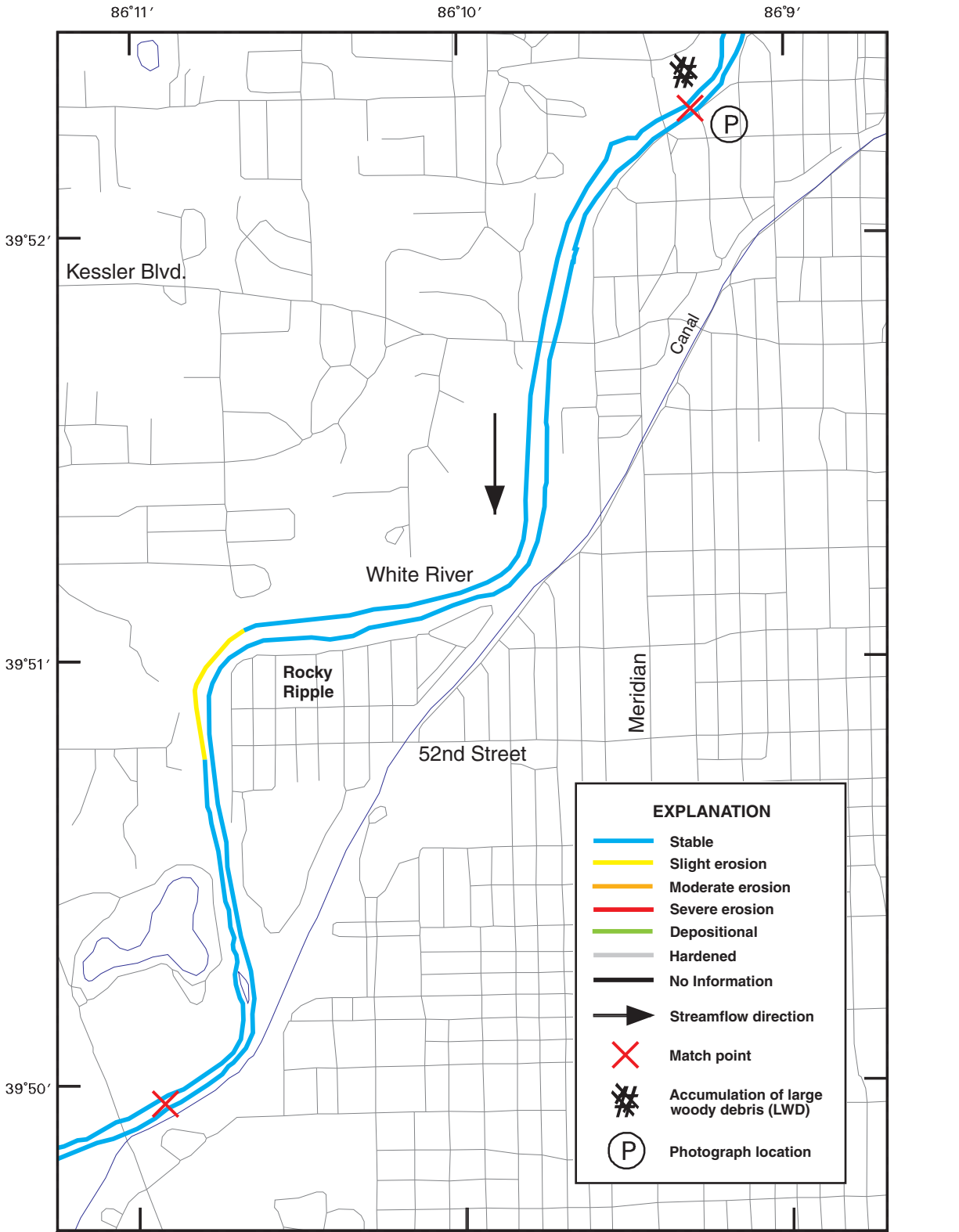


Base from U.S. Geological Survey digital data 1:100,000. 1983
 Universal Transvers Mercator projection, Zone 16, NAD 83

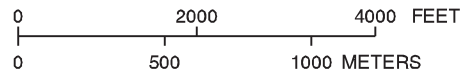


BANK-CONDITION MAP 13: ROCKY RIPPLE

MAPPED 2002

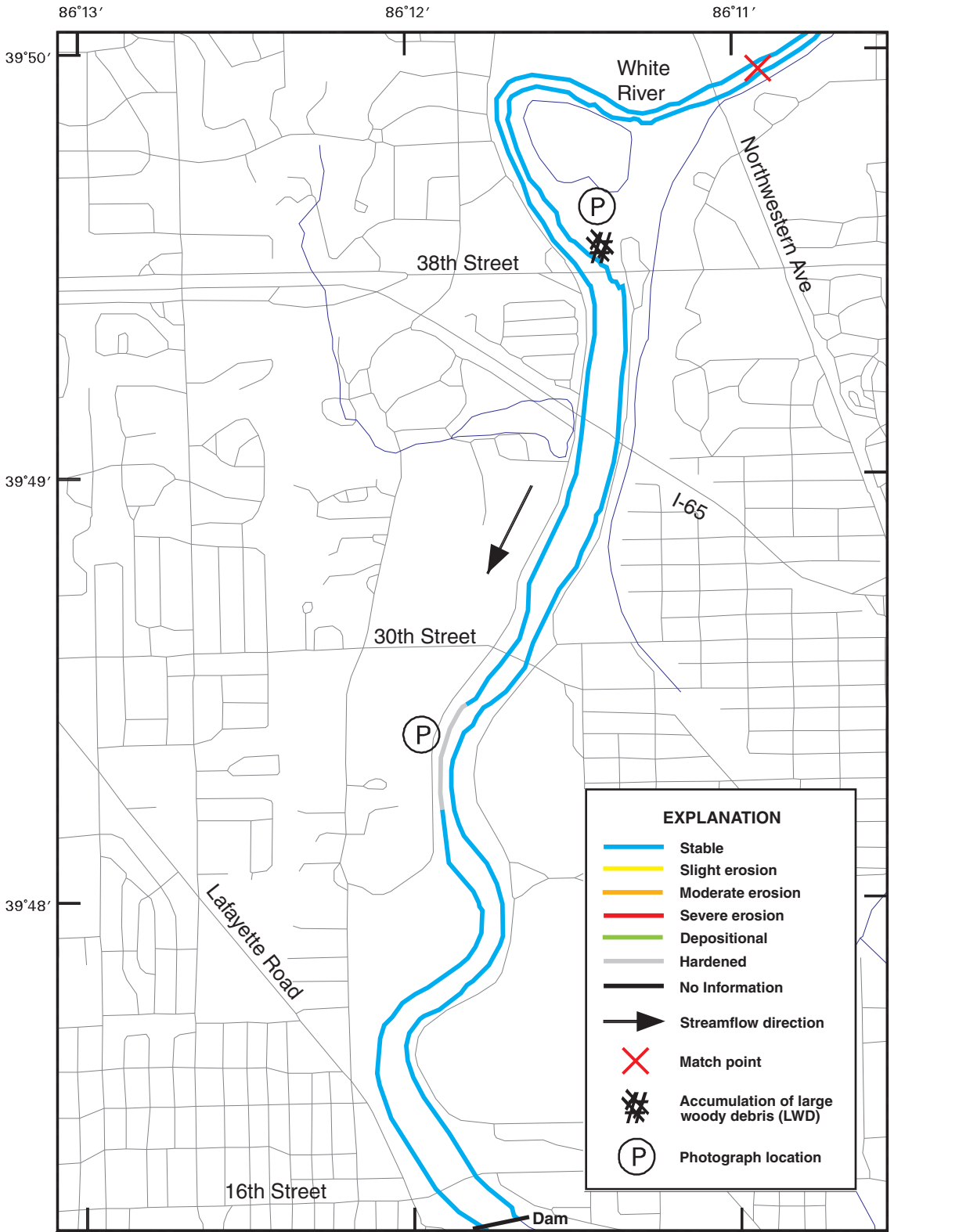


Base from U.S. Geological Survey digital data 1:100,000, 1983
 Universal Transvers Mercator projection, Zone 16, NAD 83



BANK-CONDITION MAP 14: LAKE INDY

MAPPED 2002



Base from U.S. Geological Survey digital data 1:100,000, 1983
 Universal Transvers Mercator projection, Zone 16, NAD 83

