
**APPENDIX 1. Graphs showing borehole geophysical logs of
three sites in New Hampshire**

SITE 4, WELL GNW 406

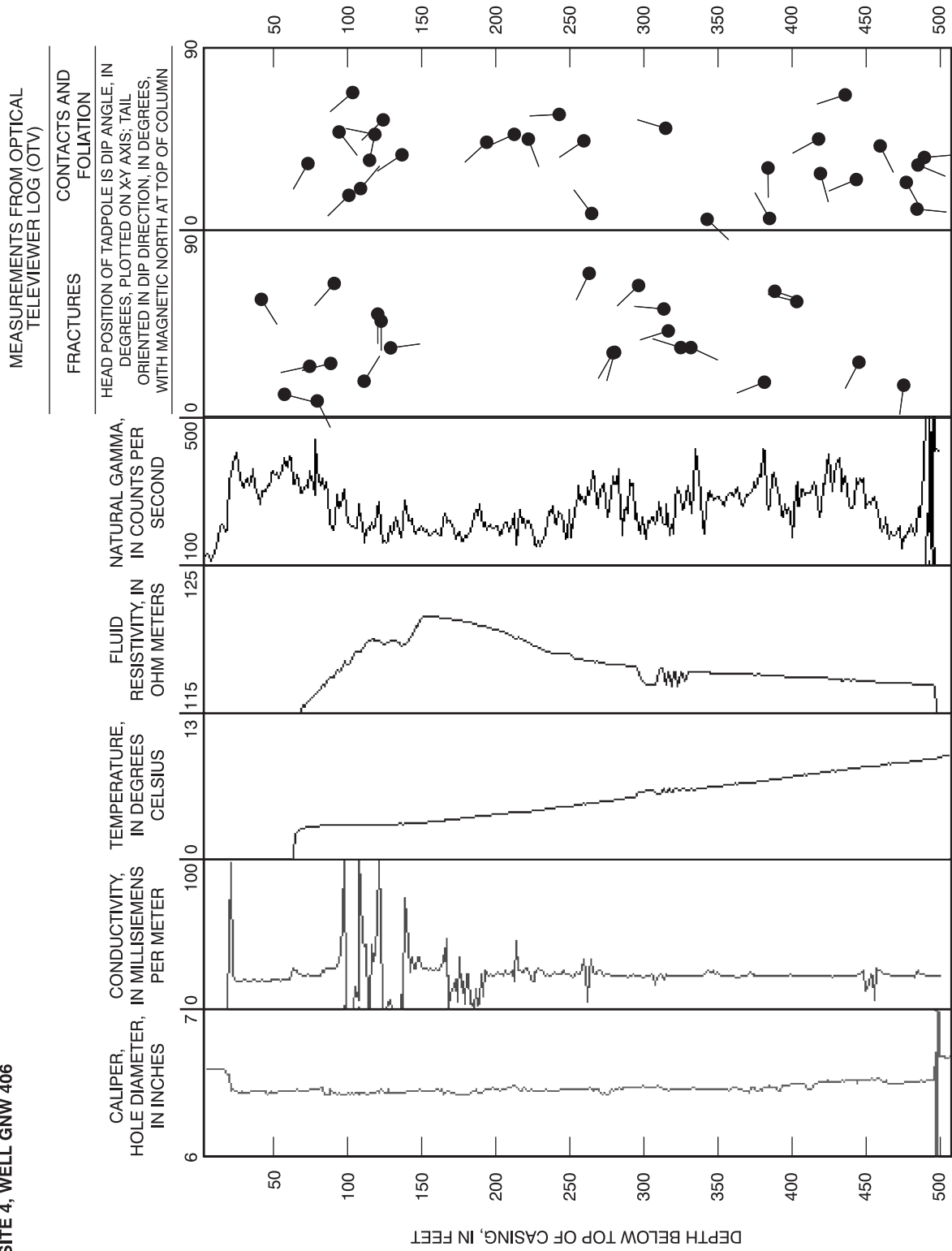


Figure 1A. Borehole geophysical logs of well GNW 406 at site 4, Goffstown, N.H. Site and line locations are shown on figures 1 and 26, respectively.

SITE 5, WELL GNW 408

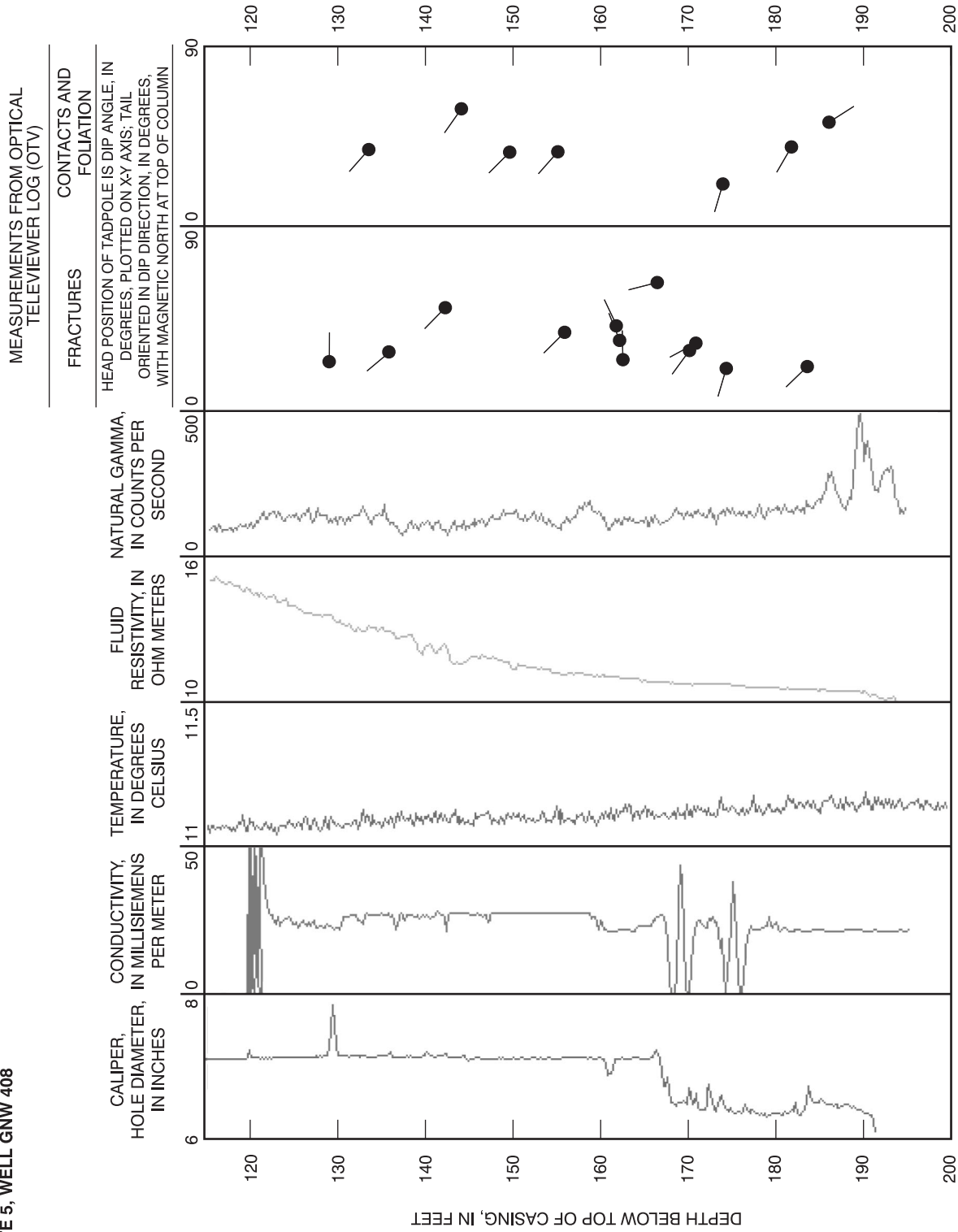


Figure AB. Borehole geophysical logs of well GNW 408 at site 5, Goffstown, N.H. Site and line locations are shown on figures 1 and 33, respectively.

SITE 6, WELL SAW 272

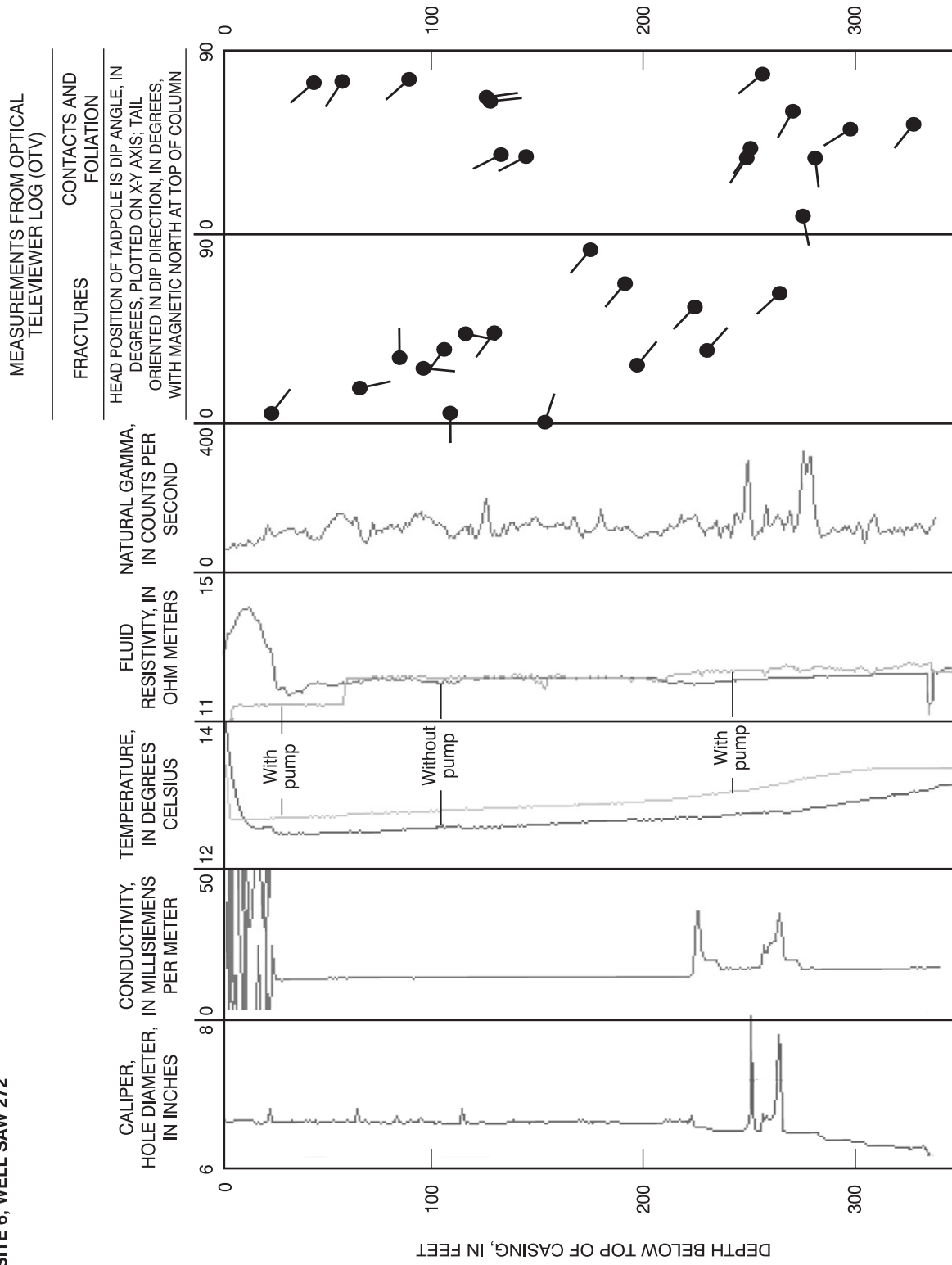


Figure 1c. Borehole geophysical logs of well SAW 272 at site 6, Salem, N.H. Site and line locations are shown on figures 1 and 40, respectively.



GEOPHYSICAL INVESTIGATIONS OF WELL FIELDS TO CHARACTERIZE FRACTURED-BEDROCK AQUIFERS IN SOUTHERN NEW HAMPSHIRE—
Degnan, J.R., Moore, R.B., and Mack, T.J.
USGS Water-Resources Investigations Report 01-4183