

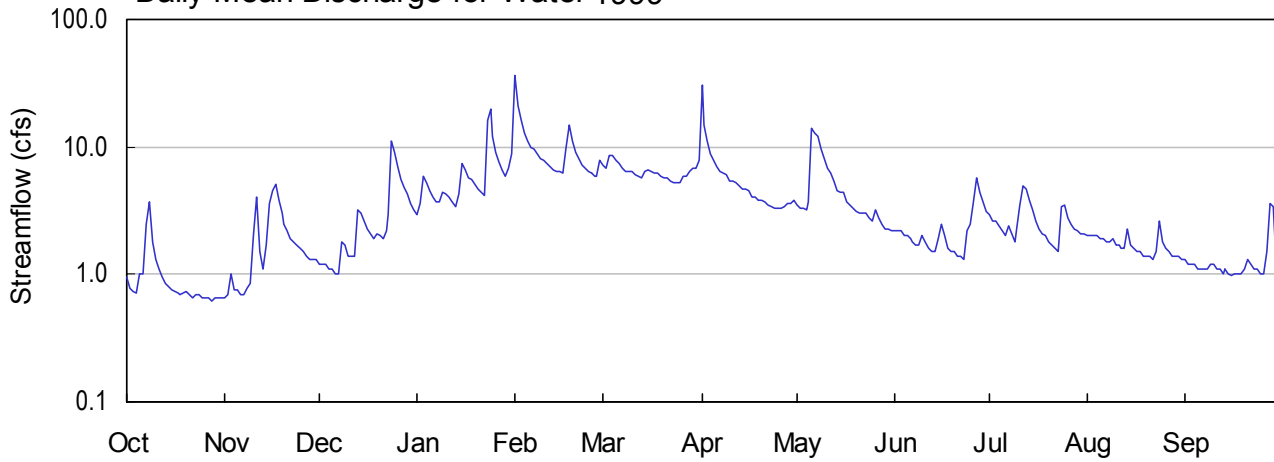
TENNESSEE RIVER BASIN

03544947

BRIER CREEK NEAR HIAWASSEE, GEORGIA

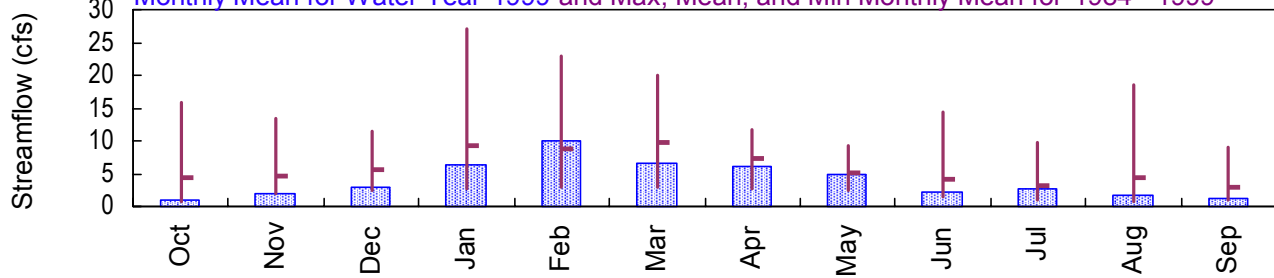
Latitude: 34° 50' 05" Longitude: 83° 42' 34" Hydrologic Unit Code: 06020002 Towns County
 Drainage Area: 1.67 mi² Datum: 2141. feet Period of Record: 1984 - 1999

Daily Mean Discharge for Water 1999

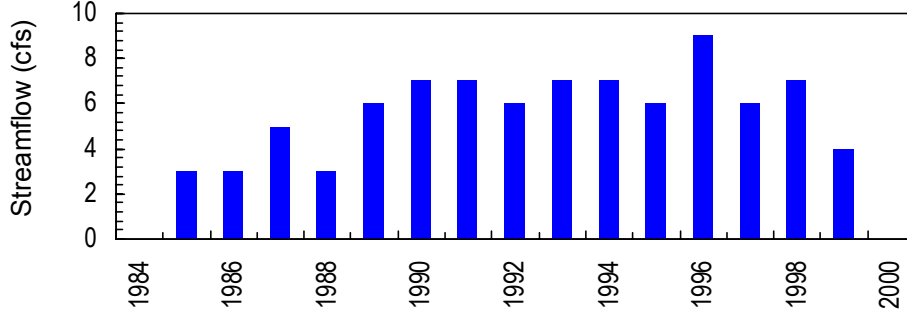


Monthly Statistics

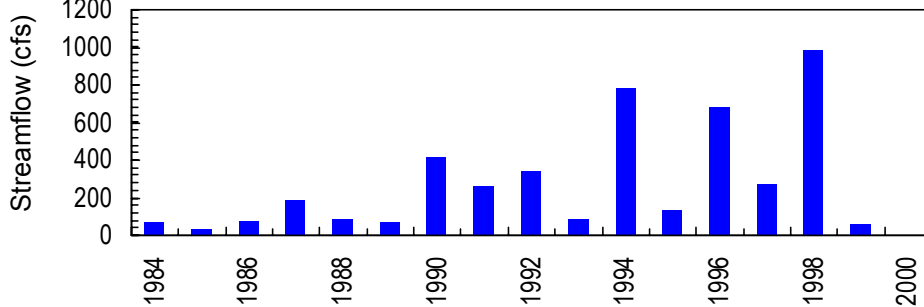
Monthly Mean for Water Year 1999 and Max, Mean, and Min Monthly Mean for 1984 - 1999



Annual Mean Streamflow



Annual Peak Streamflow



**TENNESSEE RIVER BASIN
1999 Water Year**

03544947 BRIER CREEK NEAR HIAWASSEE, GA

LOCATION.--Lat 34°50'05", long 83°42'34", Towns County, Hydrologic Unit 06020002, on left bank, 0.3 miles upstream from Corbin Creek, and 8.2 miles southeast of Hiawassee.

DRAINAGE AREA.--1.67 mi².

PERIOD OF RECORD.--May 1984 to current year.

REVISED RECORDS.--WDR GA-89-1: Drainage area. WDR GA-90-1: 1984- 89(M).

GAGE.--Water-stage recorder. Datum of gage is 2,141.43 feet above sea level (leveling by Global Positioning System equipment).

REMARKS.--Records good to fair, except those greater than 20 ft³/s, which are poor.

PEAK DISCHARGES FOR CURRENT YEAR.--Peak discharge greater than base discharge of 35 ft³/s and maximum (*):

DATE	TIME	DISCHARGE (ft ³ /s)	GAGE HEIGHT (ft)
Feb. 1	1115	47	2.62
Apr. 1	0230	59*	2.71*

STATION NUMBER 03544947 BRIER CREEK NEAR HIAWASSEE, GEORGIA STREAM SOURCE AGENCY USGS
 LATITUDE 345005 LONGITUDE 0834234 DRAINAGE AREA 1.67 DATUM 2141.43 STATE 13 COUNTY 281

PROVISIONAL DATA

SUBJECT TO REVISION

DISCHARGE, CUBIC FEET PER SECOND, WATER YEAR OCTOBER 1998 TO SEPTEMBER 1999
 DAILY MEAN VALUES

DAY	OCT	NOV	DEC	JAN	FEB	MAR	APR	MAY	JUN	JUL	AUG	SEP
1	.94	.66	1.2	2.9	36	7.3	31	3.5	2.2	2.9	2.0	1.3
2	.77	.70	1.2	3.6	21	6.8	15	3.3	2.2	2.6	2.0	1.2
3	.73	1.0	1.2	5.9	16	8.6	11	3.3	2.2	2.6	2.0	1.2
4	.71	.76	1.1	5.3	13	8.6	8.9	3.2	2.0	2.4	2.0	1.2
5	1.0	.76	1.1	4.6	11	7.9	7.8	3.7	2.0	2.2	1.9	1.1
6	1.0	.70	1.0	4.1	10	7.4	7.0	14	1.9	2.0	1.9	1.1
7	2.5	.70	1.0	3.7	9.6	6.8	6.5	13	1.8	2.4	1.8	1.1
8	3.7	.78	1.8	3.7	8.8	6.4	6.3	12	1.7	2.1	1.8	1.1
9	1.8	.85	1.7	4.4	8.1	6.5	6.1	9.5	1.7	1.8	1.9	1.2
10	1.3	2.0	1.4	4.3	7.8	6.4	5.4	8.0	2.0	2.3	1.7	1.2
11	1.1	4.0	1.4	4.0	7.4	6.1	5.4	6.8	1.8	3.5	1.7	1.1
12	.94	1.5	1.4	3.7	7.1	5.9	5.2	6.3	1.6	4.9	1.6	1.1
13	.86	1.1	3.2	3.4	6.7	5.8	5.0	5.4	1.5	4.7	1.6	1.0
14	.80	1.7	3.0	4.3	6.5	6.5	4.7	4.6	1.5	3.8	2.3	1.1
15	.75	3.6	2.6	7.4	6.4	6.6	4.7	4.4	1.9	3.2	1.7	1.0
16	.73	4.5	2.3	6.7	6.2	6.5	4.5	4.4	2.5	2.6	1.6	.99
17	.71	5.1	2.1	5.8	10	6.3	4.1	3.7	2.0	2.3	1.5	1.0
18	.70	3.8	1.9	5.6	15	6.2	4.1	3.5	1.6	2.1	1.5	1.0
19	.72	3.0	2.1	5.1	11	5.9	3.8	3.3	1.5	2.0	1.4	1.0
20	.74	2.5	2.0	4.7	9.1	5.7	3.8	3.1	1.5	1.8	1.4	1.1
21	.69	2.2	1.9	4.4	8.1	5.7	3.7	3.0	1.4	1.7	1.4	1.3
22	.65	1.9	2.2	4.2	7.3	5.4	3.5	3.0	1.4	1.6	1.3	1.2
23	.70	1.8	2.9	16	6.8	5.2	3.4	3.0	1.3	1.5	1.5	1.1
24	.69	1.7	11	20	6.5	5.3	3.3	2.8	2.2	3.4	2.6	1.1
25	.66	1.6	9.2	12	6.2	5.2	3.3	2.6	2.5	3.5	1.8	1.0
26	.65	1.5	7.0	9.2	5.9	5.9	3.3	3.2	3.7	2.8	1.6	1.0
27	.65	1.4	5.6	7.6	5.9	5.9	3.4	2.8	5.8	2.5	1.5	1.5
28	.62	1.3	4.8	6.7	7.9	6.5	3.6	2.5	4.4	2.3	1.4	3.6
29	.65	1.3	4.3	5.9	---	6.9	3.6	2.3	3.7	2.2	1.4	3.4
30	.65	1.3	3.6	6.8	---	6.8	3.8	2.3	3.1	2.1	1.4	1.1
31	.65	---	3.2	8.8	---	7.9	---	2.2	---	2.1	1.3	---

TOTAL	29.76	55.71	90.4	194.8	281.3	200.9	185.2	148.7	66.6	79.9	52.5	38.39
MEAN	.96	1.86	2.92	6.28	10.0	6.48	6.17	4.80	2.22	2.58	1.69	1.28
MAX	3.7	5.1	11	20	36	8.6	31	14	5.8	4.9	2.6	3.6
MIN	.62	.66	1.0	2.9	5.9	5.2	3.3	2.2	1.3	1.5	1.3	.99
CFSM	.57	1.11	1.75	3.76	6.02	3.88	3.70	2.87	1.33	1.54	1.01	.77
IN.	.66	1.24	2.01	4.34	6.27	4.48	4.13	3.31	1.48	1.78	1.17	.86

STATISTICS OF MONTHLY MEAN DATA FOR WATER YEARS 1984 - 1999, BY WATER YEAR (WY)

MEAN	4.40	4.71	5.52	9.19	8.73	9.69	7.33	5.05	4.07	3.14	4.39	2.92
MAX	15.8	13.4	11.5	27.0	22.9	19.9	11.6	9.28	14.5	9.75	18.6	9.13
(WY)	1996	1993	1997	1996	1990	1990	1991	1991	1989	1989	1994	1996
MIN	.64	1.86	2.44	2.64	2.99	2.92	2.73	2.48	1.44	.87	.82	.87
(WY)	1988	1999	1985	1985	1986	1988	1986	1986	1988	1986	1986	1986

SUMMARY STATISTICS FOR 1998 CALENDAR YEAR FOR 1999 WATER YEAR WATER YEARS 1984 - 1999

ANNUAL TOTAL		2354.03		1424.16								
ANNUAL MEAN		6.45		3.90						5.74		
HIGHEST ANNUAL MEAN										9.17		1996
LOWEST ANNUAL MEAN										2.69		1986
HIGHEST DAILY MEAN		330	Jan 7		36	Feb 1				330	Jan 7	1998
LOWEST DAILY MEAN		.62	Oct 28		.62	Oct 28				.56	Oct 15	1987
ANNUAL SEVEN-DAY MINIMUM		.65	Oct 25		.65	Oct 25				.57	Oct 13	1987
INSTANTANEOUS PEAK FLOW					59	Apr 1				990	Jan 7	1998
INSTANTANEOUS PEAK STAGE					2.71	Apr 1				4.18	Jan 7	1998
INSTANTANEOUS LOW FLOW					.70	Oct 2				.70	Oct 2	1998
ANNUAL RUNOFF (CFSM)		3.86			2.34					3.44		
ANNUAL RUNOFF (INCHES)		52.44			31.72					46.71		
10 PERCENT EXCEEDS		11			7.8					10		
50 PERCENT EXCEEDS		2.8			2.6					3.9		
90 PERCENT EXCEEDS		.80			1.0					1.2		

STATISTICS COMPUTED BY: darrelle

DATE: 06/14/2000 AT: 15:23:50