

MOBILE RIVER BASIN

COOSA RIVER NEAR ROME, GA

02397000

Latitude: 34° 12' 01" Longitude: 85° 15' 24" Hydrologic Unit Code: 03150105

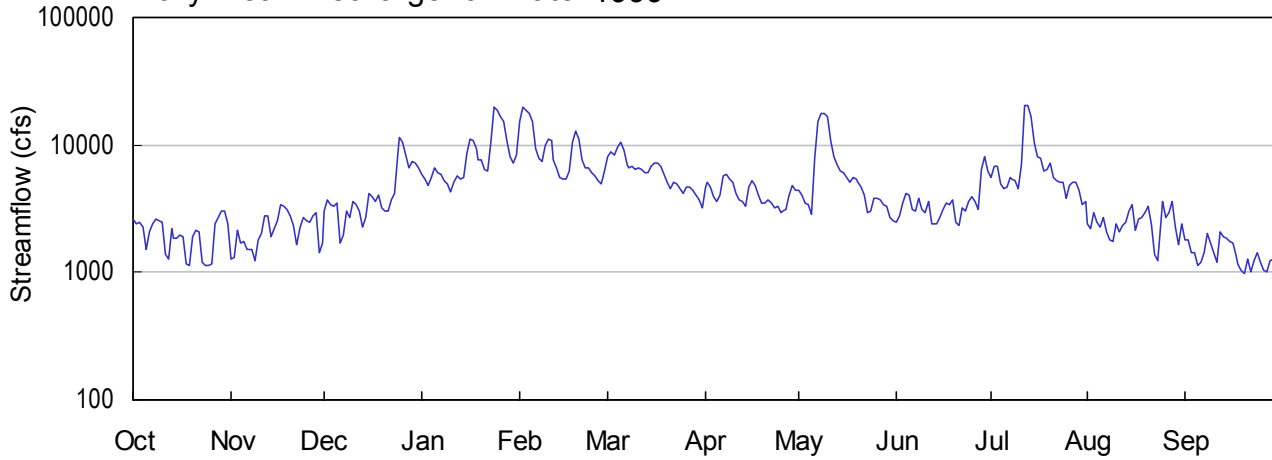
Floyd County

Drainage Area: 4040.0 mi²

Datum: 553.0 feet

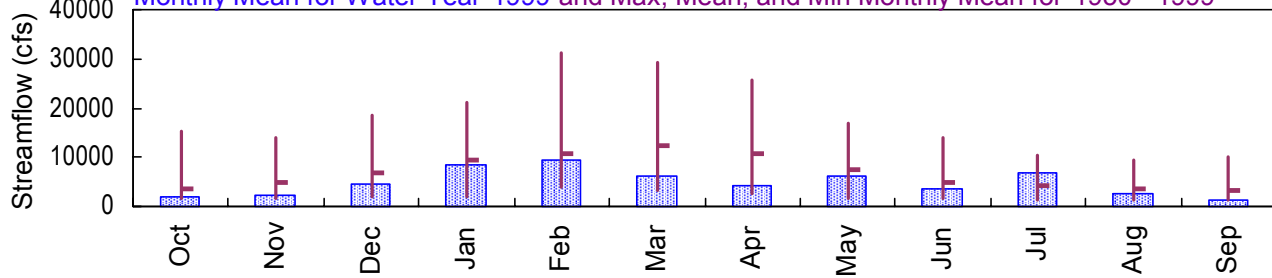
Period of Record: 1950 - 1999

Daily Mean Discharge for Water 1999

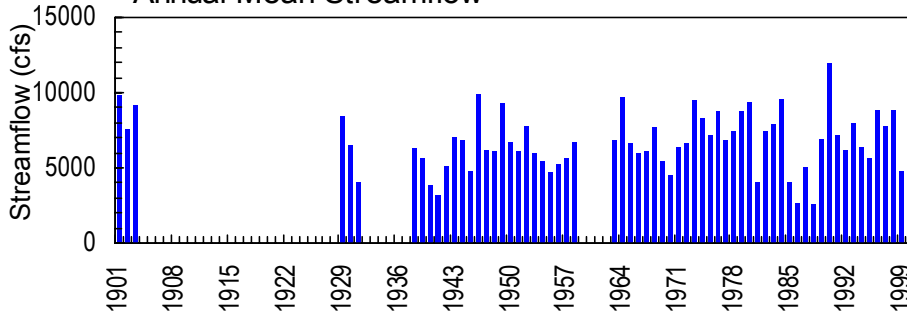


Monthly Statistics

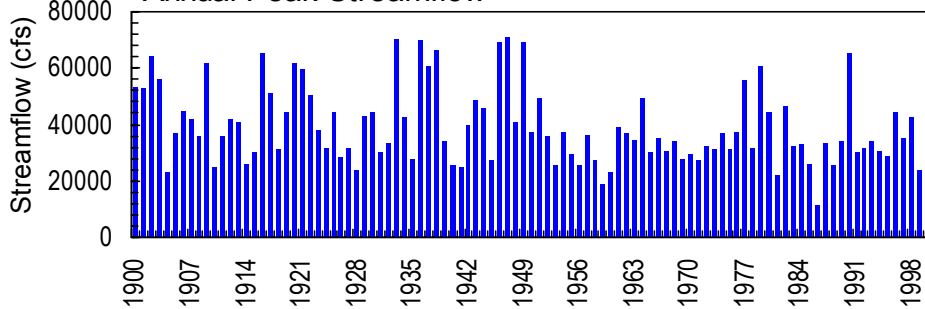
Monthly Mean for Water Year 1999 and Max, Mean, and Min Monthly Mean for 1950 - 1999



Annual Mean Streamflow



Annual Peak Streamflow



02397000 - Coosa River near Rome, GA

**MOBILE RIVER BASIN
1999 Water Year**

02397000 COOSA RIVER NEAR ROME, GA

LOCATION.--Lat 34°12'01", long 85°15'24", Floyd County, Hydrologic Unit 03150105, on left bank attached to left lock wall of Mayo's Bar lock near upstream end, 1.5 miles upstream from Webb Creek, 6.0 miles southwest of Rome, 7.5 miles downstream from confluence of Oostanaula and Etowah Rivers, and at mile 278.6.

DRAINAGE AREA.--4,040 mi², approximately.

WATER-DISCHARGE RECORDS

PERIOD OF RECORD.--October 1896 to December 1903 (published as "at Rome"), June 1928 to December 1931, March 1937 to December 1958, October 1962 to current year. Water years 1959-62 (annual maximum only). Gage-height records collected at same site for period 1922-49, are contained in reports of National Weather Service.

REVISED RECORDS.--WSP 1674, 1906: 1959(M) WDR GA-90-1: 1937-38(M), 1946(P), 1947(M), 1949(M), WDR GA-92-1: 1981.

GAGE.--Water-stage recorder. Datum of gage is 553.05 feet above sea level (levels by Corps of Engineers). From Jan. 1, 1897, to Dec. 31, 1903, non-recording gage was located at site 7.5 miles upstream at datum 8.65 feet higher. From June 21, 1928, to Dec. 31, 1931, and Mar. 10, 1937, to Dec. 31, 1958, water-stage recorder was located at site 200 feet downstream at same datum. Water-stage recorder at Oostanaula River at Fifth Avenue in Rome used as auxiliary gage since 1963.

REMARKS.--Records good. Flow regulated by Allatoona Reservoir since December 1949 and by Carters Lake and Carters re-regulation Reservoir since November 1974 (See "Lakes and Reservoirs in Mobile River Basin", stations 02381400, 02382400 and 02393500).

AVERAGE DISCHARGE.--68 years (water years 1897-1903, 1929-31, 1938-58, 1963-current year), 6,739 ft³/s, 22.65 in/yr, unadjusted.

EXTREMES OUTSIDE PERIOD OF RECORD.--Maximum stage known since at least 1834, 40.3 feet at site and datum at Rome, equivalent to about 43 feet at present site, from gage-height relation, Apr. 1, 1886, discharge, 100,000 ft³/s, from rating curve extended above 63,000 ft³/s on basis of peak flow at Gadsden, AL.

**MOBILE RIVER BASIN
1998 and 1999 Water Years**

02397000 COOSA RIVER NEAR ROME, GA--continued

LOCATION.--Lat 34°12'01", long 85°15'24", Floyd County, Hydrologic Unit 03150105, on left bank attached to left lock wall of Mayo's Bar lock near upstream end, 1.5 miles upstream from Webb Creek, 6.0 miles southwest of Rome, 7.5 miles downstream from confluence of Oostanaula and Etowah Rivers, and at mile 278.6.

DRAINAGE AREA.--4,040 mi², approximately.

WATER-QUALITY RECORDS

PERIOD OF RECORD.—March 1968 to current year.

PERIOD OF DAILY RECORD.—

WATER TEMPERATURE: February 1986 to September 1987, April 1988 to current year.

INSTRUMENTATION.—Water quality monitor.

EXTREMES FOR PERIOD OF DAILY RECORD.—

WATER TEMPERATURE: Maximum recorded, 31.0 °C, July 19, 21, 1986; minimum recorded, 1.5 °C, February 5, 1996.

EXTREMES FOR 1998 WATER YEAR.—

WATER TEMPERATURE: Maximum, 28.5 °C, Jul. 20, 21; minimum, 5.5 °C, Feb. 7.

EXTREMES FOR 1999 WATER YEAR.—

WATER TEMPERATURE: Maximum, 28.5 °C, Aug. 2, 3; minimum, 4.5 °C, Jan. 5.

STATION NUMBER 02397000 COOSA RIVER NEAR ROME, GA STREAM SOURCE AGENCY USGS
 LATITUDE 341201 LONGITUDE 0851524 DRAINAGE AREA 4040 DATUM 553.05 STATE 13 COUNTY 115
 PROVISIONAL DATA SUBJECT TO REVISION

DISCHARGE, CUBIC FEET PER SECOND, WATER YEAR OCTOBER 1998 TO SEPTEMBER 1999
 DAILY MEAN VALUES

DAY	OCT	NOV	DEC	JAN	FEB	MAR	APR	MAY	JUN	JUL	AUG	SEP
1	2650	1260	3000	5930	15400	8190	4730	4370	2470	5550	2430	1810
2	2430	1300	3660	5410	20000	8720	5070	4080	2740	6710	2230	1790
3	2440	2130	3410	4870	18800	8430	4660	3520	3470	6900	2980	1420
4	2250	1690	3320	5560	17900	9740	3970	3390	4180	4970	2490	1440
5	1530	1770	3450	6600	15300	10500	3590	2880	4010	4530	2290	1120
6	2060	1530	1690	6090	9460	9130	4070	7750	3090	4630	2720	1190
7	2380	1530	1990	5960	7900	7080	5720	15400	3060	5480	2050	1420
8	2630	1510	3020	5240	7450	6590	5810	17800	3790	5340	1790	2030
9	2510	1230	2720	4900	9860	6850	5470	17800	3110	5250	1760	1700
10	2470	1790	3550	4280	11000	6450	5140	16500	2970	4510	2370	1420
11	1390	2040	3390	5050	10900	6680	4150	10900	3630	7070	2070	1200
12	1270	2800	3060	5780	7570	6380	3690	7990	2390	20500	2340	2100
13	2180	2800	2280	5470	6690	6060	3550	6960	2370	20600	2480	1880
14	1870	1930	2680	5520	5500	6030	3290	6260	2390	16800	2990	1840
15	1830	2210	4200	8530	5380	6870	4720	6000	2670	10400	3390	1750
16	1950	2510	3980	11200	5370	7180	5170	5530	3090	8110	2140	1710
17	1930	3360	3600	10800	6180	7110	4800	5060	3500	7750	2600	1340
18	1180	3330	4040	9440	10600	6850	4030	5600	3390	6300	2660	1150
19	1130	3100	3250	7730	13000	5920	3480	5380	3760	6330	2930	1030
20	1880	2760	3050	7590	11000	5100	3520	5100	2480	7130	3320	990
21	2110	2330	3050	6400	7640	4550	3750	4670	2310	5540	2370	1290
22	2090	1650	3700	6240	6590	5040	3520	4000	3250	5180	1380	1020
23	1200	2240	4150	10500	6670	4970	3230	2930	3020	5040	1220	1230
24	1130	2710	8390	19600	6090	4540	3310	3060	3560	5150	2460	1410
25	1140	2580	11300	18500	5700	4150	2910	3780	3940	3860	3650	1210
26	1160	2480	10600	16800	5300	4670	3010	3790	3580	4850	2710	1050
27	2420	2800	8230	15400	4960	4720	3090	3730	3080	5050	2930	1020
28	2690	2970	6540	10800	6210	4400	4070	3360	6470	5050	3560	1250
29	3060	1430	7520	8200	---	4100	4830	3290	8000	4400	2260	1270
30	3020	1720	7150	7230	---	3690	4450	2670	6150	3430	1630	1230
31	2370	---	6660	8280	---	3220	---	2530	---	3560	2420	---

TOTAL	62350	65490	140630	259900	264420	193910	124800	196080	105920	215970	76620	42310
MEAN	2011	2183	4536	8384	9444	6255	4160	6325	3531	6967	2472	1410
MAX	3060	3360	11300	19600	20000	10500	5810	17800	8000	20600	3650	2100
MIN	1130	1230	1690	4280	4960	3220	2910	2530	2310	3430	1220	990
CFSM	.50	.54	1.12	2.08	2.34	1.55	1.03	1.57	.87	1.72	.61	.35
IN.	.57	.60	1.29	2.39	2.43	1.79	1.15	1.81	.98	1.99	.71	.39

STATISTICS OF MONTHLY MEAN DATA FOR WATER YEARS 1950 - 1999, BY WATER YEAR (WY)

MEAN	3599	4848	6696	9516	10710	12450	10670	7456	4724	4106	3415	3107
MAX	15440	14130	18640	20980	31130	29220	25730	16880	13970	10450	9360	9956
(WY)	1990	1978	1984	1974	1990	1990	1964	1964	1973	1989	1984	1950
MIN	1472	1665	1881	1922	3798	3115	2544	1651	1513	1341	1333	1410
(WY)	1989	1988	1988	1956	1988	1988	1986	1988	1988	1986	1986	1999

SUMMARY STATISTICS FOR 1998 CALENDAR YEAR FOR 1999 WATER YEAR WATER YEARS 1950 - 1999

ANNUAL TOTAL	2879120	1748400	
ANNUAL MEAN	7888	4790	6766
HIGHEST ANNUAL MEAN			11880 1990
LOWEST ANNUAL MEAN			2509 1988
HIGHEST DAILY MEAN	41300 Feb 5	20600 Jul 13	64200 Mar 18 1990
LOWEST DAILY MEAN	1130 Oct 19	990 Sep 20	907 Oct 14 1988
ANNUAL SEVEN-DAY MINIMUM	1530 Oct 19	1150 Sep 17	1020 Oct 2 1986
INSTANTANEOUS PEAK FLOW		23900 Jul 12	65500 Mar 18 1990
INSTANTANEOUS PEAK STAGE		21.71 Jul 12	35.97 Mar 18 1990
ANNUAL RUNOFF (CFSM)	1.95	1.19	1.67
ANNUAL RUNOFF (INCHES)	26.51	16.10	22.75
10 PERCENT EXCEEDS	17300	8610	14800
50 PERCENT EXCEEDS	4230	3630	4450
90 PERCENT EXCEEDS	1930	1520	1970

STATISTICS COMPUTED BY: gabailey

DATE: 07/10/2000 AT: 12:13:05

STATION NUMBER 02397000 COOSA RIVER NEAR ROME, GA STREAM SOURCE AGENCY USGS
 LATITUDE 341201 LONGITUDE 0851524 DRAINAGE AREA 4040.00 DATUM 553.05 STATE 13 COUNTY 115

TEMPERATURE, WATER (DEG. C), WATER YEAR OCTOBER 1997 TO SEPTEMBER 1998

DAY	MAX	MIN	MAX	MIN	MAX	MIN	MAX	MIN	MAX	MIN	MAX	MIN
	OCTOBER		NOVEMBER		DECEMBER		JANUARY		FEBRUARY		MARCH	
1	21.0	20.5	16.5	16.5	12.5	12.5	7.5	6.5	9.0	8.5	13.0	12.5
2	21.0	20.0	16.5	16.0	12.5	11.0	7.5	6.0	9.0	8.5	13.0	12.0
3	21.0	20.0	16.5	15.5	11.5	11.0	7.5	6.5	9.0	9.0	12.0	10.5
4	21.0	20.0	15.5	15.0	11.5	11.5	8.5	7.5	9.0	7.5	10.5	10.0
5	21.0	20.5	15.5	15.0	11.5	10.5	10.5	8.5	7.5	6.5	10.5	10.0
6	21.5	20.5	15.5	15.0	10.5	9.5	11.0	9.5	6.5	6.0	10.5	10.0
7	22.5	21.0	15.0	15.0	9.5	8.5	12.5	10.0	6.0	5.5	11.0	10.5
8	22.0	21.5	15.0	14.0	8.5	7.5	13.5	12.0	7.0	6.0	11.5	11.0
9	22.0	21.5	14.5	13.5	8.5	7.5	13.5	12.0	8.0	7.0	12.0	11.5
10	22.5	22.0	14.5	13.0	9.5	8.5	12.0	11.0	8.0	8.0	12.0	10.5
11	22.5	21.5	14.0	13.5	10.0	9.5	11.0	10.0	9.0	8.0	10.5	9.5
12	22.5	22.0	14.0	12.5	9.5	9.0	10.0	9.5	9.0	9.0	9.5	8.5
13	22.0	22.0	13.5	12.5	9.0	8.5	10.0	9.5	9.0	8.5	8.5	8.0
14	22.0	21.0	13.5	12.5	8.5	8.0	10.0	9.5	8.5	8.5	9.5	8.5
15	21.0	19.0	13.0	12.0	8.0	7.5	10.0	9.0	8.5	8.5	10.5	9.5
16	19.5	18.5	12.0	10.5	8.0	7.0	9.5	9.0	9.0	8.5	11.0	10.5
17	18.5	18.0	10.5	10.0	8.0	7.5	9.0	9.0	9.5	9.0	11.0	10.5
18	18.0	17.5	10.0	9.0	8.5	7.5	9.0	8.5	10.0	9.5	10.5	10.5
19	17.5	17.0	9.5	9.5	8.0	7.5	9.0	8.5	9.5	9.5	11.5	10.5
20	17.5	17.0	9.5	9.0	8.5	8.0	9.0	8.0	10.0	9.5	12.5	11.5
21	17.5	17.0	10.5	9.5	8.5	8.5	8.5	8.0	10.0	9.5	12.0	11.5
22	17.5	17.0	12.0	10.5	9.5	8.5	8.5	8.5	10.5	10.0	12.0	11.0
23	17.5	16.0	12.0	12.0	10.0	9.5	9.0	8.5	10.0	9.5	11.5	11.0
24	17.0	16.0	12.0	11.0	10.0	10.0	9.5	9.0	10.0	9.0	11.5	11.0
25	17.5	16.5	11.5	10.0	10.0	10.0	9.5	9.0	10.5	9.5	12.0	11.5
26	17.5	17.0	11.0	10.0	10.0	9.5	9.0	8.5	10.5	10.0	13.5	12.0
27	17.5	16.5	11.0	10.5	9.5	9.0	9.0	8.5	12.0	10.5	14.5	13.5
28	16.5	15.0	11.5	10.5	9.0	8.0	9.0	8.5	13.0	12.0	15.5	14.0
29	15.5	14.0	11.5	11.0	8.0	7.5	9.0	8.5	---	---	17.0	15.5
30	16.5	15.5	12.5	11.0	7.5	7.0	9.0	8.5	---	---	18.0	16.5
31	16.5	16.5	---	---	7.5	6.5	9.0	8.5	---	---	18.5	17.5
MONTH	22.5	14.0	16.5	9.0	12.5	6.5	13.5	6.0	13.0	5.5	18.5	8.0

STATION NUMBER 02397000 COOSA RIVER NEAR ROME, GA STREAM SOURCE AGENCY USGS
 LATITUDE 341201 LONGITUDE 0851524 DRAINAGE AREA 4040.00 DATUM 553.05 STATE 13 COUNTY 115

TEMPERATURE, WATER (DEG. C), WATER YEAR OCTOBER 1997 TO SEPTEMBER 1998

DAY	MAX	MIN	MAX	MIN	MAX	MIN	MAX	MIN	MAX	MIN	MAX	MIN
	APRIL		MAY		JUNE		JULY		AUGUST		SEPTEMBER	
1	18.5	17.5	16.0	15.5	24.5	23.0	26.0	23.5	26.5	25.0	---	---
2	18.0	17.0	17.0	16.0	25.0	24.0	25.5	23.0	26.5	26.0	---	---
3	17.5	16.5	16.5	16.0	24.5	22.0	26.0	23.5	26.5	26.0	---	---
4	---	---	16.5	16.0	24.5	21.0	26.0	23.0	26.5	25.5	---	---
5	---	---	17.0	16.0	23.0	20.5	25.5	24.5	26.5	24.5	---	---
6	---	---	17.0	16.5	22.0	21.5	26.5	25.5	26.5	25.5	---	---
7	---	---	17.5	17.0	22.0	21.0	27.5	26.0	26.5	25.5	27.0	26.0
8	---	---	18.0	17.0	21.5	20.5	27.5	25.5	26.5	25.5	27.0	26.0
9	16.0	15.0	18.5	17.5	21.5	19.5	26.5	24.5	26.5	26.5	26.0	24.0
10	16.0	14.0	18.5	18.0	22.0	20.5	27.0	24.5	26.5	25.5	24.5	22.5
11	14.0	13.0	18.5	17.5	22.5	21.5	27.5	25.0	26.5	25.5	23.5	22.5
12	13.5	12.5	18.0	17.5	23.0	21.5	26.5	25.5	25.5	24.0	23.5	22.5
13	14.0	13.0	18.5	18.0	23.5	22.5	26.0	25.5	26.0	24.0	24.0	23.5
14	14.5	14.0	20.0	18.0	24.0	23.0	26.0	25.5	26.0	25.0	24.5	23.5
15	15.0	14.0	20.5	19.5	25.0	24.0	26.0	25.5	25.5	24.5	25.5	24.0
16	15.5	14.5	21.0	19.5	25.0	24.5	26.0	25.0	25.5	25.0	25.5	25.0
17	17.0	15.5	22.0	20.5	24.5	23.0	26.0	24.5	25.5	25.0	26.0	25.0
18	17.0	16.5	22.0	21.5	24.5	23.5	26.5	25.0	26.5	25.5	26.0	25.5
19	17.0	16.0	22.5	21.5	24.5	23.0	28.0	26.5	27.0	26.0	26.0	25.5
20	16.5	15.5	22.0	21.0	23.5	22.0	28.5	27.5	27.0	26.5	26.0	25.0
21	16.0	15.5	22.0	21.0	24.5	23.0	28.5	27.0	26.5	24.5	25.0	24.5
22	15.5	15.0	22.0	20.5	25.5	24.5	27.5	24.5	25.5	24.5	25.5	24.5
23	15.5	15.0	22.0	21.0	26.0	25.5	27.0	25.5	26.0	25.5	26.0	25.0
24	15.0	14.5	23.0	22.0	25.5	24.0	27.0	26.5	26.5	26.0	26.0	25.0
25	15.0	15.0	23.5	22.5	25.5	24.0	27.0	26.0	26.5	25.5	25.5	24.5
26	15.5	15.0	23.5	22.5	26.0	24.5	26.5	25.5	26.5	25.5	25.0	24.0
27	15.5	15.5	22.5	21.0	26.5	25.0	26.5	25.0	27.0	26.0	25.5	25.0
28	16.0	15.0	23.5	21.0	26.5	25.0	25.5	23.5	27.5	26.0	25.5	24.5
29	15.5	15.0	23.5	21.5	28.0	26.5	25.5	24.5	27.5	25.5	24.5	24.0
30	15.5	15.5	23.0	20.5	28.0	25.5	26.0	25.5	---	---	25.0	24.5
31	---	---	23.5	22.0	---	---	26.5	26.0	---	---	---	---
MONTH	---	---	23.5	15.5	28.0	19.5	28.5	23.0	---	---	---	---

STATION NUMBER 02397000 COOSA RIVER NEAR ROME, GA STREAM SOURCE AGENCY USGS
 LATITUDE 341201 LONGITUDE 0851524 DRAINAGE AREA 4040.00 DATUM 553.05 STATE 13 COUNTY 115

TEMPERATURE, WATER (DEG. C), WATER YEAR OCTOBER 1998 TO SEPTEMBER 1999

DAY	MAX	MIN	MAX	MIN	MAX	MIN	MAX	MIN	MAX	MIN	MAX	MIN
	OCTOBER		NOVEMBER		DECEMBER		JANUARY		FEBRUARY		MARCH	
1	25.0	24.0	19.5	18.0	14.5	13.5	9.0	8.0	10.5	9.5	11.5	10.5
2	25.0	24.0	18.5	18.0	14.5	14.5	8.5	8.0	9.5	9.5	11.5	11.0
3	24.5	23.5	18.5	18.0	15.0	14.5	8.0	7.0	10.0	9.5	11.5	10.5
4	---	---	18.5	17.0	15.0	14.5	7.0	5.5	10.5	10.0	10.5	10.0
5	---	---	17.5	16.0	15.5	15.0	5.5	4.5	11.0	10.0	10.0	9.0
6	---	---	16.0	14.0	15.5	15.5	6.0	5.0	11.0	10.0	10.0	9.5
7	---	---	14.0	13.5	17.0	15.5	7.0	5.0	11.5	10.5	10.5	9.5
8	---	---	13.5	13.0	17.0	16.5	8.0	6.5	12.0	11.0	10.0	9.5
9	23.5	21.5	13.5	13.0	16.5	15.5	8.5	7.5	12.0	10.5	10.0	8.5
10	22.0	21.0	15.0	13.5	15.5	14.0	7.5	6.5	12.0	11.0	9.5	8.5
11	21.5	21.0	15.5	15.0	14.0	13.5	6.5	6.0	13.0	11.0	9.5	9.0
12	21.5	21.0	15.5	15.0	13.5	13.0	7.0	6.0	13.5	13.0	10.0	9.0
13	21.0	20.5	15.5	14.5	13.0	12.0	8.0	7.0	13.0	11.5	10.0	9.5
14	21.5	20.0	15.0	14.5	12.0	12.0	9.5	8.0	11.5	10.0	9.5	9.0
15	21.5	20.0	15.0	14.5	12.0	11.0	9.5	9.5	10.0	9.5	10.0	9.0
16	21.0	19.5	15.0	15.0	11.0	10.5	9.5	9.0	9.5	9.0	10.5	9.0
17	21.0	19.5	15.5	15.0	10.5	10.0	9.0	8.5	10.5	9.5	11.0	10.0
18	21.0	20.0	15.5	14.5	10.0	9.5	9.0	8.5	11.0	10.5	11.5	11.0
19	21.5	20.5	15.0	14.5	10.5	10.0	9.5	9.0	11.0	11.0	12.5	11.5
20	21.5	21.0	15.5	14.5	11.0	10.0	9.5	9.0	11.0	10.5	13.0	12.5
21	21.5	20.5	15.5	14.0	12.0	11.0	10.5	9.5	10.5	10.0	13.5	13.0
22	21.0	18.5	14.0	13.0	13.0	12.0	12.0	10.5	10.0	9.0	14.0	13.0
23	19.5	18.0	13.5	13.0	12.5	10.0	13.5	12.0	9.5	8.5	14.0	13.0
24	18.0	17.0	15.0	13.5	10.0	8.0	13.5	13.0	8.5	8.5	14.0	13.5
25	17.0	16.0	15.5	15.0	8.0	7.0	13.0	12.5	8.5	8.5	14.0	13.5
26	16.5	15.5	15.5	15.0	7.5	6.5	12.5	11.5	10.0	8.5	13.5	13.0
27	16.5	15.5	15.0	14.0	7.5	6.5	11.5	11.0	10.0	10.0	13.5	12.5
28	18.5	16.5	14.5	13.5	8.5	7.5	11.0	10.5	11.0	10.0	13.5	12.5
29	19.0	17.5	13.5	13.0	9.5	8.5	11.5	11.0	---	---	13.5	13.0
30	19.5	18.5	13.5	13.0	9.5	8.5	11.5	11.5	---	---	14.0	13.5
31	20.0	18.5	---	---	9.0	8.5	11.5	10.5	---	---	14.0	13.5
MONTH	---	---	19.5	13.0	17.0	6.5	13.5	4.5	13.5	8.5	14.0	8.5

STATION NUMBER 02397000 COOSA RIVER NEAR ROME, GA STREAM SOURCE AGENCY USGS
 LATITUDE 341201 LONGITUDE 0851524 DRAINAGE AREA 4040.00 DATUM 553.05 STATE 13 COUNTY 115

TEMPERATURE, WATER (DEG. C), WATER YEAR OCTOBER 1998 TO SEPTEMBER 1999

DAY	MAX	MIN	MAX	MIN	MAX	MIN	MAX	MIN	MAX	MIN	MAX	MIN
	APRIL		MAY		JUNE		JULY		AUGUST		SEPTEMBER	
1	14.5	13.5	17.0	16.0	22.5	21.5	23.5	21.0	27.0	26.0	25.5	25.0
2	15.5	14.5	17.5	16.5	23.0	22.5	23.0	21.0	28.5	27.0	25.5	25.0
3	17.5	15.5	18.0	17.5	23.0	22.5	22.5	20.5	28.5	26.5	26.0	24.5
4	18.5	17.5	19.5	18.0	23.0	22.0	24.0	22.5	27.5	25.5	25.5	24.5
5	19.5	18.5	19.5	19.5	22.5	22.0	25.5	24.0	27.0	25.5	26.5	24.5
6	20.0	19.0	19.5	18.0	23.5	22.5	26.0	25.5	27.0	25.5	26.5	25.5
7	19.0	18.5	18.0	17.5	24.5	23.5	26.0	23.0	27.0	25.5	27.0	25.5
8	18.5	18.0	18.0	17.5	25.0	24.5	24.5	23.0	27.0	25.5	26.5	25.5
9	19.0	18.5	18.5	17.5	25.5	25.0	25.0	24.0	27.5	26.0	26.5	25.0
10	19.5	18.5	19.0	18.5	25.5	24.5	25.5	24.5	27.5	26.0	25.5	24.5
11	20.5	19.5	19.5	18.5	25.5	23.0	25.5	23.5	27.5	27.0	24.5	24.0
12	20.5	20.0	19.5	19.0	23.0	23.0	23.5	22.5	28.0	26.5	24.5	23.5
13	20.0	19.0	19.0	18.5	23.5	23.0	22.5	22.0	28.0	27.0	24.5	24.0
14	19.0	18.5	19.5	18.5	24.5	23.5	22.0	21.5	28.0	26.5	24.5	24.0
15	18.5	17.5	19.5	19.0	24.0	23.5	22.5	21.5	28.0	26.0	24.5	23.5
16	17.5	16.5	20.0	19.0	24.0	23.0	22.5	22.0	26.5	26.0	23.5	22.5
17	17.0	16.0	21.0	19.5	23.0	22.5	22.5	21.5	27.0	26.5	23.0	22.0
18	16.0	15.0	21.0	20.5	23.0	22.5	23.0	21.5	27.0	26.5	22.5	21.5
19	15.0	14.5	21.0	20.0	23.0	22.0	23.5	22.5	27.0	26.5	22.5	21.5
20	16.5	15.0	21.0	19.5	23.0	22.5	23.5	21.5	27.0	26.0	22.0	21.5
21	17.5	16.5	20.5	20.0	23.5	23.0	25.0	22.5	26.5	25.5	22.0	21.5
22	18.5	17.5	20.5	20.0	24.0	23.0	25.0	23.0	26.5	25.5	21.5	20.5
23	19.5	18.5	21.5	20.5	24.0	23.0	25.5	23.0	26.5	25.5	21.0	19.5
24	20.5	19.5	22.5	21.5	23.5	22.0	25.5	23.5	26.0	25.0	20.5	19.5
25	20.5	19.5	22.5	21.5	22.5	22.0	25.5	24.5	25.5	23.5	21.0	19.5
26	19.5	19.0	22.5	21.0	23.0	22.0	26.5	25.0	25.0	24.5	21.0	20.0
27	19.0	18.5	21.0	20.5	24.0	23.0	26.5	26.0	25.5	25.0	22.0	21.0
28	19.0	18.5	21.0	20.5	24.0	22.5	26.5	24.0	26.0	25.0	22.5	21.5
29	19.0	17.5	21.0	20.5	23.5	21.5	26.5	24.0	26.0	25.5	23.0	22.5
30	17.5	16.5	21.5	21.0	23.5	23.0	26.0	24.5	26.5	25.5	22.5	21.0
31	---	---	22.0	21.5	---	---	26.5	25.0	26.0	25.0	---	---
MONTH	20.5	13.5	22.5	16.0	25.5	21.5	26.5	20.5	28.5	23.5	27.0	19.5