

MOBILE RIVER BASIN

02388500

OOSTANAULA RIVER NEAR ROME, GA.

Latitude: 34° 18' 02" Longitude: 85° 08' 30" Hydrologic Unit Code: 03150103

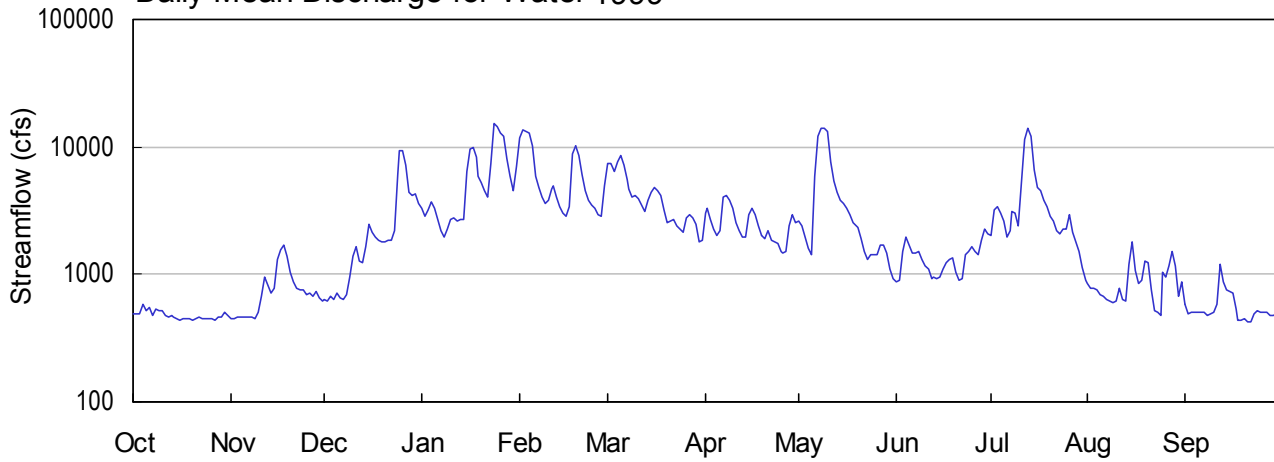
Floyd County

Drainage Area: 2120.0 mi²

Datum: 561.7 feet

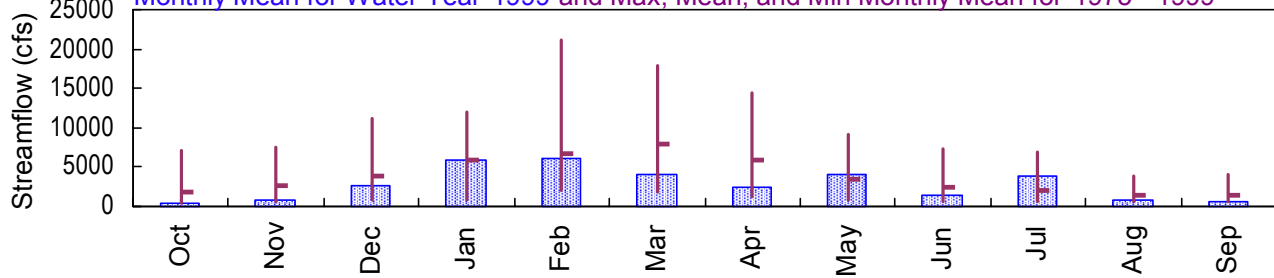
Period of Record: 1975 - 1999

Daily Mean Discharge for Water 1999

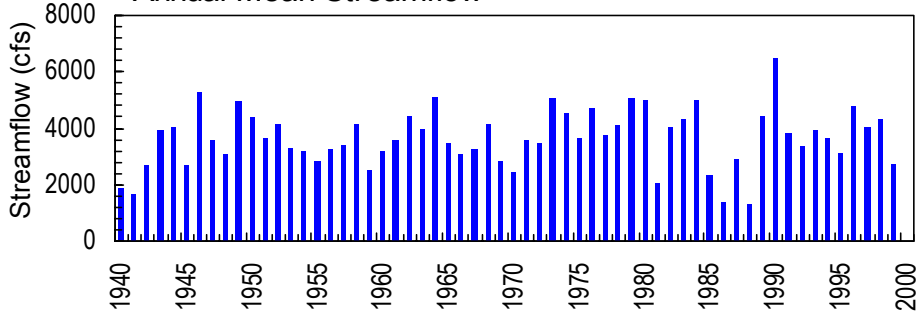


Monthly Statistics

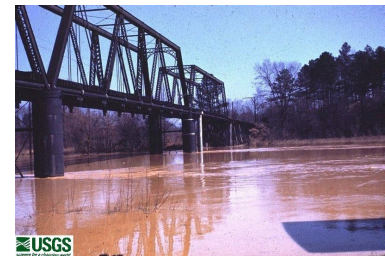
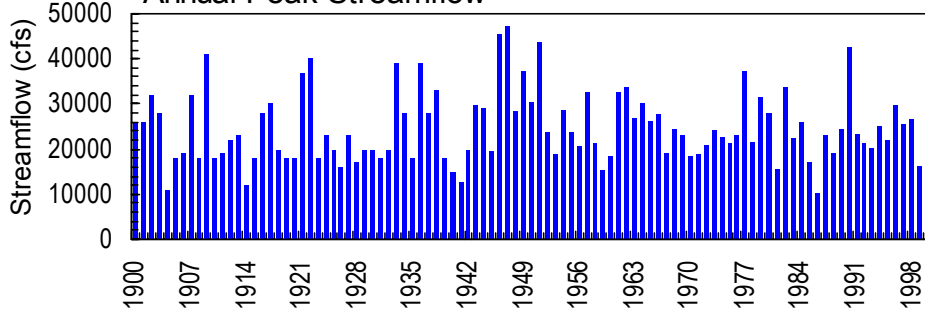
Monthly Mean for Water Year 1999 and Max, Mean, and Min Monthly Mean for 1975 - 1999



Annual Mean Streamflow



Annual Peak Streamflow



USGS

02388500 - Oostanaula River near Rome, GA

MOBILE RIVER BASIN
1999 Water Year

02388500 OOSTANAULA RIVER NEAR ROME, GA

LOCATION.--Lat 34°18'02", long 85°08'30", Floyd County, Hydrologic Unit 03150103, on left bank 1.2 miles upstream from Dry Creek, 4.5 miles north of Rome, 4.5 miles upstream from confluence with Etowah River, and 6.5 miles downstream from Armuchee Creek.

DRAINAGE AREA.--2,120 mi².

PERIOD OF RECORD.--October 1939 to current year. Gage-height records collected at site 4.2 miles downstream since 1890 are contained in reports of National Weather Service.

GAGE.--Water-stage recorder. Datum of gage is 561.70 feet above sea level. From Oct. 1, 1939, to Dec. 7, 1950, water-stage recorder was located at site 3.2 miles downstream at same datum. Since Oct. 1, 1939, auxiliary water-stage recorder has been located at Fifth Avenue Bridge, 4.2 miles downstream. Non-recording gage was located at site of auxiliary gage used as base gage for records published as Coosa River at Rome, Jan. 1, 1897, to Dec. 31, 1903.

REMARKS.--Records good, except for periods of estimated discharges, which are fair. Flow regulated by Carters Lake and Carters Re-regulation Dam since 1975 (See "Lakes and Reservoirs in Mobile River Basin," stations 02381400 and 02382400). Records of chemical analyses for the water years 1968 to 1974, are published in reports of the U.S. Geological Survey.

AVERAGE DISCHARGE.--60 years, 3,640 ft³/s, 23.32 in/yr unadjusted.

EXTREMES OUTSIDE PERIOD OF RECORD.--Maximum stage known since at least 1834, 40.3 feet in April 1886, at site of present auxiliary gage, from information by Georgia Department of Archives.

STATION NUMBER 02388500 OOSTANAULA RIVER NEAR ROME, GA. STREAM SOURCE AGENCY USGS
 LATITUDE 341802 LONGITUDE 0850830 DRAINAGE AREA 2115 DATUM 561.70 STATE 13 COUNTY 115
 PROVISIONAL DATA SUBJECT TO REVISION
 DISCHARGE, CUBIC FEET PER SECOND, WATER YEAR OCTOBER 1998 TO SEPTEMBER 1999
 DAILY MEAN VALUES

DAY	OCT	NOV	DEC	JAN	FEB	MAR	APR	MAY	JUN	JUL	AUG	SEP
1	495	453	638	3300	11800	7320	3030	2610	878	2040	857	583
2	484	450	625	2840	13600	7380	3320	2420	897	3250	782	491
3	485	468	672	3200	13200	6470	2730	1940	1510	3400	772	505
4	580	460	644	3700	13000	7540	2300	1600	1980	3010	752	505
5	522	464	711	3270	10200	8570	2030	1420	1710	2620	690	505
6	548	460	664	2660	5820	7260	2210	5850	1490	1970	675	505
7	480	463	630	2210	4740	5520	4030	12100	1460	2190	634	505
8	528	466	693	1990	4070	4610	4190	13900	1500	3090	618	477
9	516	453	952	2240	3560	4090	3820	14200	1300	3000	607	485
10	521	504	1400	2730	3870	4120	3350	13100	1170	2370	609	506
11	477	668	1660	2780	4670	3920	2510	7580	1090	5190	769	579
12	462	949	1290	2620	4980	3520	2200	5440	936	11300	637	1190
13	476	836	1250	2690	4020	3080	1990	4460	946	14100	614	884
14	460	710	1640	2720	3370	3850	1950	3810	917	12200	1190	761
15	451	779	2460	6370	3000	4350	2970	3600	941	6610	1810	738
16	443	1320	2130	9650	2860	4800	3290	3330	1090	4770	1080	708
17	446	1550	1970	9770	3360	4600	2950	2940	1240	4580	837	539
18	450	1720	1840	8390	8840	4130	2390	2560	1310	3830	896	e440
19	450	1390	1810	5920	10100	3240	2010	2420	1360	3400	1270	e440
20	442	1050	1790	5180	8680	2550	1930	2340	1050	2850	1240	e450
21	455	868	1840	4590	5990	2600	2210	1920	898	2590	764	e420
22	459	788	1870	4010	4500	2680	1870	1520	927	2220	516	e420
23	451	750	2230	7370	3800	2420	1790	1310	1410	2090	e500	e490
24	450	760	6010	15200	3520	2250	1730	1420	1520	2250	e480	e520
25	450	703	9280	14600	3280	2150	1530	1440	1630	2280	1040	e510
26	450	708	9280	13000	2920	2750	1470	1440	1530	2960	962	e500
27	432	671	7190	12000	2860	2900	1510	1680	1410	2150	1180	e500
28	469	732	4360	8010	4910	2760	2390	1690	1850	1810	1520	e470
29	459	650	4180	5910	---	2440	2900	1480	2240	1530	1150	e480
30	504	615	4340	4530	---	1790	2560	1110	2080	1140	683	e490
31	470	---	3620	7000	---	1840	---	935	---	889	865	---

TOTAL	14765	22858	79669	180450	169520	127500	75160	123565	40270	117679	26999	16596
MEAN	476	762	2570	5821	6054	4113	2505	3986	1342	3796	871	553
MAX	580	1720	9280	15200	13600	8570	4190	14200	2240	14100	1810	1190
MIN	432	450	625	1990	2860	1790	1470	935	878	889	480	420
CFSM	.23	.36	1.22	2.75	2.86	1.94	1.18	1.88	.63	1.79	.41	.26
IN.	.26	.40	1.40	3.17	2.98	2.24	1.32	2.17	.71	2.07	.47	.29

STATISTICS OF MONTHLY MEAN DATA FOR WATER YEARS 1975 - 1999, BY WATER YEAR (WY)

MEAN	1810	2593	3780	5986	6669	7827	5952	3553	2362	1955	1439	1374
MAX	7212	7437	11120	12030	21170	17900	14380	9076	7410	6904	3926	4071
(WY)	1990	1978	1983	1982	1990	1980	1977	1984	1989	1976	1984	1975
MIN	476	549	762	868	2059	1814	1217	797	544	584	592	528
(WY)	1999	1988	1988	1981	1988	1988	1986	1986	1988	1988	1986	1998

SUMMARY STATISTICS FOR 1998 CALENDAR YEAR FOR 1999 WATER YEAR WATER YEARS 1975 - 1999

ANNUAL TOTAL		1456236		995031								
ANNUAL MEAN		3990		2726						3761		
HIGHEST ANNUAL MEAN										6472		1990
LOWEST ANNUAL MEAN										1301		1988
HIGHEST DAILY MEAN		26000	Mar 10	15200	Jan 24	42300	Feb 20	1990				
LOWEST DAILY MEAN		432	Oct 27	420	Sep 21	390	Oct 6	1986				
ANNUAL SEVEN-DAY MINIMUM		448	Oct 15	448	Oct 15	428	Oct 3	1986				
INSTANTANEOUS PEAK FLOW				16300	Jan 24	42600	Feb 20	1990				
INSTANTANEOUS PEAK STAGE				21.55	Jan 24	36.47	Mar 18	1990				
ANNUAL RUNOFF (CFSM)		1.89		1.29		1.78						
ANNUAL RUNOFF (INCHES)		25.61		17.50		24.16						
10 PERCENT EXCEEDS		8750		6410		8630						
50 PERCENT EXCEEDS		1890		1790		2170						
90 PERCENT EXCEEDS		473		479		703						

STATISTICS COMPUTED BY: gabailey

DATE: 06/08/2000 AT: 12:35:45

e Estimated