

MOBILE RIVER BASIN

02388320

HEATH CREEK NEAR ARMUCHEE GA

Latitude: 34° 22' 18" Longitude: 85° 15' 50" Hydrologic Unit Code: 03150103

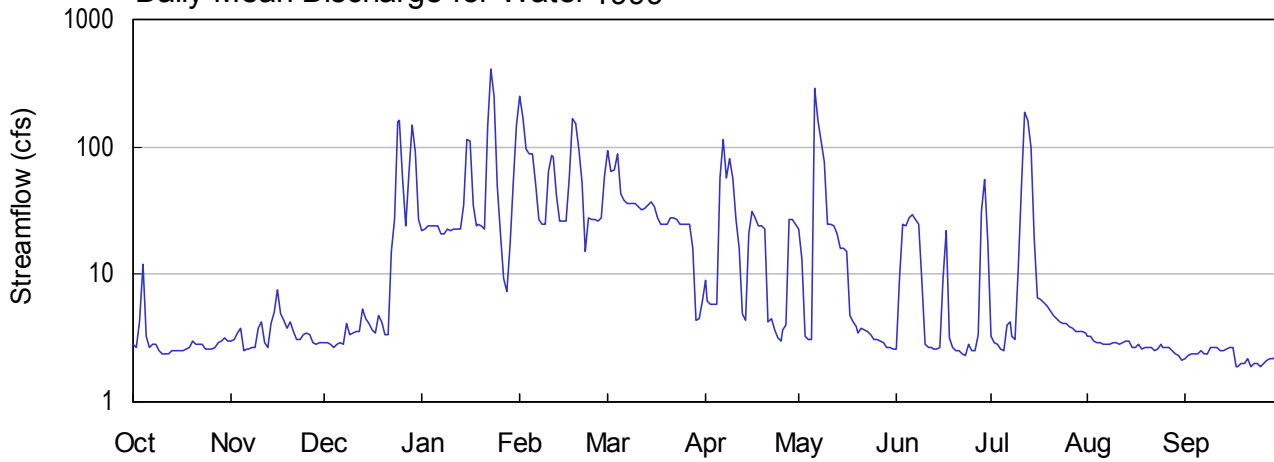
Floyd County

Drainage Area: 16.60 mi<sup>2</sup>

Datum: 637.0 feet

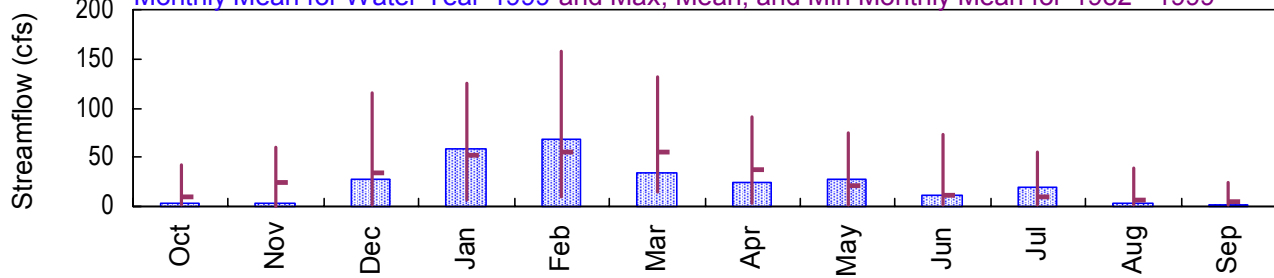
Period of Record: 1982 - 1999

Daily Mean Discharge for Water 1999

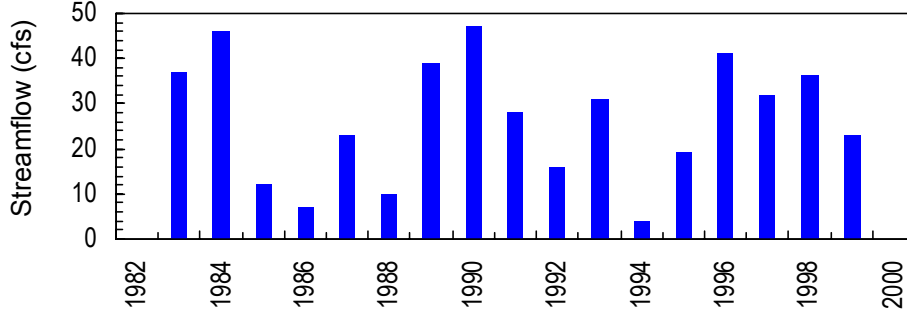


Monthly Statistics

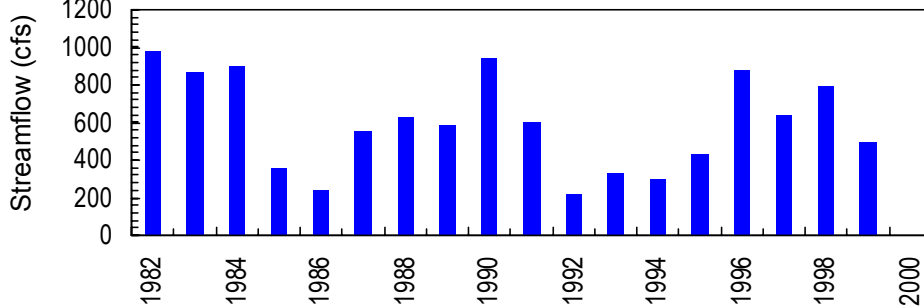
Monthly Mean for Water Year 1999 and Max, Mean, and Min Monthly Mean for 1982 - 1999



Annual Mean Streamflow



Annual Peak Streamflow



**MOBILE RIVER BASIN  
1999 Water Year**

**02388320 HEATH CREEK BELOW ROCKY MOUNTAIN DAMSITE,  
NEAR ARMUCHEE, GA**

**LOCATION.**--Lat 34°21'18", long 85°15'50", Floyd County, Hydrologic Unit 03150103, on right bank, 3.4 miles upstream from Little Armuchee Creek, 5.2 miles west of Armuchee, and 9.7 miles northwest of Rome.

**DRAINAGE AREA.**--16.6 mi<sup>2</sup>.

**PERIOD OF RECORD.**--March 1982 to current year.

**GAGE.**--Water-stage recorder. Datum of gage is 637.00 feet above sea level (levels by Georgia Power Company).

**REMARKS.**--Records fair, except those less than 5.0 ft<sup>3</sup>/s, which are poor to fair. Peak flow regulated by power company dam since November 1991.

STATION NUMBER 02388320 HEATH CREEK BEL ROCKY MTN DAMSITE NR ARMUCHEE GA STREAM SOURCE AGENCY USGS

LATITUDE 342218 LONGITUDE 0851550 DRAINAGE AREA 16.60 DATUM 637.01 STATE 13 COUNTY 115

PROVISIONAL DATA

SUBJECT TO REVISION

DISCHARGE, CUBIC FEET PER SECOND, WATER YEAR OCTOBER 1998 TO SEPTEMBER 1999

DAILY MEAN VALUES

DAY	OCT	NOV	DEC	JAN	FEB	MAR	APR	MAY	JUN	JUL	AUG	SEP
1	2.8	3.0	2.9	22	253	93	8.9	23	2.6	3.3	3.3	2.2
2	2.7	3.1	2.9	23	170	65	6.1	13	9.2	2.9	3.3	2.3
3	4.2	3.5	2.8	24	96	67	5.9	3.3	25	2.8	3.0	2.4
4	12	3.8	2.7	24	87	87	5.9	3.1	24	2.6	2.9	2.4
5	3.3	2.5	2.8	24	87	43	5.9	3.1	28	2.5	2.9	2.4
6	2.7	2.6	2.9	24	51	38	58	287	29	4.0	2.8	2.5
7	2.8	2.6	2.8	21	27	36	115	161	27	4.2	2.8	2.4
8	2.8	2.7	4.1	21	25	36	57	111	25	3.3	2.8	2.4
9	2.5	2.7	3.4	23	25	36	80	76	8.7	3.1	2.9	2.7
10	2.4	3.8	3.5	22	65	36	57	25	2.8	11	2.9	2.7
11	2.4	4.2	3.6	23	86	34	27	25	2.7	48	2.8	2.7
12	2.4	2.9	3.6	23	83	32	16	24	2.7	187	2.9	2.5
13	2.5	2.7	5.3	23	42	33	4.9	21	2.6	164	3.0	2.5
14	2.5	4.1	4.5	35	26	35	4.4	16	2.6	99	3.0	2.6
15	2.5	5.0	4.1	116	26	37	21	16	2.7	19	2.7	2.7
16	2.5	7.5	3.7	111	26	34	31	15	9.2	6.6	2.7	2.7
17	2.5	4.9	3.5	35	57	28	28	4.8	22	6.4	2.8	1.9
18	2.6	4.4	4.8	24	167	25	24	4.2	3.2	6.0	2.6	1.9
19	2.7	3.8	4.3	25	155	25	24	3.9	2.7	5.6	2.7	2.0
20	3.0	4.3	3.4	24	97	25	23	3.5	2.5	5.2	2.7	2.0
21	2.8	3.6	3.4	23	53	28	4.2	3.8	2.5	4.8	2.7	2.2
22	2.8	3.1	15	145	15	28	4.5	3.7	2.4	4.5	2.5	1.9
23	2.8	3.1	27	409	28	27	3.7	3.6	2.3	4.2	2.6	2.0
24	2.6	3.4	159	249	27	25	3.2	3.4	2.8	4.1	2.8	2.0
25	2.6	3.5	164	50	27	25	3.0	3.1	2.5	4.1	2.7	1.9
26	2.6	3.4	57	21	26	25	3.7	3.1	2.5	3.9	2.7	2.0
27	2.7	2.9	24	9.3	28	25	4.0	3.0	3.4	3.8	2.7	2.1
28	2.9	2.8	62	7.4	59	16	27	2.9	31	3.6	2.5	2.2
29	3.0	2.9	147	17	---	4.4	27	2.7	56	3.6	2.4	2.2
30	3.2	2.9	90	52	---	4.5	25	2.7	18	3.6	2.3	2.3
31	3.0	---	27	150	---	6.2	---	2.6	---	3.5	2.1	---

TOTAL	94.8	105.7	847.0	1799.7	1914	1059.1	708.3	873.5	357.6	630.2	85.5	68.7
MEAN	3.06	3.52	27.3	58.1	68.4	34.2	23.6	28.2	11.9	20.3	2.76	2.29
MAX	12	7.5	164	409	253	93	115	287	56	187	3.3	2.7
MIN	2.4	2.5	2.7	7.4	15	4.4	3.0	2.6	2.3	2.5	2.1	1.9
CFSM	.18	.21	1.65	3.50	4.12	2.06	1.42	1.70	.72	1.22	.17	.14
IN.	.21	.24	1.90	4.03	4.29	2.37	1.59	1.96	.80	1.41	.19	.15

STATISTICS OF MONTHLY MEAN DATA FOR WATER YEARS 1982 - 1999, BY WATER YEAR (WY)

MEAN	9.86	23.6	34.5	52.7	54.9	55.6	37.0	20.9	12.0	9.50	6.54	5.66
MAX	42.5	60.9	115	125	157	132	91.3	74.5	73.3	55.9	39.1	23.7
(WY)	1998	1990	1984	1996	1990	1990	1998	1984	1989	1989	1984	1989
MIN	.93	.73	1.31	6.76	9.99	14.0	2.72	1.78	1.39	1.52	1.26	1.24
(WY)	1994	1994	1994	1994	1994	1994	1995	1995	1988	1988	1988	1993

SUMMARY STATISTICS FOR 1998 CALENDAR YEAR FOR 1999 WATER YEAR WATER YEARS 1982 - 1999

ANNUAL TOTAL		11200.5		8544.1								
ANNUAL MEAN		30.7		23.4						26.6		
HIGHEST ANNUAL MEAN										47.2		1990
LOWEST ANNUAL MEAN										4.36		1994
HIGHEST DAILY MEAN		621	Apr 17	409	Jan 23	762	Feb 16	1990				
LOWEST DAILY MEAN		1.2	Jul 25	1.9	Sep 17	.19	Nov 4	1994				
ANNUAL SEVEN-DAY MINIMUM		1.4	Jul 24	2.0	Sep 17	.27	Nov 3	1994				
INSTANTANEOUS PEAK FLOW				493	Jan 23	944	Feb 16	1990				
INSTANTANEOUS PEAK STAGE				5.99	Jan 23	8.32	Feb 16	1990				
ANNUAL RUNOFF (CFSM)		1.85		1.41		1.60						
ANNUAL RUNOFF (INCHES)		25.10		19.15		21.79						
10 PERCENT EXCEEDS		77		58		62						
50 PERCENT EXCEEDS		3.3		4.1		7.3						
90 PERCENT EXCEEDS		2.2		2.5		2.0						

STATISTICS COMPUTED BY: gabailey

DATE: 07/19/2000 AT: 12:33:52