

MOBILE RIVER BASIN

02384500

CONASAUGA RIVER NEAR ETON, GA.

Latitude: 34° 49' 40" Longitude: 84° 51' 03" Hydrologic Unit Code: 03150101

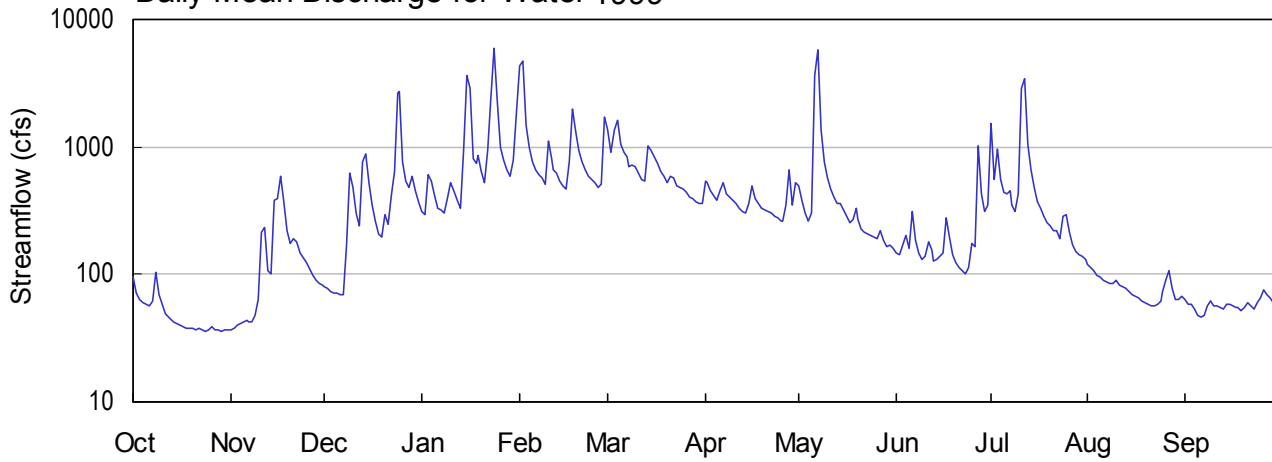
Murray County

Drainage Area: 252.00 mi²

Datum: 672.6 feet

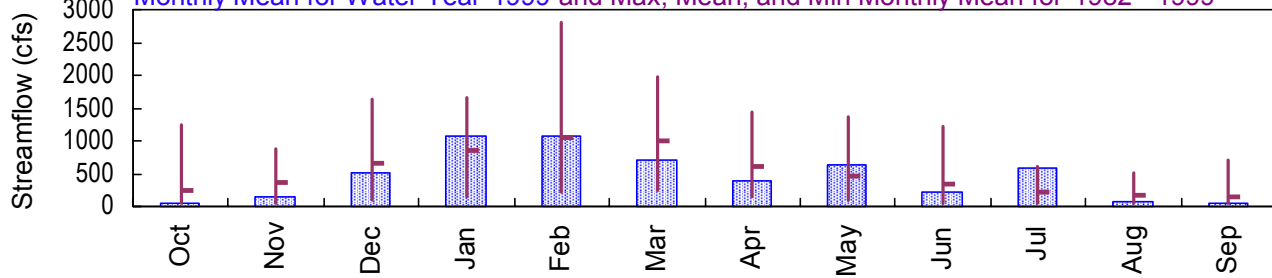
Period of Record: 1982 - 1999

Daily Mean Discharge for Water 1999

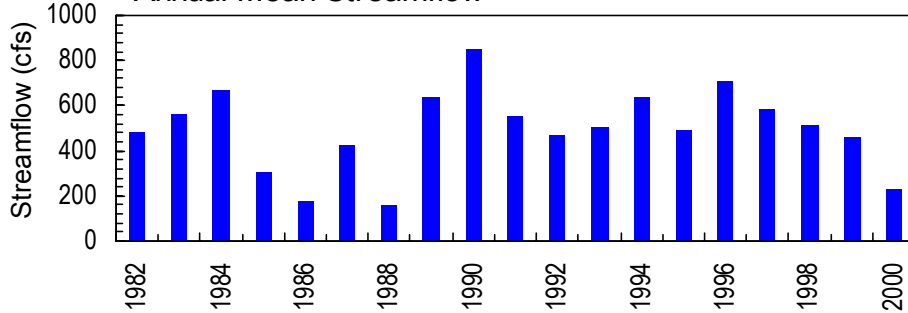


Monthly Statistics

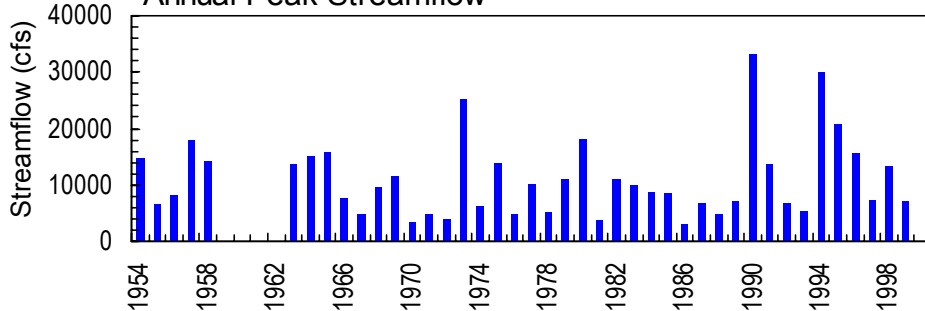
Monthly Mean for Water Year 1999 and Max, Mean, and Min Monthly Mean for 1982 - 1999



Annual Mean Streamflow



Annual Peak Streamflow



USGS science for a changing world 02384500 - Conasauga River near Eton, GA

**MOBILE RIVER BASIN
1999 Water Year**

02384500 CONASAUGA RIVER NEAR ETON, GA

LOCATION.--Lat 34°49'40", long 84°51'03", Murray-Whitfield County line, Hydrologic Unit 03150101, at downstream side of right bank pier of bridge on State Highway 286, 3.4 miles upstream from Mill Creek, 5.2 miles west of Eton, and at mile 42.7.

DRAINAGE AREA.--252 mi².

PERIOD OF RECORD.--Water years 1954-58, 1963-81 (annual maximum), October 1981 to current year.

REVISED RECORDS.--WDR GA-94-1: 1973 (M), 1990 (M).

GAGE.--Water-stage recorder. Datum of gage is 672.64 feet above sea level. From June 26, 1953, to September 30, 1958, and August 16, 1962 to September 30, 1981, crest-stage gage at site 75 feet downstream at datum 3.00 feet higher.

REMARKS.--Records good, except for period of estimated discharges, which are fair. Since May 1997, flow affected at times by off-stream reservoir used to supplement flow for withdrawals by City of Dalton.

PEAK DISCHARGES FOR CURRENT YEAR.--Peak discharges greater than a base discharge of 3,800 ft³/s, and maximum (*):

DATE	TIME	DISCHARGE (ft ³ /s)	GAGE HEIGHT (ft)
Dec. 25	0400	3,830	11.18
Jan. 16	0200	4,840	12.03
Jan. 24	1300	6,740	13.08
Feb. 2	0400	5,830	12.64
May 7	0400	6,990*	13.20*
Jul. 12	0300	4,800	12.00

STATION NUMBER 02384500 CONASAUGA RIVER NEAR ETON, GA. STREAM SOURCE AGENCY USGS
 LATITUDE 344940 LONGITUDE 0845103 DRAINAGE AREA 252.00 DATUM 672.64 STATE 13 COUNTY 213
 PROVISIONAL DATA SUBJECT TO REVISION
 DISCHARGE, CUBIC FEET PER SECOND, WATER YEAR OCTOBER 1998 TO SEPTEMBER 1999
 DAILY MEAN VALUES

DAY	OCT	NOV	DEC	JAN	FEB	MAR	APR	MAY	JUN	JUL	AUG	SEP
1	95	37	79	313	4350	1360	541	501	146	1550	121	63
2	71	38	77	290	4730	900	521	381	142	560	113	59
3	63	40	74	613	1490	1350	451	306	168	963	106	58
4	60	41	71	537	995	1640	412	261	200	557	99	54
5	59	43	71	418	770	1040	382	300	161	440	95	48
6	57	44	69	333	656	916	453	3650	314	425	91	46
7	62	43	70	317	606	821	522	5760	187	458	87	47
8	103	43	172	299	576	709	434	1350	146	349	84	56
9	70	47	620	391	508	715	410	766	131	312	85	61
10	59	64	482	523	1120	700	386	579	139	427	91	57
11	49	215	304	451	802	616	360	472	180	2910	83	56
12	46	235	237	379	664	562	330	401	154	3390	80	55
13	44	107	771	331	625	539	311	363	128	1060	77	54
14	42	102	885	950	539	1020	306	361	130	652	73	58
15	41	384	522	3660	496	946	356	318	138	482	70	59
16	40	393	345	2870	466	833	497	283	146	375	67	56
17	39	597	265	817	768	734	390	257	275	332	65	55
18	38	373	210	743	2000	650	357	267	194	284	62	55
19	38	221	199	853	1320	582	335	333	141	258	60	52
20	38	176	292	640	941	528	321	266	122	240	59	55
21	37	190	245	518	762	581	310	224	112	218	57	60
22	38	178	417	943	655	574	304	213	107	223	56	57
23	37	147	635	2420	588	491	284	207	102	188	58	54
24	36	134	2630	6010	553	476	274	202	113	282	61	60
25	37	124	2740	2260	519	471	263	194	177	292	73	e65
26	39	111	770	996	487	438	263	191	163	211	91	e75
27	37	99	539	782	514	410	351	219	1020	169	106	e70
28	37	91	476	666	1720	393	659	183	424	150	78	e65
29	36	85	581	587	---	366	353	165	315	143	64	60
30	37	82	456	783	---	363	527	168	354	138	64	97
31	37	---	369	1880	---	364	---	160	---	132	67	---

TOTAL	1522	4484	15673	33573	30220	22088	11663	19301	6229	18170	2443	1767
MEAN	49.1	149	506	1083	1079	713	389	623	208	586	78.8	58.9
MAX	103	597	2740	6010	4730	1640	659	5760	1020	3390	121	97
MIN	36	37	69	290	466	363	263	160	102	132	56	46
CFSM	.19	.59	2.01	4.30	4.28	2.83	1.54	2.47	.82	2.33	.31	.23
IN.	.22	.66	2.31	4.96	4.46	3.26	1.72	2.85	.92	2.68	.36	.26

STATISTICS OF MONTHLY MEAN DATA FOR WATER YEARS 1982 - 1999, BY WATER YEAR (WY)

MEAN	234	375	657	863	1060	991	615	466	341	230	162	146
MAX	1239	877	1643	1653	2803	1977	1438	1360	1222	611	523	699
(WY)	1990	1990	1983	1996	1990	1994	1998	1984	1989	1994	1994	1989
MIN	40.6	56.7	101	153	214	244	146	108	46.6	51.3	51.5	40.2
(WY)	1994	1988	1988	1986	1988	1988	1986	1986	1988	1988	1987	1987

SUMMARY STATISTICS FOR 1998 CALENDAR YEAR FOR 1999 WATER YEAR WATER YEARS 1982 - 1999

ANNUAL TOTAL	191153	167133		
ANNUAL MEAN	524	458	509	
HIGHEST ANNUAL MEAN			848	1990
LOWEST ANNUAL MEAN			158	1988
HIGHEST DAILY MEAN	10400	Apr 20	6010	Jan 24
LOWEST DAILY MEAN	36	Oct 24	36	Oct 24
ANNUAL SEVEN-DAY MINIMUM	37	Oct 23	37	Oct 23
INSTANTANEOUS PEAK FLOW			6990	May 7
INSTANTANEOUS PEAK STAGE			13.20	May 7
INSTANTANEOUS LOW FLOW			36	Oct 24
ANNUAL RUNOFF (CFSM)	2.08		1.82	
ANNUAL RUNOFF (INCHES)	28.22		24.67	
10 PERCENT EXCEEDS	1080		906	1020
50 PERCENT EXCEEDS	228		267	254
90 PERCENT EXCEEDS	47		54	66

STATISTICS COMPUTED BY: cgsomer

DATE: 05/30/2000 AT: 11:09:10

e Estimated