

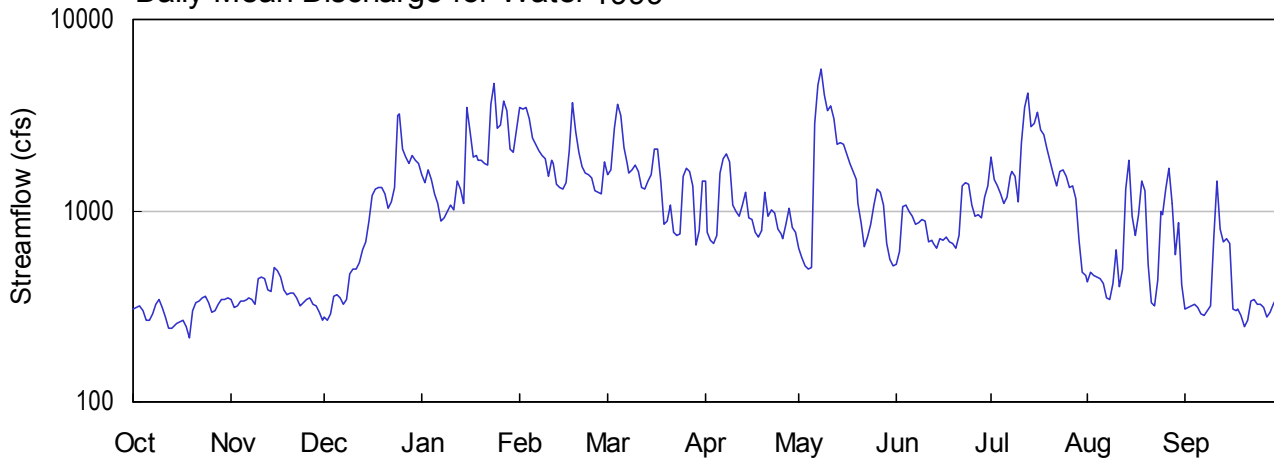
MOBILE RIVER BASIN

02383500

COOSAWATTEE RIVER NEAR PINE CHAPEL, GA.

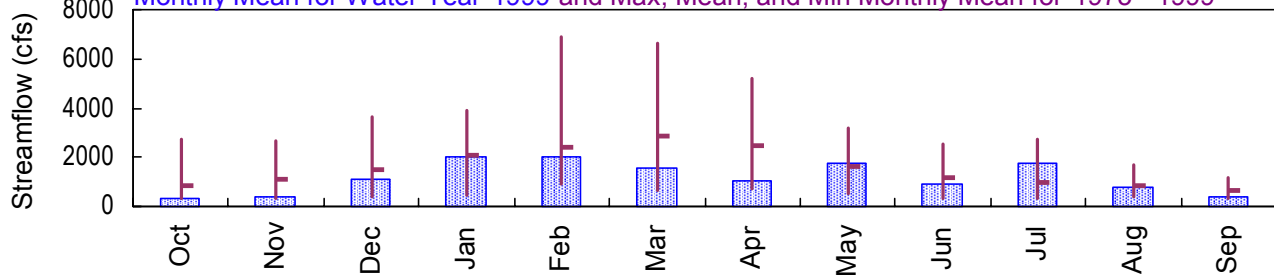
Latitude: 34° 33' 51" Longitude: 84° 49' 59" Hydrologic Unit Code: 03150102 Gordon County  
Drainage Area: 831.00 mi<sup>2</sup> Datum: 616.1 feet Period of Record: 1975 - 1999

Daily Mean Discharge for Water 1999

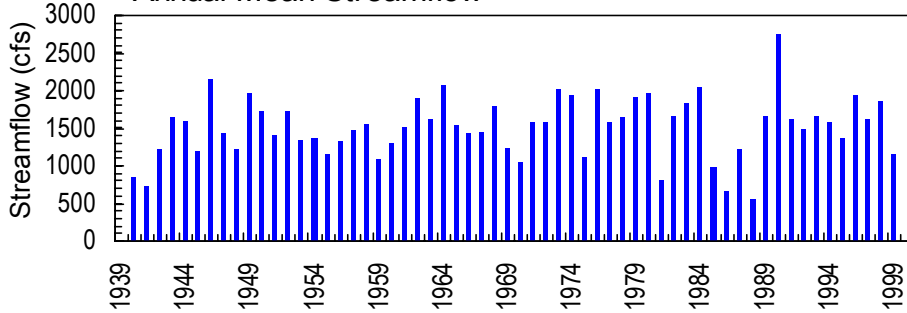


Monthly Statistics

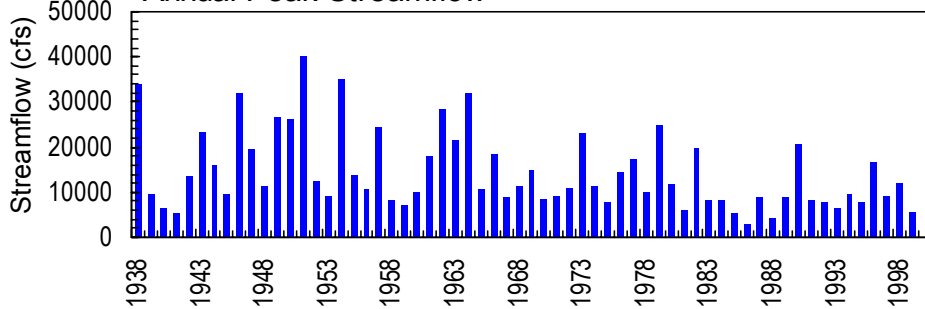
Monthly Mean for Water Year 1999 and Max, Mean, and Min Monthly Mean for 1975 - 1999



Annual Mean Streamflow



Annual Peak Streamflow



**MOBILE RIVER BASIN**  
**1999 Water Year**

**02383500 COOSAWATTEE RIVER NEAR PINE CHAPEL, GA**

**LOCATION.**--Lat 34°33'51", long 84°49'59", Gordon County, Hydrologic Unit 03150102, on right bank at downstream side of Owens Bridge on Owens Gin Road, 1.4 miles downstream from Sallacoa Creek, 8.7 miles upstream from confluence with Conasauga River, and 2.4 miles east of Pine Chapel.

**DRAINAGE AREA.**--831 mi<sup>2</sup>.

**PERIOD OF RECORD.**--October 1938 to current year. Prior to October 1976, published as Coosawattee River at Pine Chapel, Ga. Monthly discharge only for October to November 1938, published in WSP 1304.

**REVISED RECORDS.**--WDR GA-80-1: Drainage area.

**GAGE.**--Water-stage recorder. Datum of gage is 616.16 above feet sea level (levels by U.S. Army Corps of Engineers). Since October 1, 1976, auxiliary water-stage recorder at highway bridge 2.2 miles downstream. Prior to Feb. 23, 1940, non-recording gage was located at current auxiliary gage site and same datum. From Feb. 23, 1940, to April 8, 1975, water-station recorder was located at current auxiliary gage site and same datum. From Feb. 23, 1940, to April 8, 1975, auxiliary water-stage recorder was located at current gage site. From April 9, 1975, to Sept. 30, 1976, water-stage recorder on Oostanaula River at Resaca used as auxiliary gage, due to bridge construction.

**REMARKS.**--Records good. Flow regulated by Carters Lake and Carters Re-regulation Dam (See "Lakes and Reservoirs in Mobile River Basin", stations 02381400 and 02382400). Periods of monthly discharge only are not included in statistics computations.

**AVERAGE DISCHARGE.**--60 years, 1,509 ft<sup>3</sup>/s, 24.67 in/yr, unadjusted.

**EXTREMES OUTSIDE PERIOD OF RECORD.**--Flood of Apr. 8, 1938, reached a stage of 30.0 feet from gage reading at current auxiliary gage discharge 34,000 ft<sup>3</sup>/s.

STATION NUMBER 02383500 COOSAWATTEE RIVER NEAR PINE CHAPEL, GA. STREAM SOURCE AGENCY USGS  
 LATITUDE 343351 LONGITUDE 0844959 DRAINAGE AREA 831.00 DATUM 616.16 STATE 13 COUNTY 129

DISCHARGE, CUBIC FEET PER SECOND, WATER YEAR OCTOBER 1998 TO SEPTEMBER 1999  
 DAILY MEAN VALUES

DAY	OCT	NOV	DEC	JAN	FEB	MAR	APR	MAY	JUN	JUL	AUG	SEP
1	305	341	278	1540	3440	1550	1430	631	524	1920	426	303
2	312	313	269	1410	3380	1650	778	566	615	1460	476	313
3	315	320	288	1640	3450	2680	705	512	1050	1360	458	319
4	298	334	356	1470	3050	3580	671	493	1060	1220	449	327
5	265	339	367	1220	2410	3170	741	508	1000	1090	441	311
6	269	343	352	1100	2220	2140	1570	2880	931	1170	416	289
7	286	348	322	889	2050	1750	1860	4560	857	1520	351	282
8	323	342	343	913	1930	1560	1970	5520	873	1590	340	300
9	342	322	468	1000	1880	1640	1790	4030	898	1510	414	316
10	310	438	498	1080	1520	1720	1080	3320	883	1110	626	713
11	279	451	492	1010	1830	1610	1000	3500	682	2260	401	1440
12	242	442	535	1430	1770	1330	936	3040	697	3440	497	809
13	244	382	629	1300	1370	1290	1070	2230	671	4120	1300	693
14	248	380	685	1090	1320	1440	1260	2250	631	2750	1850	707
15	259	502	890	3440	1300	1550	917	2210	716	2860	943	672
16	264	488	1200	2590	1390	2090	896	1990	694	3270	741	304
17	269	451	1300	1920	2050	2090	778	1750	721	2630	952	302
18	247	387	1310	1940	3650	1420	732	1600	691	2490	1420	303
19	216	361	1310	1820	2580	848	788	1450	674	2100	1280	283
20	300	370	1220	1820	2030	880	1250	1100	636	1800	526	248
21	333	374	1030	1750	1700	1060	934	871	743	1540	333	266
22	334	350	1110	1720	1580	766	1010	652	1360	1360	318	335
23	350	320	1310	3590	1550	742	966	724	1400	1600	434	340
24	356	333	3120	4600	1490	762	794	843	1380	1620	996	322
25	333	346	3220	2690	1280	1510	763	1060	1080	1500	954	327
26	293	347	2120	2800	1260	1680	720	1300	933	1320	1290	312
27	298	327	1910	3720	1230	1600	845	1260	954	1340	1660	279
28	324	317	1760	3320	1810	1360	1020	1060	914	1160	1090	294
29	340	297	1960	2080	---	657	814	672	1180	696	585	321
30	345	265	1850	2010	---	786	773	554	1340	478	868	352
31	351	---	1780	2650	---	1420	---	515	---	457	406	---

