

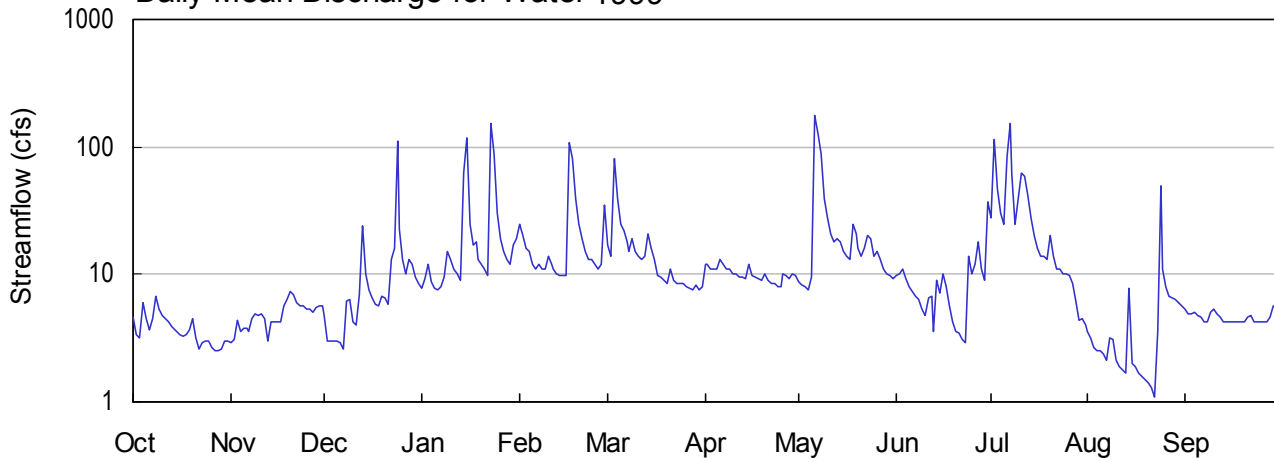
MOBILE RIVER BASIN

02381600

FAUSETT CREEK NEAR TALKING ROCK, GA.

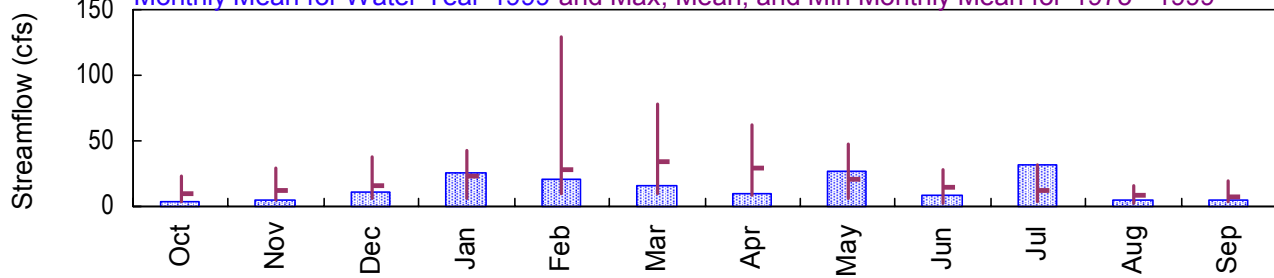
Latitude: 34° 34' 17" Longitude: 84° 27' 55" Hydrologic Unit Code: 03150102 Gilmer County
 Drainage Area: 9.99 mi² Datum: 1311. feet Period of Record: 1975 - 1999

Daily Mean Discharge for Water 1999

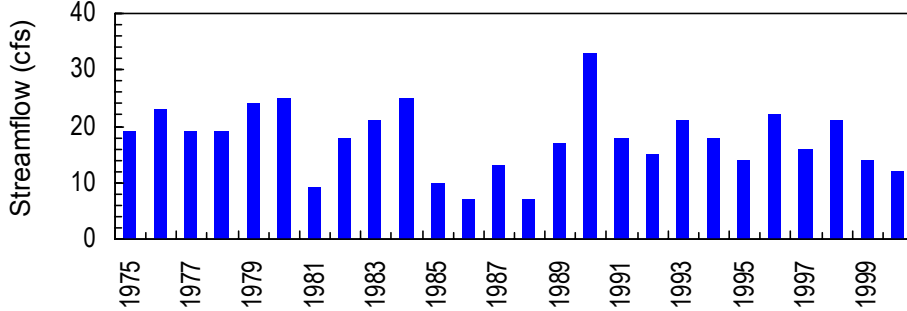


Monthly Statistics

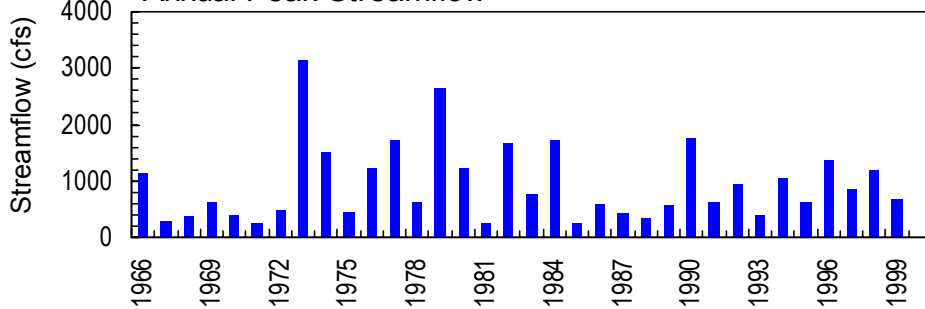
Monthly Mean for Water Year 1999 and Max, Mean, and Min Monthly Mean for 1975 - 1999



Annual Mean Streamflow



Annual Peak Streamflow



**MOBILE RIVER BASIN
1999 Water Year**

02381600 FAUSETT CREEK NEAR TALKING ROCK, GA

LOCATION.--Lat 34°34'13", long 84°28'08", Gilmer County, Hydrologic Unit 03150102, on right bank 25 feet upstream from culvert on County Road 1011, 3.6 miles upstream from mouth, and 4.5 miles northeast of Talking Rock.

DRAINAGE AREA.--9.99 mi².

PERIOD OF RECORD.--Annual maximum, water years 1966-74, October 1974 to current year.

GAGE.--Water-stage recorder and crest-stage gage. Datum of gage is 1,311.14 feet above sea level (leveling by Global Positioning System equipment).

REMARKS.--Records good.

PEAK DISCHARGES FOR CURRENT YEAR.--Peak discharges greater than base discharge of 300 ft³/s and maximum (*):

DATE	TIME	DISCHARGE (ft ³ /s)	GAGE HEIGHT (ft)
Dec. 24	0615	328	3.81
Jan. 14	2345	411	4.31
Jan. 23	2115	351	3.95
May 6	0800	481	4.72
May 7	1845	434	4.45
Jun. 30	1845	433	4.44
Jul. 2	1130	621	5.49
Jul. 6	1615	479	4.71
Jul. 7	1515	677*	5.78*
Aug. 24	0415	363	4.02

STATION NUMBER 02381600 FAUSETT CREEK NEAR TALKING ROCK, GA. STREAM SOURCE AGENCY USGS
 LATITUDE 343417 LONGITUDE 0842755 DRAINAGE AREA 9.99 DATUM 1311.74 STATE 13 COUNTY 123
 PROVISIONAL DATA SUBJECT TO REVISION
 DISCHARGE, CUBIC FEET PER SECOND, WATER YEAR OCTOBER 1998 TO SEPTEMBER 1999
 DAILY MEAN VALUES

DAY	OCT	NOV	DEC	JAN	FEB	MAR	APR	MAY	JUN	JUL	AUG	SEP
1	4.6	2.9	4.8	7.8	25	17	12	8.8	9.8	28	3.6	5.4
2	3.4	3.1	3.0	9.2	20	14	12	8.3	10	116	3.2	4.9
3	3.2	4.4	3.0	12	16	81	11	7.9	11	47	2.7	4.9
4	6.0	3.6	3.0	8.8	15	39	11	7.5	9.2	30	2.5	5.0
5	4.5	3.8	3.0	7.7	12	25	11	9.6	8.0	25	2.5	4.8
6	3.7	3.8	2.9	7.6	11	22	13	175	7.4	83	2.4	4.6
7	4.5	3.6	2.6	8.0	12	18	12	128	6.8	152	2.1	4.2
8	6.7	4.5	6.1	9.5	11	15	11	88	6.3	60	3.2	4.2
9	5.4	4.9	6.3	15	11	19	11	39	5.4	25	3.1	5.1
10	4.8	4.8	4.3	13	14	15	10	28	4.8	39	2.1	5.4
11	4.5	4.9	4.0	11	12	14	10	21	6.5	62	1.9	4.9
12	4.2	4.5	7.0	10	11	13	9.4	18	6.8	59	1.8	4.6
13	3.9	3.0	24	9.0	10	14	9.4	19	3.6	42	1.7	4.2
14	3.8	4.2	10	62	9.9	21	9.3	18	9.1	28	7.8	4.2
15	3.6	4.3	7.6	118	9.9	16	12	15	7.1	20	2.0	4.2
16	3.4	4.2	6.6	25	9.9	13	9.9	14	10	16	1.9	4.2
17	3.3	4.2	5.9	17	107	9.9	9.4	13	7.9	14	1.7	4.2
18	3.4	5.7	5.6	18	81	9.5	9.2	25	5.6	14	1.6	4.2
19	3.7	6.4	6.8	13	39	8.9	9.1	21	4.3	13	1.5	4.2
20	4.5	7.3	6.5	12	25	8.6	10	16	3.6	20	1.4	4.2
21	3.2	6.9	5.9	11	19	11	9.1	14	3.5	14	1.3	4.6
22	2.6	6.0	13	9.8	15	8.9	8.5	16	3.1	11	1.1	4.7
23	2.9	5.6	16	152	13	8.5	8.4	20	2.9	11	3.6	4.2
24	3.0	5.6	110	87	13	8.6	8.1	19	14	10	50	4.2
25	3.0	5.4	23	30	12	8.4	7.9	14	10	10	11	4.2
26	2.7	5.3	13	19	11	8.1	10	15	12	9.8	7.9	4.2
27	2.5	5.1	10	15	12	7.7	9.8	13	18	8.6	6.8	4.2
28	2.5	5.5	13	13	35	7.6	9.2	11	11	6.1	6.5	4.6
29	2.6	5.6	12	12	---	8.2	10	10	9.0	4.4	6.4	5.7
30	3.0	5.6	9.6	17	---	7.6	9.9	9.9	37	4.5	6.0	5.5
31	3.0	---	8.4	19	---	7.9	---	9.3	---	4.0	5.6	---

TOTAL	116.1	144.7	356.9	778.4	591.7	485.4	302.6	831.3	263.7	986.4	156.9	137.7
MEAN	3.75	4.82	11.5	25.1	21.1	15.7	10.1	26.8	8.79	31.8	5.06	4.59
MAX	6.7	7.3	110	152	107	81	13	175	37	152	50	5.7
MIN	2.5	2.9	2.6	7.6	9.9	7.6	7.9	7.5	2.9	4.0	1.1	4.2
CFSM	.37	.48	1.15	2.51	2.12	1.57	1.01	2.68	.88	3.19	.51	.46
IN.	.43	.54	1.33	2.90	2.20	1.81	1.13	3.10	.98	3.67	.58	.51

STATISTICS OF MONTHLY MEAN DATA FOR WATER YEARS 1975 - 1999, BY WATER YEAR (WY)

MEAN	9.19	12.8	15.4	22.6	28.5	34.2	29.4	21.2	14.4	12.3	9.07	7.65
MAX	22.7	29.7	38.2	42.2	129	78.3	61.9	47.1	28.5	31.8	15.3	19.0
(WY)	1998	1978	1993	1990	1990	1980	1979	1984	1989	1999	1989	1989
MIN	3.10	4.82	6.14	6.00	9.52	9.48	8.67	5.65	2.92	3.47	2.76	3.08
(WY)	1988	1999	1989	1981	1988	1988	1986	1986	1988	1988	1988	1987

SUMMARY STATISTICS FOR 1998 CALENDAR YEAR FOR 1999 WATER YEAR WATER YEARS 1975 - 1999

ANNUAL TOTAL		6925.7		5151.8								
ANNUAL MEAN		19.0		14.1						18.0		
HIGHEST ANNUAL MEAN										32.9		1990
LOWEST ANNUAL MEAN										7.15		1988
HIGHEST DAILY MEAN		370	Apr 17		175	May 6				831	Feb 16	1990
LOWEST DAILY MEAN		2.5	Oct 27		1.1	Aug 22				1.1	Jun 26	1986
ANNUAL SEVEN-DAY MINIMUM		2.7	Oct 22		1.5	Aug 16				1.2	Jun 22	1986
INSTANTANEOUS PEAK FLOW					677	Jul 7				3160	May 29	1973
INSTANTANEOUS PEAK STAGE					5.78	Jul 7				16.96	May 29	1973
INSTANTANEOUS LOW FLOW										1.1	Jun 24	1986
ANNUAL RUNOFF (CFSM)		1.90			1.41					1.80		
ANNUAL RUNOFF (INCHES)		25.79			19.18					24.49		
10 PERCENT EXCEEDS		32			25					31		
50 PERCENT EXCEEDS		12			8.6					12		
90 PERCENT EXCEEDS		3.4			3.1					5.2		

STATISTICS COMPUTED BY: cgsomer

DATE: 02/24/2000 AT: 13:35:27