

APALACHICOLA RIVER BASIN

02353500

ICHAWAYNOCHAWAY CREEK AT MILFORD, GA.

Latitude: 31° 22' 58"

Longitude: 84° 32' 52"

Hydrologic Unit Code: 03130009

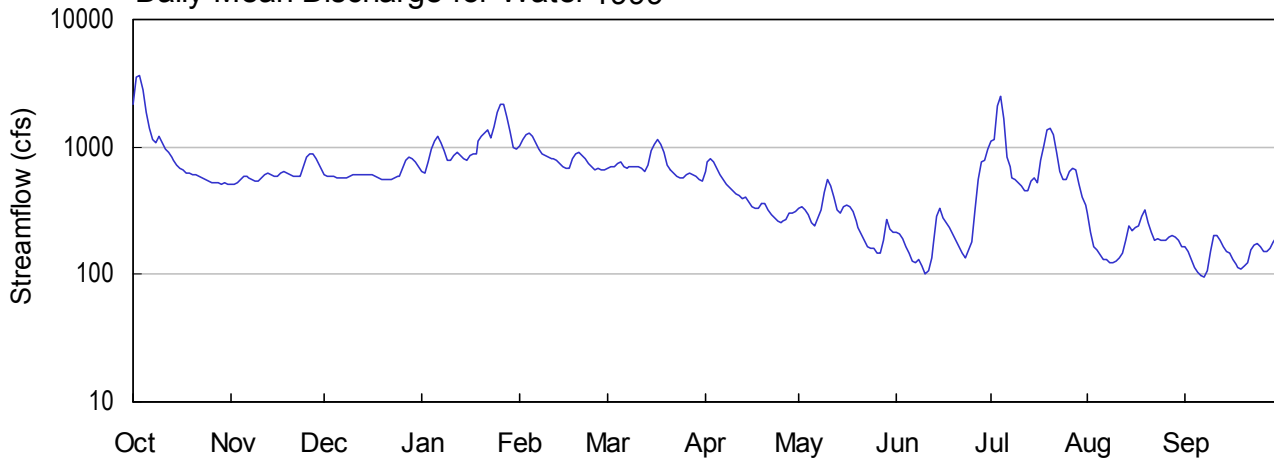
Baker County

Drainage Area: 620.00 mi²

Datum: 150.3 feet

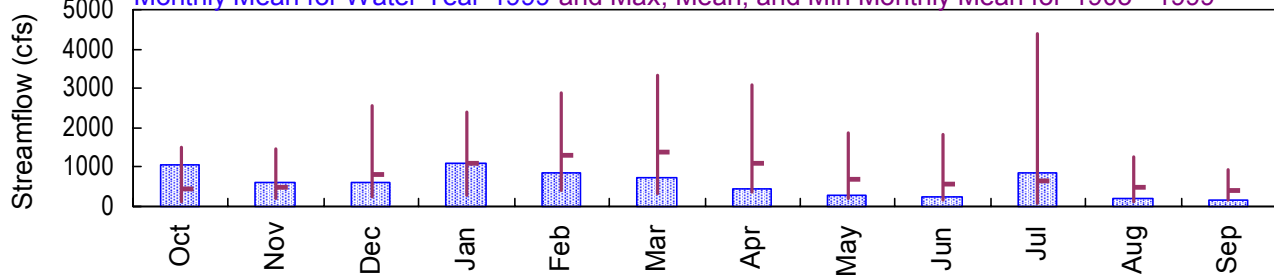
Period of Record: 1905 - 1999

Daily Mean Discharge for Water 1999

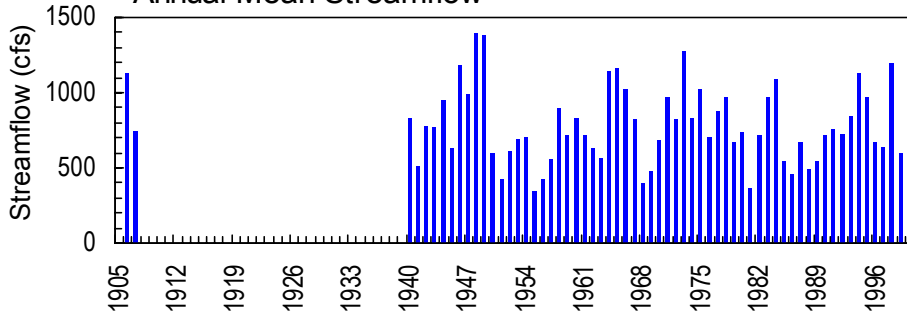


Monthly Statistics

Monthly Mean for Water Year 1999 and Max, Mean, and Min Monthly Mean for 1905 - 1999



Annual Mean Streamflow



02353500 - Ichawaynochaway Creek at Milford, GA

**APALACHICOLA RIVER BASIN
1999 Water Year**

02353500 ICHAWAYNOCHAWAY CREEK AT MILFORD, GA

LOCATION.--Lat 31°22'58", long 84°32'52", Baker County, Hydrologic Unit 03130009, on downstream end of left bank pier of bridge on State Highway 216 at Milford, 2.2 miles upstream from Alligator Creek, and 5.5 miles upstream from Chickasawhatchee Creek.

DRAINAGE AREA.--620 mi², approximately.

PERIOD OF RECORD.--September 1905 to December 1907, October 1939 to current year.

GAGE.--Water-stage recorder. Datum of gage is 150.3 feet above sea level (levels by Georgia Department of Transportation). From Aug. 29, 1905 to Dec. 31, 1907, non-recording gage was located at several sites within 450 feet of present site at various datums. From Oct. 1, 1939 to Nov. 10, 1941, non-recording gage was located at site 100 feet downstream at present datum.

REMARKS.--Records good. Discharges during growing season affected by undetermined amount of irrigation withdrawal. Moderate diurnal fluctuation occurs at low flow.

EXTREMES OUTSIDE PERIOD OF RECORD.--Flood in July 1916 reached a stage of 17.2 feet, from information by local resident; discharge, 15,500 ft³/s.

PEAK DISCHARGES FOR CURRENT YEAR.--Peak discharges greater than base discharge of 3,000 ft³/s and maximum (*):

DATE	TIME	DISCHARGE (ft ³ /s)	GAGE HEIGHT (ft)
Oct. 2	2400	3,870*	7.29*

STATION NUMBER 02353500 ICHAWAYNOCHAWAY CREEK AT MILFORD, GA. STREAM SOURCE AGENCY USGS
 LATITUDE 312258 LONGITUDE 0843252 DRAINAGE AREA 620.00 DATUM 150.30 STATE 13 COUNTY 007
 PROVISIONAL DATA SUBJECT TO REVISION
 DISCHARGE, CUBIC FEET PER SECOND, WATER YEAR OCTOBER 1998 TO SEPTEMBER 1999
 DAILY MEAN VALUES

DAY	OCT	NOV	DEC	JAN	FEB	MAR	APR	MAY	JUN	JUL	AUG	SEP
1	2190	511	611	642	1030	690	647	334	215	1100	302	163
2	3530	512	596	623	1140	706	768	341	207	1130	213	153
3	3620	529	590	767	1240	702	801	321	188	2080	167	131
4	2790	562	584	962	1270	739	757	290	164	2500	155	114
5	1860	586	579	1110	1200	766	673	253	145	1650	142	105
6	1400	582	577	1210	1080	710	602	241	126	825	131	97
7	1130	565	571	1090	960	686	551	274	125	702	131	94
8	1090	552	575	932	894	700	511	325	130	576	122	108
9	1210	546	582	794	859	709	480	446	115	548	125	150
10	1090	544	601	796	826	710	450	552	102	520	126	203
11	953	579	612	850	809	703	433	501	106	491	134	201
12	905	612	611	900	798	671	418	401	136	451	149	185
13	842	620	604	862	776	636	397	321	173	449	183	167
14	778	606	603	813	739	719	406	305	284	547	237	153
15	724	590	604	792	704	940	372	344	329	570	222	145
16	685	596	602	846	679	1060	344	353	275	524	234	132
17	656	625	592	882	673	1160	332	342	253	785	237	121
18	631	638	575	878	801	1050	328	308	234	1030	287	113
19	616	624	558	1110	890	898	355	263	206	1350	325	109
20	603	606	553	1220	909	730	358	231	186	1420	252	116
21	598	589	553	1290	868	653	317	208	165	1250	211	124
22	584	583	557	1370	806	630	293	184	147	917	186	155
23	567	586	567	1170	736	597	279	166	136	635	189	170
24	552	693	582	1450	691	577	265	159	154	558	185	174
25	540	831	587	1870	670	571	258	161	182	557	186	164
26	528	889	677	2190	673	601	263	149	320	642	184	153
27	523	871	796	2140	668	624	272	149	562	671	194	150
28	519	811	843	1740	670	612	300	184	772	655	201	160
29	515	728	820	1320	---	592	304	273	786	516	199	180
30	517	649	762	1000	---	558	309	229	949	405	187	199
31	515	---	698	974	---	539	---	211	---	345	166	---

TOTAL	33261	18815	19222	34593	24059	22239	12843	8819	7872	26399	5962	4389
MEAN	1073	627	620	1116	859	717	428	284	262	852	192	146
MAX	3620	889	843	2190	1270	1160	801	552	949	2500	325	203
MIN	515	511	553	623	668	539	258	149	102	345	122	94
CFSM	1.73	1.01	1.00	1.80	1.39	1.16	.69	.46	.42	1.37	.31	.24
IN.	2.00	1.13	1.15	2.08	1.44	1.33	.77	.53	.47	1.58	.36	.26

STATISTICS OF MONTHLY MEAN DATA FOR WATER YEARS 1905 - 1999, BY WATER YEAR (WY)

MEAN	461	505	828	1110	1283	1378	1091	696	554	639	494	411
MAX	1507	1461	2547	2383	2891	3336	3094	1871	1837	4382	1270	928
(WY)	1995	1948	1949	1964	1973	1998	1944	1971	1906	1994	1948	1994
MIN	141	215	241	304	414	315	374	208	147	96.6	140	145
(WY)	1969	1956	1956	1956	1989	1955	1968	1986	1988	1986	1986	1954

SUMMARY STATISTICS FOR 1998 CALENDAR YEAR FOR 1999 WATER YEAR WATER YEARS 1905 - 1999

ANNUAL TOTAL	406232	218473		
ANNUAL MEAN	1113	599	783	
HIGHEST ANNUAL MEAN			1391	1948
LOWEST ANNUAL MEAN			340	1955
HIGHEST DAILY MEAN	18800	Mar 10	3620	Oct 3
LOWEST DAILY MEAN	120	Jul 9	94	Sep 7
ANNUAL SEVEN-DAY MINIMUM	143	Jul 3	114	Sep 3
INSTANTANEOUS PEAK FLOW			3870	Oct 2
INSTANTANEOUS PEAK STAGE			7.29	Oct 2
INSTANTANEOUS LOW FLOW			90	Sep 6
ANNUAL RUNOFF (CFSM)	1.80	.97	23.20	Jul 7 1994
ANNUAL RUNOFF (INCHES)	24.37	13.11	5.0	Aug 14 1986
10 PERCENT EXCEEDS	1930	1090	1540	
50 PERCENT EXCEEDS	646	575	554	
90 PERCENT EXCEEDS	287	153	240	

STATISTICS COMPUTED BY: gabailey

DATE: 05/04/2000 AT: 06:37:45