

APALACHICOLA RIVER BASIN

02337500

SNAKE CREEK NEAR WHITESBURG, GA.

Latitude: 33° 31' 46" Longitude: 84° 55' 42" Hydrologic Unit Code: 03130002

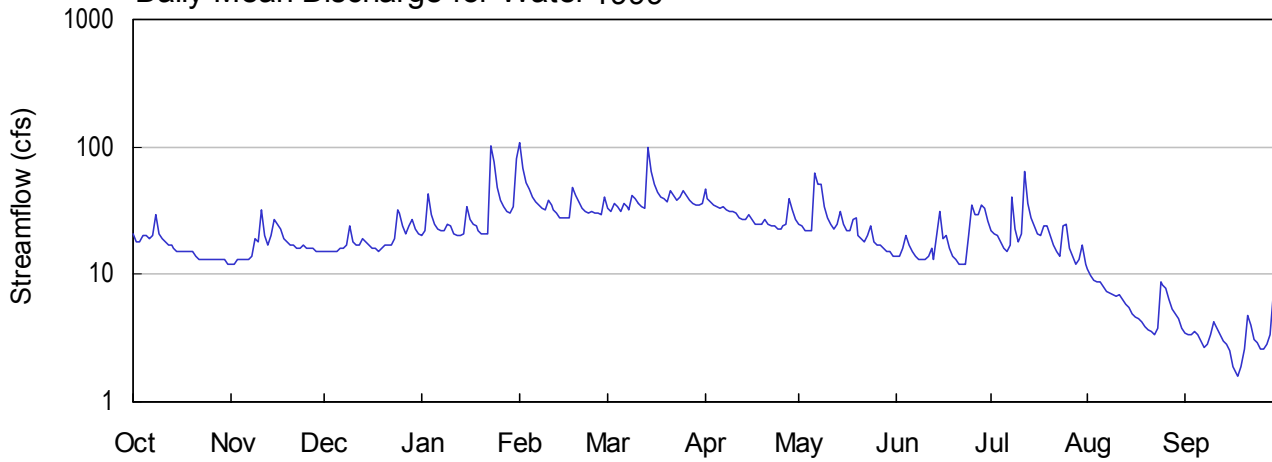
Carroll County

Drainage Area: 35.50 mi<sup>2</sup>

Datum: 832.8 feet

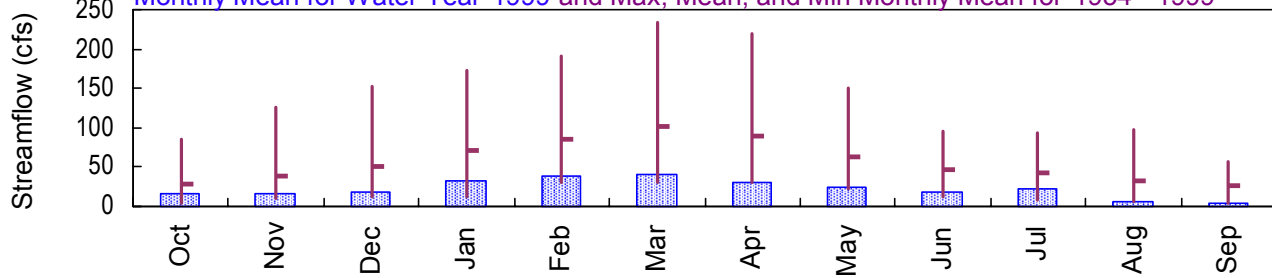
Period of Record: 1954 - 1999

Daily Mean Discharge for Water 1999

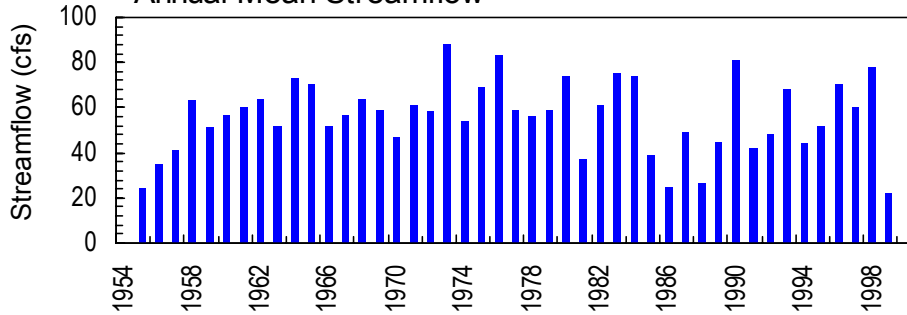


Monthly Statistics

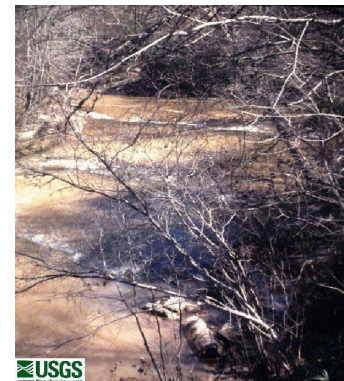
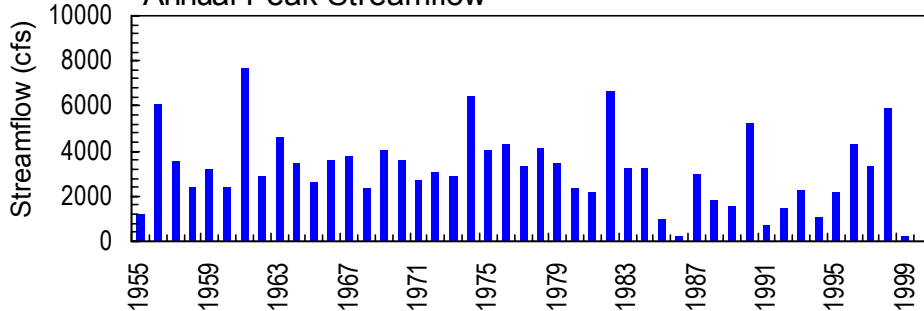
Monthly Mean for Water Year 1999 and Max, Mean, and Min Monthly Mean for 1954 - 1999



Annual Mean Streamflow



Annual Peak Streamflow



02337500 - Snake Creek near Whitesburg, GA - March 12, 1973

**APALACHICOLA RIVER BASIN  
1999 Water Year**

**02337500 SNAKE CREEK NEAR WHITESBURG, GA  
(National Water-Quality Assessment station)**

**LOCATION.**--Lat 33°31'46", long 84°55'42", Carroll County, Hydrologic Unit 03130002, on left bank, on downstream side of former bridge pier, 50 feet upstream from county highway bridge, at Banning Mills, 1.6 miles north of U.S. Highway 27 (ALT), 3 miles northwest of Whitesburg, 4 miles downstream from Little Snake Creek, and 7 miles upstream from mouth.

**DRAINAGE AREA.**--35.5 mi<sup>2</sup>.

**WATER-DISCHARGE RECORDS**

**PERIOD OF RECORD.**--September 1954 to current year.

**REVISED RECORDS.**--WDR GA-90-1: Drainage area.

**GAGE.**--Water-stage recorder. Datum of gage is 832.8 feet above sea level (leveling by Global Positioning System equipment).

**REMARKS.**--Records good.

**PEAK DISCHARGES FOR CURRENT YEAR.**--Peak discharges greater than base discharge of 1,000 ft<sup>3</sup>/s and maximum (\*):

DATE	TIME	DISCHARGE (ft <sup>3</sup> /s)	GAGE HEIGHT (ft)
Jan. 23	1200	223*	3.18*

No other peaks greater than base discharge

STATION NUMBER 02337500 SNAKE CREEK NEAR WHITESBURG, GA. STREAM SOURCE AGENCY USGS  
 LATITUDE 333146 LONGITUDE 0845542 DRAINAGE AREA 35.50 DATUM 832.75 STATE 13 COUNTY 045  
 PROVISIONAL DATA SUBJECT TO REVISION  
 DISCHARGE, CUBIC FEET PER SECOND, WATER YEAR OCTOBER 1998 TO SEPTEMBER 1999  
 DAILY MEAN VALUES

DAY	OCT	NOV	DEC	JAN	FEB	MAR	APR	MAY	JUN	JUL	AUG	SEP
1	21	12	15	20	107	33	47	25	14	22	11	3.5
2	18	12	15	22	68	31	39	24	14	21	9.9	3.4
3	18	13	15	43	52	36	37	22	16	20	9.0	3.4
4	20	13	15	29	47	34	35	22	20	18	8.8	3.6
5	20	13	15	25	40	31	34	22	17	16	8.7	3.4
6	19	13	16	23	37	36	33	63	15	15	8.0	3.0
7	20	13	16	22	35	34	34	51	14	17	7.3	2.7
8	29	14	17	22	33	32	32	51	13	40	7.1	2.8
9	21	19	24	25	32	42	31	34	13	23	6.9	3.4
10	19	18	18	24	38	39	31	28	13	18	6.8	4.2
11	18	32	17	21	35	36	30	25	14	21	7.0	3.8
12	17	20	17	20	32	34	28	23	16	65	6.4	3.4
13	17	17	19	20	30	33	27	25	13	36	5.8	3.0
14	16	20	18	21	28	100	27	31	20	28	5.5	2.8
15	15	27	17	34	28	65	29	25	31	24	4.9	2.5
16	15	25	16	27	28	51	27	22	19	21	4.6	1.9
17	15	23	16	25	28	44	25	22	20	20	4.5	1.7
18	15	19	15	24	48	41	25	27	16	24	4.2	1.6
19	15	18	16	22	42	39	25	28	14	24	3.9	1.9
20	15	17	17	21	37	37	27	20	13	20	3.7	2.6
21	14	17	17	21	33	45	25	19	12	17	3.6	4.7
22	13	16	17	21	31	42	24	18	12	15	3.4	4.0
23	13	16	19	102	30	38	24	20	12	14	3.8	3.1
24	13	17	32	76	31	40	23	24	20	24	8.8	2.9
25	13	16	30	48	30	45	23	18	35	25	8.3	2.6
26	13	16	24	38	30	42	24	17	29	16	7.8	2.6
27	13	16	21	34	29	38	25	17	29	14	6.4	2.8
28	13	15	24	31	41	36	39	16	35	12	5.4	3.4
29	13	15	27	30	---	35	32	15	33	13	4.9	6.9
30	13	15	23	34	---	35	27	15	26	17	4.5	8.7
31	12	---	21	80	---	36	---	14	---	12	3.8	---

TOTAL	506	517	589	1005	1080	1260	889	783	568	672	194.7	100.3
MEAN	16.3	17.2	19.0	32.4	38.6	40.6	29.6	25.3	18.9	21.7	6.28	3.34
MAX	29	32	32	102	107	100	47	63	35	65	11	8.7
MIN	12	12	15	20	28	31	23	14	12	12	3.4	1.6
CFSM	.46	.49	.54	.91	1.09	1.14	.83	.71	.53	.61	.18	.09
IN.	.53	.54	.62	1.05	1.13	1.32	.93	.82	.60	.70	.20	.11

STATISTICS OF MONTHLY MEAN DATA FOR WATER YEARS 1954 - 1999, BY WATER YEAR (WY)

MEAN	29.1	38.7	50.2	70.5	84.9	101	89.6	63.4	47.3	41.7	32.8	25.6
MAX	85.4	126	152	173	192	233	219	151	95.7	94.0	96.8	56.8
(WY)	1990	1993	1962	1972	1961	1990	1979	1973	1973	1976	1967	1994
MIN	4.43	11.1	12.8	12.3	31.4	31.5	29.6	22.9	11.7	8.93	6.28	3.34
(WY)	1955	1955	1956	1956	1989	1988	1986	1986	1988	1986	1999	1999

SUMMARY STATISTICS FOR 1998 CALENDAR YEAR FOR 1999 WATER YEAR WATER YEARS 1954 - 1999

ANNUAL TOTAL	26108	8164.0	
ANNUAL MEAN	71.5	22.4	56.1
HIGHEST ANNUAL MEAN			88.2 1973
LOWEST ANNUAL MEAN			22.4 1999
HIGHEST DAILY MEAN	2500 Mar 8	107 Feb 1	2640 Feb 25 1961
LOWEST DAILY MEAN	12 Oct 31	1.6 Sep 18	1.6 Sep 18 1999
ANNUAL SEVEN-DAY MINIMUM	13 Oct 27	2.1 Sep 14	2.1 Sep 14 1999
INSTANTANEOUS PEAK FLOW		223 Jan 23	7690 Feb 25 1961
INSTANTANEOUS PEAK STAGE		3.18 Jan 23	14.40 Feb 25 1961
INSTANTANEOUS LOW FLOW		1.6 Sep 17	1.6 Sep 17 1999
ANNUAL RUNOFF (CFSM)	2.01	.63	1.58
ANNUAL RUNOFF (INCHES)	27.36	8.55	21.47
10 PERCENT EXCEEDS	116	38	92
50 PERCENT EXCEEDS	45	20	40
90 PERCENT EXCEEDS	16	4.6	17

STATISTICS COMPUTED BY: cmhacke

DATE: 07/13/2000 AT: 10:15:51