

APALACHICOLA RIVER BASIN

02335000

CHATTAHOOCHEE RIVER NEAR NORCROSS, GA.

Latitude: 33° 59' 50" Longitude: 84° 12' 07" Hydrologic Unit Code: 03130001

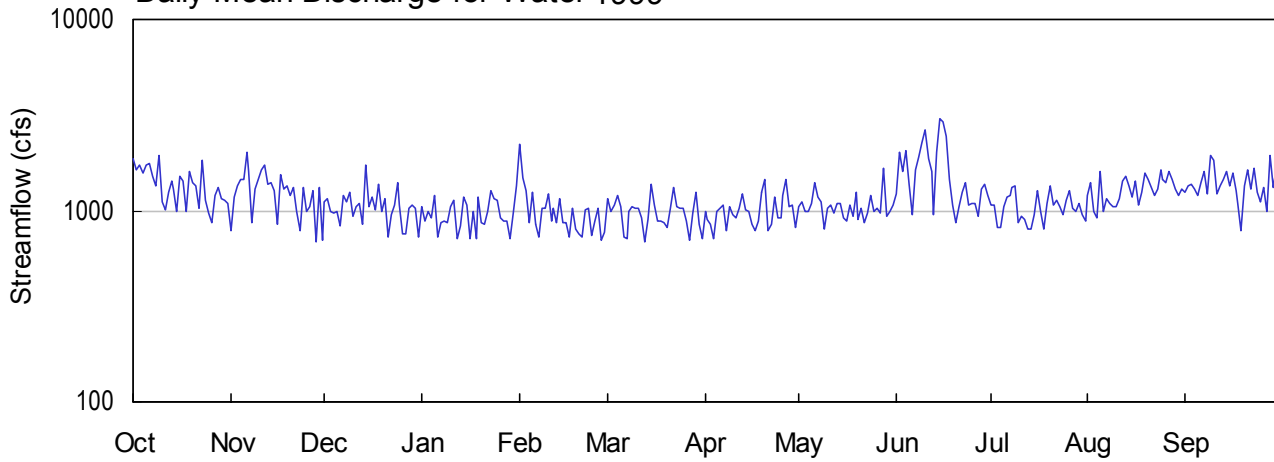
Gwinnett County

Drainage Area: 1170.0 mi²

Datum: 878.1 feet

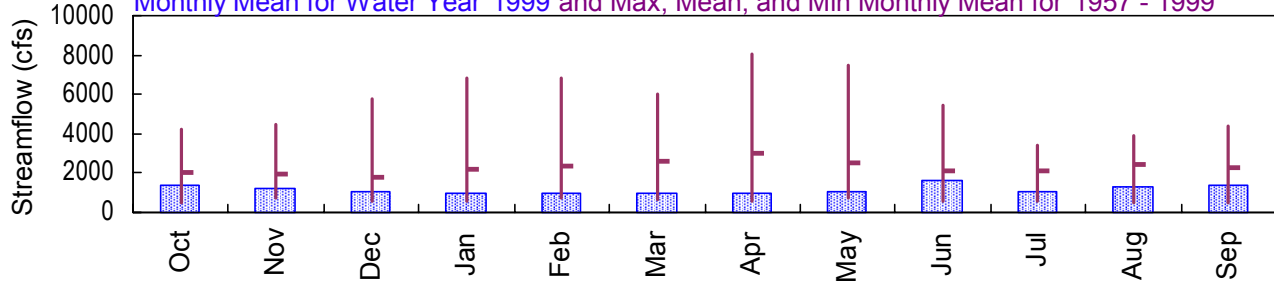
Period of Record: 1957 - 1999

Daily Mean Discharge for Water 1999

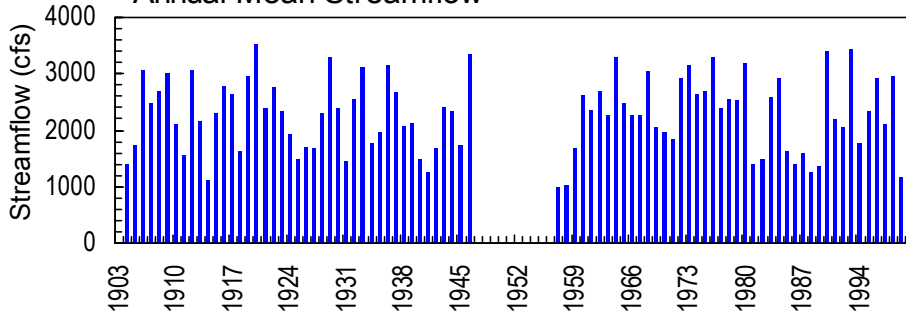


Monthly Statistics

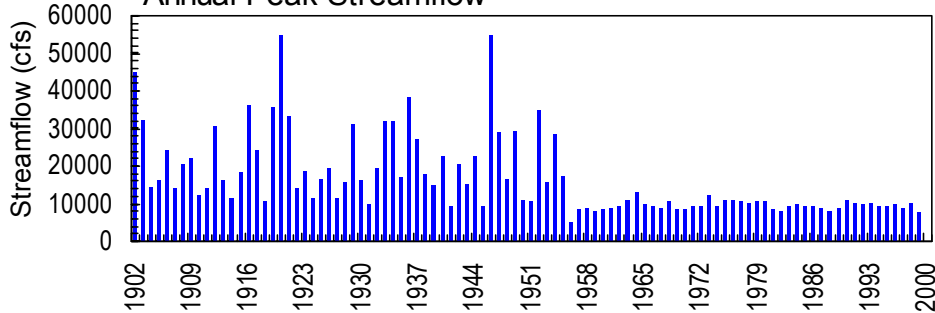
Monthly Mean for Water Year 1999 and Max, Mean, and Min Monthly Mean for 1957 - 1999



Annual Mean Streamflow



Annual Peak Streamflow



02335000 Chattahoochee River near Norcross, GA

APALACHICOLA RIVER BASIN
1999 Water Year

02335000 CHATTAHOOCHEE RIVER NEAR NORCROSS, GA

LOCATION.--Lat 33°59'50", long 84°12'07", Gwinnett-Fulton County line, Hydrologic Unit 03130001, on downstream side of right bank pier of bridge on State Highway 141, 1.5 miles upstream from John Creek, 4.5 miles north of Norcross, 6.5 miles downstream from Suwanee Creek, 18 miles downstream from Buford Dam, and at mile 330.8.

DRAINAGE AREA.--1,170 mi², approximately.

PERIOD OF RECORD.--October 1902 to September 1946, October 1956 to current year. Monthly discharge only for October to December 1902, published in WSP 1304. Gage-height records collected at same site 1910-33, and since 1945 are contained in reports of National Weather Service.

GAGE.--Water-stage recorder. Datum of gage is 878.14 feet above sea level (levels by U.S. Army Corps of Engineers). Prior to July 13, 1955, non-recording gage located at site 500 feet downstream at same datum. From July 14, 1955 to Mar. 11, 1957, non-recording gage located at present site and datum.

REMARKS.--Records good. Flow regulated by Lake Sidney Lanier since January 1956 (See "Lakes and Reservoirs in Apalachicola River Basin", station 02334400). Diversion and return flow above station regulated by Gwinnett County. Periods of monthly discharge only are not included in statistics computations.

AVERAGE DISCHARGE.--87 years (1903-46, 1957-current year), 2,284 ft³/s, 26.51 in/yr, unadjusted.

EXTREMES OUTSIDE PERIOD OF RECORD.--Maximum stage known since at least 1896, that of Jan. 8, 1946.

STATION NUMBER 02335000 CHATTAHOOCHEE RIVER NEAR NORCROSS, GA. STREAM SOURCE AGENCY USGS
 LATITUDE 335950 LONGITUDE 0841207 DRAINAGE AREA 1170.00 DATUM 878.14 STATE 13 COUNTY 135
 PROVISIONAL DATA SUBJECT TO REVISION
 DISCHARGE, CUBIC FEET PER SECOND, WATER YEAR OCTOBER 1998 TO SEPTEMBER 1999
 DAILY MEAN VALUES

DAY	OCT	NOV	DEC	JAN	FEB	MAR	APR	MAY	JUN	JUL	AUG	SEP
1	1870	791	1120	1040	2220	1150	993	1050	1220	1080	1200	1240
2	1630	1170	1160	889	1490	995	894	1110	2010	1070	1390	1360
3	1740	1340	995	987	1270	1080	844	993	1590	819	981	1370
4	1580	1450	965	924	868	1210	720	989	2040	813	917	1300
5	1740	1470	995	1210	1250	1040	986	1090	1380	1040	1600	1190
6	1770	2030	831	723	850	734	1030	1400	955	1180	991	1400
7	1510	1610	1190	872	731	714	1060	1180	1620	1200	1150	1610
8	1360	867	1120	882	1030	999	782	1120	1890	1310	1100	1220
9	1950	1290	1250	864	1020	1050	1050	808	2270	1350	1040	1950
10	1120	1450	938	1040	1220	1020	955	1030	2670	869	1040	1820
11	1010	1630	1050	1130	875	1030	923	1080	1860	931	1150	1230
12	1240	1730	1090	709	1030	923	1020	977	1600	896	1440	1340
13	1440	1370	846	839	868	689	1230	1100	944	808	1520	1460
14	1300	1400	1720	1170	1150	897	1010	1100	2030	800	1360	1600
15	1000	1270	1040	1060	865	1380	996	918	3000	948	1180	1340
16	1510	857	1170	719	866	1070	856	878	2930	1270	1430	1580
17	1430	1550	1010	986	724	890	786	1070	2460	991	1060	1270
18	1000	1290	1380	715	1020	878	889	943	1450	806	1250	1090
19	1600	1360	1000	1170	794	863	1260	1240	1080	1100	1570	791
20	1410	1210	1160	868	758	812	1460	904	859	1350	1470	1360
21	1350	1330	730	852	733	1020	781	1020	1050	1070	1310	1650
22	1020	982	959	989	1010	1320	851	870	1250	1140	1210	1290
23	1830	783	1070	1280	1020	1040	1170	967	1390	1040	1300	1670
24	1140	1330	1410	1160	737	1030	919	1210	1070	948	1630	1240
25	968	999	1080	1130	884	1030	921	982	1090	1130	1460	1120
26	861	1040	752	914	1020	879	1190	1030	1100	1280	1400	1330
27	1210	1270	760	883	702	694	1460	963	942	1030	1610	999
28	1330	685	1030	876	770	975	1050	1660	1290	991	1460	1960
29	1150	1310	1080	711	---	1260	1060	927	1370	1090	1290	1320
30	1140	702	1030	973	---	857	823	995	1200	953	1210	1690
31	1090	---	727	1350	---	719	---	1080	---	882	1300	---

TOTAL	42299	37566	32658	29915	27775	30248	29969	32684	47610	32185	40019	41790
MEAN	1364	1252	1053	965	992	976	999	1054	1587	1038	1291	1393
MAX	1950	2030	1720	1350	2220	1380	1460	1660	3000	1350	1630	1960
MIN	861	685	727	709	702	689	720	808	859	800	917	791
CFSM	1.17	1.07	.90	.82	.85	.83	.85	.90	1.36	.89	1.10	1.19
IN.	1.34	1.19	1.04	.95	.88	.96	.95	1.04	1.51	1.02	1.27	1.33

STATISTICS OF MONTHLY MEAN DATA FOR WATER YEARS 1957 - 1999, BY WATER YEAR (WY)

MEAN	2052	1955	1752	2171	2387	2625	3001	2513	2113	2096	2432	2266
MAX	4196	4433	5778	6802	6797	6053	8042	7509	5476	3427	3875	4423
(WY)	1992	1975	1993	1993	1996	1990	1964	1964	1973	1963	1994	1967
MIN	502	698	558	529	709	647	608	696	569	598	501	523
(WY)	1958	1957	1958	1958	1957	1959	1959	1958	1957	1957	1957	1957

SUMMARY STATISTICS FOR 1998 CALENDAR YEAR FOR 1999 WATER YEAR WATER YEARS 1957 - 1999

ANNUAL TOTAL	1038818	424718	
ANNUAL MEAN	2846	1164	2279
HIGHEST ANNUAL MEAN			3431
LOWEST ANNUAL MEAN			1001
HIGHEST DAILY MEAN	8490	May 8	3000
LOWEST DAILY MEAN	685	Nov 28	685
ANNUAL SEVEN-DAY MINIMUM	923	Dec 25	823
INSTANTANEOUS PEAK FLOW			7560
INSTANTANEOUS PEAK STAGE			9.15
ANNUAL RUNOFF (CFSM)	2.43		.99
ANNUAL RUNOFF (INCHES)	33.03		13.50
10 PERCENT EXCEEDS	6310		1600
50 PERCENT EXCEEDS	2070		1080
90 PERCENT EXCEEDS	1040		813

STATISTICS COMPUTED BY: darrelle

DATE: 07/17/2000 AT: 11:49:44