

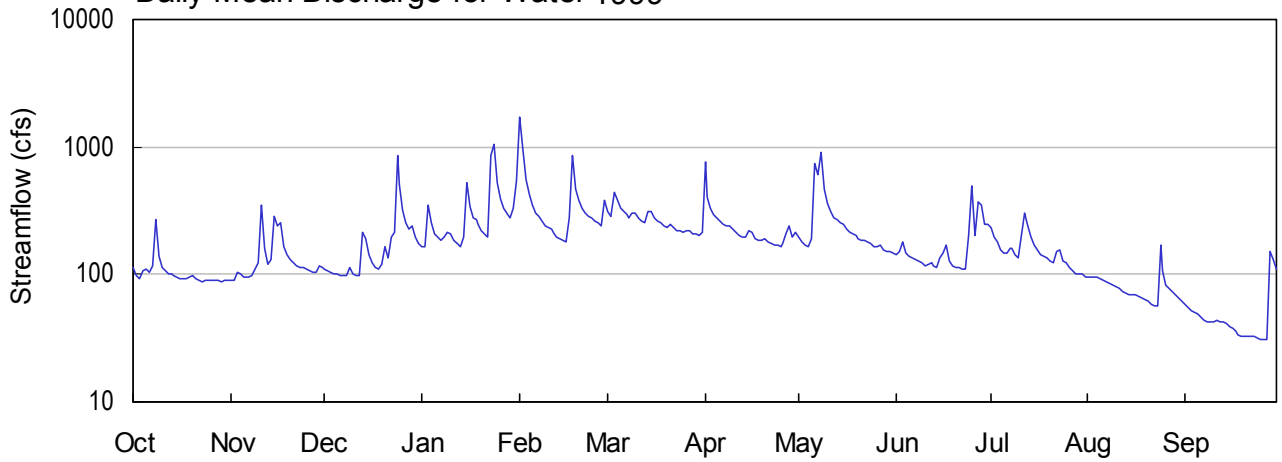
APALACHICOLA RIVER BASIN

02333500

CHESTATEE RIVER AT NEAR DAHLONEGA, GA.

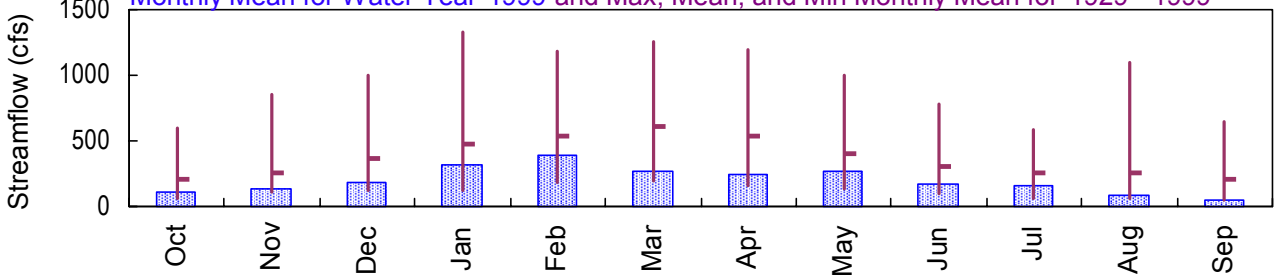
Latitude: 34° 31' 41" Longitude: 83° 56' 23" Hydrologic Unit Code: 03130001 Lumpkin County  
Drainage Area: 153.00 mi<sup>2</sup> Datum: 1128. feet Period of Record: 1929 - 1999

Daily Mean Discharge for Water 1999

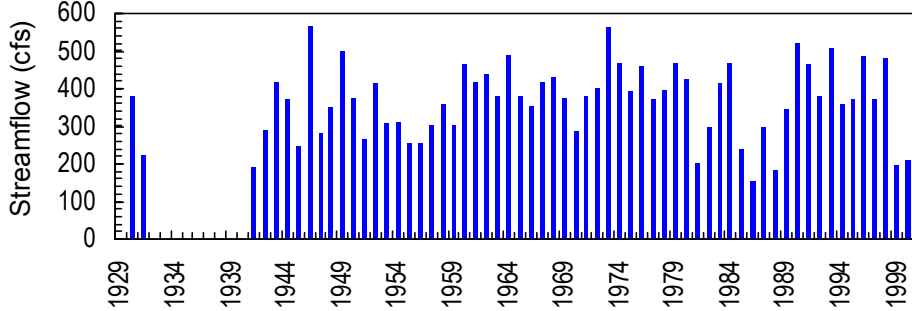


Monthly Statistics

Monthly Mean for Water Year 1999 and Max, Mean, and Min Monthly Mean for 1929 - 1999



Annual Mean Streamflow



**APALACHICOLA RIVER BASIN  
1999 Water Year**

**02333500 CHESTATEE RIVER NEAR DAHLONEGA, GA**

**LOCATION.**--Lat 34°31'41", long 83°56'23", Lumpkin County, Hydrologic Unit 03130001, on left bank 250 feet upstream from Bearden Bridge on State Highway 52, 2.0 miles downstream from Ballplay Creek, 2.5 miles east of Dahlonega, and 3.5 miles upstream from Yahoola Creek.

**DRAINAGE AREA.**--153 mi<sup>2</sup>.

**WATER-DISCHARGE RECORDS**

**PERIOD OF RECORD.**--July 1929 to January 1932, April 1940 to current year. Monthly discharge only for July 1929, published in WSP 1304.

**REVISED RECORDS.**--WRD GA-95-1:1994.

**GAGE.**--Water-stage recorder. Datum of gage is 1,128.6 feet above sea level (levels by U.S. Army Corps of Engineers).

**REMARKS.**--Records good. Periods of monthly discharges only are not included in statistics computations.

**PEAKS DISCHARGES FOR CURRENT YEAR.**--Peak discharges greater than base discharge of 2,600 ft<sup>3</sup>/s and maximum (\*):

DATE	TIME	DISCHARGE (ft <sup>3</sup> /s)	GAGE HEIGHT (ft)
Feb. 1	1345	2,430*	5.89*

No other peaks greater than base discharge

**APALACHICOLA RIVER BASIN  
1999 Water Year**

**02333500 CHESTATEE RIVER NEAR DAHLONEGA, GA--continued**

**LOCATION.--**Lat 34°31'41", long 83°56'23", Lumpkin County, Hydrologic Unit 03130001, on left bank 250 feet upstream from Bearden Bridge on State Highway 52, 2 miles downstream from Ballplay Creek, 2.5 miles east of Dahlonega, and 3.5 miles upstream from Yahoola Creek.

**DRAINAGE AREA.--**153 mi<sup>2</sup>.

**WATER-QUALITY RECORDS**

**PERIOD OF RECORD.--**December 1957 to April 1959, October 1968, January 1972 to May 1976, and October 1989 to current year.

STATION NUMBER 02333500 CHESTATEE RIVER AT ST RT 52 NEAR DAHLONEGA, GA. STREAM SOURCE AGENCY USGS

LATITUDE 343141 LONGITUDE 0835623 DRAINAGE AREA 153.00 DATUM 1128.60 STATE 13 COUNTY 187

PROVISIONAL DATA

SUBJECT TO REVISION

DISCHARGE, CUBIC FEET PER SECOND, WATER YEAR OCTOBER 1998 TO SEPTEMBER 1999

DAILY MEAN VALUES

DAY	OCT	NOV	DEC	JAN	FEB	MAR	APR	MAY	JUN	JUL	AUG	SEP
1	112	89	111	165	1740	310	757	198	142	232	95	58
2	98	91	107	165	955	282	408	179	151	199	95	55
3	92	104	103	347	552	437	330	170	182	179	95	52
4	106	102	100	256	427	384	297	164	148	158	94	50
5	111	96	100	210	347	331	276	191	139	146	93	49
6	104	96	99	195	307	314	261	749	136	148	90	46
7	118	94	97	184	285	294	250	613	131	160	87	44
8	270	97	98	196	263	274	241	917	127	162	85	43
9	138	110	112	216	241	303	238	472	122	141	82	42
10	112	122	101	206	232	304	226	361	117	135	80	43
11	106	349	98	185	225	278	217	309	119	200	77	44
12	102	160	98	174	213	263	203	280	123	299	74	43
13	100	121	216	167	199	253	199	273	117	242	72	42
14	98	132	189	195	191	308	198	256	113	195	70	41
15	95	289	141	528	186	308	218	248	134	168	70	39
16	93	240	124	343	181	277	214	226	148	154	69	38
17	93	253	114	279	276	263	192	214	170	142	67	36
18	93	167	109	270	863	252	187	208	129	138	66	34
19	94	141	120	244	472	243	183	202	117	136	63	33
20	97	132	165	220	380	233	189	191	113	128	61	33
21	93	124	134	207	331	250	180	184	112	124	59	33
22	90	117	199	197	301	234	175	183	109	153	57	33
23	87	113	214	855	285	222	171	181	109	156	56	33
24	90	114	866	1060	276	218	170	175	200	128	170	32
25	91	110	506	519	264	217	164	164	496	122	107	31
26	91	107	323	388	251	219	175	166	201	112	83	31
27	89	104	253	333	243	220	208	170	372	106	78	31
28	89	103	225	300	379	207	238	157	351	102	74	152
29	88	115	240	274	---	207	199	152	248	100	70	132
30	89	114	197	328	---	202	214	150	244	102	66	111
31	89	---	177	536	---	215	---	145	---	95	62	---

TOTAL	3218	4106	5736	9742	10865	8322	7178	8248	5120	4762	2467	1484
MEAN	104	137	185	314	388	268	239	266	171	154	79.6	49.5
MAX	270	349	866	1060	1740	437	757	917	496	299	170	152
MIN	87	89	97	165	181	202	164	145	109	95	56	31
CFSM	.68	.89	1.21	2.05	2.54	1.75	1.56	1.74	1.12	1.00	.52	.32
IN.	.78	1.00	1.39	2.37	2.64	2.02	1.75	2.01	1.24	1.16	.60	.36

STATISTICS OF MONTHLY MEAN DATA FOR WATER YEARS 1929 - 1999, BY WATER YEAR (WY)

MEAN	211	261	368	477	540	610	532	407	300	262	256	204
MAX	594	855	996	1334	1183	1255	1200	1004	781	589	1097	650
(WY)	1990	1930	1962	1946	1946	1980	1979	1973	1973	1967	1967	1929
MIN	66.3	105	127	119	177	197	158	132	94.0	63.4	63.5	49.5
(WY)	1942	1942	1956	1981	1941	1988	1986	1941	1988	1986	1986	1999

SUMMARY STATISTICS                      FOR 1998 CALENDAR YEAR                      FOR 1999 WATER YEAR                      WATER YEARS 1929 - 1999

ANNUAL TOTAL		159240		71248								
ANNUAL MEAN		436		195						368		
HIGHEST ANNUAL MEAN										565		1946
LOWEST ANNUAL MEAN										152		1986
HIGHEST DAILY MEAN		4420	Feb 4	1740	Feb 1				11400		Aug 23	1967
LOWEST DAILY MEAN		75	Sep 19	31	Sep 25				31		Sep 25	1999
ANNUAL SEVEN-DAY MINIMUM		79	Sep 14	32	Sep 21				32		Sep 21	1999
INSTANTANEOUS PEAK FLOW				2430	Feb 1				22700		Aug 23	1967
INSTANTANEOUS PEAK STAGE				5.89	Feb 1				25.17		Aug 23	1967
INSTANTANEOUS LOW FLOW				31	Sep 25				31		Sep 25	1999
ANNUAL RUNOFF (CFSM)		2.85		1.28						2.40		
ANNUAL RUNOFF (INCHES)		38.72		17.32						32.64		
10 PERCENT EXCEEDS		852		329						650		
50 PERCENT EXCEEDS		259		164						277		
90 PERCENT EXCEEDS		96		68						124		

STATISTICS COMPUTED BY: cgsomer

DATE: 03/13/2000 AT: 14:12:06