

ALTAMAHA RIVER BASIN

02213700

OCMULGEE RIVER NEAR WARNER ROBINS, GA.

Latitude: 32° 40' 17" Longitude: 83° 36' 11" Hydrologic Unit Code: 03070103

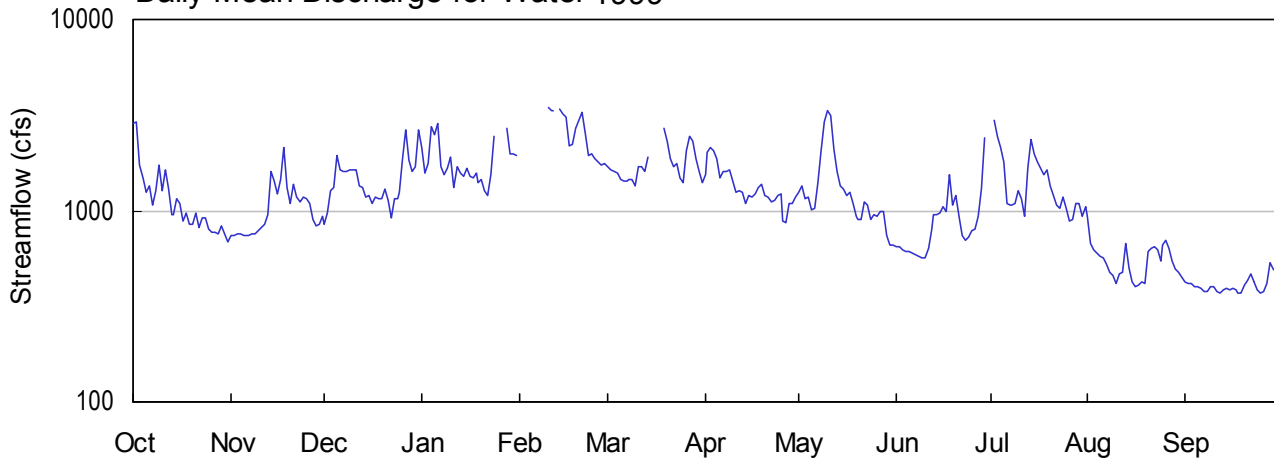
Bibb County

Drainage Area: 2690.0 mi²

Datum: 244.0 feet

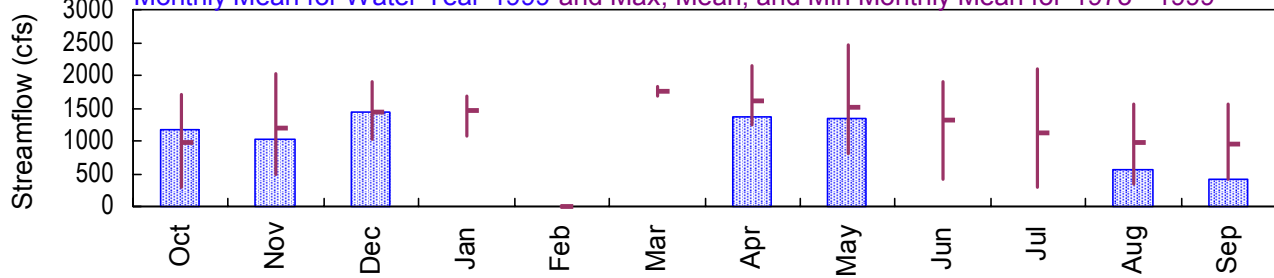
Period of Record: 1973 - 1999

Daily Mean Discharge for Water 1999

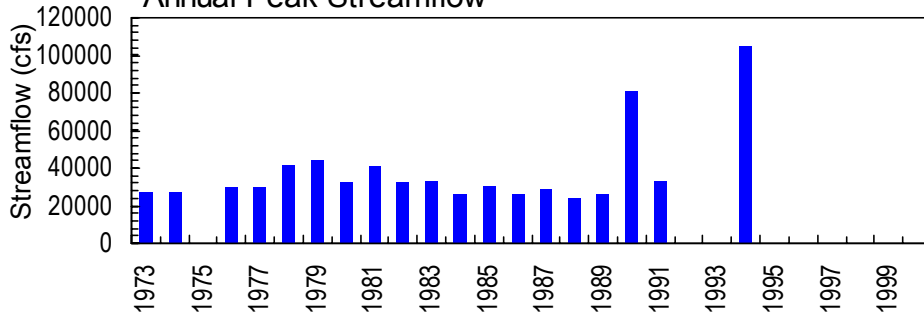


Monthly Statistics

Monthly Mean for Water Year 1999 and Max, Mean, and Min Monthly Mean for 1973 - 1999



Annual Peak Streamflow



**ALTAMAHA RIVER BASIN
1999 Water Year**

02213700 OCMULGEE RIVER NEAR WARNER ROBINS, GA

LOCATION.--Lat 32°40'17", long 83°36'11", Bibb-Twiggs County line, Hydrologic Unit 03070103, on right bank 0.8 miles upstream from Echeconnee Creek, 4.0 miles northeast of Warner Robins, and 5.7 miles downstream from Tobesofkee Creek.

DRAINAGE AREA.--2,690 mi², approximately.

WATER-DISCHARGE RECORDS

PERIOD OF RECORD.--October 1972 to current year, discharge less than 3,600 ft³/s, only.

GAGE.--Water-stage recorder. Datum of gage is 244.0 feet above sea level (from topographic map). Station was discontinued as a continuous discharge station on September 30, 1999.

REMARKS.--Records good to fair. Flow regulated by Lloyd Shoals Reservoir (See "Lakes and Reservoirs in Altamaha River Basin", station 02210000).

EXTREMES FOR PERIOD OF RECORD.--Maximum gage height, 21.75 feet, July 8, 1994; minimum daily discharge, 227 ft³/s, Oct. 18, 1987 and July 27, 1988.

EXTREMES FOR CURRENT YEAR.--Maximum gage height, 14.41 feet, Feb. 3; minimum daily discharge, 373 ft³/s, Sep. 18, 19, and 25.

**ALTAMAHA RIVER BASIN
1998 and 1999 Water Years**

02213700 OCMULGEE RIVER NEAR WARNER ROBINS, GA--continued

LOCATION.--Lat 32°40'17", long 83°36'11", Bibb-Twiggs County line, Hydrologic Unit 03070103, on right bank 0.8 miles upstream from Echeconnee Creek, 4.0 miles northeast of Warner Robins, and 5.7 miles downstream from Tobesofkee Creek.

DRAINAGE AREA.--2,690 mi², approximately.

WATER-QUALITY RECORDS

PERIOD OF RECORD.—October 1970 to current year.

PERIOD OF DAILY RECORD.—

DISSOLVED OXYGEN: May 1970 to current year.

pH: October 1971 to current year.

SPECIFIC CONDUCTANCE: October 1970 to current year.

WATER TEMPERATURE: February 1970 to current year.

INSTRUMENTATION.—Water quality monitor.

REMARKS.—Laboratory chemical analyses with analyzing agency code 81341 are by the Laboratory Services Section, Environmental Protection Division, Georgia Department of Natural Resources. Laboratory chemical analyses with analyzing agency code 81213 are by the USGS. Field determinations of air temperature, dissolved oxygen, pH, specific conductance, and water temperature are by the USGS.

EXTREMES FOR PERIOD OF DAILY RECORD.—

DISSOLVED OXYGEN: Maximum recorded, 16.5 mg/L, March 12, 1970; minimum recorded, 0.0 mg/L, June 8, 9, 1971, September 17, 1980.

pH: Maximum recorded, 8.8 units, October 6, 7, 8, 1993; minimum recorded, 5.2 units, January 14, 1972.

SPECIFIC CONDUCTANCE: Maximum recorded, 377 microsiemens, October 27, 1987; minimum recorded 25.0 microsiemens, January 7, 1974.

WATER TEMPERATURE: Maximum recorded, 34.5 °C July 21, 1986, August 2, 1999; minimum recorded, 1.0 °C, January 19, 20, 1977.

**ALTAMAHA RIVER BASIN
1998 and 1999 Water Years**

02213700 OCMULGEE RIVER NEAR WARNER ROBINS, GA

WATER-QUALITY RECORDS--continued

EXTREMES FOR 1998 WATER YEAR.—

DISSOLVED OXYGEN: Maximum, 11.5 mg/L Jan. 2; minimum, 4.2 mg/L, May 30.

pH: Maximum, 7.5 units, Dec. 11, 12, 13, 14, Jul. 8; minimum, 6.4 units, Sep. 5.

SPECIFIC CONDUCTANCE: Maximum, 196 microsiemens, Aug. 7; minimum, 37 microsiemens, Mar. 10.

WATER TEMPERATURE: Maximum, 33.0 °C, Jun. 30; minimum, 8.0 °C, Dec. 17, 18.

EXTREMES FOR 1999 WATER YEAR.—

DISSOLVED OXYGEN: Maximum recorded (greater than twenty percent missing record), 12.7 mg/L Jun. 7; minimum recorded, 2.4 mg/L, Nov. 30.

pH: Maximum, 8.0 units, Sep. 26; minimum, 6.7 units, several days in November and July.

SPECIFIC CONDUCTANCE: Maximum, 325 microsiemens, Sep. 3; minimum, 77 microsiemens, Feb. 3.

WATER TEMPERATURE: Maximum, 34.5 °C, Aug. 2; minimum, 4.5 °C, Jan. 6.

STATION NUMBER 02213700 OCMULGEE RIVER NEAR WARNER ROBINS, GA. STREAM SOURCE AGENCY USGS
 LATITUDE 324017 LONGITUDE 0833611 DRAINAGE AREA 2690.00 DATUM 250.00 STATE 13 COUNTY 021

SPECIFIC CONDUCTANCE (MICROSIEMENS/CM AT 25 DEG. C), WATER YEAR OCTOBER 1997 TO SEPTEMBER 1998

DAY	MAX	MIN	MAX	MIN	MAX	MIN	MAX	MIN	MAX	MIN	MAX	MIN
	OCTOBER		NOVEMBER		DECEMBER		JANUARY		FEBRUARY		MARCH	
1	100	98	89	85	89	84	65	63	79	77	69	67
2	109	99	90	84	89	84	74	64	79	76	70	67
3	115	109	84	70	91	88	72	66	78	74	74	70
4	118	110	81	73	96	91	74	69	74	50	76	73
5	149	118	87	81	96	93	76	72	52	47	77	74
6	167	149	91	87	93	90	76	74	52	49	76	62
7	173	152	95	91	91	90	79	75	50	50	63	57
8	177	167	99	95	92	90	84	62	51	50	57	51
9	172	153	102	96	---	---	62	56	54	51	51	43
10	174	151	101	93	---	---	65	57	56	54	43	37
11	167	139	101	97	---	---	69	65	59	56	40	38
12	159	146	106	101	---	---	72	69	62	59	44	40
13	169	151	111	105	---	---	75	72	62	60	47	44
14	171	153	106	83	---	---	77	74	65	61	52	47
15	168	154	83	66	---	---	78	75	67	64	53	51
16	166	155	78	69	94	87	75	65	70	67	54	52
17	169	148	88	78	92	88	65	61	70	56	59	54
18	167	140	92	88	95	92	67	65	56	51	59	57
19	166	143	97	91	102	94	70	67	57	51	63	58
20	158	143	101	95	102	94	72	70	60	57	65	63
21	162	144	104	100	102	97	71	70	63	60	67	65
22	174	145	106	98	113	100	73	71	64	61	68	65
23	152	141	99	94	104	92	75	73	65	62	70	67
24	152	140	96	87	92	73	75	71	64	60	77	70
25	146	139	88	85	73	58	73	71	61	59	82	77
26	142	126	87	85	66	56	75	72	65	61	82	78
27	126	82	89	86	---	---	76	73	69	64	88	82
28	102	89	91	88	---	---	73	66	70	68	87	83
29	89	79	94	91	58	55	68	65	---	---	85	77
30	80	77	94	89	61	57	74	68	---	---	85	83
31	85	79	---	---	64	60	77	74	---	---	85	82
MONTH	177	77	111	66	---	---	84	56	79	47	88	37

STATION NUMBER 02213700 OCMULGEE RIVER NEAR WARNER ROBINS, GA. STREAM SOURCE AGENCY USGS
 LATITUDE 324017 LONGITUDE 0833611 DRAINAGE AREA 2690.00 DATUM 250.00 STATE 13 COUNTY 021

SPECIFIC CONDUCTANCE (MICROSIEMENS/CM AT 25 DEG. C), WATER YEAR OCTOBER 1997 TO SEPTEMBER 1998

DAY	MAX	MIN	MAX	MIN	MAX	MIN	MAX	MIN	MAX	MIN	MAX	MIN
	APRIL		MAY		JUNE		JULY		AUGUST		SEPTEMBER	
1	88	83	87	79	98	90	128	114	136	127	145	112
2	89	86	79	67	95	86	133	122	142	127	145	124
3	88	80	69	65	101	94	139	129	144	133	148	125
4	81	73	72	65	104	100	141	131	152	137	134	85
5	77	71	71	65	113	104	143	123	148	137	91	81
6	73	71	69	65	116	101	140	117	168	140	110	85
7	72	69	75	68	107	96	133	114	196	161	115	99
8	69	68	76	71	99	95	133	114	186	155	131	115
9	71	68	78	72	111	97	133	119	184	153	135	127
10	72	67	79	73	125	109	132	122	170	153	144	132
11	73	68	83	78	126	110	134	122	155	143	151	137
12	73	70	83	80	116	104	130	118	153	141	149	140
13	72	71	85	81	117	101	128	98	156	130	152	139
14	72	67	81	79	117	102	123	94	155	133	149	138
15	71	60	82	80	121	107	141	119	159	132	162	144
16	60	58	89	82	128	106	141	128	132	116	178	158
17	65	60	91	87	130	111	150	129	122	117	178	138
18	69	65	97	88	126	113	134	129	129	122	170	146
19	68	65	89	80	118	106	142	133	128	123	165	147
20	69	67	98	84	120	105	154	129	124	117	163	145
21	69	66	105	91	106	96	154	125	120	89	171	155
22	70	68	100	89	101	97	154	138	103	89	173	132
23	73	70	104	89	113	98	144	134	103	100	132	111
24	75	73	110	93	122	104	156	134	102	99	132	111
25	75	72	98	87	122	108	146	136	103	98	144	118
26	75	73	97	85	123	107	160	146	125	103	158	135
27	76	74	105	87	132	111	160	146	123	108	176	158
28	76	74	109	94	132	120	156	134	137	110	171	157
29	76	71	101	96	147	129	155	131	134	119	166	158
30	80	74	106	94	143	128	131	121	141	121	164	122
31	---	---	106	98	---	---	133	122	143	122	---	---
MONTH	89	58	110	65	147	86	160	94	196	89	178	81

STATION NUMBER 02213700 OCMULGEE RIVER NEAR WARNER ROBINS, GA. STREAM SOURCE AGENCY USGS
 LATITUDE 324017 LONGITUDE 0833611 DRAINAGE AREA 2690.00 DATUM 250.00 STATE 13 COUNTY 021

SPECIFIC CONDUCTANCE (MICROSIEMENS/CM AT 25 DEG. C), WATER YEAR OCTOBER 1998 TO SEPTEMBER 1999

DAY	MAX	MIN	MAX	MIN	MAX	MIN	MAX	MIN	MAX	MIN	MAX	MIN
	OCTOBER		NOVEMBER		DECEMBER		JANUARY		FEBRUARY		MARCH	
1	126	119	201	164	158	146	138	116	124	97	---	---
2	120	114	195	176	---	---	158	138	97	78	---	---
3	141	120	199	180	---	---	150	127	86	77	---	---
4	141	132	192	180	---	---	128	121	---	---	---	---
5	180	137	198	186	---	---	127	119	---	---	---	---
6	170	150	205	181	---	---	129	122	---	---	---	---
7	174	142	188	176	---	---	155	129	---	---	---	---
8	175	130	183	172	---	---	153	140	---	---	141	119
9	131	124	178	171	---	---	147	138	---	---	148	126
10	148	130	182	166	---	---	145	136	---	---	148	122
11	145	129	175	166	---	---	152	143	---	---	148	118
12	139	123	171	150	---	---	152	138	---	---	120	113
13	135	125	161	145	---	---	144	135	---	---	126	115
14	157	127	151	139	---	---	155	133	---	---	142	115
15	178	144	140	134	---	---	145	130	---	---	115	87
16	178	151	141	114	---	---	144	141	---	---	98	88
17	178	160	122	105	155	141	143	139	---	---	100	97
18	184	162	141	101	175	153	143	137	---	---	106	99
19	193	158	---	---	177	153	150	137	---	---	119	103
20	190	154	---	---	165	151	143	138	---	---	123	103
21	195	170	---	---	165	153	147	133	---	---	128	117
22	188	173	---	---	172	160	170	130	---	---	137	119
23	181	143	---	---	163	152	170	140	---	---	137	117
24	185	154	---	---	161	142	160	114	---	---	133	119
25	203	185	---	---	153	136	114	104	---	---	144	121
26	198	188	166	146	147	130	117	106	---	---	138	116
27	199	174	167	154	131	127	120	117	---	---	120	103
28	187	174	176	152	143	129	129	120	---	---	116	109
29	193	164	159	144	151	136	145	124	---	---	118	112
30	213	171	181	144	151	120	143	125	---	---	132	117
31	201	170	---	---	120	108	132	120	---	---	150	128
MONTH	213	114	---	---	---	---	170	104	---	---	---	---

STATION NUMBER 02213700 OCMULGEE RIVER NEAR WARNER ROBINS, GA. STREAM SOURCE AGENCY USGS
 LATITUDE 324017 LONGITUDE 0833611 DRAINAGE AREA 2690.00 DATUM 250.00 STATE 13 COUNTY 021

SPECIFIC CONDUCTANCE (MICROSIEMENS/CM AT 25 DEG. C), WATER YEAR OCTOBER 1998 TO SEPTEMBER 1999

DAY	MAX	MIN	MAX	MIN	MAX	MIN	MAX	MIN	MAX	MIN	MAX	MIN
	APRIL		MAY		JUNE		JULY		AUGUST		SEPTEMBER	
1	145	130	158	132	183	167	122	110	186	158	266	238
2	130	111	152	128	185	175	134	115	195	176	268	242
3	117	110	166	140	186	177	133	129	199	176	325	263
4	122	115	166	140	196	172	136	131	211	167	315	241
5	124	115	162	144	181	170	140	135	214	166	293	233
6	140	117	164	152	180	163	157	140	209	194	325	293
7	134	115	164	133	169	158	168	156	198	186	308	286
8	145	118	137	118	183	165	159	144	---	---	293	245
9	147	124	122	117	183	160	168	149	---	---	298	243
10	139	125	122	118	181	163	166	151	---	---	303	281
11	146	126	127	121	185	169	165	145	---	---	282	254
12	145	124	145	125	189	159	170	153	---	---	292	248
13	142	123	141	134	163	134	165	105	---	---	296	266
14	157	135	143	137	144	135	126	107	---	---	277	260
15	162	125	151	133	158	135	114	105	---	---	266	217
16	160	140	152	133	158	130	131	111	208	199	285	214
17	161	126	147	127	161	138	138	123	210	197	288	247
18	141	117	146	131	155	134	133	117	232	196	299	269
19	140	114	138	121	153	136	133	123	222	206	292	228
20	161	136	154	134	155	126	154	133	228	176	299	253
21	162	136	160	144	168	153	161	126	218	185	271	224
22	160	144	155	131	168	156	165	154	204	185	245	225
23	160	127	147	131	167	158	169	150	203	190	272	242
24	141	128	155	140	193	166	159	134	197	170	272	223
25	143	129	157	144	184	167	165	146	208	183	253	215
26	149	142	161	141	186	154	169	156	222	208	265	229
27	169	148	165	122	165	152	174	161	241	220	250	223
28	174	150	165	139	159	135	175	147	245	226	248	202
29	166	139	176	149	142	115	174	149	231	213	218	193
30	158	144	171	138	119	114	174	156	235	212	234	190
31	---	---	176	165	---	---	183	142	246	201	---	---
MONTH	174	110	176	117	196	114	183	105	---	---	325	190