

SAVANNAH RIVER BASIN

02193500

LITTLE RIVER NEAR WASHINGTON, GA.

Latitude: 33° 36' 46" Longitude: 82° 44' 33" Hydrologic Unit Code: 03060105

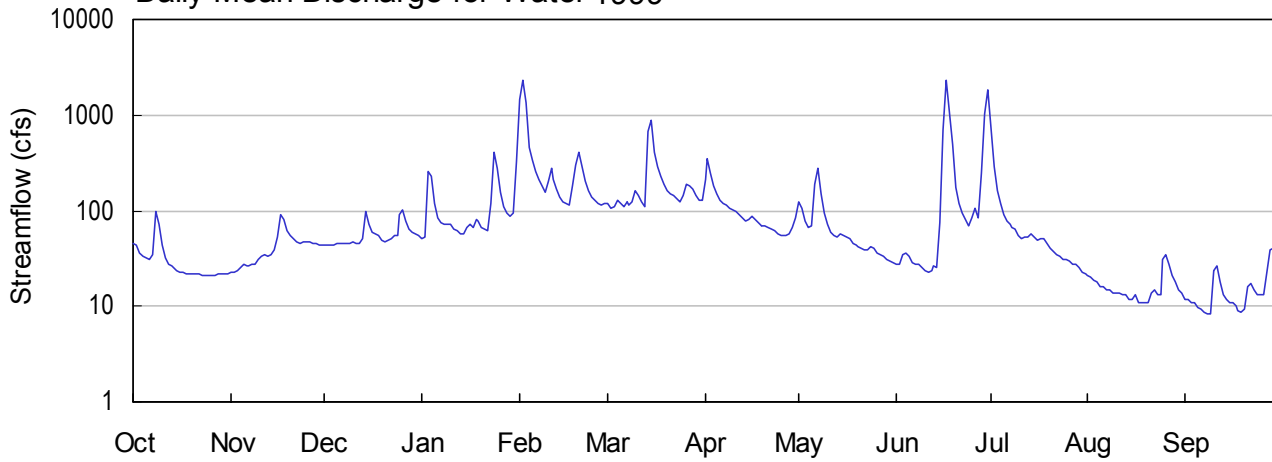
Wilkes County

Drainage Area: 291.00 mi²

Datum: 353.8 feet

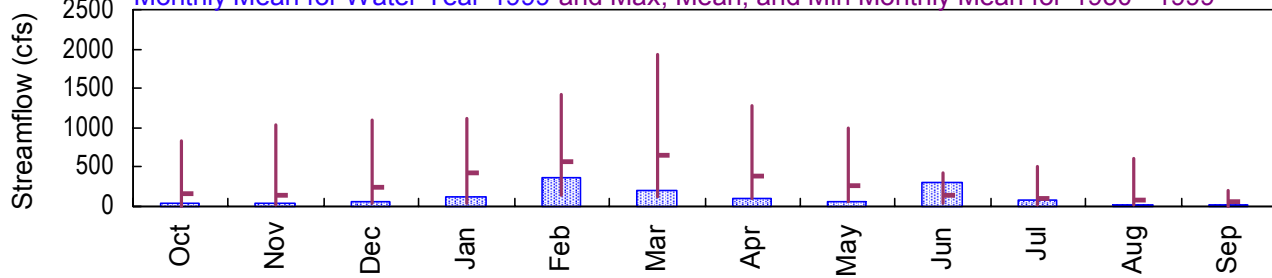
Period of Record: 1950 - 1999

Daily Mean Discharge for Water 1999

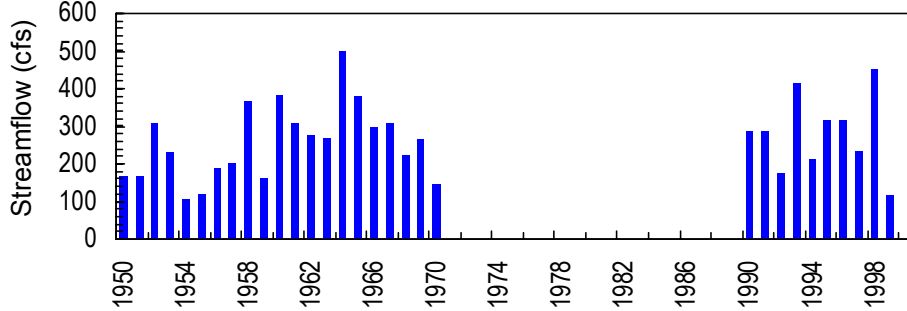


Monthly Statistics

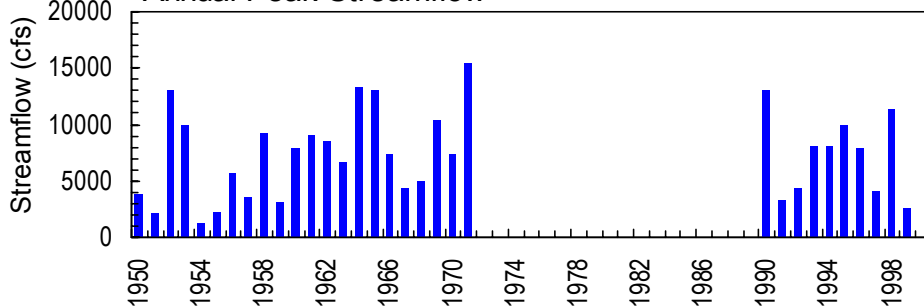
Monthly Mean for Water Year 1999 and Max, Mean, and Min Monthly Mean for 1950 - 1999



Annual Mean Streamflow



Annual Peak Streamflow



02193500 - Little River near Washington, GA

SAVANNAH RIVER BASIN

02193500 LITTLE RIVER NEAR WASHINGTON, GA.

LOCATION.--Lat 33°36'40", long 82°44'40", Wilkes-Taliaferro County line, Hydrologic Unit 03060105, on left bank on downstream side of county highway bridge pier, 700 feet downstream from Reedy Creek, 4 miles downstream from Georgia Railway bridge, 6 miles upstream from Williams Creek, and 9 miles south of Washington.

DRAINAGE AREA.--291 mi².

PERIOD OF RECORD.--October 1949 to September 1970, May 1989 to current year.

REVISED RECORDS.--WSP 1383: Drainage area.

GAGE.—Satellite transmitter. Datum of gage is 353.88 feet above sea level (leveling by global positioning system equipment). October 1, 1949 to June 23, 1971, recording gage at same site and approximately same datum.

REMARKS.--Records good.

PEAK DISCHARGES FOR CURRENT PERIOD.--Peak discharges greater than base discharge of 3,000 ft³/s and maximum (*):

DATE	TIME	DISCHARGE (ft ³ /s)	GAGE HEIGHT (ft)
Jun. 17	0530	2,590*	15.50*

No other peaks greater than base discharge

STATION NUMBER 02193500 LITTLE RIVER NEAR WASHINGTON, GA. STREAM SOURCE AGENCY USGS
 LATITUDE 333646 LONGITUDE 0824433 DRAINAGE AREA 291.00 DATUM 353.88 STATE 13 COUNTY 317

DISCHARGE, CUBIC FEET PER SECOND, WATER YEAR OCTOBER 1998 TO SEPTEMBER 1999
 DAILY MEAN VALUES

DAY	OCT	NOV	DEC	JAN	FEB	MAR	APR	MAY	JUN	JUL	AUG	SEP
1	46	23	44	51	1450	121	215	126	28	726	21	12
2	44	23	44	52	2300	108	354	108	28	285	20	12
3	36	24	44	258	1350	111	246	79	35	165	19	11
4	33	25	44	233	464	129	181	66	36	118	18	11
5	32	27	45	121	341	117	149	69	33	92	16	9.8
6	31	26	45	84	261	110	130	187	29	77	16	9.2
7	34	26	45	75	211	125	120	282	27	73	15	8.7
8	100	27	45	72	182	114	113	149	27	67	15	8.3
9	73	28	46	71	158	122	107	93	25	65	14	8.2
10	44	31	47	71	204	162	102	71	24	54	14	24
11	32	33	45	65	281	145	97	60	23	50	14	26
12	28	35	45	61	209	122	90	54	24	52	13	18
13	26	33	51	58	167	111	83	53	26	52	13	13
14	25	34	98	58	140	679	78	57	25	57	12	12
15	24	39	72	68	125	880	80	55	74	53	12	11
16	23	52	60	72	118	413	87	53	698	49	13	11
17	23	92	58	66	114	288	81	50	2290	50	11	10
18	22	82	54	81	183	226	74	45	1050	50	11	9.1
19	22	61	49	79	296	187	70	43	492	45	11	8.5
20	22	54	48	67	402	162	69	42	173	41	11	9.4
21	22	50	49	64	284	149	67	40	118	38	14	16
22	22	47	50	62	202	144	64	39	95	35	15	17
23	21	46	56	121	159	134	61	39	80	33	13	15
24	21	47	56	406	140	124	58	42	69	31	13	13
25	21	47	92	273	128	146	55	41	84	31	31	13
26	21	47	101	153	121	192	55	36	104	30	35	13
27	21	46	78	111	114	184	56	34	83	28	28	23
28	22	45	64	96	119	171	58	33	246	27	21	39
29	22	44	59	86	---	145	67	31	1010	25	18	40
30	22	44	57	94	---	130	83	30	1820	23	15	40
31	22	---	54	330	---	129	---	29	---	22	14	---

